

URBAN JUNGLE

ECOWEEK PRISHTINA 2014

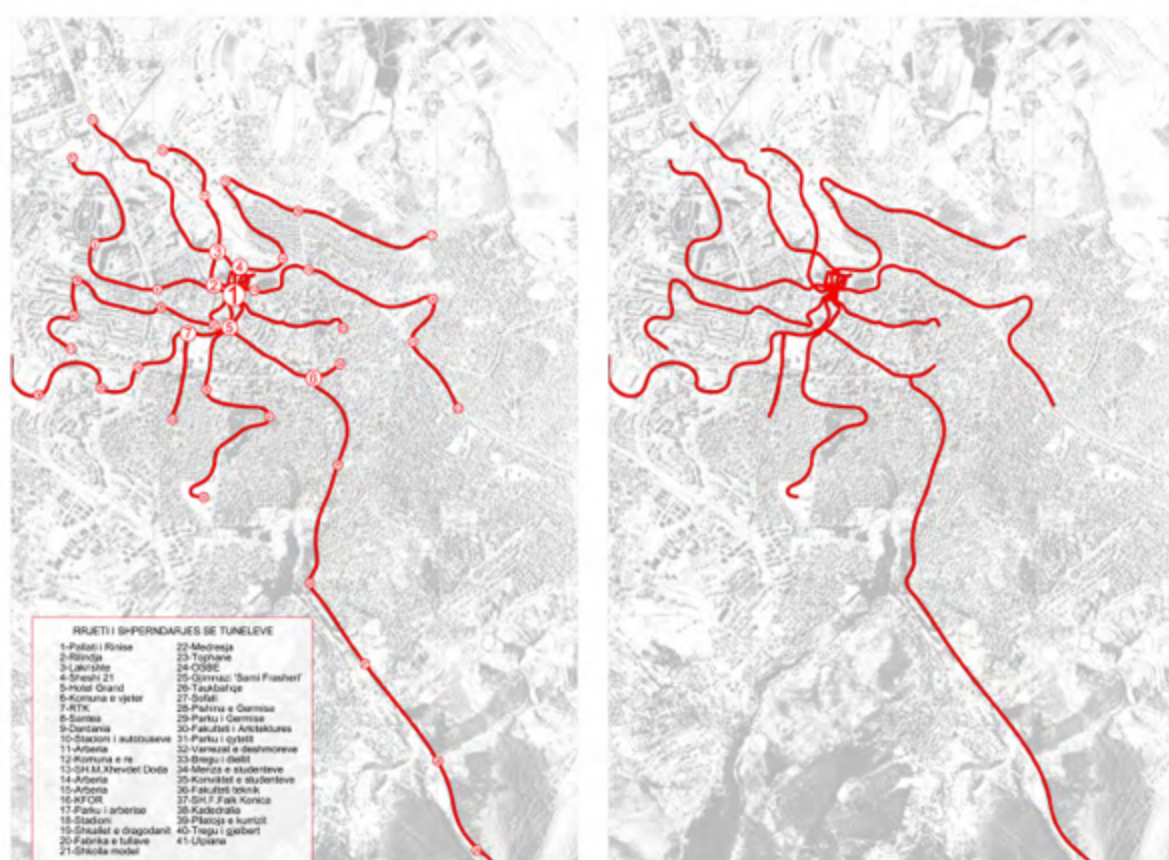
CONCEPT: Idea of creating concept is based in NATYRE, which is experienced as everlasting and which is in constant changing. Nature is submitted, it is rough like the truth. It is eternal metamorphosis. Aims permanence and changing. Idea is to create one world inside another one, AN URBAN JUNGLE. Nature is perpetual (let something that is everlasting). Urban jungle comes like a creation – link of man with its nature, with its beginning. It is ORGANIC, rough and powerful. It is ANTIQUE LABIRINTH in modern civilization.

ECOLOGY: Connection between organisms and their environment. Discussing the man, it strengthened in dimension of HUMAN ECOLOGY. It represents effects of MODERN CIVILIZATION in man. So ecology represents link between spatial environment and people.

FUNCTION: Structure is projected like UNIFORM space, which links different environments in the city. It integrates in ORGANIC NETWORK, an inorganic environment. Enables participation of everybody PEDESTRIANS and BICYCLIST. It is comprehensive, spontaneous, independent and UNIQUE. It guarantees MYSTERIES and surprise.

STURCTURE: Develops in organic way, constantly changing. Contains wood, which integrates with clambering plants. It has circular form, changes constantly in three dimensions. It has approximately 6m diameter. It will be realized with WOOD holders in longitudinal and transversal plan. It expands, narrows, extended and shrink.

URBAN JUNGLE is result of nature and impact of man in the same time.



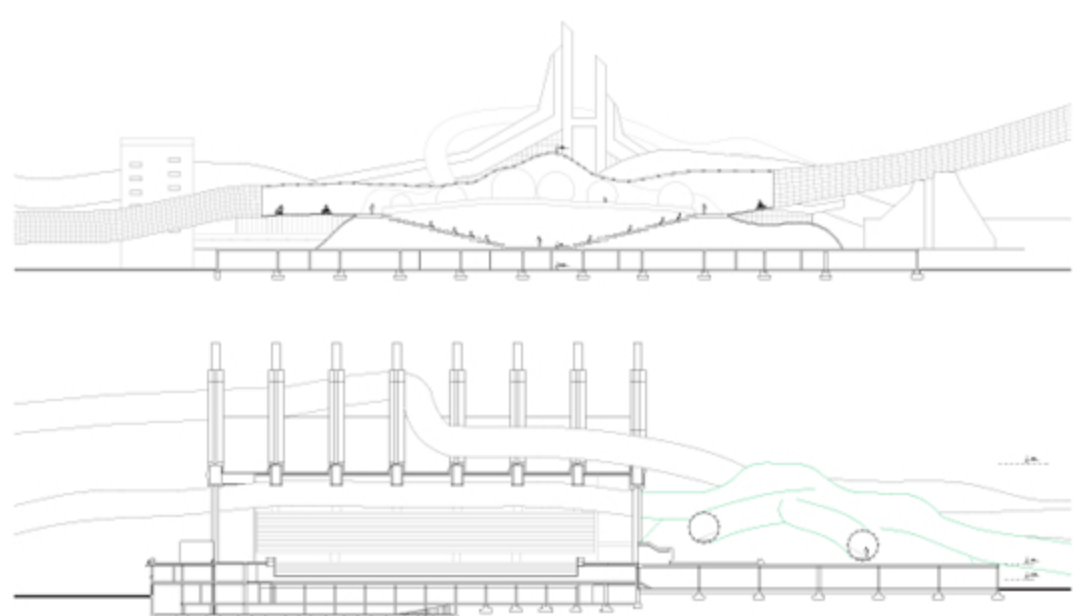
Situation



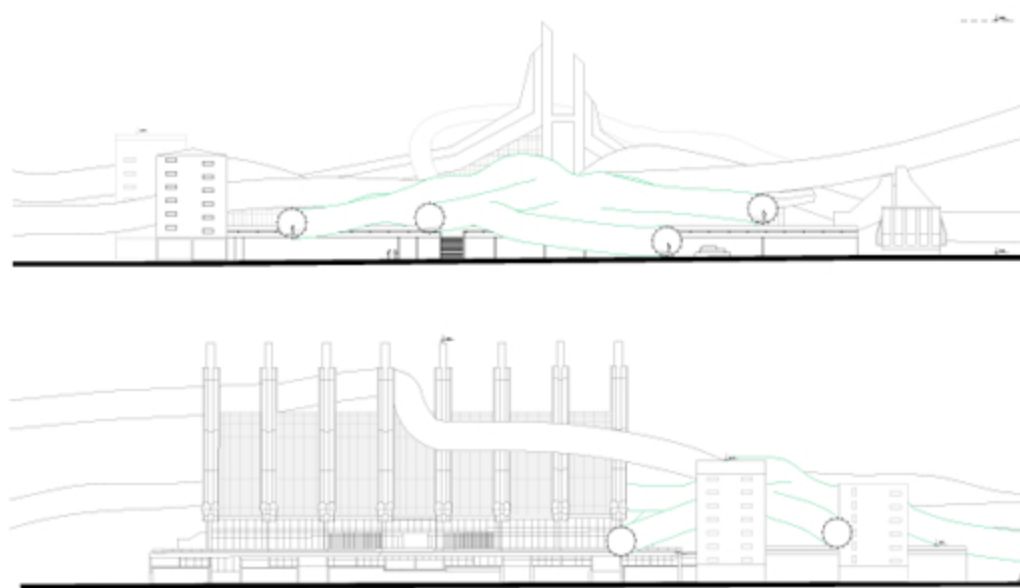
Site Plan



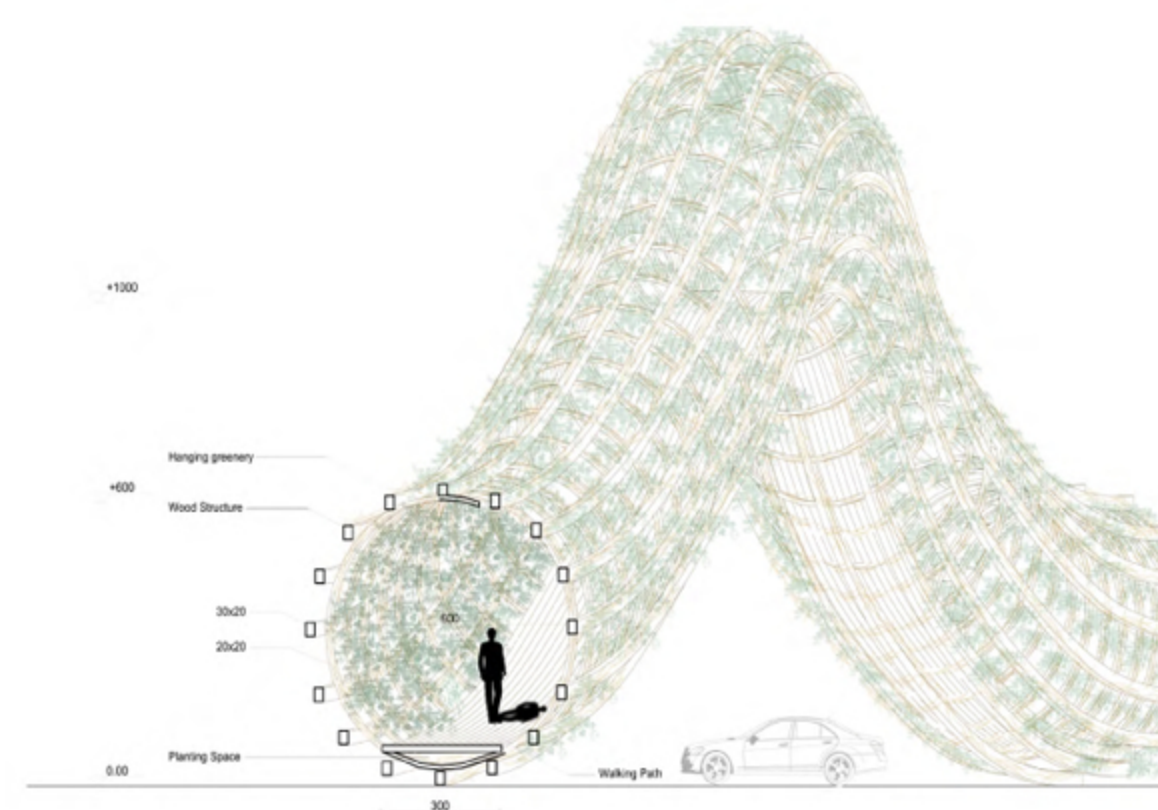
Ground Plan



Sections



Elevations



Detail

