

ביאנלה  
בת-ים

פעולה עירונית  
URBAN ACTION

BIENNALE

הביאנלה לאדריכלות הנוף בת-ים  
Bat Yam Landscape Architecture Biennale



**הזדמנות TIMING**



Timing 2010 Project Map



### **Timing 2010 Schedule**

April – Site Specific Workshop  
July – Ecoweek workshops  
Spet 25<sup>th</sup> – Biennale Launch  
2011 – Professional Talks

### **2010 Biennale Borders**

North – Yoseftal St  
East – Nisenboim St  
South – Kommemiyut St  
West - Sea

### **Projects General Layout**

40-odd project  
30 Architectural projects  
9 projects with community basis  
4 overseas teams

Timing 2010 Projects



## Business District



The Bat-Yam Business District is undergoing a shift from "industrial area" to multi-use neighborhood including business, residences and commerce and leisure.

The municipality and the Biennale are acting in the area with the aim of improving the physical space, preparing the zone for its future, and opening the temporary spaces formed during the transformation as rich sites for social activity.

The intervention in the area is based around cleaning and tidying actions, pinpoint development and projects led by planners selected for Timing 2010.



# Cleaning and Tidying

## Bat-Yam Municipality

Ha'Avoda St, Business District



Fence renovation - guidelines

1. Brick and concrete walls will be repaired and painted
  - In gray # S162 up to 150 meters
  - In white # 162F from 150 meters and up
  - cm black - Street name will be printed in 15 block letter at the 200 meter mark

2. All metal elements, including fences, banisters and poles, will be painted in RAL 7047





# Spot development

Moria-Sekely Landscape Architecture

Chile Blvd, Binyamini lot [Nissenboim/Yoseftal], Zorfim ring

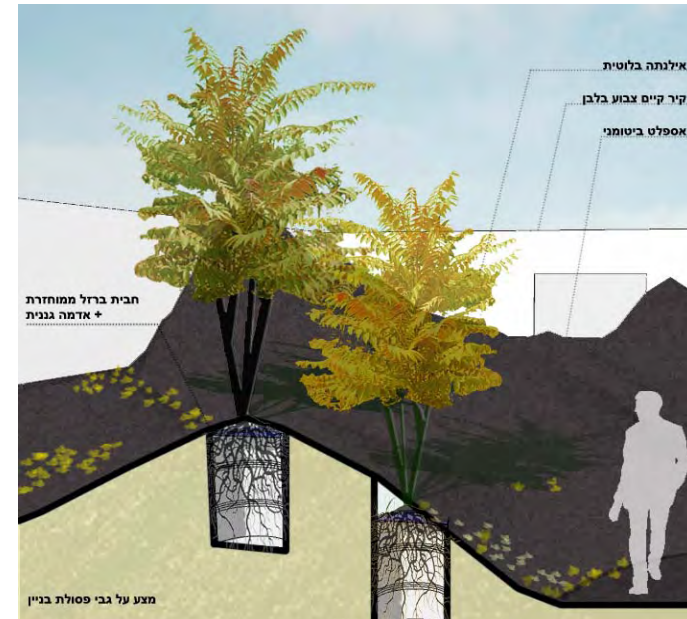






# Foreign Work

Amir Lotan  
HaMelacha Street





# On an Urban Scale

Havi Livne and Heli Elul

Solelim Street







מרכז המחקר והייעוץ  
בנייה  
מרכז המחקר והייעוץ  
בנייה  
URBAN ACTION BIENNALE  
בנייה

# Junktion

Gurit Magen  
Business District







# Observing Horizon

Raffaella Crispino and Benoit Burquel  
Binyamini Lot [Nissenboim/Yoseftal]



ב'אננה  
מנוחה  
BIENNALE  
URBAN ACTION  
BAT YAM

# Without a Fence

Idit Gazin and Michal Schreiber

10-12 Ort Israel Street



שטח 4-4 צילום אדריכלי



שטח 8-8 צילום אדריכלי



# Commercial Centers



Treatment of the commercial centers acts via three routes

**Business**, through mentoring and consultation

**Community**, by connecting to a communal entity and instigating activities such as fairs and workshops

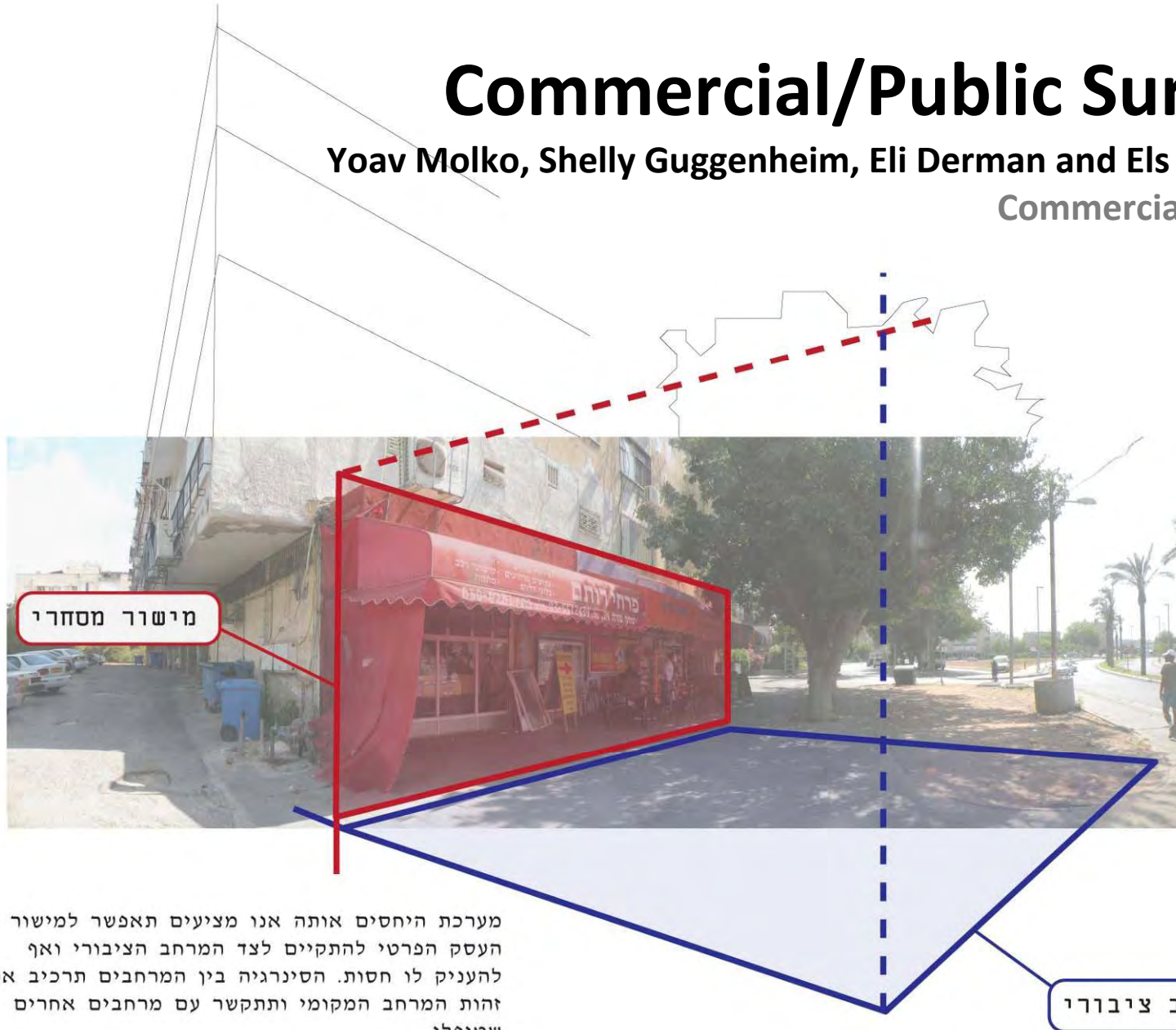
**Physical**, together with professional architects - renovating the shared and public spaces.



# Commercial/Public Surface

Yoav Molko, Shelly Guggenheim, Eli Derman and Els Verbakel

Commercial Centers



מישור מסחרי

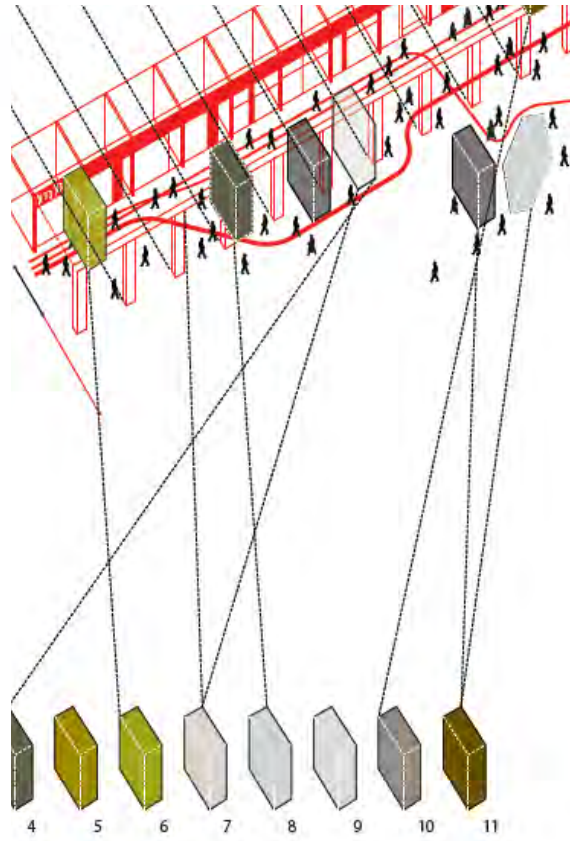
מערכת היחסים אותה אנו מציעים תאפשר למישור העסק הפרטי להתקיים לצד המרחב הציבורי ואף להעניק לו חסות. הסינרגיה בין המרחבים תרכיב את זהות המרחב המקומי ותתקשר עם מרחבים אחרים שטופלו

מרחב ציבורי



# Extra Retail Unit

Matilde Cassani and Francesco Librizzi  
Commercial Centers







# Community Stores

Bat-Yam Biennale  
Commercial Centers







## Construction Sites

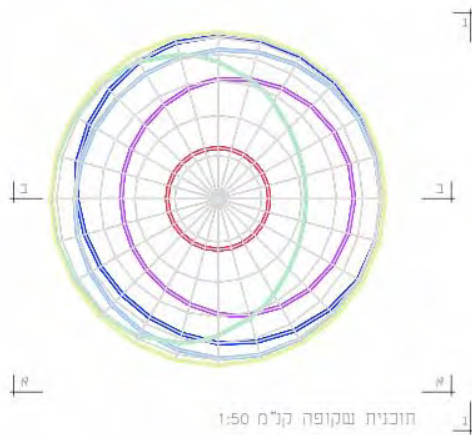
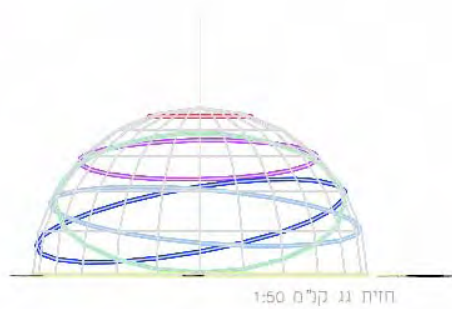


Transformation of construction sites from obstacle to public urban space.

בִּיאָנְנָלֵה  
בִּיאָנְנָלֵה  
סְמִינָרֵה עִירוֹנִית  
URBAN ACTION  
BIENNALE  
BAT YAM

# Skylight

Avi Levi, Yasha Goman, Iftach Friedman and Eyal Yona Segev  
Gan Ha'ir Park and Ben Gurion/Jabotinsky intersection







# Shutter Fence

Roe Talmon and Noa Biran  
Gan Ha-ir Park; Ashdar Park



# Working Man

Maya Barkai  
Gan Ha'ir Park







# Vertigo

Yanai Toister  
Ha'amal Street



# Landscape

Yochai Matos  
Sun Hotel



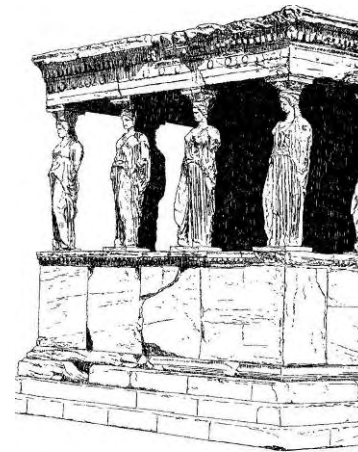
# Lace Fence

Shiri Cnaani  
Business District

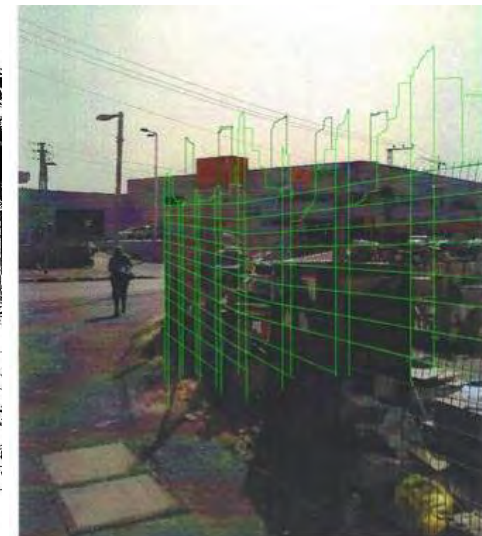


# The Stuff Dreams are Made of

Natalie Mendel  
Ha'avoda St



1.1 סמסות חיקויאסטרודות, סקדוש איבטאון, אקדומוליס אשונה לכור. ר' ריבין







# Pit Project

Sharon Danzig and Cecilia Vitas  
South of Colony Hotel





## New Infrastructures



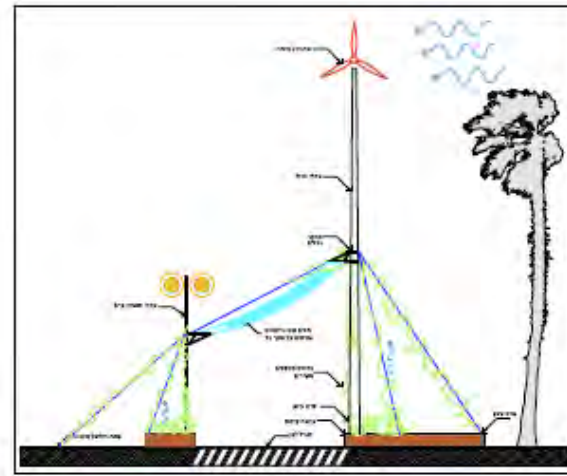
Creation of a new urban landscape composed of alternative energy systems.



# Seaside Green Infrastructure

Tanya Zach and Uri Reicher

South Boardwalk



2. חתך, קני"מ 1:50



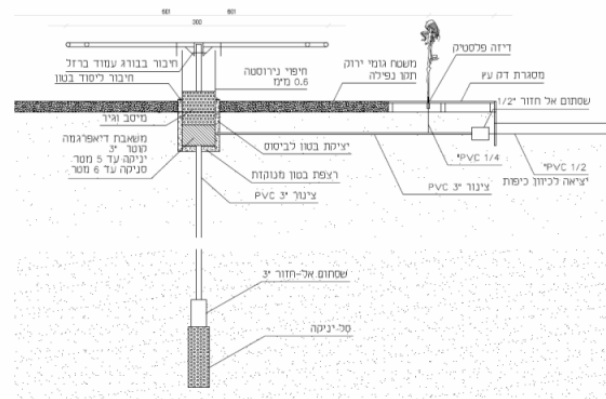
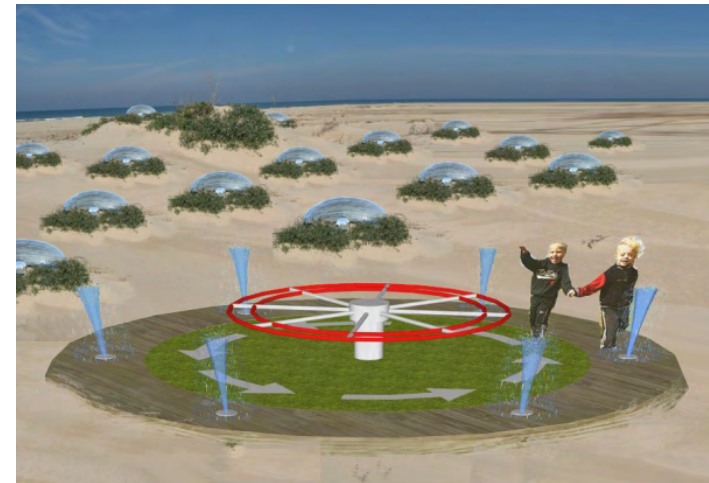
1. תוכנית סביבה, קני"מ 1:1000





# Tamaguchi Park

Eifo Dana Group  
South Beach







# Initiating urban and social change

Timing 2010 supports projects that progress along short- and long-term cooperative processes with both residents and infrastructures. One of the goals of these projects is to lend the residents of Bat-Yam the knowledge and ability necessary for self-led improvement and maintenance processes.



# The Great Butterfly Experiment

Bat-Yam Municipality and Bat-Yam  
throughout the city

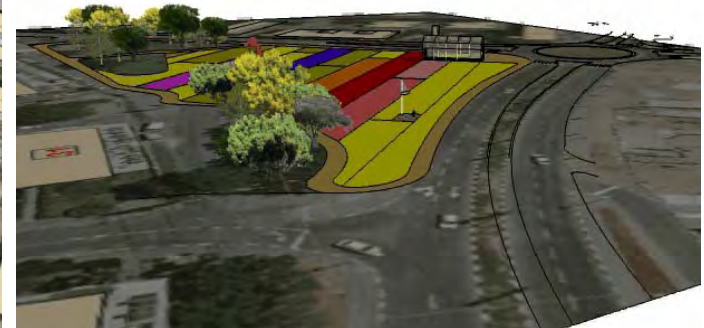
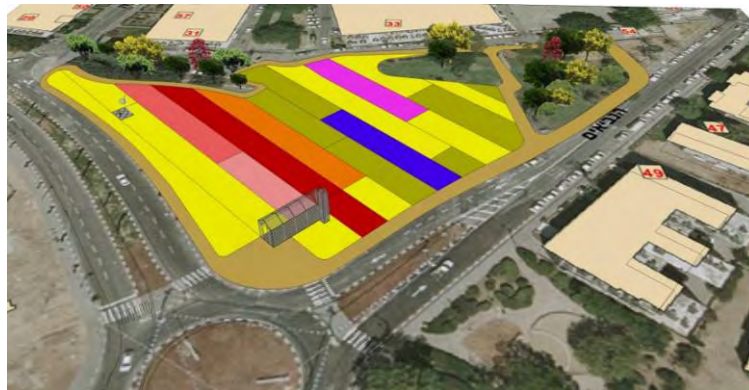






# Butterfly Pavillion

Weinstein-Vaadia Architects and Moria-Sekely Landscape Architects  
Yonatan Square







# Streeeeet

Guy Konigstein and Vincent Wittenberg  
Yoseftal / Balfur





# Barbie

Asafsuf Group  
Abarbanel Psychiatric Hospital







# Public Participation Workshops

Urbanica Group  
Amidar Neighborhood





# Residents Plan Themselves

Geography Sept, Tel Aviv University  
Meonot Yam Neighborhood

