

The background of the entire image is a close-up photograph of numerous green sprouts, likely mung bean sprouts, growing upwards. Each sprout has a long, thin, light green stem and a pair of bright green, rounded leaves. At the top of each stem is a brown, oval-shaped seed pod, some of which are slightly open, revealing the inner seed. The sprouts are densely packed together, creating a vibrant green texture.

The Agricultural Farm of Bat-Yam

SEEDS INTO THE CITY

Ecoweek Israel July 2010
Bat-Yam Biennale



Workshop student participants:

Avital Lowe, Gilon Mor, May Gohtel, Ginat Girshengom, Hila Bar Mashiah, Orit Vahaba

Workshop leaders:

Revital Shoshani and Galia Hanoach-Roe – Landscape Architects

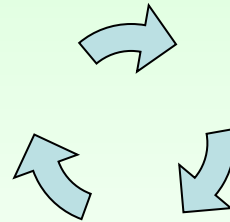


The agricultural farm of Bat-Yam was founded 25 years ago as an agricultural educational center for various populations of Bat-Yam residents. The farm is supported by the ministry of education and employs a few teachers and staff. In recent years the farm has taken upon itself to also educate the public on sustainability issues.

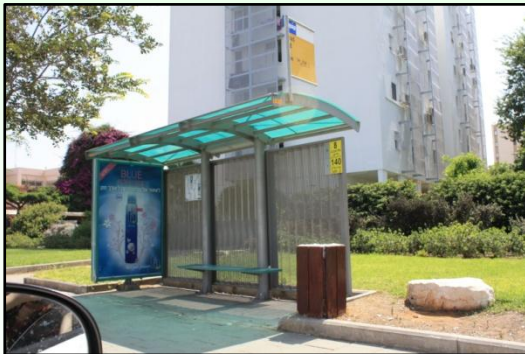
The farm is located on the outskirts of the city, physically as well as in terms of exposure. The general public is not aware of the existence of the farm, its activities and its importance. It offers classes and workshops within its grounds and has limited activity within the city itself.



Our vision - to establish a dialogue between the farm and the city in diverse facets.



We focused on the urban spatial aspect by drawing attention to the location of the farm, while providing a glimpse into its contents and activity. We chose to mark, both visually and sensually, the major public transportation axis leading to the farm in the vicinity of the Biennale zone, by marking selected bus stops on the axis as well as major pedestrian passages.

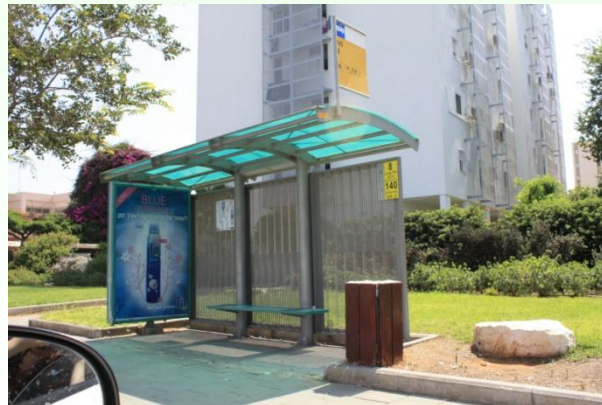


Map showing the location of the farm and major public Transportation axis leading to it in the vicinity of the Biennale zone

GREEN STATIONS

The physical design we propose serves to enhance two types of bus stations along the axis: post stations and hut stations. In each one, the contents of display will present either activity of planting or recycling done at the farm.

In the post station the post will serve as the construction to both recycling and plant display.

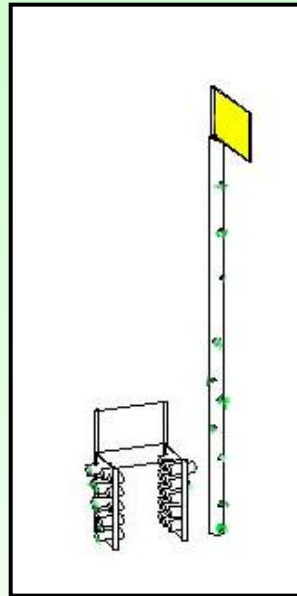


THE GREEN HUT



The green hut will use the existing construction as well as the design of punctured aluminum screens. The existing circle design will be expanded to serve as a container for round shaped degradable plant containers to be distributed to the public during the Biennale and after. As in the post stations, the display of plants will demonstrate various planting uses

THE GREEN POST

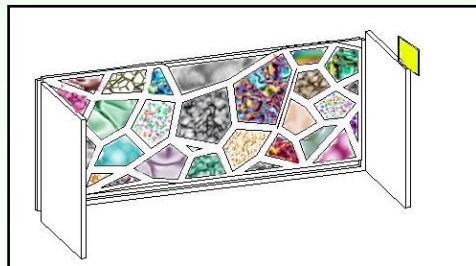


The "green post" will demonstrate the possibility of turning a banal street element into a green flowering display.



Near the post a "green chair", designed as a plant tray, will be situated, and will offer free gifts of degradable containers with plants

The "recycling hut station" will use the existing construction of the hut, and replace the back screen with a polygon cell wall which displays reusable and recyclable materials in an appealing visual design. After the Biennale, this wall can be used as a storage solution for recyclable art material in educational institutions around the city.



THE RECYCLING HUT



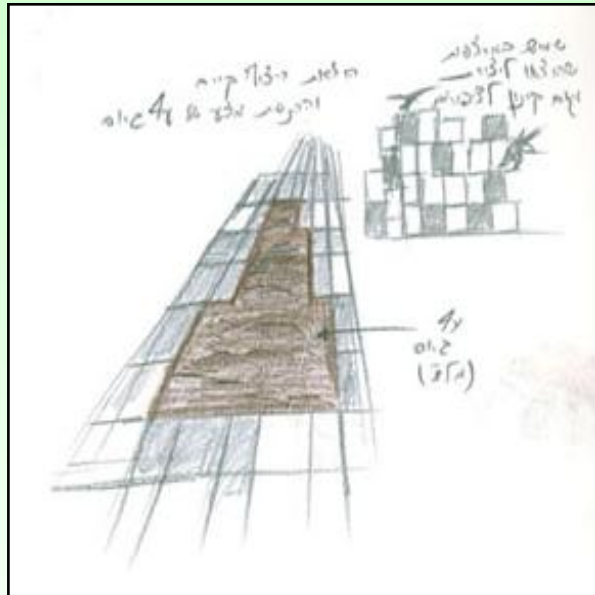
THE RECYCLING POST

The recycling post will be a pillar on which transparent beads will be layered serving as recycling material containers



THE GREEN CORRIDORS

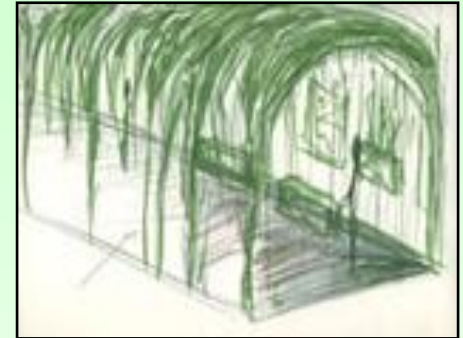
Sketches



Dismanteling of existing pavement bricks
for displaying mulch carpet
Reuse of bricks to create nesting
habitats

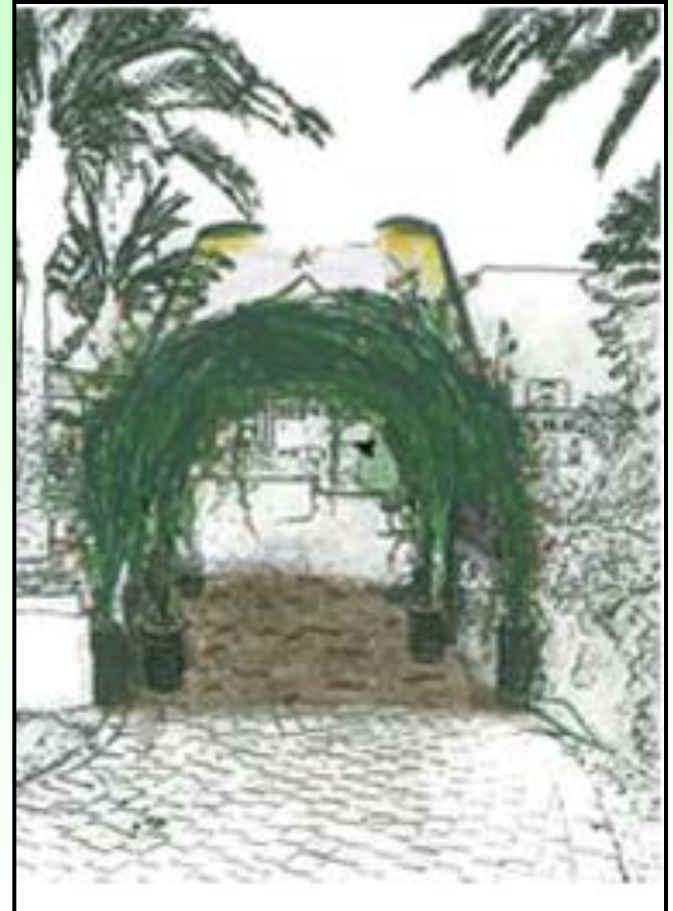


Examining possibility of locations within
the urban fabric



Creating the green
corridor with mature
modular elements grown in
the farm

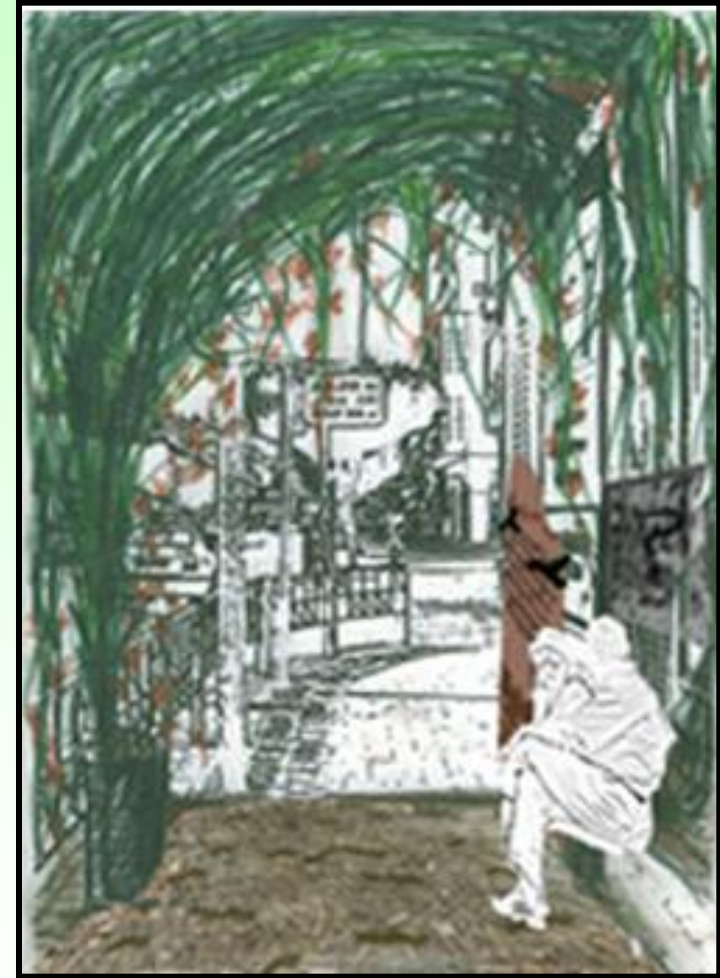
Free standing corridor



The corridor will stimulate sensual experiences involving smell (flowers) touch (textures), taste (edible plants) and sound (of nature). They will also demonstrate sustainable issues and solutions which relate to the farm

Construction site corridor

The corridor will be constructed taking advantage of existing infrastructure at construction sites. The corridor will include a modular construction and climbing plant cover which will be grown to mature size at the farm, thus enabling an immediate real refuge experience from the urban surroundings. The construction will be made of reused irrigation pipes and containers with soil. Mulch carpet brought from the farm will replace the existing urban paving, enabling a sensual experience.





We propose that all stations and corridors will be maintained during the Biennale by farm volunteers or special population groups working currently at the farm, such as people with autism or mental health patients from Abarbanel hospital in Bat-Yam.

SUSTAINABLE GIFTS FROM THE FARM

elements produced in the farm are distributed as "SEEDS" to bring the farm into the individuals' home.

Mulch handbag



The Mulch Handbags are produced from reused shirts, which are made with zero budget or zero professional work. The handbag will contain mulch from the farm which can be used at home gardens or containers and provides excellent groundcover

Plant capsule



The Plant Capsule is a degradable container, made of cardboard pipes filled with composted mulch and small plants or wild flowers seeds.

THE FARM LOGO

A marking object of the farm entailing values of nature simplicity and minimalism



The logo will be stamped on all distributed products of the farm

Ecoweek Israel 2010

GREEN ARCHITECTURE :: COMMUNITY :: SUSTAINABILITY International Conference and Interdisciplinary Workshops for Young Architects, Designers and Planners

ECOWEEK ... habits change ... climate change

ECOWEEK 2010 brings together young professionals and graduate students to learn from and cooperate with expert professionals through **planning "green" projects for communities**. The workshops bring together known and established architects, designers, and engineers from Israel, Palestine, Greece, Italy, and other European countries, and the US, with participating young architects and students of Architecture from Israel, Palestine, Greece, Italy, and other European countries. They work in small groups of up to 10 people and learn together how to design by integrating sustainability principles, 'green' Architecture and ecological solutions in their Architecture and design decisions. They also have the rare opportunity of working with **real clients for real projects** some of which will be built.

ECOWEEK is an independent non-governmental organization (NGO) with international activity. Its mission is to raise environmental awareness and to promote the principles of Integrated Development Worth-Living (Sustainable Development). Among ECOWEEK activities is the sharing of knowledge and expertise through the training of young professionals in 'green' Architecture and design, community responsibility and sustainability.

THANK YOU

