

ECOWEEK 2016

... habits change ... climate change



Workshop W2

The Porkupines' Shelter & Visitors' Center
at the Rose Garden, Jerusalem

The Wohl Rose Garden

- Wohl Rose Park is a public garden in Givat Ram, Jerusalem, located opposite the Knesset and government precinct, at the foot of the Israeli Supreme Court.
- The park was established in 1981. Over 400 varieties of roses are grown there, many of them gifts from countries around the world. The Wohl Rose Park covers 72 donam. It is one of the few rose parks of its kind in the Middle East.



The Porcupine

- Active at night.
- Life on the ground.
- Eat roots, vegetables, fruits and seeds.
- Searching for water sources.
- A project of environmental character, addressing the ecosystem of porcupines. The porcupines are an important contributor for trees and plants in general, and for the Rose Garden in particular.





Porcupines in the Rose Garden

- To understand how porcupines function in nature, imagine a catalysator that helps trees to multiply in the nature by carrying the trees seed to further places.
- In the case of the rose garden ecosystem porcupines not just multiply trees they also destroy parts of the garden by digging in the rose beds, eat the roots of the roses and flowers, and open holes in the water conduits.

Specifications

1. Create a new habitat for the rose garden porcupines. This place should be:
 - a) A place for day use (caves and tunnels).
 - b) The place to be partly visible for visitors.
 - c) Lighting solutions that will not disturb the animals living underground.
2. Create a border to protect a habitat that is attractive for porcupines so that they won't leave the area.

Explanations for Specifications

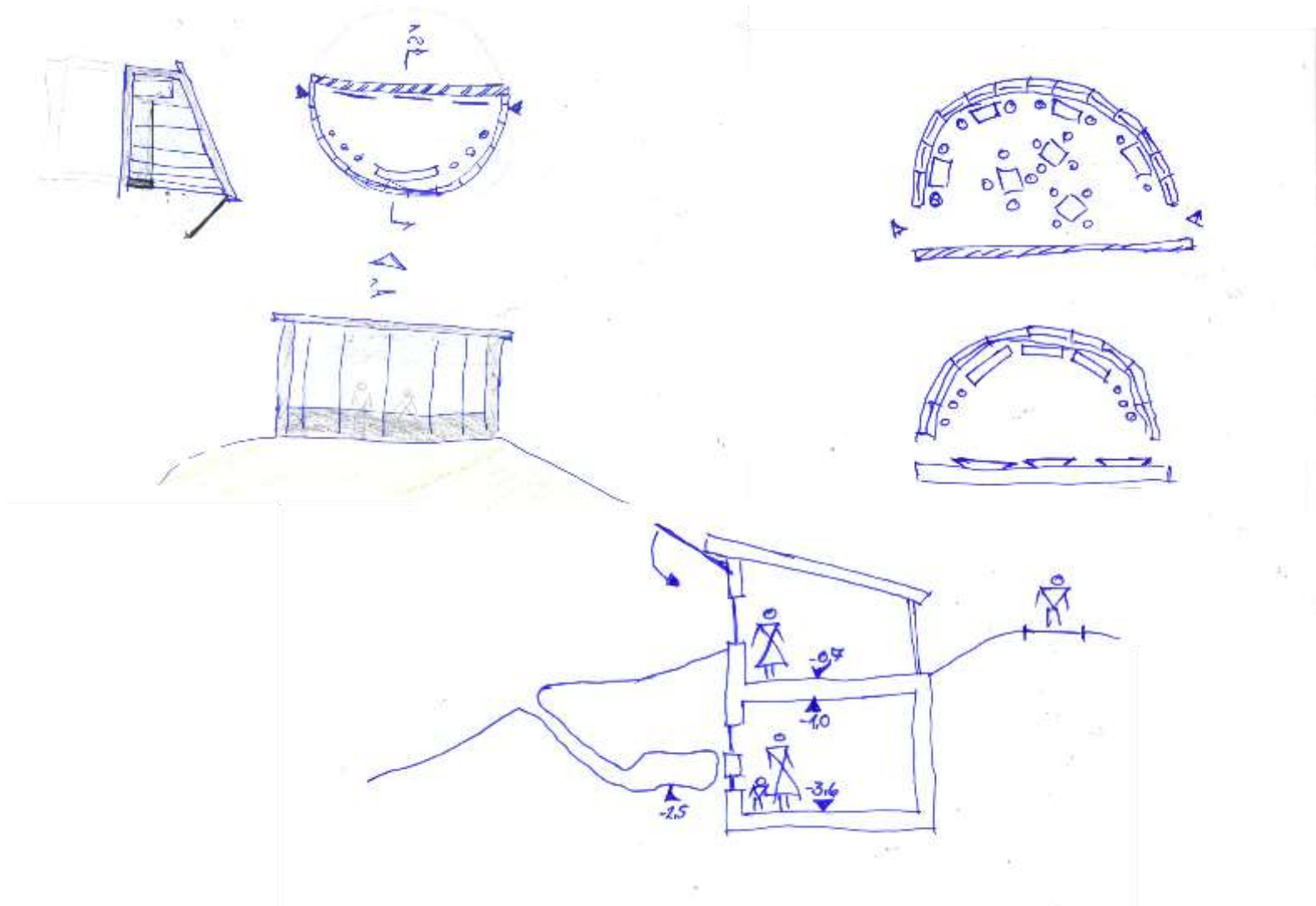
1. The porcupines are destroying parts of the garden. They eat the roots of the roses and flowers. Also they bite holes in the water conduits.
2. Porcupines used to live all over the park. In the future they will be limited to one area to control the damage in the garden. There should not be a fence.

„Status Quo“

- Project Area of 1600 m².
- Site to design a new landscape for the porcupines.
- Porcupines destroy the water pipes, eat the roots of the roses and dig holes in the garden.
- Observatory for use at night.
- Tunnel observatory for use at day.

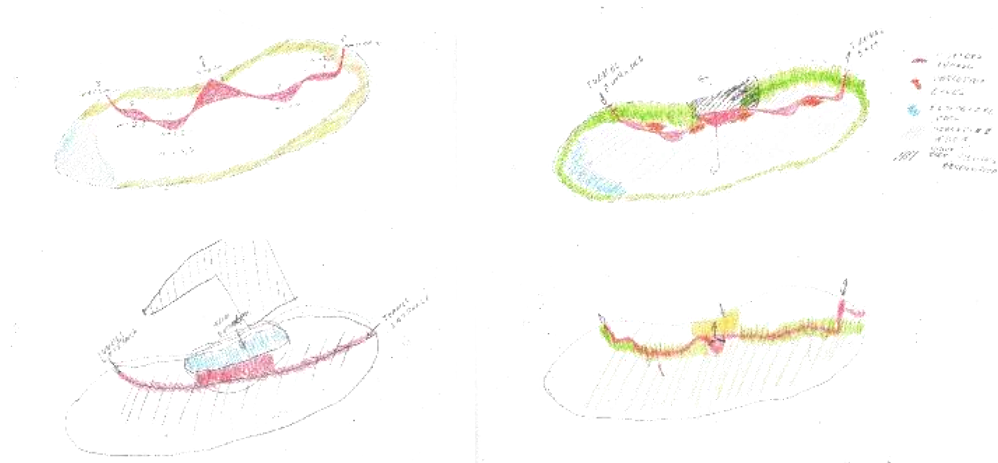


Sketches



Basic Principals

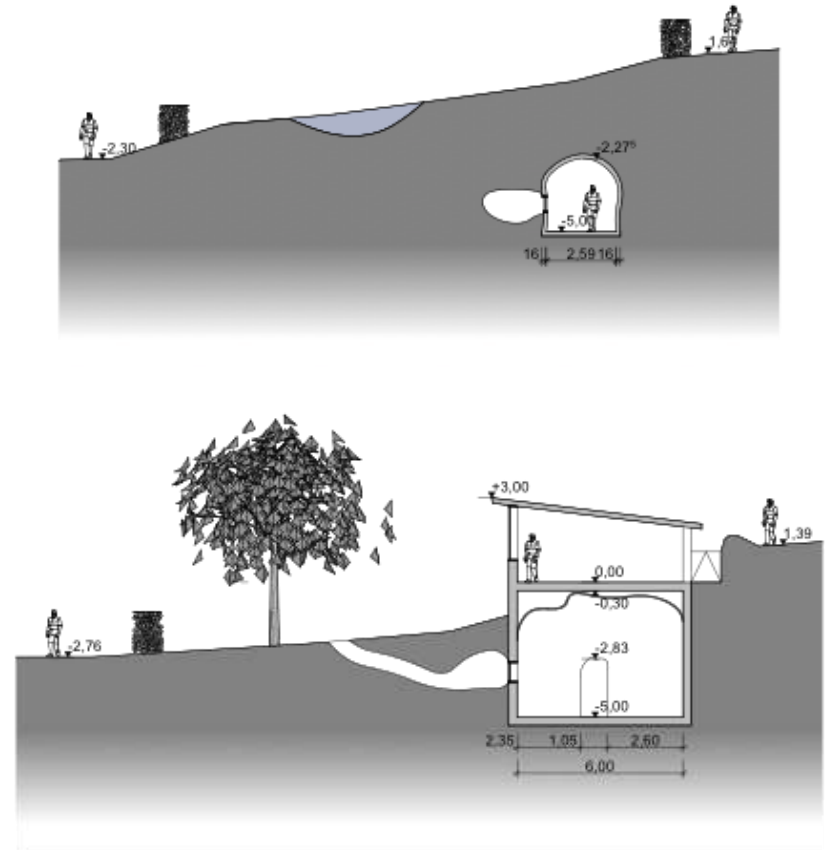
- Number of visitor at once: Up to 30
- One entry for visitors & One exit for visitors
 - Avoid sunlight in the tunnel.
 - Control the size of groups.
 - One way to avoid people congesting in tunnel.
- Enable cleaning for windows and caves.
- Water pool for porcupines.
- Enough area for porcupines to find food naturally.



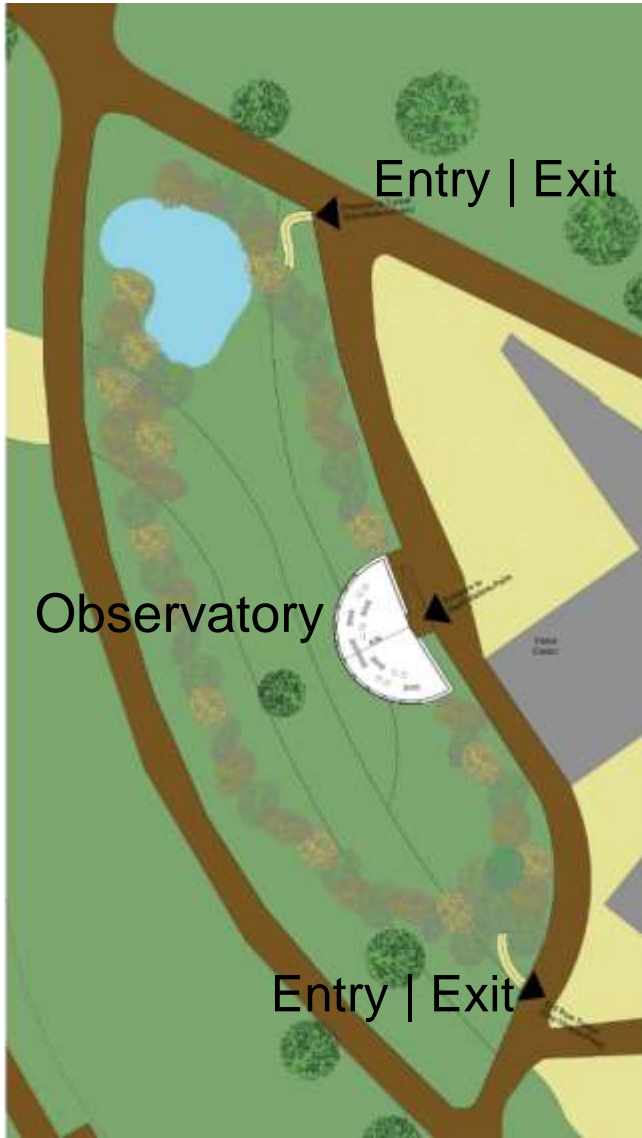
Porcupine-Observatory Plans



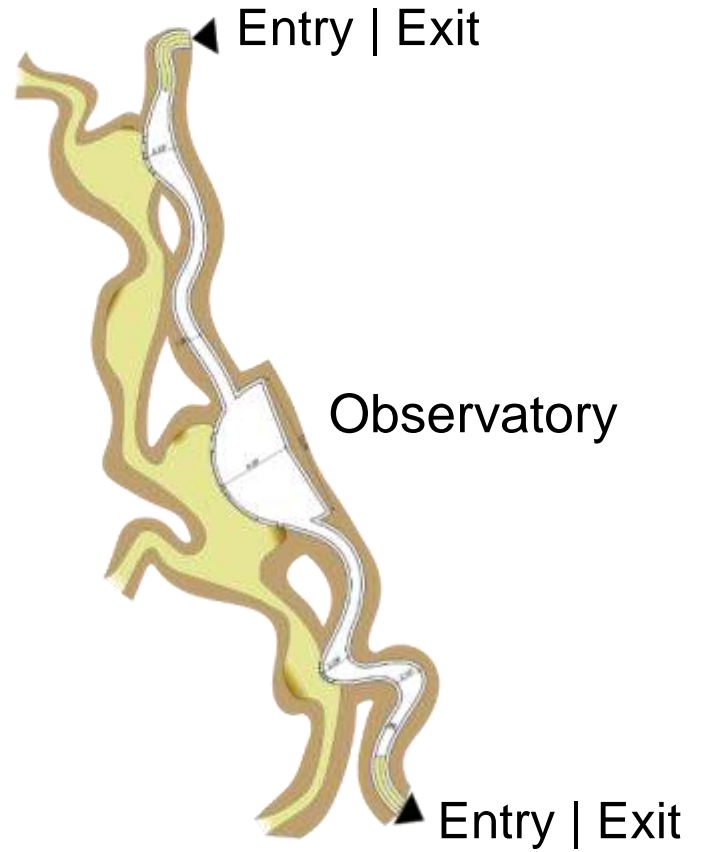
Site Plan



Sections



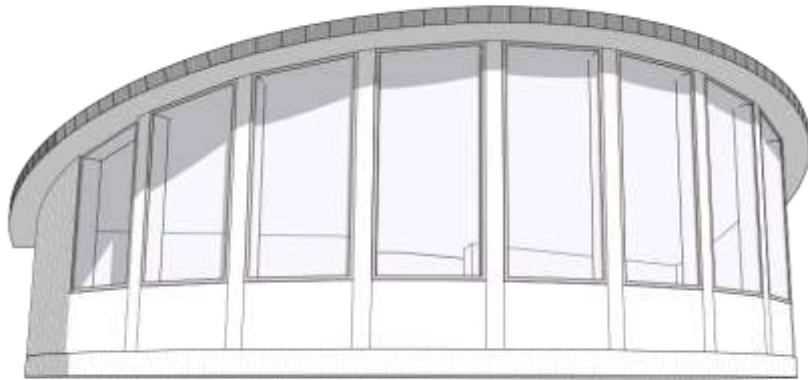
Floor Plan : Ground Floor



Floor Plan : Basement

ECOWEEK 2016

... habits change ... climate change



Thank you!