

A group of people is silhouetted against a bright sunset sky. The sun is low on the horizon, creating a strong glow and lens flare. The people are standing on a dark, flat surface, possibly a beach or a field. The overall mood is peaceful and scenic.

Eco-Tel Michal

תל מיכל - אקו

Coastal nature escape

לברוח אל הטבע

Grow the Park

Develop the City





What if?

What if the park and the ecological center build each other ?



Awareness

Let People Know What's Here



Siting

Site the Eco center where people are

A landscape photograph showing a dirt path winding through a field of green and brown vegetation. In the background, there are hills and buildings, including a prominent multi-story building on the right. The sky is clear and blue.

Evolve

Change with the environment

Herzelia - Tel Michal - City
nature side

Tel Michal – Past – Bronze Age

1500–1800 BC

– First Settlers

– Layers of red clay
and Sand

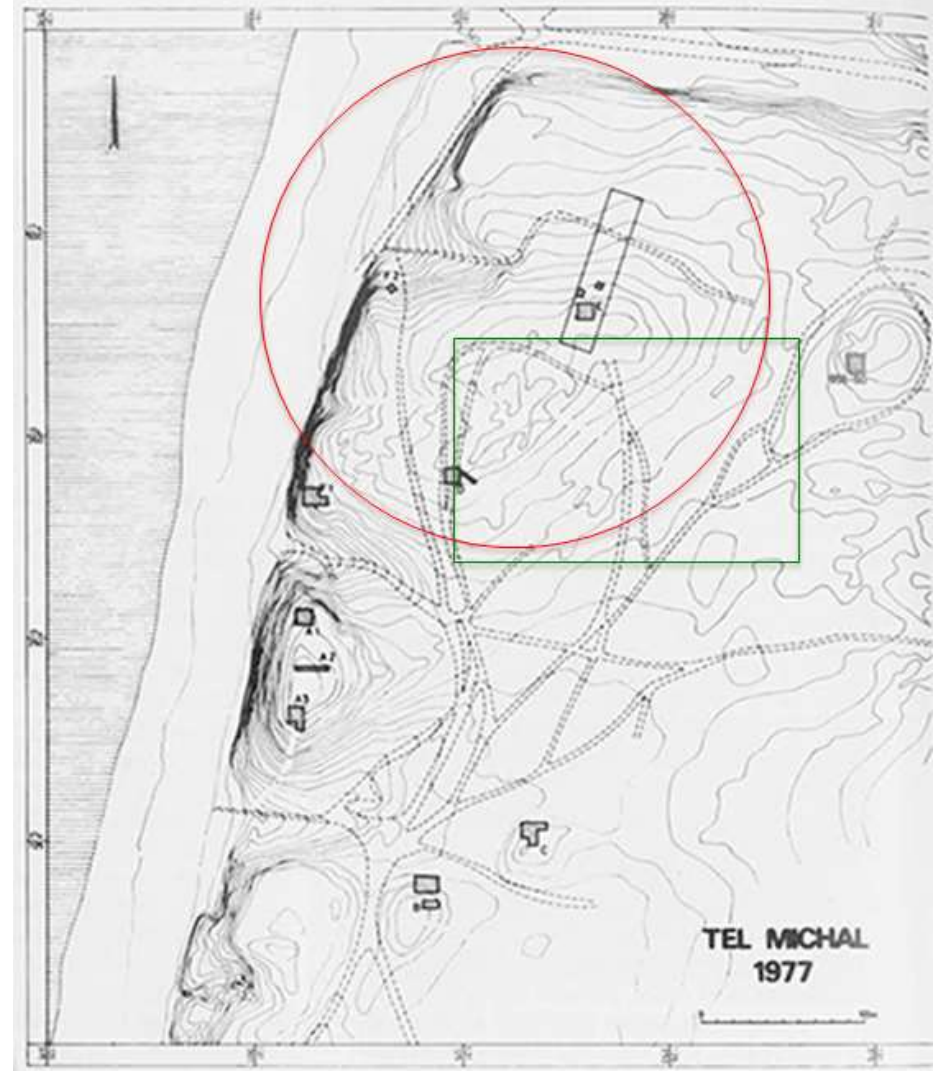
– 4m high Platform

– Expanded to

10m high

30 wide

– trade market



Tel Michal – Past

– Iron Age

1500–1800 BC

– First Settlers

– Layers of red clay
and Sand

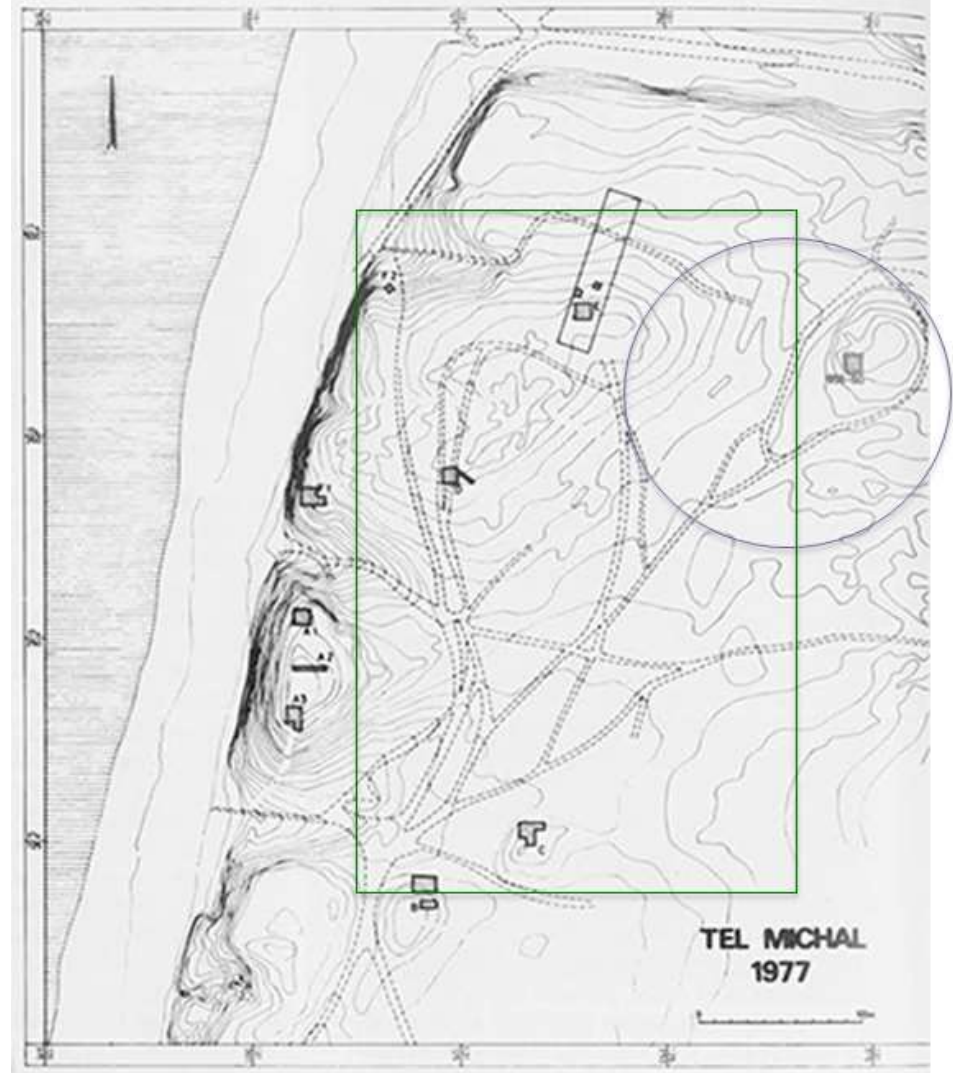
– 4m high Platform

– Expanded to

10m high

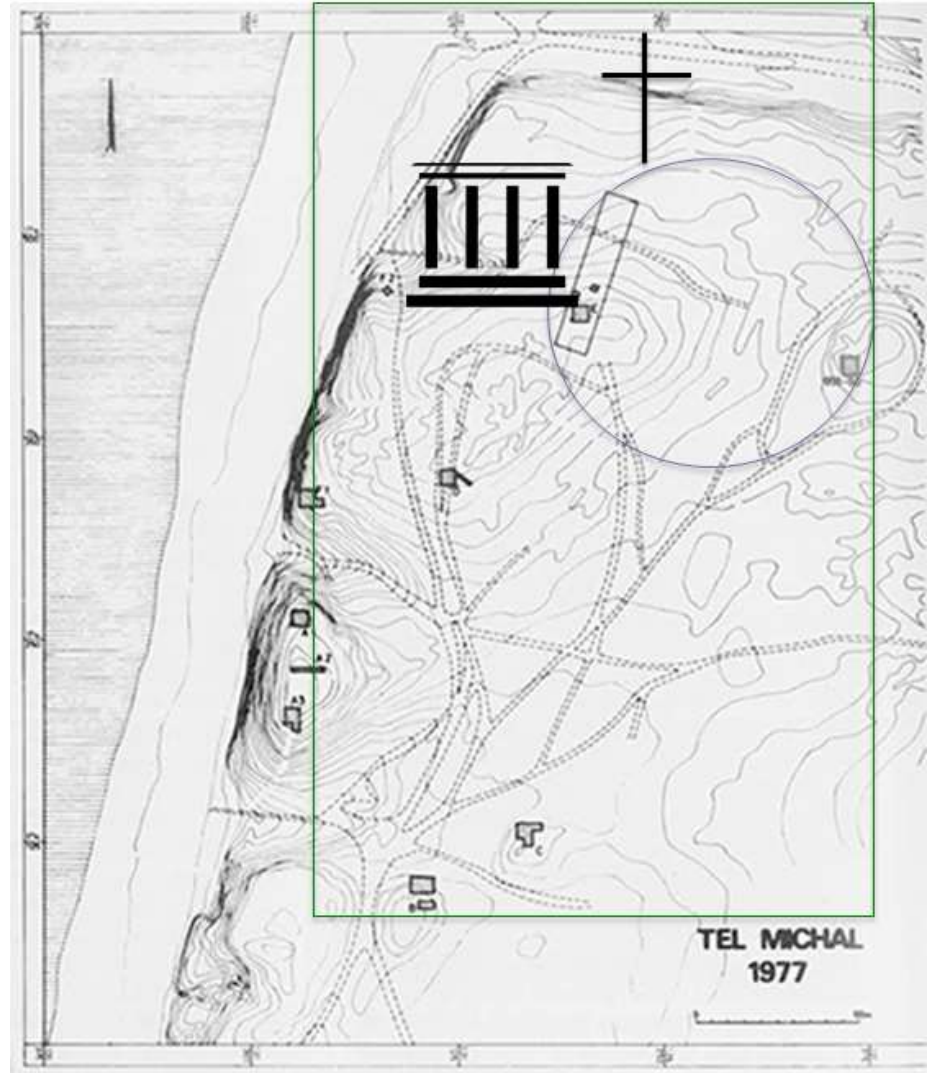
30 wide

– trade market

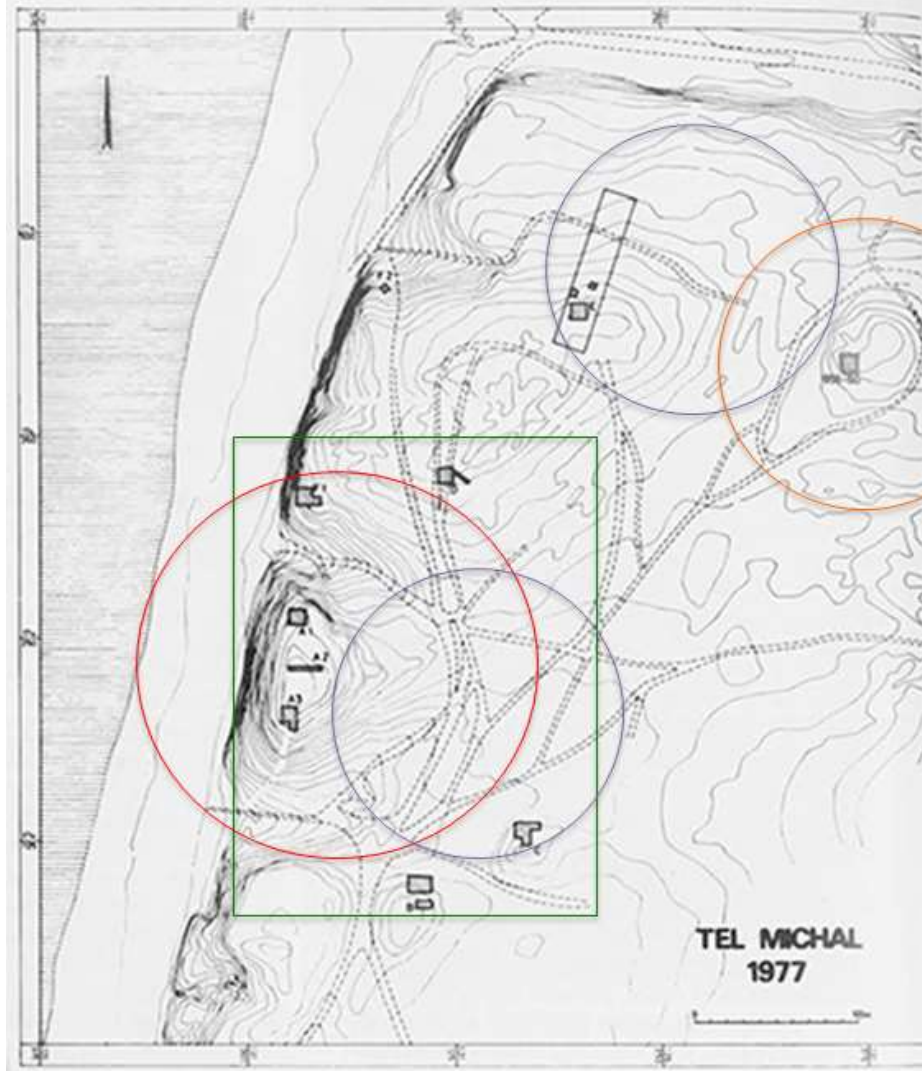


Tel Michal – Past – Persian Period

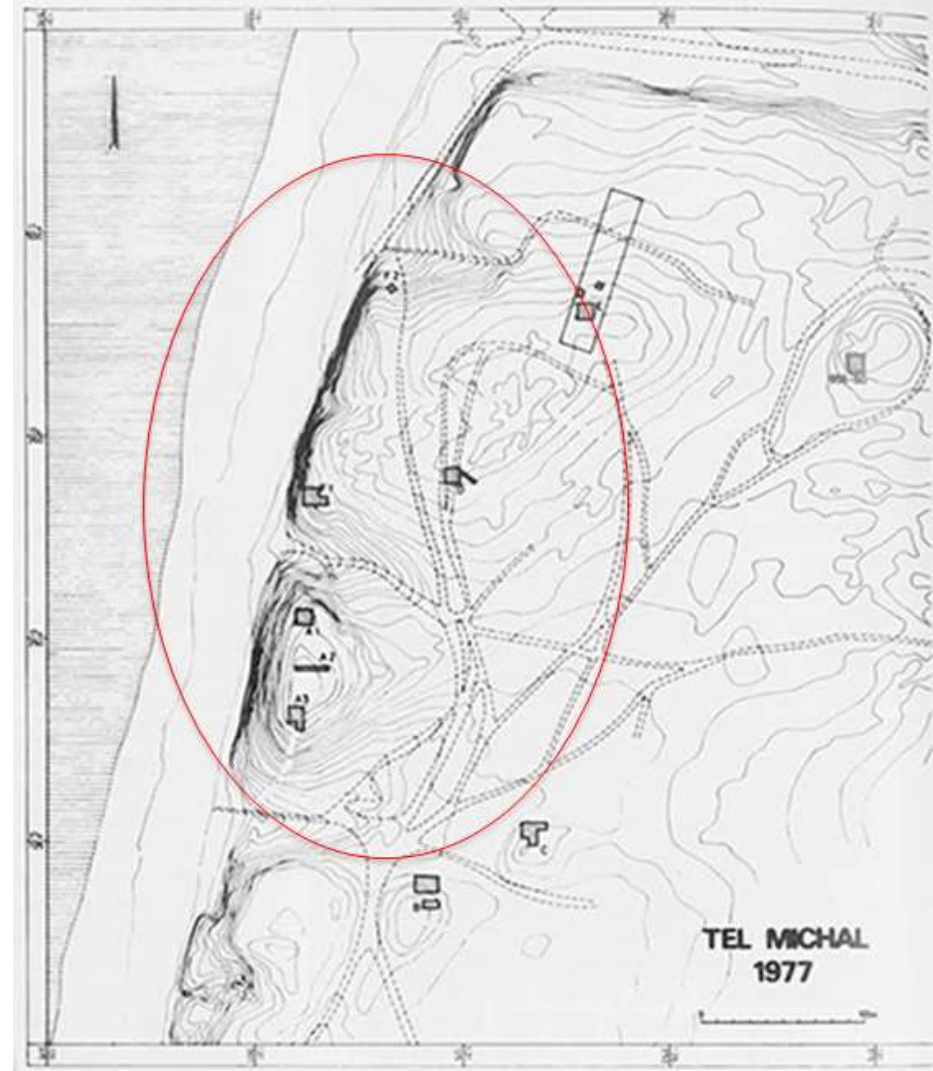
6th century BC – 5th



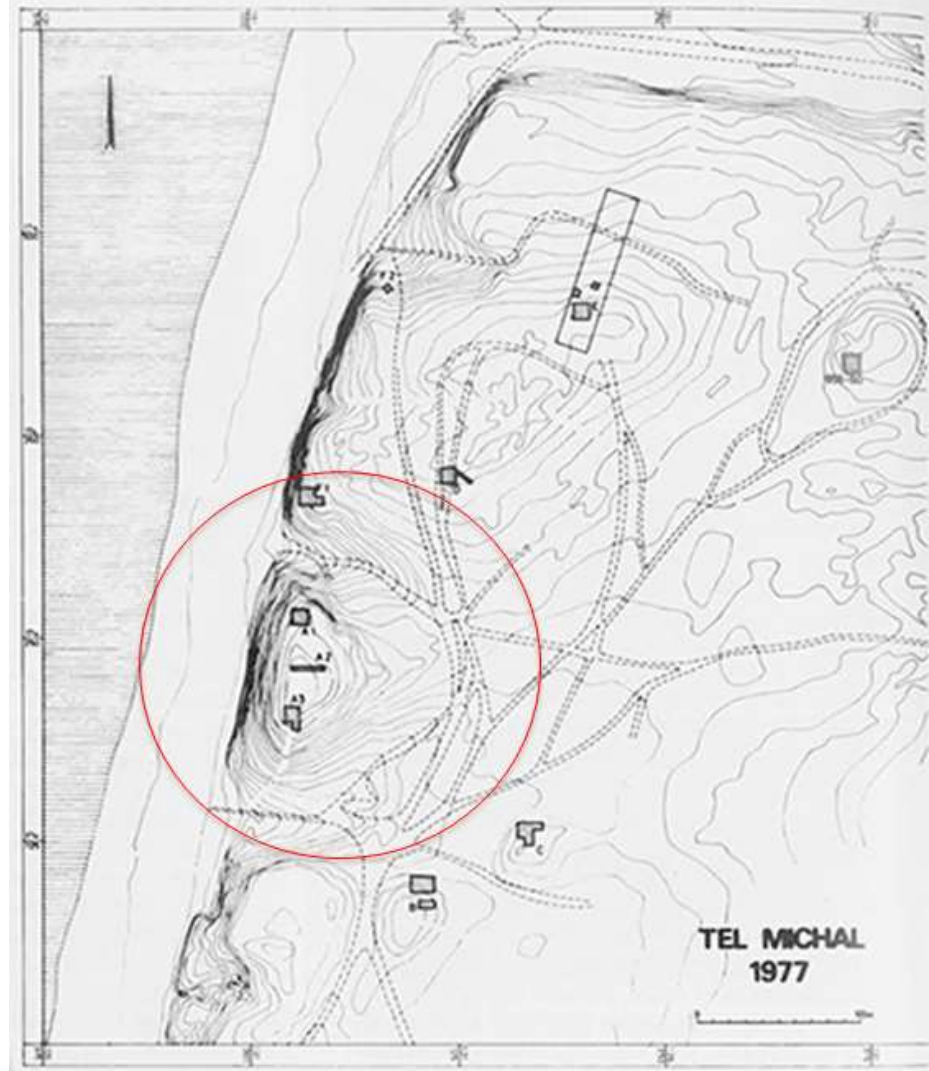
Tel Michal – Past – Hellenistic Period



Tel Michal – Past – Roman Period



Tel Michal – Past – Arab Period



Facts and artifacts

Ground



clay



limestone



sand

Active at night



Migrates in winter



Theba pisana

In the summer it's climbs on the plants and sleeps there to avoid high temperatures on the ground

When it's rain, they wake up, have sex, go to the ground and put their egg in little holes

In the winter they die



Maresia Pulchella

Annual plant

Growing in the beginning of the rains

Growing in sandy patch, especially in Israel

Because of accelerated construction, the plant is in danger of extinction



Daucus carota

grows on the roadside

grows in the spring and summer of the second year

medical uses

it's very high, 2 meters and more



Chrysanthemum coronarium

Annual rate

Grows when there is a lot of nitrogen

Dense



Asparagus stipularis

Grows high, 1,50 – 2 meters

All over the country

Grows in spring in autumn

Birds eat this plant



Pancratium maritimum

Grows on a strip coast,
needs the salt water to grow up
Protected plant



Retama raetam

Perennial

Popular in the south at on the coast

Between january and april it's an amazing
flower

It's smeels very good, attravive for bees and
insects



Desmostachya bipinnata

Perennial

It's grows in the center of the coastal plain

Grows on clay



Lycium schweinfurthi

Verheddert and thorns

In the beginning of the rain it grows up, until the end of the spring



Artemisia monosperma

It grows on the sandsides, it's hold the sands

Grows in autmn from september to october



Verbascum sinuatum

It blooms twice a year

It grows in spring and summer, mainly in june and july

Every each flower grows in one night, until the sunset tot he sunrise



Heterotheca subaxillaris

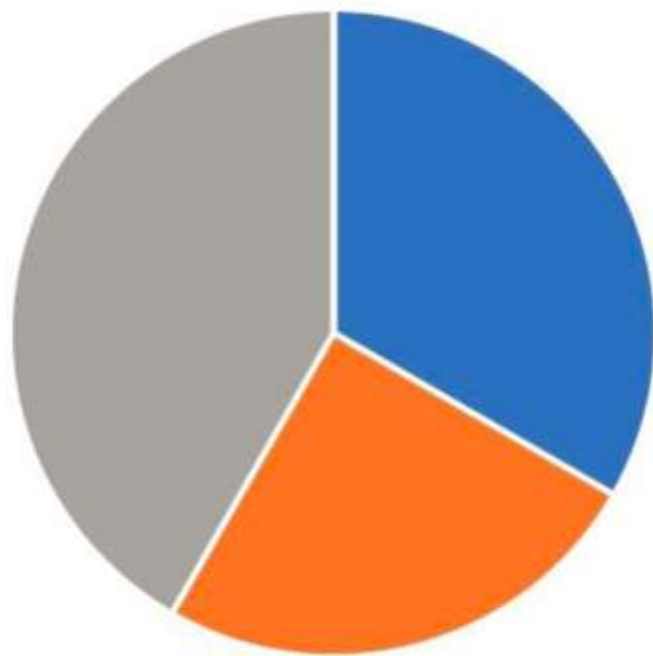
Grows in sands (dunes) by the roadsides

Grown in fertilized places

Endangering the natural vegetation of the coastal plain

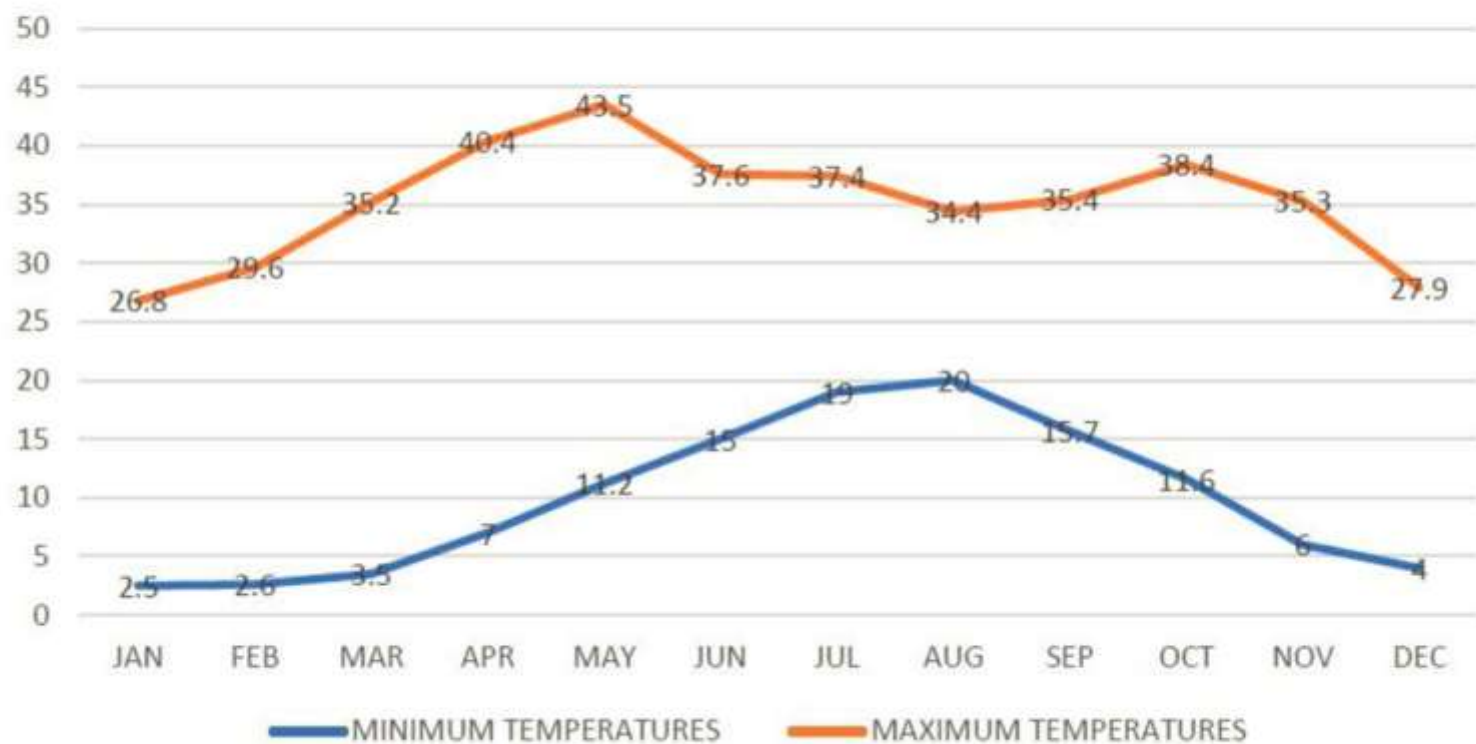


Plants

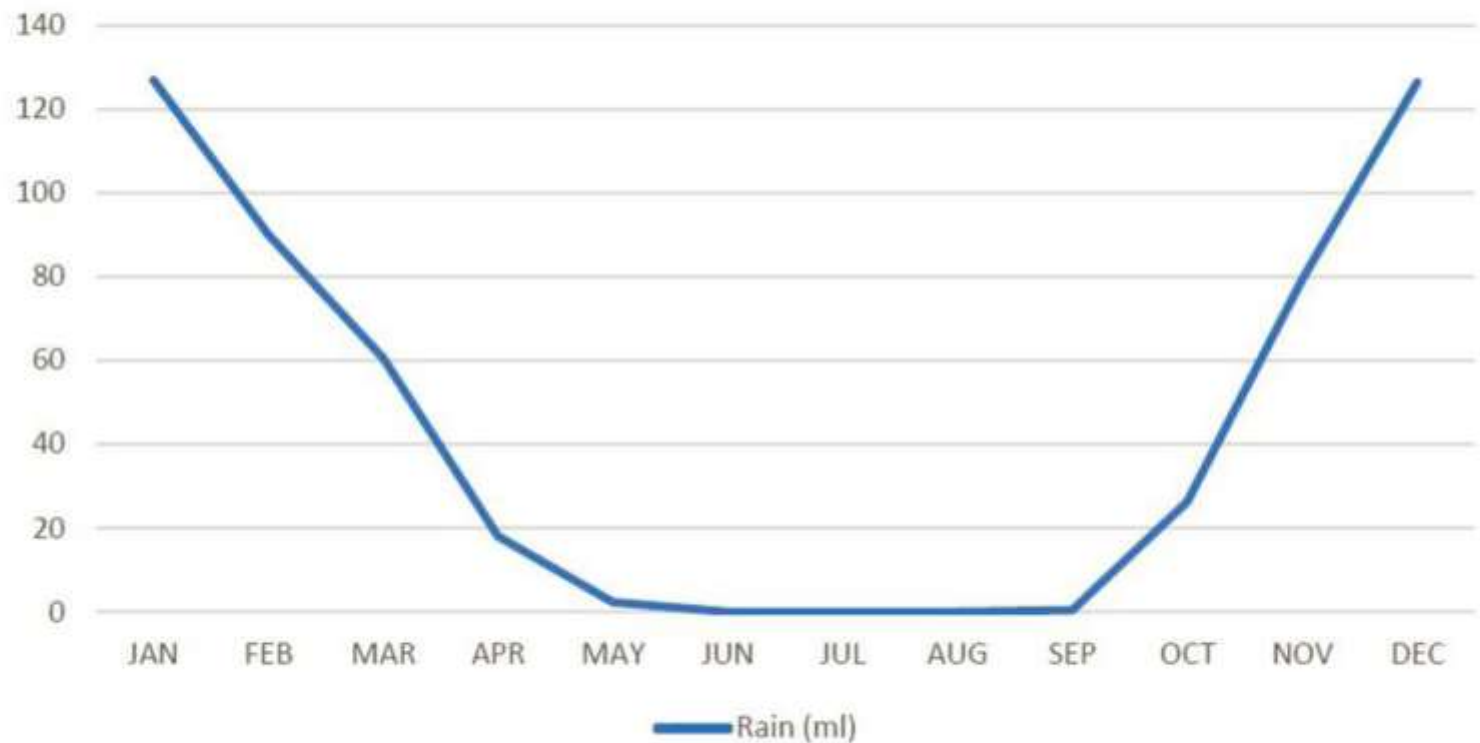


■ Winter ■ SUMMER ■ Annuual

Multi - annual climate information, 1981-2000



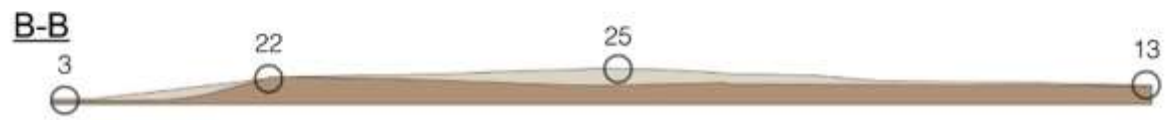
Multi-annual climate information, 1981-2000



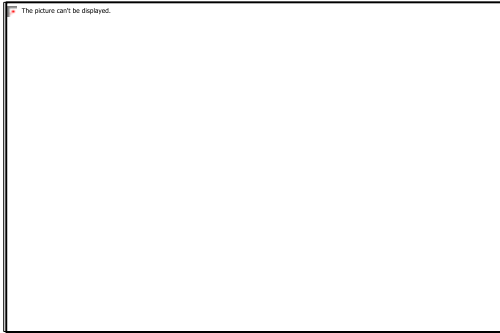
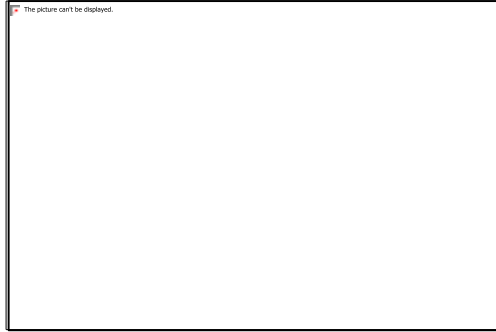
What is happening here

Year	1	5	10
Who?	residents volunteers animals volunteers beach visitors	Photographers students plants birds couples families tourists	High TEC
What			
Where			





Points of interest



PROTECTED AREA



- ▼ ENTRYS
- HIGH PROTECTED AREA
- MIDDLE PROTECTED AREA
- LOW PROTECTED AREA
- NON PROTECTED AREA

AREAS



- ▼ ENTRYS
- WATER AREA
- PROTECTED AREA
- NEW FLOWER AREA

POINTS OF INTEREST



- ▼ ENTRYS
- WATER AREA
- PROTECTED AREA
- NEW FLOWER AREA
- ① WINERY
- ② CASTLE RUINS + VIEW POINT
- ③ WINTER POOL + VIEW POINT
- ④ BIRD WATCHING + VIEW POINT

MOUNTAIN & FOREST



- ▼ ENTRYS
- WATER AREA
- PROTECTED AREA
- NEW FLOWER AREA
- ① WINERY
- ② CASTLE RUINS + VIEW POINT
- ③ WINTER POOL + VIEW POINT
- ④ BIRD WATCHING + VIEW POINT
- MOUNTAIN
- ▨ FOREST

MAINBUILDING



- ▼ ENTRYS
- WATER AREA
- PROTECTED AREA
- NEW FLOWER AREA
- ① WINERY
- ② CASTLE RUINS + VIEW POINT
- ③ WINTER POOL + VIEW POINT
- ④ BIRD WATCHING + VIEW POINT
- MOUNTAIN
- ▨ FOREST
- MAINBUILDING

PERGOLA



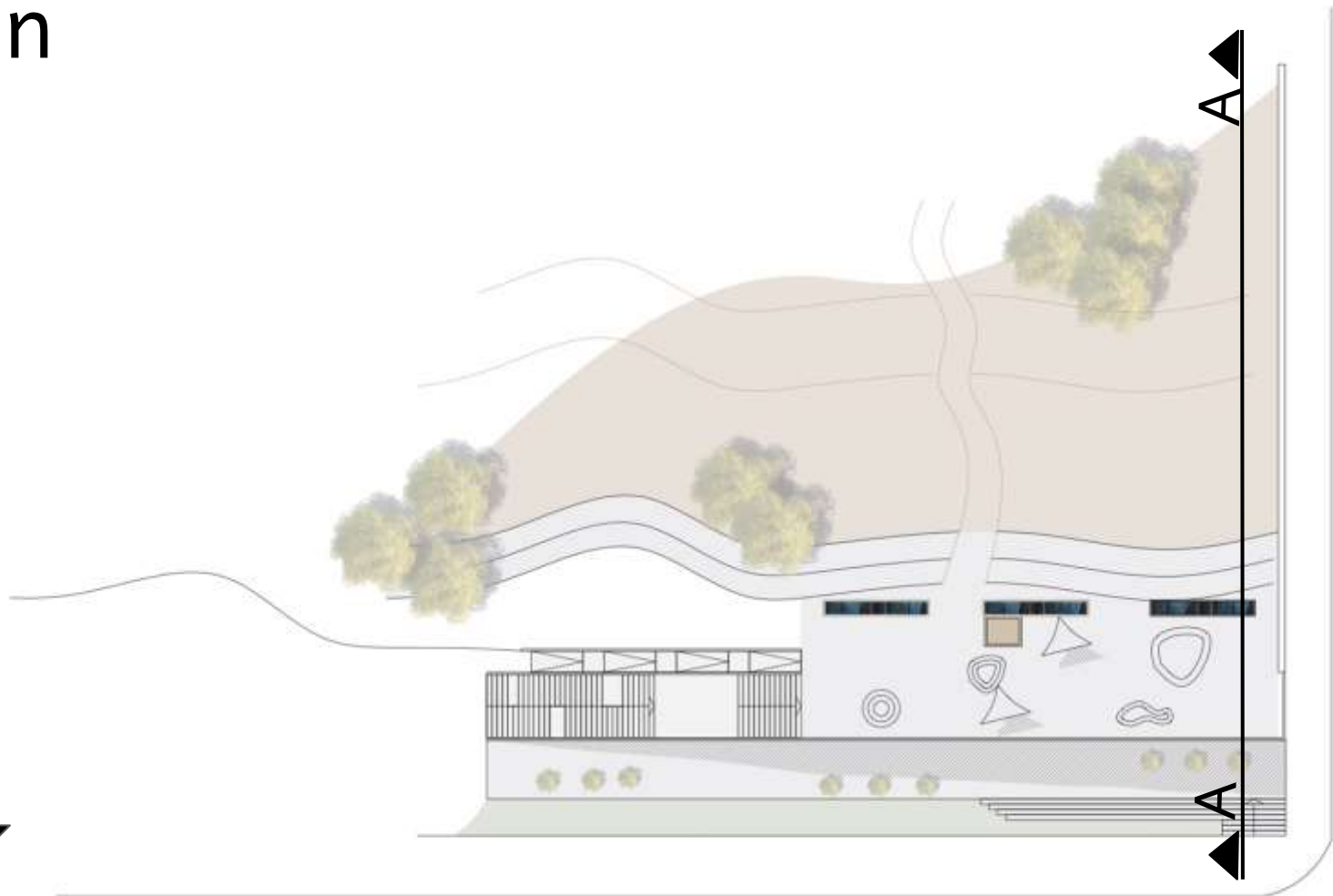
- ▼ ENTRYS
- WATER AREA
- PROTECTED AREA
- NEW FLOWER AREA
- ① WINERY
- ② CASTLE RUINS + VIEW POINT
- ③ WINTER POOL + VIEW POINT
- ④ BIRD WATCHING + VIEW POINT
- MOUNTAIN
- ▨ FOREST
- 1 MAINBUILDING
- 2 PERGOLA (IN 10 YEARS)

CAPTIVITY & NEW POOLS

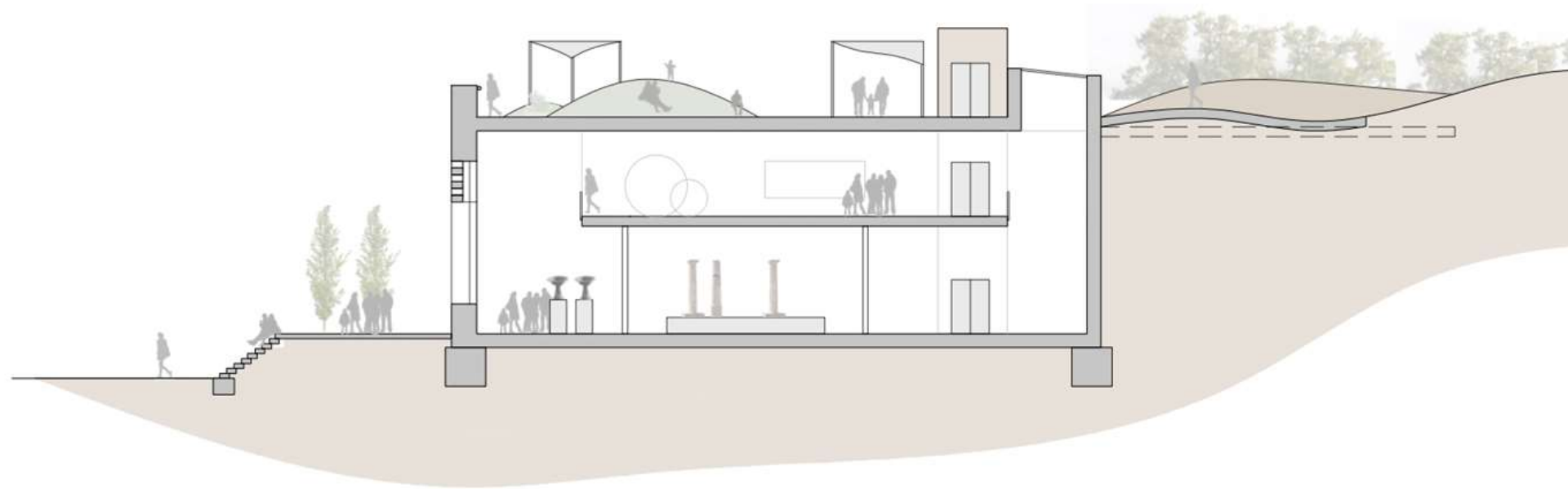


- ▼ ENTRYS
- WATER AREA
- PROTECTED AREA
- NEW FLOWER AREA
- ① WINERY
- ② CASTLE RUINS + VIEW POINT
- ③ WINTER POOL + VIEW POINT
- ④ BIRD WATCHING + VIEW POINT
- MOUNTAIN
- ▨ FOREST
- 1 MAINBUILDING
- 2 PERGOLA (IN 10 YEARS)
- ⑤ NEW POOLS / LAKES
- CAPTIVITY
- ▨ WATER

Plan

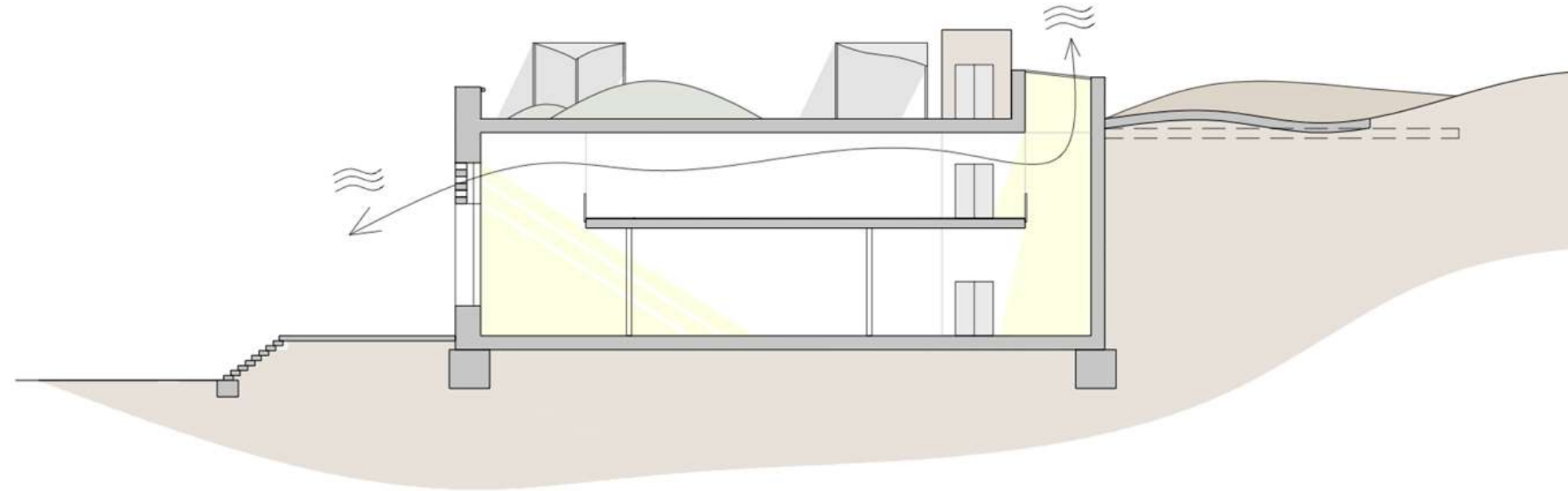


Section A-A



Section A-A

Air circulation
and natural lights



Front



Front



















A group of people is silhouetted against a bright sunset sky. The sun is low on the horizon, creating a strong glow and lens flare. The people are standing on a dark, flat surface, possibly a beach or a field. The overall mood is peaceful and scenic.

Eco-Tel Michal

תל מיכל - אקו

Coastal nature escape

לברוח אל הטבע

