



PRESIDENT'S INTRODUCTORY REPORT

"Landscape architecture can be one of the most rewarding but equally one of the most frustrating professions in the world! Why, you ask? Simply because as soon as one believes we have made some convincing strides to the good, so immediately can one be knocked sideways by a completely unexpected event that demands immediate attention and support. Rarely do we see a natural line of progression that simply sees the profession grow from strength to strength.

The current progress of our application to have the profession listed within the acknowledged professions of EU Directive on the 'Recognition of Professional Qualifications' (2005/36) seems to have met with a good deal of support and we hope to be in a position to meet with the decision makers (if progress remains sound) in late June 2011.



We must all be extremely grateful to Dr. J Jobi from the German Architect's Chamber (BAK) for all of his hard work on our behalf so far. Equally, my engagement with the progress towards 'Les Assises du Paysage' to be held in Strasbourg later in the year (10-12 October 2011) has also been progressing well, with a number of progress meetings and press conferences helping to define and promote the event since the turn of the year. The theme of the programme, 'Landscape as a creator of wealth', ought to appeal to everyone with an interest in the built environment right across Europe and it is hoped that as many of you as can make it will attend the Council of Europe to make the event a truly European-wide success.

... continued on page 2

Nigel Thorne,
EFLA President

In this issue:

EFLA President's introduction	1
Editors introduction	2
EFLA news	3
News from partner organisations	4
Opinions & events	5-6
News from sponsors	7
Events	8-10
Technology	11
EFLA Calendar	12

INTERACTIVE LINKS - CLICK!

EFLA Executive council 2011

PRESIDENT

Nigel Thorne, United Kingdom, n.j.t@btinternet.com

PAST PRESIDENT

Fritz Auweck, Germany, fritz.auweck@fh-weihenstephan.de

SECRETARY GENERAL

Marina Cervera, Spain, cervera_marina@coac.net

TREASURER

Jeremy Dennis, Denmark, jad@kragh-berglund.dk

VICE PRESIDENT EDUCATION

Andreja Tutundzic, Serbia, andrejat@sbb.rs

VICE PRESIDENT PROFESSIONAL PRACTICE

Carlo Bruschi, Italy, carlo.bruschi@tin.it

EXECUTIVE SECRETARY

Christine Bavassa, efla.feap@skynet.be

NEWSLETTER EDITOR

Haris Piplas, Bosnia and Herzegovina, haris.piplas@daad-alumni.de

NEWSLETTER TEAM

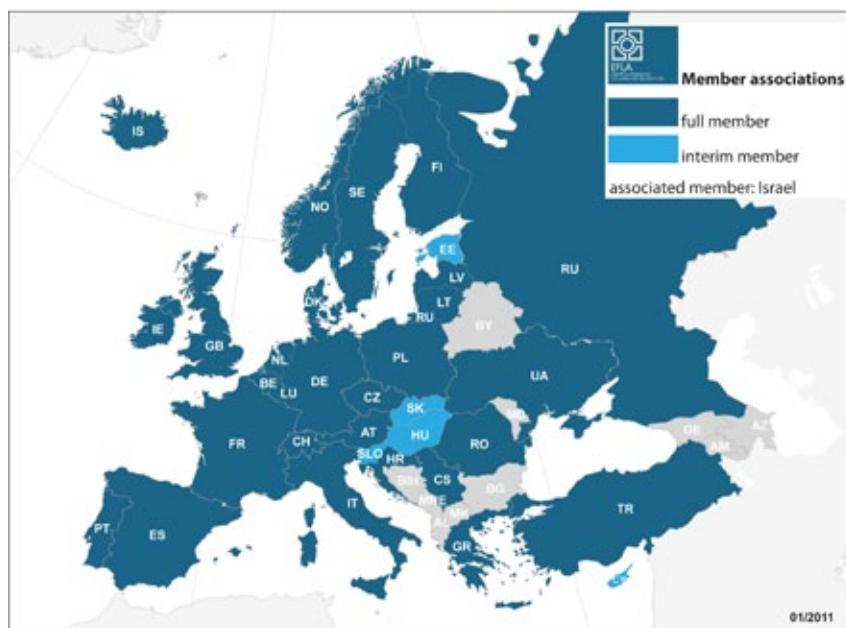
Krzysztof Herman (GRAPHIC DESIGN), Poland, hermankj@gmail.com

Laure Aubert, France, laure.aubert@gmail.com

Edina Pinter, Romania, edina.pinter88@gmail.com

The EFLA Newsletter and the monthly calendar are distributed by email.
Please advise us on efla.feap@skynet.be if you wish to receive this Newsletter.
Please also update us if you email changes.
We welcome contributions and comments.

European Federation for Landscape Architecture
Avenue d'Auderghem, 63, 1040 Brussels, Belgium



01/2011



INTRODUCTIONS

... continued from page 1

But then comes the power-blow and something that could set the profession back many years if we fail to appeal against it. At last year's General Assembly we were able to welcome our colleagues and friends from Estonia and their professional association, ELAU, to become interim members of the Federation – in fact, with their statutes already fully compliant with the demands made by the Federation's constitution, ELAU might have automatically become full members immediately had they chosen to do so. Suddenly, amidst the preparations for the Regional Congress in Tallinn in October, I was asked to write to the Estonian minister to plead on behalf of the profession because there was a governmental decree that landscape architecture was no longer to be considered as a profession in its own right – positively the death-knoll

for landscape architecture in Estonia! Ironically, when I received this immense body-blow, I was sitting in a meeting at the Council of Europe where representatives from the Estonian government announced to the audience that their government was about to sign up to the European Landscape Convention! Needless to say, I have written to the minister on behalf of the Federation, politely emphasising the ridiculous nature of this dichotomy. We hope to have made more positive progress on this matter by the time we all meet in Tallinn later in the year – otherwise I am sure the irony will not be lost on any of us.

So, as seems always to be the case, one step forward and two steps backwards – this doesn't mean we give up; it just makes progress that little bit slower."



EDITOR'S INTRODUCTION

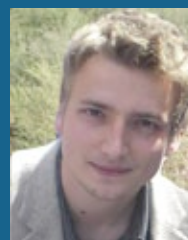
Dear readers,

First of all, we would like to thank to all of you who submitted their contributions for our Summer Edition of the EFLA Newsletter. Receiving many articles, we realized that the first half of 2011 was quiet successful and turbulent for our profession in Europe. Hope to meet and discuss this and other topics with many of you during the IFLA 2011 World Congress in Zurich where, among meeting colleagues from all over the world and listening to many interesting presentations, you will also have the chance to attend the promotion of EFLA's first printed publication named: "Landscape 10 in action: Experience before and after". Our publication was only one part of our EFLA activities of which you can read more in the articles of the EFLA President Nigel Thorne and our other EFLA colleague Edina Pinter (EFLA Image and Student Competition and many more). Regarding events, another highly recommendable one will place in Tallinn in November 2011, the EFLA General Assembly and Conference "Mind the gap-Landscapes for a new era". Besides that, this Newsletter Edition promotes innovative approaches in Landscape Architecture. Such a contribution for comes from an Austrian colleague, Florian Lorenz, who writes about Ecological tendencies in Landscape, Urbanism and Architecture. Our partner Association ELASA (European Association of Landscape Architecture Students) will be holding their meeting parallel to IFLA 2011 World Congress in Zurich giving student participants the opportunity to meet and talk to renowned colleagues.

The report from ELASA's last event in Slovenia is also given in this Newsletter Edition. We also show news from the EU-Teach project where EFLA is also playing an important role. Our partner, the magazine TOPOS launched new Facebook groups. Details you can find inside this issue as well as details about the ECOWEEK event which will be held at the Politecnico di Milano in September 2011. In addition to that, our colleague Ellen Fetzner from Germany talks about the potentials of Online Seminars in Landscape Architecture Education. Last, but of course not least, you can find an article from our main sponsor, the company van Den Berk with the title: "Trees: a legacy to enjoy". At the end, we want to announce that our Newsletter is being transformed and improved in the direction of an Online Journal. The first issue you can expect in late summer. Of course, we look forward for an intensive and fruitful future cooperation. Please do not hesitate to contact us if you have ideas, feedback, comments or proposals.

Best wishes,

Haris Piplas, EFLA Newsletter Chief Editor
haris.piplas@daad-alumni.de





EFLA NEWS

Recent activities of the EFLA Communications group

Rome, a capital which its historical and architectural grandeur leaves a deeply instilled impression in the mind and soul of each inquirer, charmed us with its beauties during our EFLA's Communication Group spring meeting which took place from 24th to 26th of March 2011 - organised parallel to the visit of the EFLA Executive Committee to the Italian Association of Landscape Architects (AIAPP).

The most debated subjects on the Agenda were the release of EFLA's first printed publication which gathers together impressions from first 10 Years of the European Landscape Convention (ELC). You can expect the launch of the named book during the IFLA World Congress in Zurich, 27 to 29th of June 2011.

Also, the launch of a new edition of our Landscape Architecture Image Competition is in progress. This Europe-wide competition is meant to promote and reward the submission of exceptional landscape architectural images. The theme of this year's edition is „Landscapes of diversity“. We seek images that reflect how the outdoor public spaces are the principal point of contact between races, generations and cultures. The selected images and winners will see their images published on both EFLA and UNESCO website. Also, the winner gets the invitation to participate at the EFLA Regional Congress „Mind the Gap - Landscape for a New Era“ which will take place in Tallin, Estonia from 2 to 4th of November 2011.

Another point on our agenda is the launch of an EFLA Student Design Competition. More details about this competition dedicated to young professionals and students will be published soon.

Since EFLA „got social“ we gained more visibility and the chance

for a better promotion of landscape architecture throughout Europe and beyond thanks to Facebook and its over 1400 members who like our page, LinkedIn, Xing and Land8Lounge. Of course, we invite you to join us so you do not miss any interesting news from the profession in Europe and beyond!

■
Edina Pinter
edina.pinter88@gmail.com



EFLA Communications groups in Villa Torlonia

ELASA mini-meeting in Slovenia, March 2011: Winescapes – taste some?



This year ELASA mini-meeting took place in Slovenia, a country with lots of different landscapes and beautiful little towns and villages but also with a strong development of landscape architecture in recent years. The meeting was hosted by students of the University of Ljubljana and in total 35 students from 13 countries took part.

Most parts of the Slovenian landscape are shaped by wine and vineyards and therefore it was obvious to choose the topic of „Winescapes“ for the meeting. The students visited different parts of Slovenia, e.g. the Štajerska region, the Vipava valley and the Karst region and also the capital Ljubljana and learnt more about Slovenian culture and traditions. The focus of the meeting was on sketching and analysing the changing landscape but also on cultivating and trying different types of wines from different regions.

The mini-meeting ended after six days of travelling around Slovenia with an exhibition showing drawings and photographs in the Department of Landscape Architecture in Ljubljana. The event left lots of experiences and inspiration both for the participants and organizers. The next mini-meeting will be in Zurich in June, together with IFLA congress, and the next annual meeting will take place in Germany in August with the topic „Energetic Landscapes“.

■
Julia Jakisch
julia.jakisch@gmx.de



NEWS FROM PARTNER ORGANISATIONS

European teaching contents in landscape architecture (EU-teach)

European aims, strategies and legal requirements have increasingly influence on the work of landscape architects. To have knowledge of them is the basis for a successful participation in the European labour market.

In the project "Implementation of relevant European teaching contents in the studies of landscape architecture (EU-Teach)" four universities (University of Sheffield, University of Kassel, Corvinus University of Budapest and University of Applied Science Weihenstephan-Triesdorf as lead partner), the European Council of Landscape Architecture Schools (ECLAS) and the European Federation of Landscape Architecture (EFLA) are working together to anchor these knowledge more firmly in the higher education of landscape architects.

As a first (important) result the project has developed a "list of relevant European teaching contents" for landscape archi-

tecs. Within a survey also the members of EFLA and ECLAS helped to improve the list. Our thanks to all who contributed to this list!

In the next step the study programmes of the four involved universities will be analysed by means of the list of relevant European teaching contents.

The project will be completed at the end of October, 2011.

The list is available as a download: <http://www.eu-teach.eu/downloads/>

■ Christina Kühnau,
Hochschule Weihenstephan-Triesdorf
christina.kuehnau@hswt.de



Atmosphere from one of the EU-Teach Meetings

Topos and Garten+Landschaft are on Facebook now!

Topos and Garten+Landschaft have a new digital presence on the internet! We know you like us, but do you like us on Facebook yet?

For Topos, come visit us at:
www.facebook.com/toposmagazine

and for Garten+Landschaft come visit us at:
www.facebook.com/gartenlandschaft

If you click the "Like" button we can supply you with exciting content, updates and promotions. This fall we will launch new websites for both magazines, so stay informed with Facebook and by signing up for our newsletters!

For Topos:
<http://service.callwey.de/anmelden-topos/index.html>

and for Garten+Landschaft:
<http://service.callwey.de/anmelden-gala/index.html>





Conceptualizing new design ecologies for landscape ecological urbanism

In this century, mankind's biggest challenges like resource constraint, climate change, or global demographic shifts will be encountered in the urban realm. Over the last decade, concepts such as landscape urbanism, ecological urbanism, or landscape ecological urbanism emerged in an attempt to negotiate the complexity of contemporary (mega)cities. Such approaches are currently the most advanced concepts for designing urban environments which are able to accommodate human life increasingly constrained by environmental pressures.

Nevertheless, in contemporary landscape practice and teaching, we still frequently witness a disconnect between goals like social justice, environmental credibility and cultural meaning of projects, while all of them appear equally important for designers in urbanism. This note provides some inspirational theoretical input for landscape urbanism practice and summarizes an article which will be published in the first issue of the EFLA online journal later this year.

As designers in urbanism we may understand our practice as a guiding of urbanism; in which we equally observe, mitigate and create the processes constituting our urban environments. To juggle urbane aims such as environmental concerns, social justice and cultural vibrancy, one may anticipate putting the human subject in the center - but not in a traditionally humanist way by optimizing systems solely for human needs - rather creating landscapes of a networked human ecology, where a reciprocal responsibility between mankind and supporting ecosystem is possible and sought.

Recent theoretical discourse was to some extent focused on

metrics of how to measure a sustainable urban development. A simple benchmark worth exploring for landscape practice is the adoption of ecological debt and ecological credit where ecological impacts of (built) interventions in the landscape are assessed and compared to the state before the project. But are landscape ecological projects automatically socially just and culturally meaningful? I would answer no, but the integration of ecological narratives extended with an engaged human subject would provide an opportunity to create diverse, lively and meaningful urban landscapes featuring vibrant social ecologies.

In the worldwide urban laboratory there is huge demand and need for new concepts to be integrated into the design of urbanism. Here, designers in urbanism can engage themselves by providing research outcomes and tools previously developed, or, by applying conclusions in adaptive approaches on the ground or in landscape education. To understand one's own work taking place with such a background can provide a vitally inspirational impulse to define one's design and research ecology within the broader context of a globalized practice of landscape ecological urbanism.

Florian Lorenz

Florian Lorenz studied landscape architecture and landscape planning as well as ecology in Vienna and Copenhagen. He is working as ecological designer and researcher in the field of landscape, architecture and urbanism.

Website: www.florianlorenz.com

Blog: www.flo.org

ECOWEEK in Milano, Italy September 12-18, 2011

Following the successful ECOWEEK 2011 conference and workshops in Thessaloniki, Greece in March 2011, with more than 330 participants from 16 countries and 37 design workshops led by experts from Greece and abroad – architects, landscape architects, designers and engineers – ECOWEEK is planning its next conference and workshops to take place in Milano, Italy, in September 12-18, 2011, in collaboration, among others, the Politecnico di Milano.

We expect the participation of important professionals from Italy and abroad, and workshops that will be hosted inside offices of architects, landscape architects, designers and engineers, from Milano and abroad, and at the Politecnico di Milano.

Urban Communities + Green Architecture

Conferenza Internazionale e Workshop di Architettura e Design
International Conference & Workshops for Architecture & Design
Milano, Italy | September 12 - 18, 2011

EARLY BIRD REGISTRATION is open and will remain open till the end of May – when the cost of registration will increase. Register to gain an experience of Milano, the city of Design, and the high-profile, high-quality conference and workshops of ECOWEEK.

For more details click here:

http://ecowee.netfirms.com/ecowee.gr/ecowee2011_MILANO/index.html

To review the design proposals created by the ECOWEEK workshops in Thessaloniki, click here:

<http://ecowee.netfirms.com/ecowee.gr/ecowee2011/workshops.html>

To see photos & videos from ECOWEEK 2011 in Thessaloniki click here:

http://ecowee.netfirms.com/ecowee/press_room_photo_album_ecowee_ENG.htm

We will be happy to see you at ECOWEEK 2011 in Milano!

Elias Messinas
Architect, Environmental Consultant
Founder & Chairman, ECOWEEK
elias@ecowee.org

ECOWEEK
2011 ... habits change ... climate change

MIND THE GAP

Landscapes For A New Era

EFLA REGIONAL CONGRESS
OF LANDSCAPE ARCHITECTURE

02-04 Nov 2011 Tallinn, Estonia

www.efla2011.com efla2011@maastikuarhitekt.ee



NEWS FROM SPONSORS

Trees: a legacy to enjoy



Van den Berk
Nurseries

What is grander than a stately full-grown tree, which has had every opportunity to develop? Nothing, according to us! Whether a tree is standing in the middle of a landscape, in a park, on a square or in your back garden, it adds something everywhere. Whenever you are at a place you feel good in, have you ever wondered how it would look without trees? Unless you're above the tree line, it would all look a lot less attractive without trees. Trees are indispensable for our wellbeing.

Social museum pieces

There is a reason why people flock to the parks on sunny days. People feel comfortable in the presence of large trees. They look great and offer shade and coolness on hot days. Areas with full-grown trees are a great place to be. Trees are the perfect environment to relax, have a picnic, play a game or chat. These museum pieces still have a very social function.

Old trees = sustainable trees

As we are now enjoying the trees which the generations before us planted, we can let future generations enjoy a green legacy. That is why it is important to include trees in new (building) plans at an early stage. Not just to fill up the gaps, but as decisive elements in the outdoor space, with enough room to grow. Unfortunately, that still does not guarantee a long tree life. Town plans can change and hinder trees in their development, trees can be struck down by disease or, in the worst case, chopped down before they reach adulthood. It is important to stress the sustainability aspect of greenery. Old trees are sustainable trees, but trees which have the potential to be sustainable do not always grow old...

Conditions for a future tree

To ensure a tree becomes sustainable, in the sense that future generations can enjoy them, a number of conditions have to be met.

- Start by selecting a good quality tree. A tree which has been replanted regularly and which has been able to develop a healthy root system. A tree with a well-formed crown, which has been skilfully pruned and supported.
- Also select a tree which has been cultivated in a sustainable

manner. In the end, we want to create a green legacy. Sustainably cultivated trees are less vulnerable to external influences, because they have a stronger natural resistance to diseases and pests.

- Select a tree that suits its habitat. Don't only think of soil type, but also other factors such as wind, frost, pavement and humidity. More information about these issues can be found in the tree book 'Van den Berk on trees'.
- Select a species which has the potential of becoming old. In principle, these are the trees which grow more slowly. During growth, smaller cells are formed which harden better. The heartwood in the trees is harder and more durable.
- When the situation at the habitat suffers from the effects of climate change, then select a species which is expected to be more resistant to these effects. (See inset)
- Select a location for the tree where it has enough room, both above and below ground. Take into account that a tree from the first growth category needs around a cubic meter of space underground per growth year.
- Make sure the tree is professionally planted. The location should be assessed beforehand, and if necessary the soil should be improved. The trees should also be properly anchored.
- Ensure proper support pruning during the first few years, for the formation of a beautiful, balanced crown. Support pruning is not necessary when a larger-sized tree is planted, in which case the crown has already been formed at the nursery.

There are, of course, many other factors we are unable to influence, but by adhering to these rules, you are giving your tree the best start for a green future.

Effects of climate change

For trees:

- A. Stronger solar radiation
- B. Longer periods of drought
- C. Heavy downpours
- D. Fluctuations in the water table
- E. Occurrence of diseases and pests

Some species with are resistant to these effects are:

- *Metasequoia glyptostroboides* (A.B.C.D.E)
- *Celtis australis* (A.B.C.E.)
- *Ginkgo biloba* (A.B.C.E.)
- *Quercus palustris* (A.B.C.D.E.)
- *Platanus acerifolia* (A.B.C.D.)
- *Gleditsia triacanthos* (A.B.C.E.)
- *Pinus nigra nigra* (A.B.E.)
- *Pinus sylvestris* (A.B.E.)





LANDMARKS OF CONTEMPORARY LANDSCAPE ARCHITECTURE

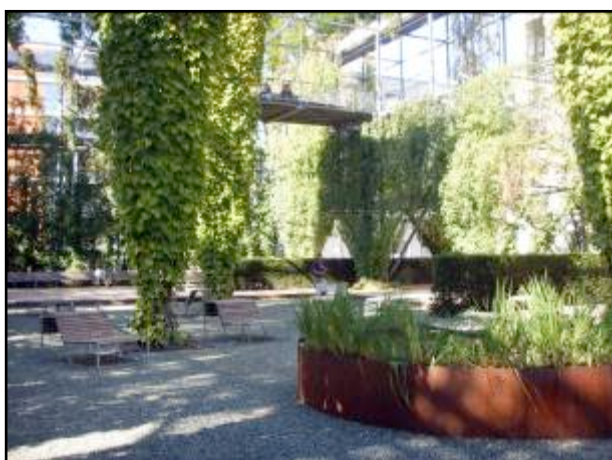
Why you should attend this year's IFLA World Congress in Zurich?

In the northern districts of the City of Zurich Grün Stadt Zürich, the city's Office of Parks and Open Spaces, has built some innovative parks within just a few years time. All of them are situated within short walking distance. Joining the IFLA World Congress is an excellent opportunity to study landscape architecture at its best – and in their original, three-dimensional shape.

The Oerlikon quarter in the northern part of the City of Zurich was characterised by its heavy industry and mechanical engineering factories until the 1990s.

Oerliker Park was created in 2001 as the first of four parks, which were realised in order to refurbish the area formerly inaccessible to the public. The park designed by Zulauf, Seippel, Schweingruber Landscape Architects and Hubacher and Haerle Architects was developed successfully from an invited study assignment.

Over time the foliage of the thickly planted ash trees will form a green hall and connect both parts of the park across the street. To ensure high adaptability to future usage, a separate "intervention zone" was created next to the glade in the park which was intended for future developments. The most obvious result of this process is the new playground in the Oerliker Park, which was inaugurated in 2009. The multi-purpose aspect is supported by a pavilion housing the necessary fixtures and fittings for various events. A tower leads out as a vertical path through the tree cover across the horizon of the buildings. It evokes memories of the high chimneys in the former industrial area and represents the old desire for views and distance. Zurich City Council considered the Oerliker Park to be a good example of a responsible construction ethos and architectural quality with an award from the City of Zurich for good construction in 2001.



The **MFO-Park** is characterised by its modern and unusual design. The area of land where the park is located was used by the former engineering works Maschinenfabrik Oerlikon (MFO) for around 100 years. The project drafted by the planning group Burckhardt + Partner and Raderschall Landschaftsarchitekten AG was selected in a two-stage, international competition.

Its large "park house" is the same size as one of the former factory buildings, a double-walled construction covered by a trellis reminiscent of ancient garden design and covered with plants. The large hall space is broken up by four plant-covered wire chalices. The water basin planted with iris is located in a sunken area. The spaces between the double walls are dotted with staircases, covered walls, and projecting loggias. The sun deck high up on the roof offers a view over North Zurich.

The MFO-Park accommodates a number of different activities. Major event, open-air cinema, theatre, concerts, etc. are possible. The Baroque park theatre with clipped hedges is worth mentioning at this point. Small silent garden rooms with a view into the hall are created in the spaces between the walls, just like opera boxes for reading, loving, dreaming ...

The park's innovative concept has won many national and international awards since its opening in 2002.

Louis-Häfliger-Park was envisaged as a neighbourhood park allowing people who live or work here to relax and meet. The park is named after Louis Häfliger (1904-1993), the "Saviour" of the Nazi concentration camp Mauthausen. It is located in a very mixed environment, embedded between the Regina-Kägi-Hof cooperative settlement, the existing production buildings for Oerlikon-Contraves AG, and new service buildings. The piece of land on which the park is located today was part of the munitions laboratories of Oerlikon Bührle AG.

The project called "Quilt" was drafted by Kuhn Truninger Landscape Architects, Zurich, Pascal Wiedemann, Chur and Grego & Smole-nicky Architects, Zurich.



EVENTS

The design concept was based on the abolition of borders between the park, industry, and residential areas. Different fields generate a diverse space. The park refers to the history of the site and the environment in its materialisation, form, and size and thus creates locations with a special character. For example, the eight grass pyramids in the lawn remind us of the former funnels ammunition huts, the form of which just has been protruded. The park's patchwork is complemented with a band of play equipment for children, a blue sports pitch for ball games and a timber stage.

Wahlenpark in proximity to Oerliker Park is used both for recreation in the quarter and also as a schoolyard for the school nearby. It was created in 2005 as the last of the four parks within the framework of the development Centre North Zurich "Zentrum Zürich Nord". The generous park lawns invite you to take part in sport and games, to paddle in the water basin, and to take a stroll in the beech woods. At night, the 160 m long seating-bauk is lit in blue colour with 7000 glass stones and changes the park into a fairytale place.

The project, which was designed by Dipol Landscape Architects, Basel and Christopher T. Hunziker, Zurich in cooperation with the engineering company Hans H. Moser, Zurich was selected in an internationally advertised competition. In 2004, the construction of the park started with a full clean-up of the contaminated sites. The Wahlenpark is named after the federal councillor Friedrich Traugott Wahlen (1899-1985). During World War II he successfully increased by means of his "Plan Wahlen" the production of staple food by transforming public parks and sports facilities into agricultural land, which was then mainly used to plant potatoes and crops.

Max Bill Square (Max-Bill-Platz) is striking with its unconventional geometric pattern and the contrasting loosely arranged pine trees. With the neighbouring businesses, restaurants, and the hotel, as well as the commitment of the IG Max-Bill-Platz, it has become a true centre for the new district.

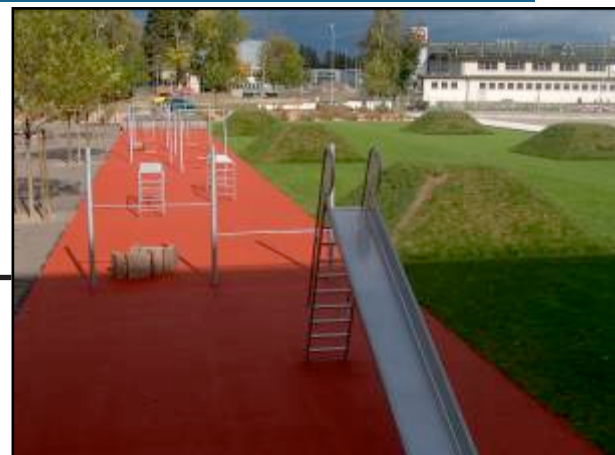
Like the four new parks, Max-Bill-Platz was conceived as part of the district development. In accordance with the outline plan for the special building regulations, it was developed by private investors and handed over to the city after completion. The winner of the competition was the Team Haerle Hubacher Architects with the Landscape Architects Schweingruber Zulauf and Zschokke Gloor. The square is named after Max Bill (1908-1994), who was a Zurich artist, designer, and architect with an international reputation.

In 2007, the Swiss magazine for architecture and design Hochparterre awarded the Max-Bill-Platz the Golden Hare in the category Countryside.

Gustav-Amman-Park, which is a protected monument, supplements the park landscape in Oerlikon. Formerly hidden behind factory buildings, the garden was undiscovered until a few years ago. In 1942, a "welfare building" and accompanying park were built on the site of the former tool factory Bührle & Co for their staff. The landscape architect Gustav Ammann created a peaceful refuge from the noise of the factory.

With the conversion of parts of the factory area, the former welfare garden was opened to the public and renamed as the Gustav-Ammann-Park. As before, the park is privately owned and the right of use by the population and maintenance by Grün Stadt Zürich is regulated in a contract.

For the most part, the park retained its original form, however many areas were in a bad condition and had to be renovated. On behalf of Grün Stadt Zürich, Ryffel & Ryffel Landscape Architects, Uster composed a written report in 1994 and from 2004 to 2005 they carefully restored the park with consideration of the garden as a monument.





EVENTS

Andreas park, an open space along Andreastrasse further to the east of Oerlikon railway station is shaped by its succession of seats, alcoves, and playgrounds. A grove-like group of trees acts as a connecting element between the public open areas and the courtyards. Completed in 2008, it was developed as an overall concept to improve the appearance of the new office and residential area.



Leutschenpark and its flowing shapes bring a new accent to the former industrial and commercial district of Leutschenbach and mark its newly established centre. In 2002, a competition was held by the City of Zurich to design the Leutschenpark and the Leutschenbachstrasse. The jury selected the top-rated project from the team Dipol Landscape Architects, Basel and Christopher T. Hunziker, Zurich for further processing.

The gravel and grass areas are partly planted with trees. A white concrete sitting wall encircles the bullet catcher for the former shooting range and forms a giant "tree pot" which gives the site its particular character. The bench that runs around is integrated in the wall and is illuminated at night. The randomly placed Gleditsia provide an airy atmosphere with their slender, light green and yellow foliage. The park is complemented with a pool, a stage, and a play area.

The blue "Leutschen Light" that shines at night floats between the treetops. The light installation, which was developed by the artist Christoph T. Hunziker provokes memories of the Leutschenbach stream which flows under the surface and accompanies the visitors on their stroll through the park. A small drinking fountain provides the soundtrack for this. Leutschenpark was inaugurated in 2008.



Finally, outside of the city limits, but still in the Leutschenbach catchment area, a

large park area has been created with the **Opfikerpark** in the new neighbourhood Glattpark. Opfikerpark was designed by the office of Gabriele Kiefer Landscape Architect in Berlin and completed in 2006. ■

Lukas Handschin



48TH **IFLA WORLD CONGRESS**
June 27–29 2011 **Switzerland**

Bridging Institutional and National Boundaries with Virtual Classrooms

Since 2008 a group of LE:NOTRE member schools has been exploring the potentials of virtual classrooms and collaborative writing for landscape architecture education. The motivation for organising and analysing these teaching events has been primarily based on three assumptions: Firstly, international student groups can develop multicultural perspectives on the respective educational topics while working together synchronously and asynchronously, thereby developing intercultural and communication competence. Secondly, developing, documenting and archiving both educational contents and student's artefacts with the help of WIKIs improve the overall educational performance. And thirdly, collaborative teaching activities across institutional and national boundaries create fruitful synergy effects in addition to mutual stimulation of the teaching staff. Special attention was paid on providing possibilities for intensive cooperation of international students in small groups in order to foster their intercultural skills.

In addition, this e-learning based learning mode enables cooperation of different actors from education, professional practise and public administration without producing additional travel costs and travel time. This potential is still unexplored for the continuous professional development of landscape architects in Europe.

The organisation was done by Ellen Fetzer from Nürtingen-Geislingen University in the context of the IMLA Master programme and Diedrich Bruns and Heike Kaiser from Kassel University, partly with financial support from the LE:NORTRE Mundus project. Altogether, the seminars were attended by over one hundred students and lecturers from about 40 different countries. A continuation is planned to start in October 2011. You may contact Ellen Fetzer (ellen.fetzer@hfwu.de) if you wish to learn more or get involved. A full documentation of all seminars including lecture recordings and evaluations is available under this link: <http://draco.hfwu.de/~wikienfk5/index.php>. ■

Image: Cooperation in the virtual classroom: students select themes from a topic map and small groups are developed on this basis





CALENDAR

JUNE 2011

EUROPAN 11 COMPETITION. Resonance between Territories and Ways of Life. What Architecture for Sustainable Cities? [HTTP://WWW.EUROPAN-EUROPE.COM/E11/EN/HOME/](http://www.europan-europe.com/E11/EN/HOME/)

CLOSING DATE FOR REGISTRATION: 10 JUNE, 2011 - PARIS, FRANCE

ABERDEEN CITY GARDEN PROJECT. The £140m project will radically transform a strategic central location, raising the nineteenth-century Union Terrace Gardens and covering the unattractive Denburn dual carriageway and railway line. [HTTP://WWW.MALCOLMREADING.CO.UK/ARCHITECTURALCOMPETITIONS/CITYGARDEN](http://www.malcolmreading.co.uk/architecturalcompetitions/citygarden)

DEADLINE FOR SUBMISSION: 13 JUNE, 2011

PEMAT '11 / PEMKON-3 MEETINGS. Turkish Landscape Architecture schools annual meeting - PEMAT organized by Istanbul Technical University. [HTTP://WWW.ECLAS.ORG/EVENT-DETAILS.PHP?EVENT_ID=412](http://www.eclas.org/event-details.php?event_id=412)

14-16 JUNE, 2011 - ISTANBUL, TURKEY

CALL FOR PAPERS. JOURNÉES DOCTORALES DE PAYSAGE. The École nationale supérieure de Paysage de Versailles-Marseille organises the fourth edition of the Journées Doctorales de Paysage which will be held on 24-25 November 2011. a.hassaine@versailles.ecole-paysage.fr and chsantini@gmail.com

DEADLINE FOR SUBMISSION: 15 JUNE, 2011

PRAGUE QUADRENNIAL OF PERFORMANCE DESIGN AND SPACE. The Prague Quadrennial is the largest scenography/performance design event. [HTTP://WWW.PQ.CZ/EN](http://www.pq.cz/en)

16-26 JUNE, 2011 - PRAGUE (VARIOUS LOCATIONS), CZECH REP.

35TH SESSION OF THE WORLD HERITAGE COMMITTEE. To examine the proposals made by States Parties with a view to identifying cultural and natural properties of outstanding universal value to be protected under the Convention and added to the World Heritage List. [HTTP://WWW.UNESCO.ORG/NEW/EN/UNESCO/EVENTS/MAJOR-EVENTS/?TX_BROWSER_PI1%5BshowUid%5D=1330&cHash=5eb131d557](http://www.unesco.org/new/en/unesco/events/major-events/?tx_browser_pi1%5BshowUid%5D=1330&cHash=5eb131d557)

19-29 JUNE, 2011 - PARIS, FRANCE

SCALES OF NATURE: FROM URBAN LANDSCAPES TO ALPINE GARDENS. IFLA 48th World Congress. [WWW.IFLA2011.COM](http://www.ifla2011.com)

27-29 JUNE, 2011 - ZÜRICH, SWITZERLAND

OPEN SPACE, PEOPLE SPACE: INCLUSIVE DESIGN FOR GETTING OUTDOORS. The conference will focus on recent research into the design and provision of accessible outdoor environments for everyone. [HTTP://WWW.OPENSOURCE.ECA.AC.UK/CONFERENCE2011/CONFBACKGROUND.HTM](http://www.openspace.eca.ac.uk/conference2011/confbackground.htm)

27-29 JUNE, 2011 - EDINBURGH, UK

BIG LANDSCAPE 2020 SLIC/LANDSCAPE INSTITUTE STUDENT CONFERENCE. BIG LANDSCAPE 2020 looks to the future both for landscape schemes and for today's students who as tomorrow's professionals will be shaping that future. [HTTP://THEBIGLANDSCAPECONFERENCE.NING.COM/](http://thebiglandscapeconference.ning.com/)

1-3 JULY, 2011 - LONDON, UK

LAND8 WEBINAR: SKETCHUP AND SHADERLIGHT. Join [Daniel Tal](#) and learn how to create photorealistic renderings using SketchUp and Shaderlight. Shaderlight, by [ARTVPS](#), is an integrated rendering program that works within SketchUp. Shaderlight can transform a simple SketchUp model into a more realistic representation ideal for design expression and client presentation. [HTTP://LAND8LOUNGE.COM/EVENTS/LAND8-WEBINAR-SKETCHUP-AND](http://land8lounge.com/events/land8-webinar-sketchup-and)

ON-LINE. JULY 6, 13, 20, 27 AND AUGUST 3, 2011 - 6:00p - 7:00p PDT (your time zone)

PORTUGAL. Paisajes contrastados: Pasado-Futuro. Viaje de estudio a Portugal. Organizado por la AEP (Asociación Española de Paisajistas). Del 16 al 22 de Julio. [HTTP://WWW.AEPAISAJISTAS.ORG/](http://www.aepaisajistas.org/)

RESERVAS ANTES DEL 13 DE JUNIO, 2011

CITY-SENSE: SHAPING OUR ENVIRONMENT WITH REAL-TIME DATA. A competition which aims to promote discussion and research through which to generate insights and visions, ideas and proposals that help us envisage what the city and the habitat of the 21st century will be like. [HTTP://WWW.ADVANCEDARCHITECTURECONTEST.ORG/](http://www.advancedarchitecturecontest.org/)

Submission deadline: 26 SEPTEMBER, 2011 - BARCELONA, SPAIN

CALL FOR PAPERS - 55TH IFHP WORLD CONGRESS: THE IMPACT OF HOUSING AND PLANNING ON THE ECONOMY (AND VICE VERSA). [WWW.IFHP2011TALLINN.COM.EE](http://www.ifhp2011tallinn.com.ee)

11 - 14 SEPTEMBER 2011 - TALLINN, ESTONIA