

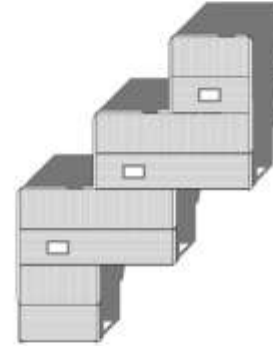
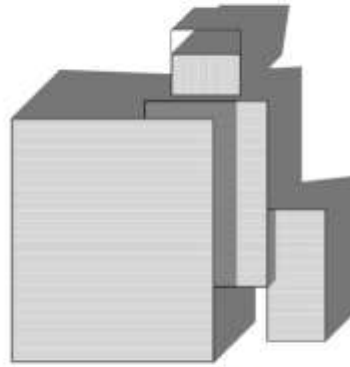
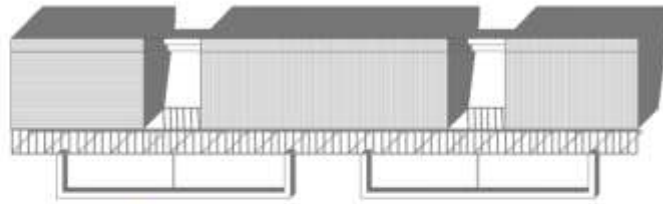
MIŠTÓ HOUSING

ECOWEEK
Milan 2011



MIŠTÓ HOUSING

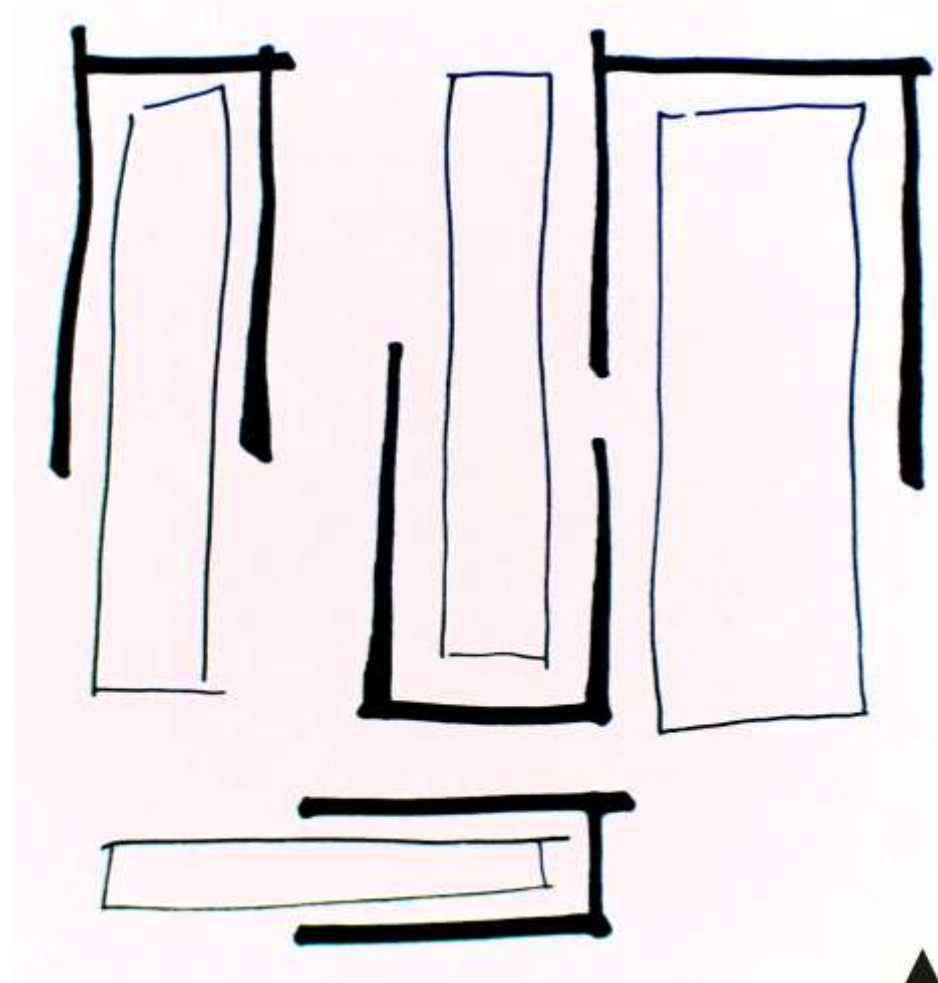
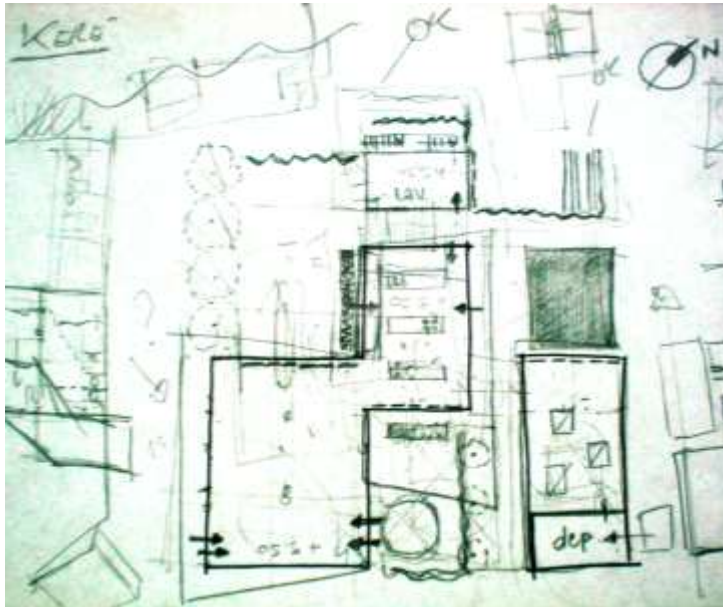
ECOWEEK
Milan 2011



MIŠTÓ HOUSING

ECOWEEK
Milan 2011

Our project is about the design of common areas of a gypsy village. After a meeting in which we discovered traditions of gipsy, we decided to put in the hypothetic area four leading function: a kitchen, a laundry, a big multifunctional room and a laboratory. For the construction of all buildings we use straw and wood, except for the bathroom where we use concrete. Above roofs we use PVC in order to enhance the sustainable peculiarities of the building.



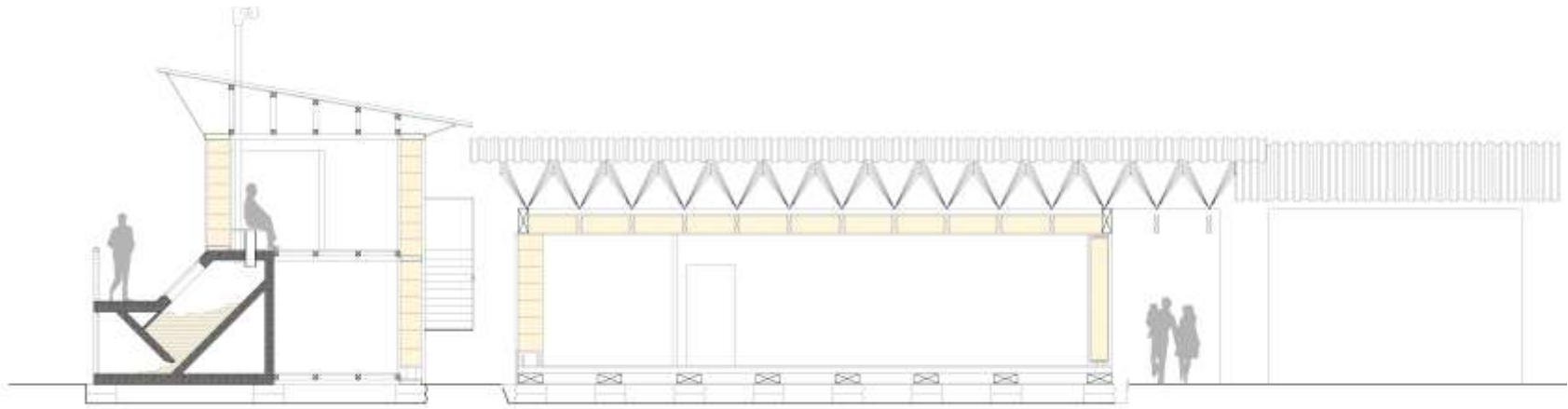
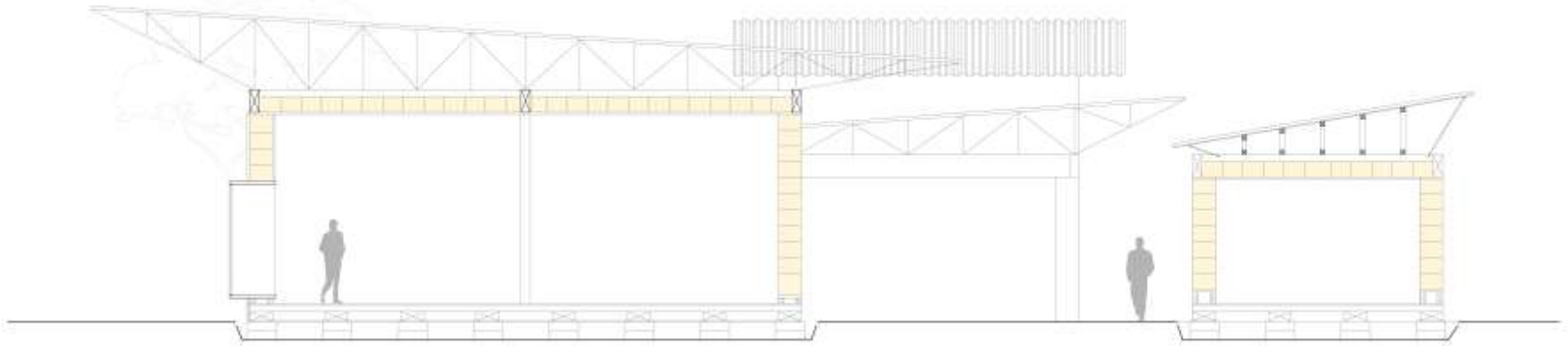
MIŠTÓ HOUSING

ECOWEEK
Milan 2011



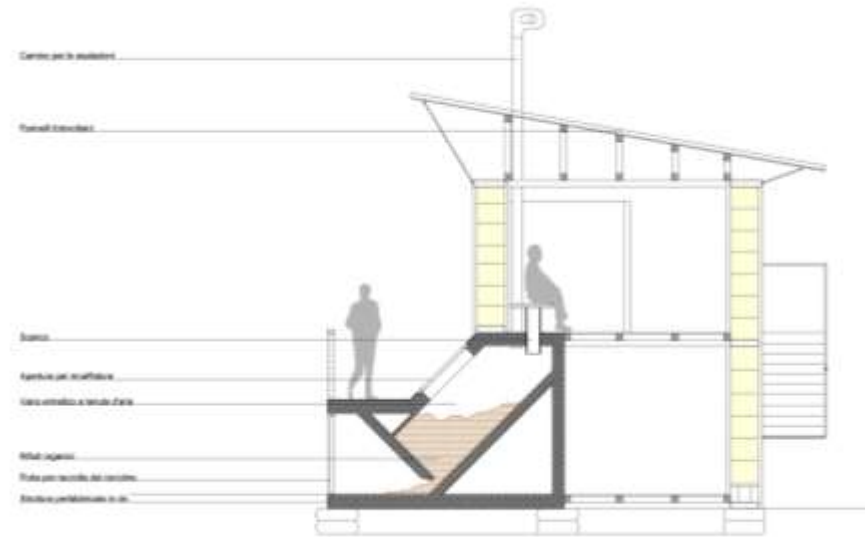
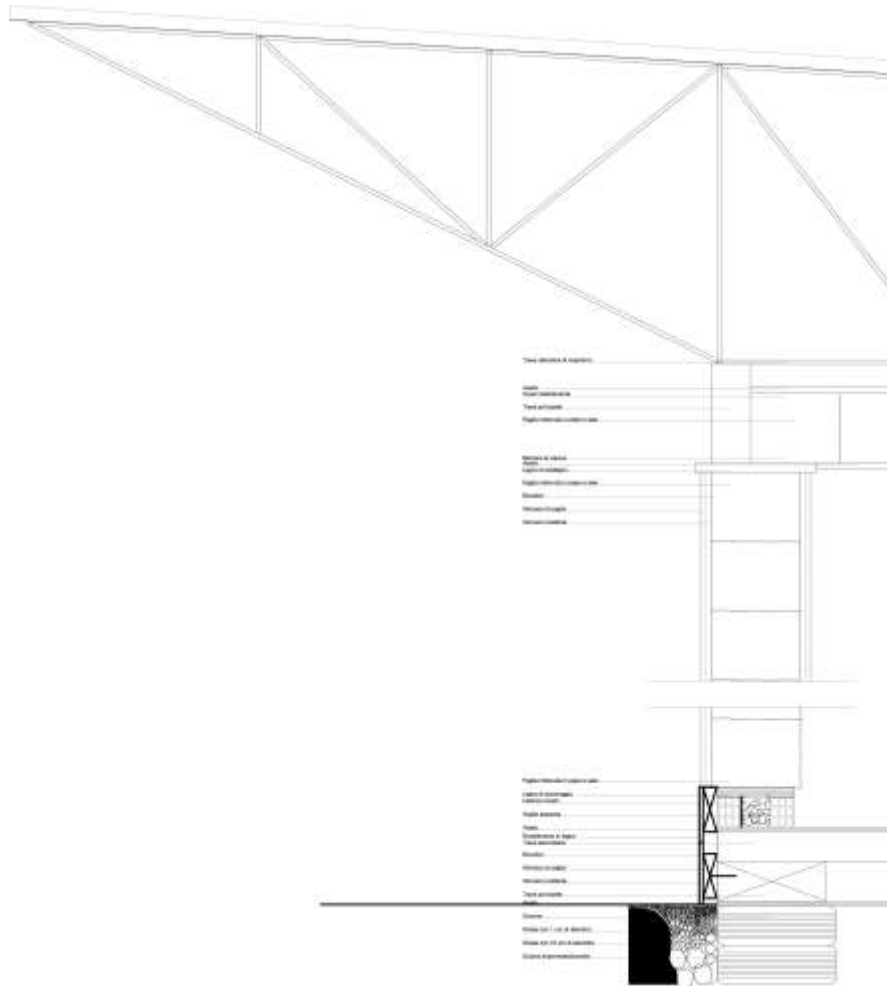
MIŠTÓ HOUSING

ECOWEEK
Milan 2011



MIŠTÓ HOUSING

ECOWEEK
Milan 2011



MIŠTÓ

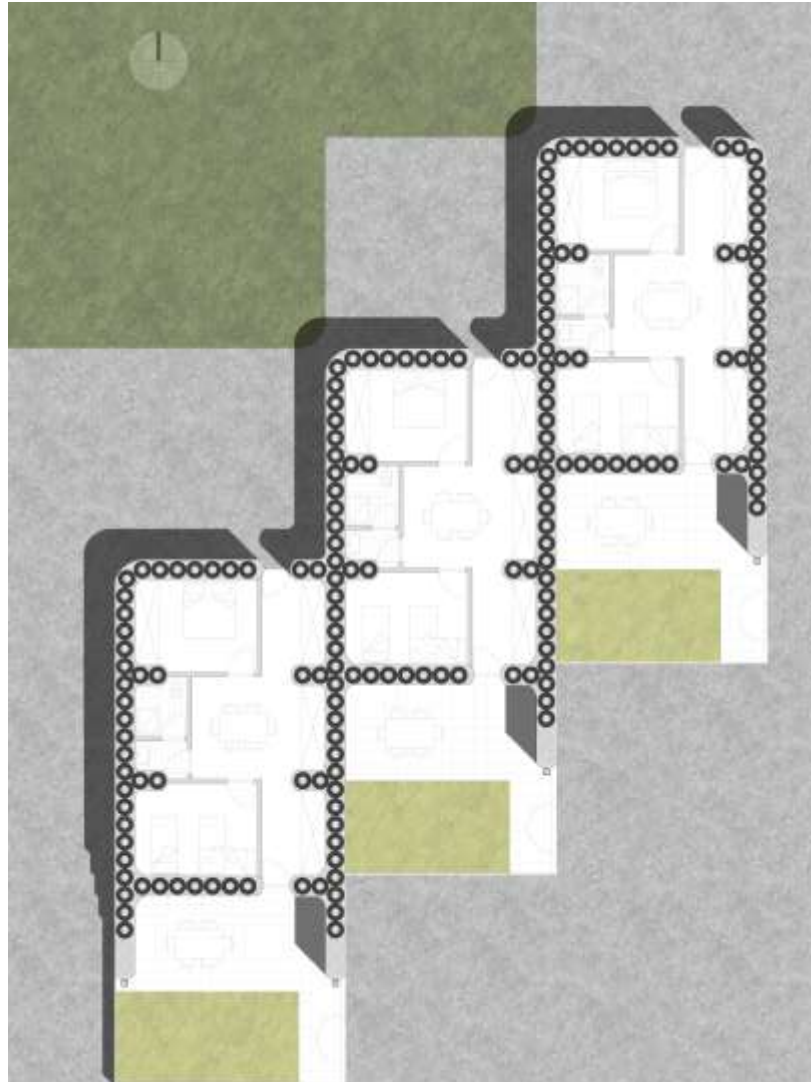
HOUSING

ECOWEEK
Milan 2011

The main purpose of our project is the development of a sustainable architecture that has to be low cost, flexible, with easy maintenance and, above all, a house that could be build by the population itself.

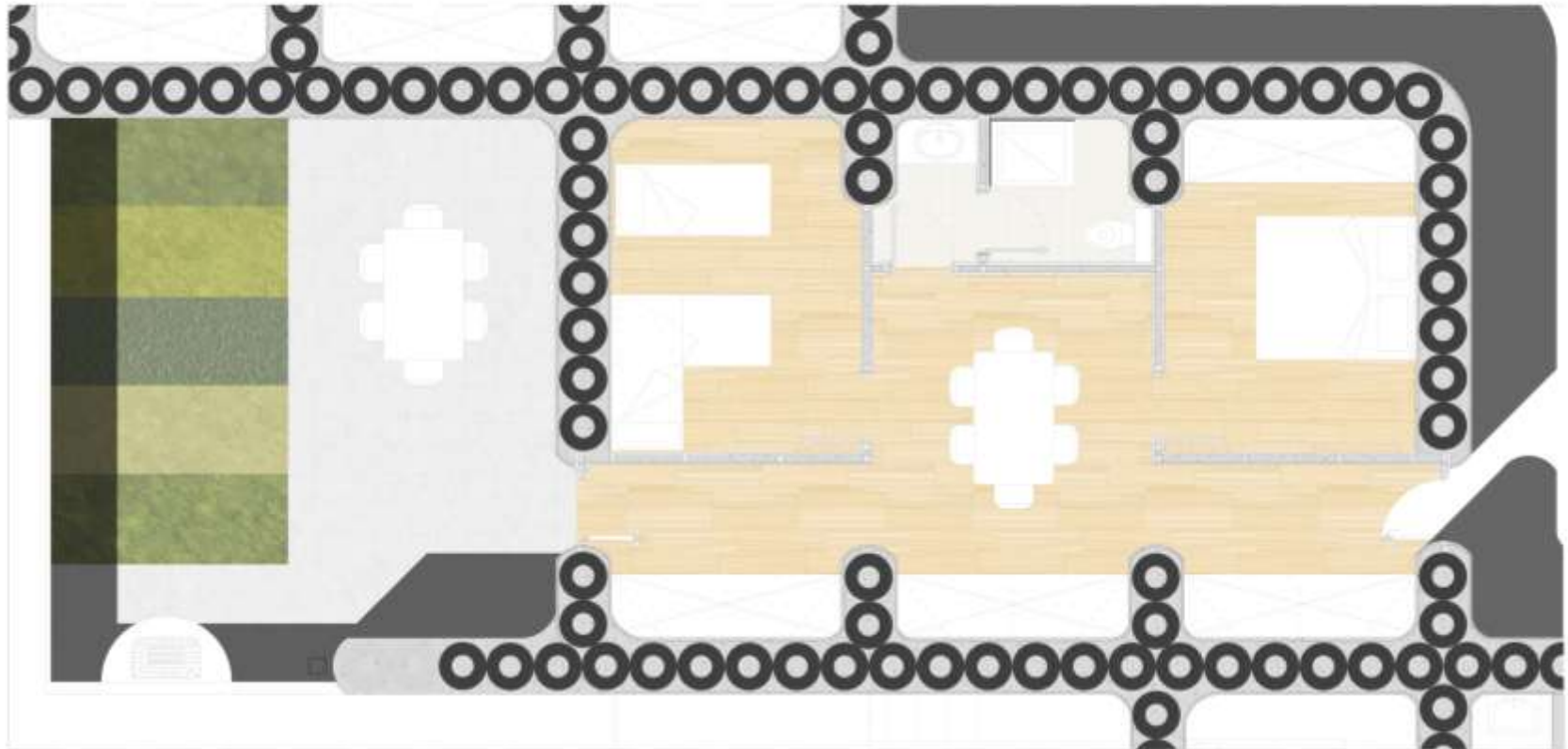
We manage to achieve these objectives by using tires as principal components of our structure, filled with earth and then covered with a layer of plaster.

We designed also a green roof in combination with the technology of PV film in order to self produce the energy for the house.



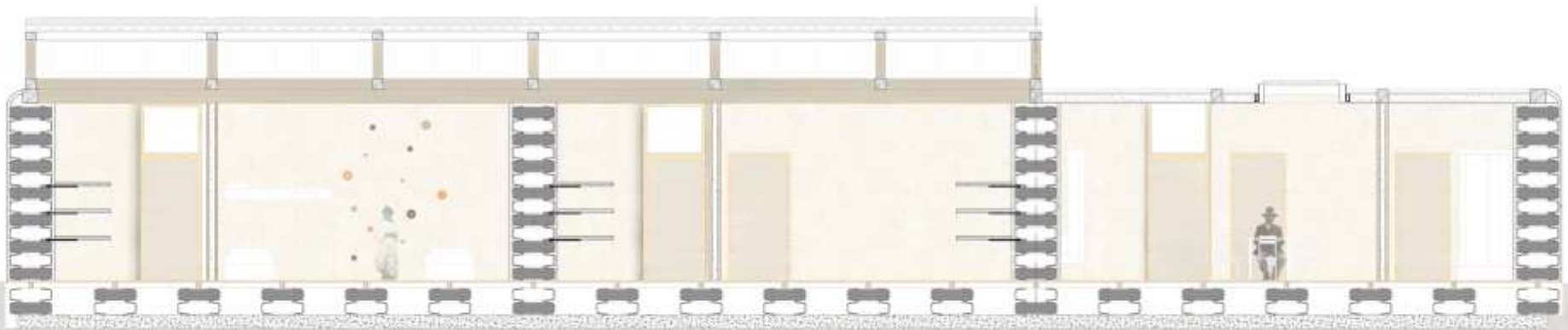
MIŠTÓ HOUSING

ECOWEEK
Milan 2011



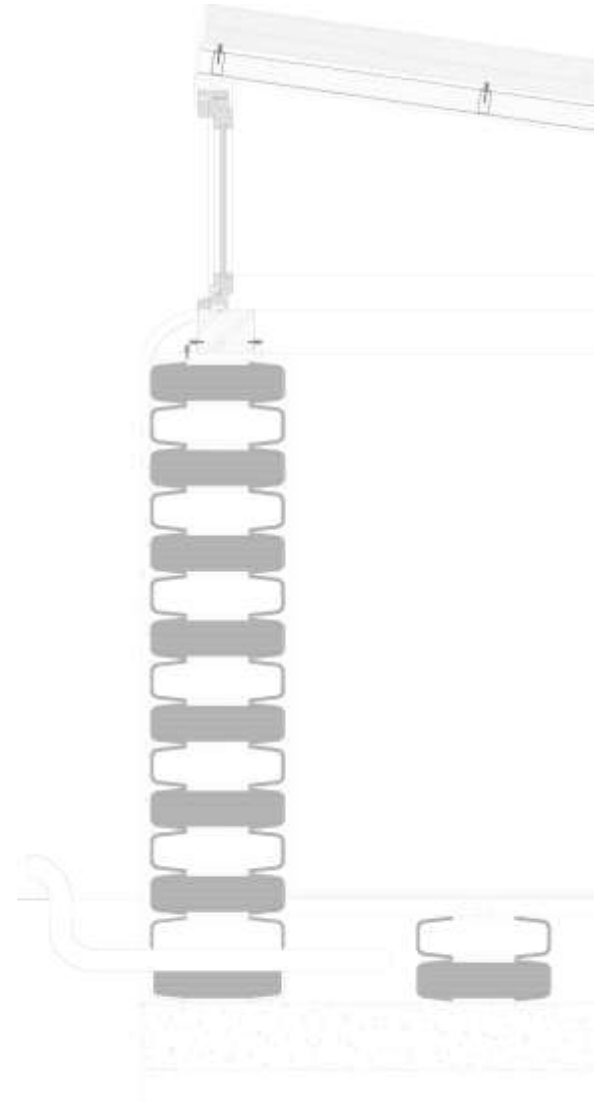
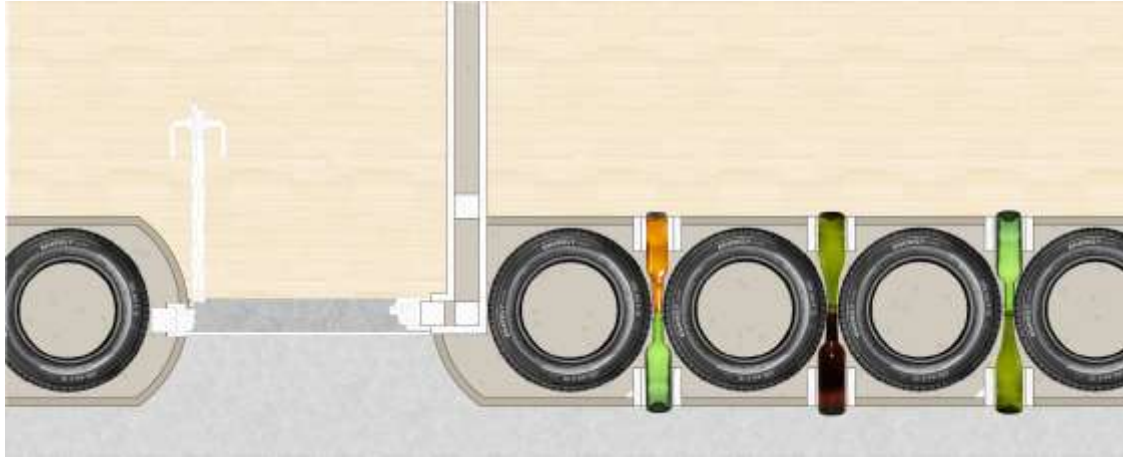
MIŠTÓ HOUSING

ECOWEEK
Milan 2011



MIŠTÓ HOUSING

ECOWEEK
Milan 2011

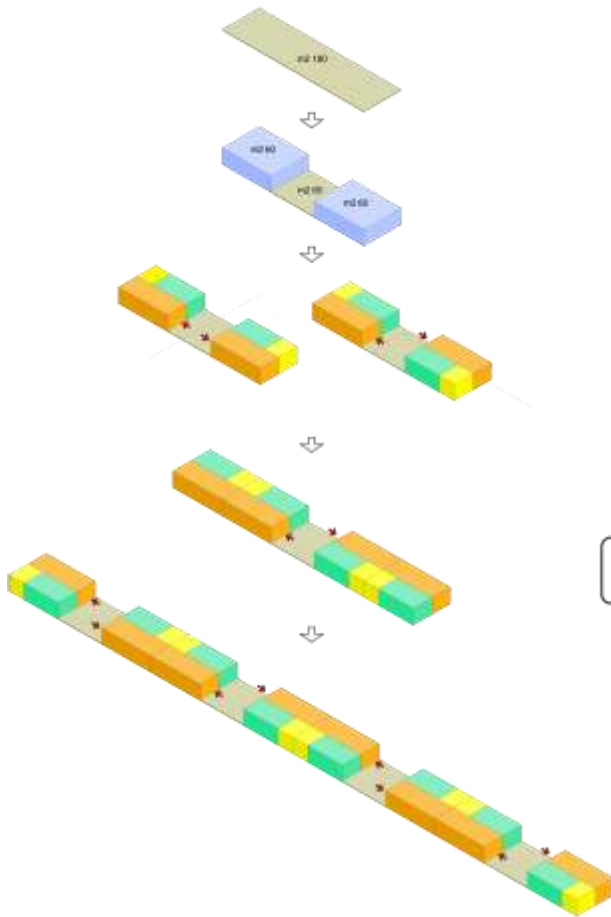


MIŠTÓ HOUSING

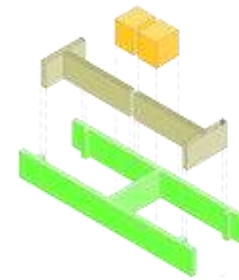
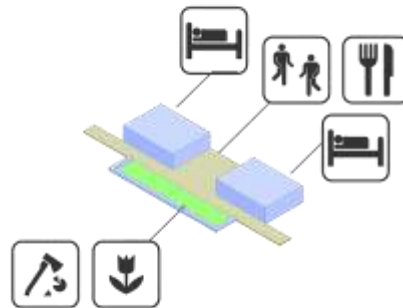
ECOWEEK
Milan 2011

CONCEPT

MODULARITY

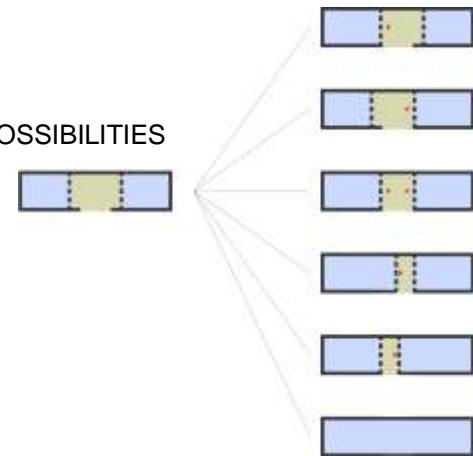


CONVIVIALITY



FLEXIBILITY

FUTURE POSSIBILITIES

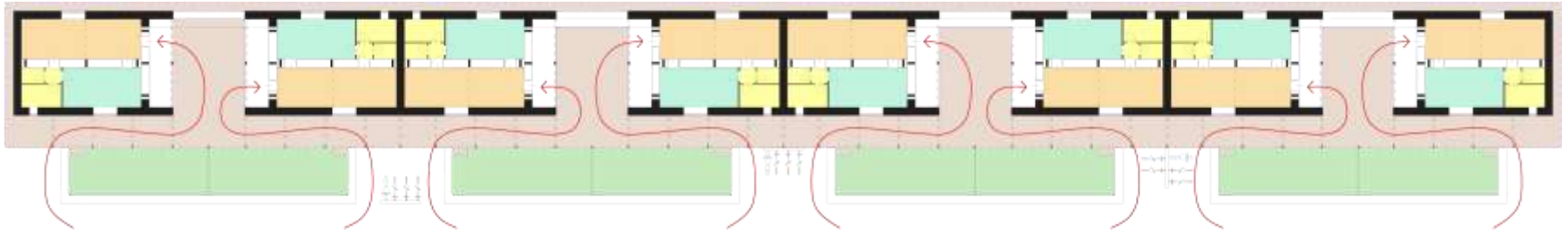


MIŠTÓ HOUSING

ECOWEEK
Milan 2011

UNITS CHAIN

COMMUNITY LIFE



SELF PLANTING



SHADOWED PATHWAY



MIŠTÓ HOUSING

ECOWEEK
Milan 2011

BASIC UNIT

FURNISHED WALL

PATIO

PATHWAY

GARDEN

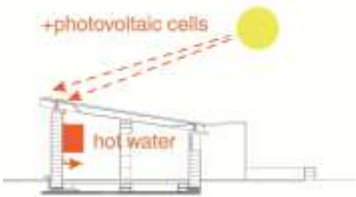


MIŠTÓ

HOUSING

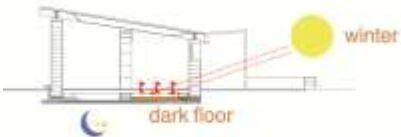
ECOWEEK
Milan 2011

BIOCLIMATIC

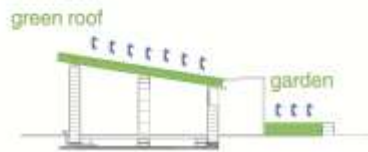
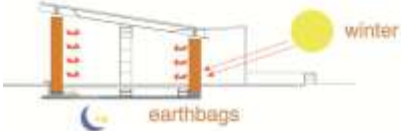


EARTH

floor thermal mass $\Delta t^{\circ}\text{-min}$

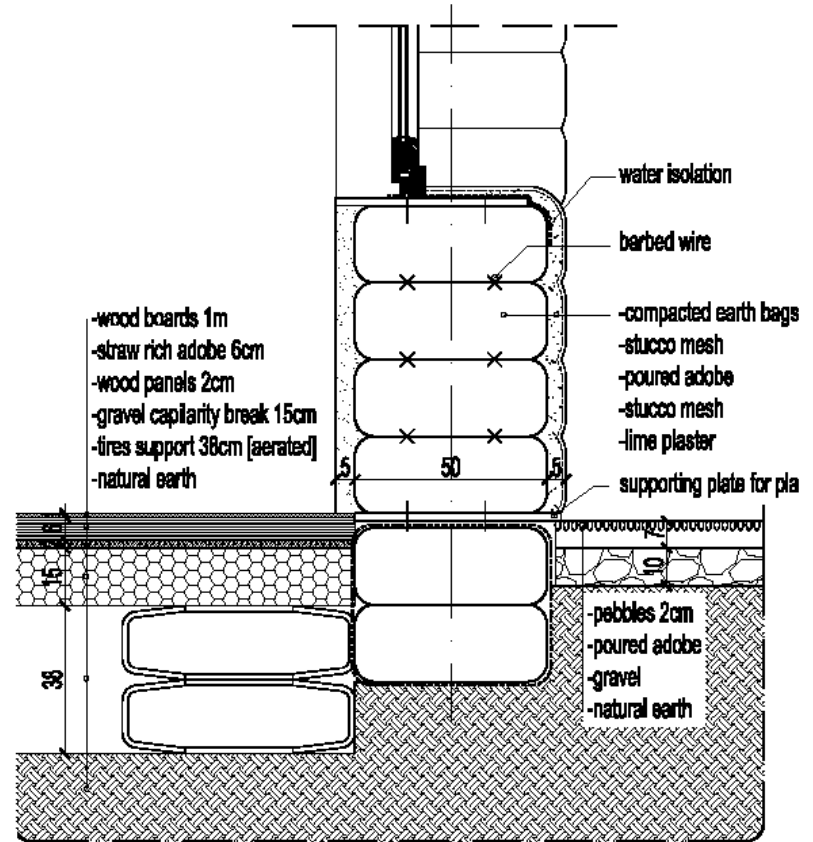


wall thermal mass $\Delta t^{\circ}\text{-min}$



WATER

+rain water collection



EARTHBAGS



MIŠTÓ HOUSING

ECOWEEK
Milan 2011

THANK YOU

Anna Andreotti | Laura Codecasa | Stefano Colombo | Andrea Amendola |
Cristina Ferioli | Francesca Vigotti | Francesca Jorio | Veronica Raileanu | Anna Siviero

