

# W3 - Improvement of the International Lutheran Student Centre

Team leaders: Oliver Schneider, Maria Tsemani, Olga Koumadito

Team members: Isabela Meiwa, Yagmur Kapkan, Berk Ozata, Bengisu Uygur



## BASEMENT LEVEL

**CHURCH:** Automatic panels and curtains are designed for the church to have an improvement of acoustic and to have a storage behind the panels to put some goods of the church.

**BREAKFAST ROOM:** Clubroom is converted into a breakfast room to get together in the same floor all the residents, as a client's request. All activity rooms and communal areas take place in the basement level to develop students' integration.

**FOYER:** The foyer put together with the courtyard creates a big communal area where residents can meet. It is designed for activities such as table tennis, yoga classes, living and TV room. The corridor that existed was removed and the open space provides sunlight to the entire area.



BASEMENT LEVEL  
ESC. 1:200

## STUDY ROOM AND COUNCIL ROOM:

The existing narrow corridors are destroyed. It provides more spaces for the rooms. We also choose glass walls for sound insulation that also give people open space feelings.



Table tennis



Recycled wood chair



Table with recycled skateboards

## CONFERENCE ROOM:

We convert the breakfast room into a conference room. It is a pleasant space with daylight where it is possible to see the courtyard. We designed automatic curtains to block the light in case there is need to use a projector in meetings.



Skateboard bench



Cardboard chair

**BLUE TUBE:** We design a glass corridor which links the two residential buildings. The glass guarantees that the corridor receives daylight and also creates a cleaner design.

**RECEPTION:** The reception is replaced based on the main entrance. With its new place students and guests will be welcomed easily.

**WC:** The WC is added to the ground floor for the offices and the conference attendants.

## WOODEN TABLE



**MAIN FOYER:** We design a main foyer in the entrance hall between the conference room and the reception which creates a transaction area for the guests.

## WAITING ROOM



International Lutheran Student Centre

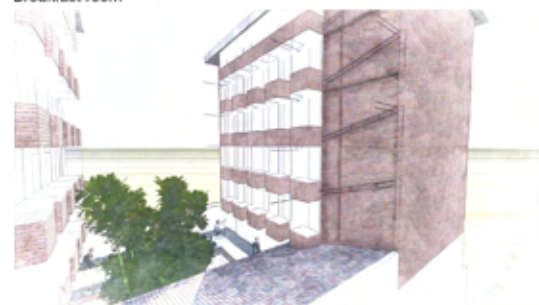
The International Lutheran Student Centre is a modern home for international students in central London. The Centre provides good facilities and comfortable, moderately priced accommodation for 80 residents. It is intended for full-time postgraduate students, but accommodation for non-students is available during the summer and occasionally at other times. The residents come from every region of the world and represent many faiths. The Centre's staff make every effort to ensure that the community is welcoming, supportive and sensitive to the cultures of the residents. There is a programme of social activities within the Centre and residents can participate in organised visits and entertainment in London and beyond. A chaplain is on the staff to provide opportunities for discussion and regular worship in the Centre's chapel. Although the basis and orientation of the Centre are Christian and the tradition is Lutheran, the beliefs of those who profess other religions are fully respected.



View of the Church



Breakfast room



External view of the building and courtyard



Courtyard



Conference room



GROUND LEVEL  
ESC. 1:200

**GROUND FLOOR:** The Ground floor covers basically the administration area, a conference room and the reception. A new design guarantees that all rooms have daylight very effectively and makes paths easy to reach spaces.

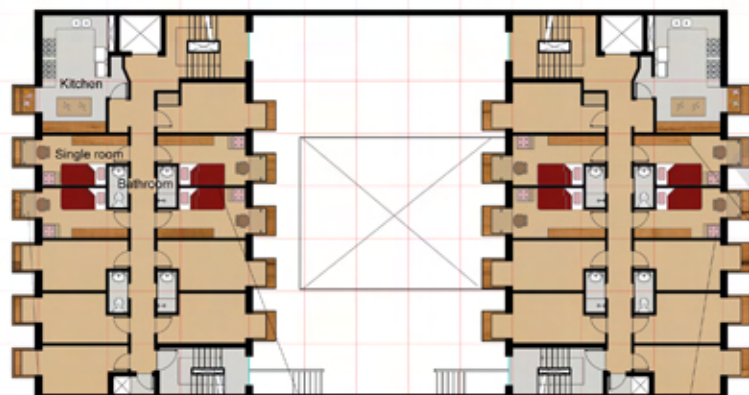
**WARDEN'S OFFICE:** Warden's office is changed to a more silence and pleasant place which has daylight from terrace and is next to the council's office and reception.

**MEETING ROOM:** Meeting room is removed from the first floor to the ground floor to have a connection with the main administration area and the entrance.

**COUNCIL OFFICE:** We removed the council office from the 1st floor to the ground floor next to the reception and we also rearranged the other offices and the reception. The administration can have one common work space.

## UPPER FLOORS

The refurbishments are basically on the furniture design of the bedrooms, the lighting system changes and the division of three double bedrooms into six single bedrooms as the client requested. We choose a contemporary and minimalism design for the bedrooms and change the old carpet into a new and clearer one.



THIRD FLOOR  
ESC. 1:200



View of the single bedroom



Recycled wood desk



Cardboard shelves



Seat/bookshelf recycled wood



Recycled wood wardrobe

## PARTNERS



The Bartlett  
Faculty of the Built Environment



## MEDIA PATRONS



SPECIAL PARTNER & SPONSOR OF THE PAPER WORKSHOP: **ADA Daily Mail**