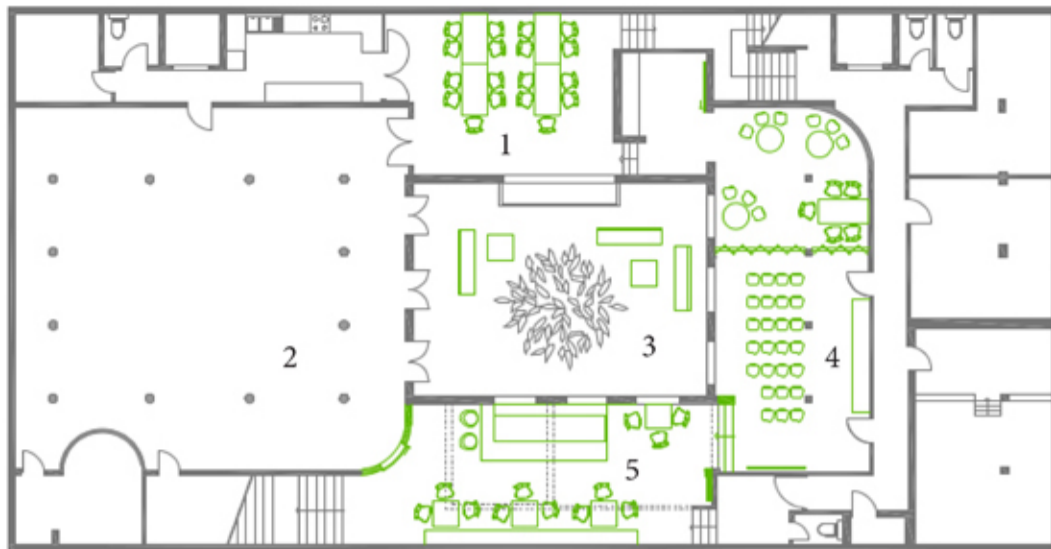


"The International Lutheran Student Centre is awaiting for the restoration and building works to start next year. Therefore we propose the following changes which could potentially bring a large positive impact for the esthetics of the building, as well as its circulation and efficiency."

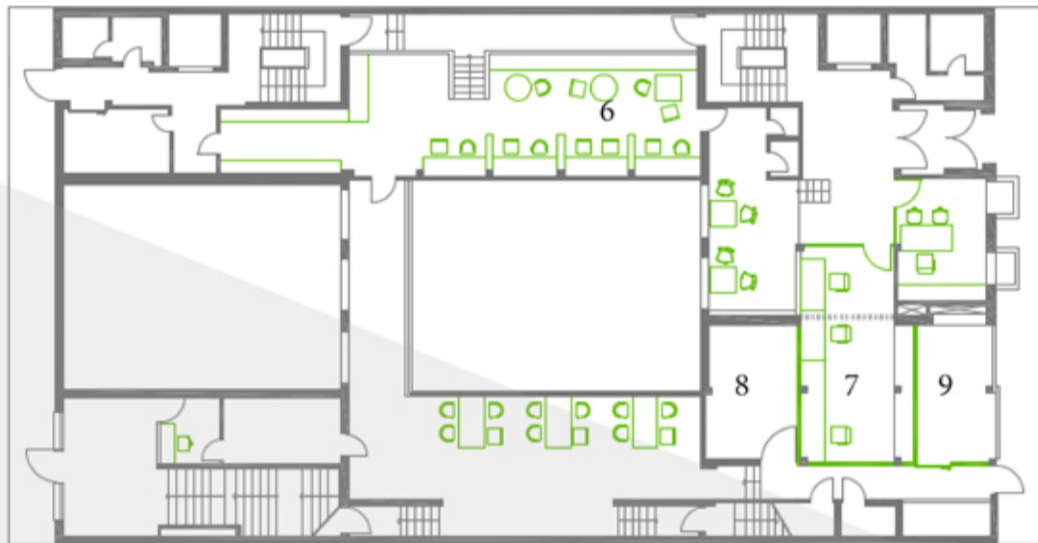
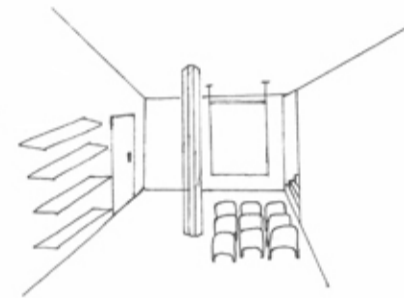
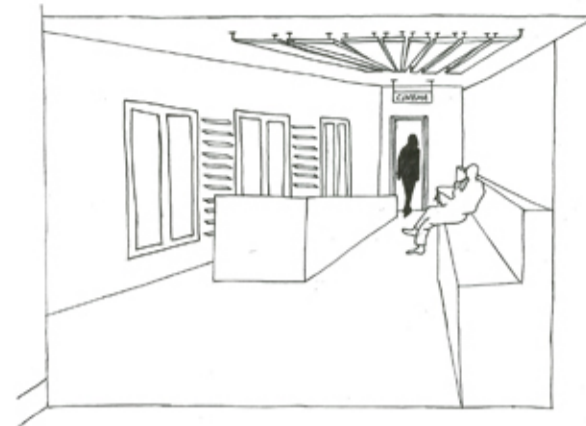


1. Breakfast room 2. Church 3. Courtyard 4. Cinema Room 5. Bar/Cafe

Basement

To generate potential income for the ILSC we are proposing to open up some rooms on the basement to the public, by opening up the existing study rooms to create an open floor plan. The relocation of the breakfast room onto the basement will provide more efficient use of the kitchen downstairs.

Additionally, the existing TV and table tennis rooms will be transformed into one multi-functional space with a big cinema screen on one of the walls. In the church, in order to create a more vibrant space, we propose to incorporate colour panels into the windows and to re-paint the whole space uniformly white – it would appear much brighter.



6. Studying studio 7. Reception and offices 8. Storage 9. Waste bins storage

Ground floor

The existing space is inefficient therefore we propose to relocate the breakfast zone onto the basement, this would allow to remove the kitchen and to create a large multifunctional communal space which can be easily accessed from all wings of the building.

To create a modern spacious reception and offices on the ground floor we propose to extend the office space via pulling down one of the walls in the reception. It will also provide the relocation of the Council Manager's office from the back of the building to the front side.



10. Student's bathroom 11. Student's single room

First floor (part)

The corridor which leads to the inhabitants' rooms is dark and uninviting. To solve this problem we propose a brand new lighting system which will improve the sensual experience for the long narrow space. Also by replacing the doors from standard to sliding, made of reflective material,

for the existing bathrooms - will provide better access to the essential facilities. For the disabled people the wardrobes in some of the rooms can be relocated to the side wall, next to the existing bed - to create a larger opening in the space provided by this change, allowing for the wheelchairs to get through.



PARTNERS



MEDIA PATRONS



SPECIAL PARTNER & SPONSOR OF THE PAPER WORKSHOP:

