

Designing a passive solar house of zero emissions.

...principles and tools to integrate the principles of

sustainability and

ecological solutions in architecture and design decisions.

the site _

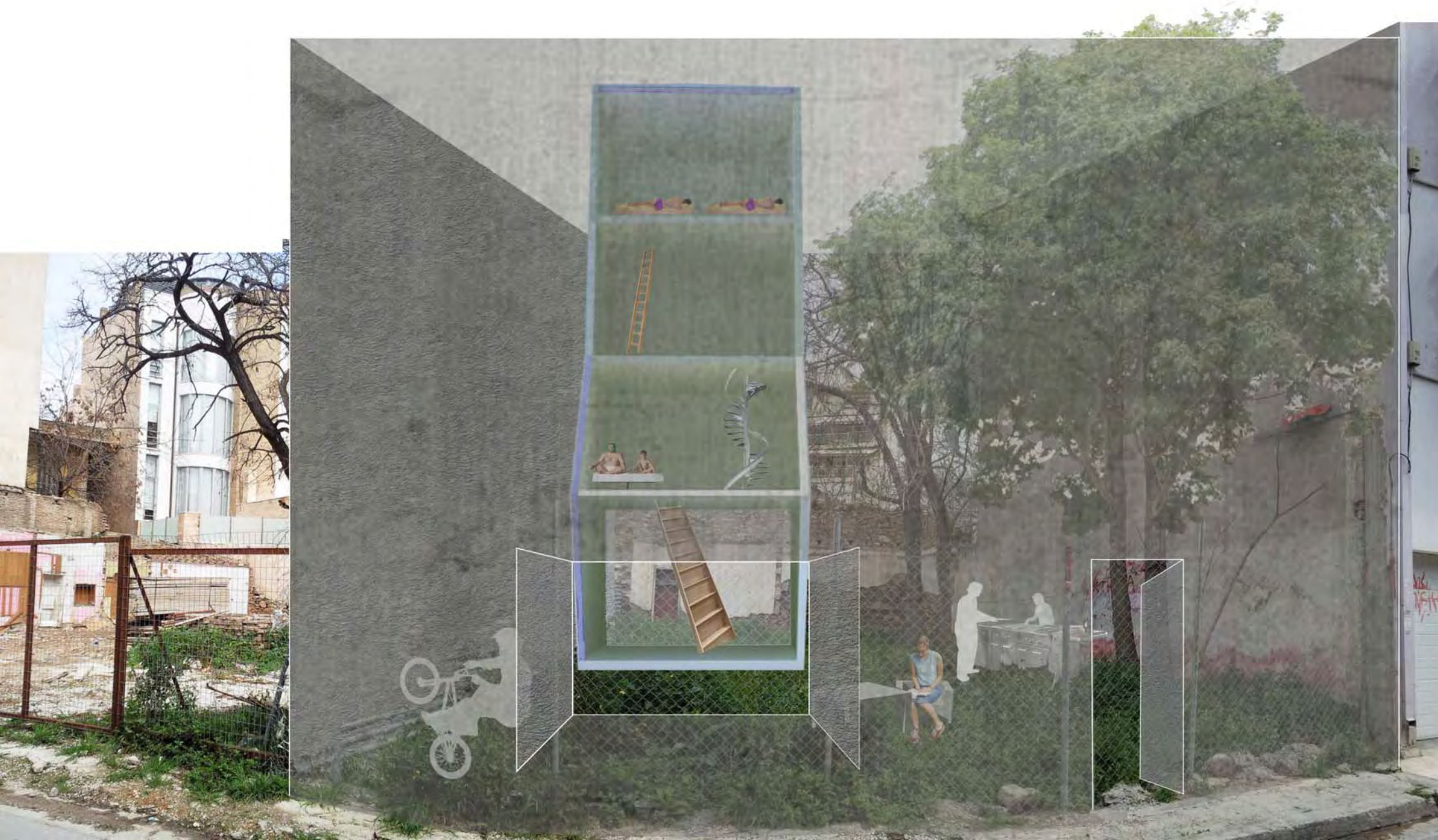


ecological solution:
what about building nothing?



sustainability in architecture

alternative way of living
Build minimum and live outdoors?



sustainability in architecture



Minimising windows on other sides, especially western windows

The



Passive solar building

Orienting the building to face the equator

specific overhangs

Extending the building dimension along the east/west axis

Placement of room-types, internal doors & walls, & equipment in the house.



Adequately-sizing windows to face the midday sun in the winter, and be shaded in the summer.

wind turbin (Zero Energy Building)



shading elements

Using the appropriate amount and type of insulation





Passive solar house of zero emissions