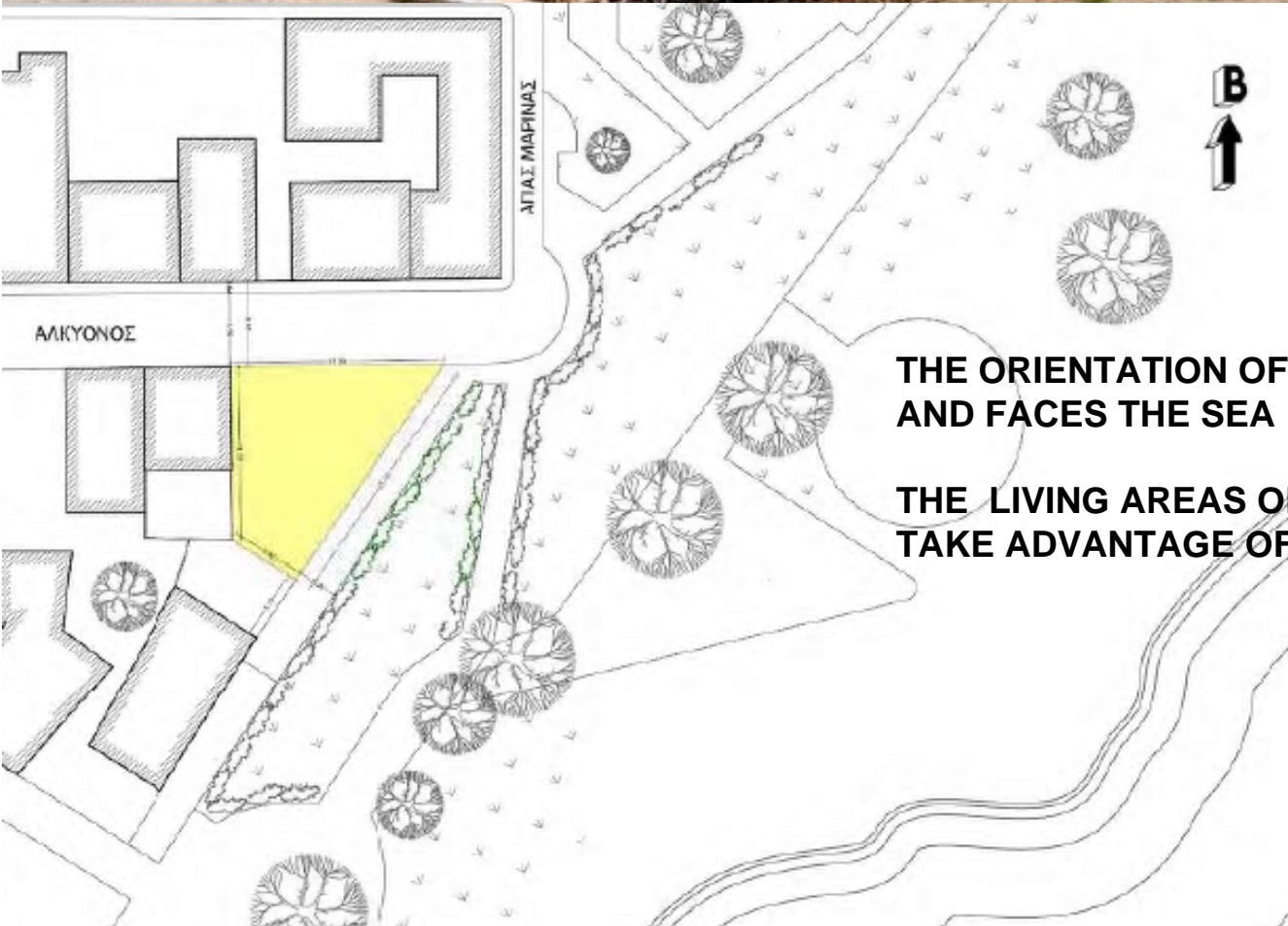


## SUSTAINABILITY ON THE ROCKS



**THE SITE IS LOCATED IN ARTEMIDA SUBURB  
IT IS A SUBURBIAN TOWN IN EAST ATTICA APPROXIMATELY 25 km EAST OF ATHENS**



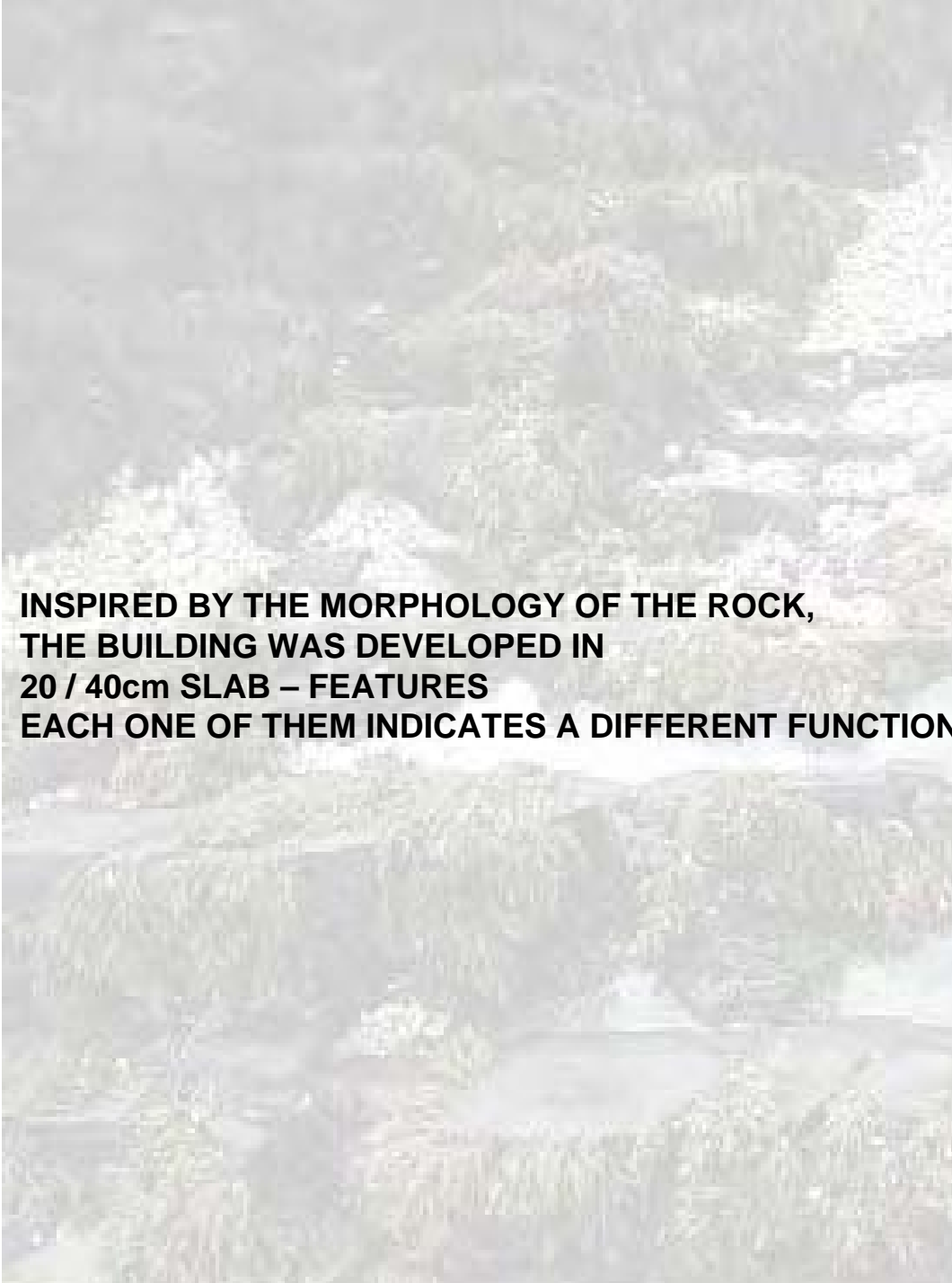
**THE ORIENTATION OF THE SITE IS SOUTH EAST  
AND FACES THE SEA**

**THE LIVING AREAS OF THE PROPOSED BUILDING  
TAKE ADVANTAGE OF THESE POSITIVE FEATURES**

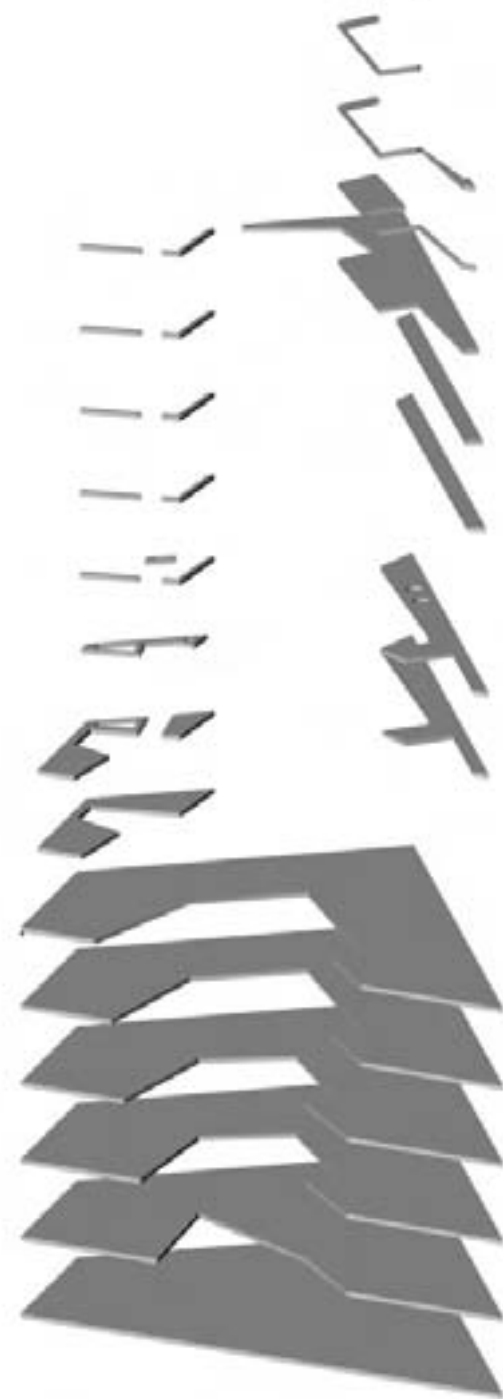
**THE CONCEPT IS BASED ON ROCK CRACKS WHERE**

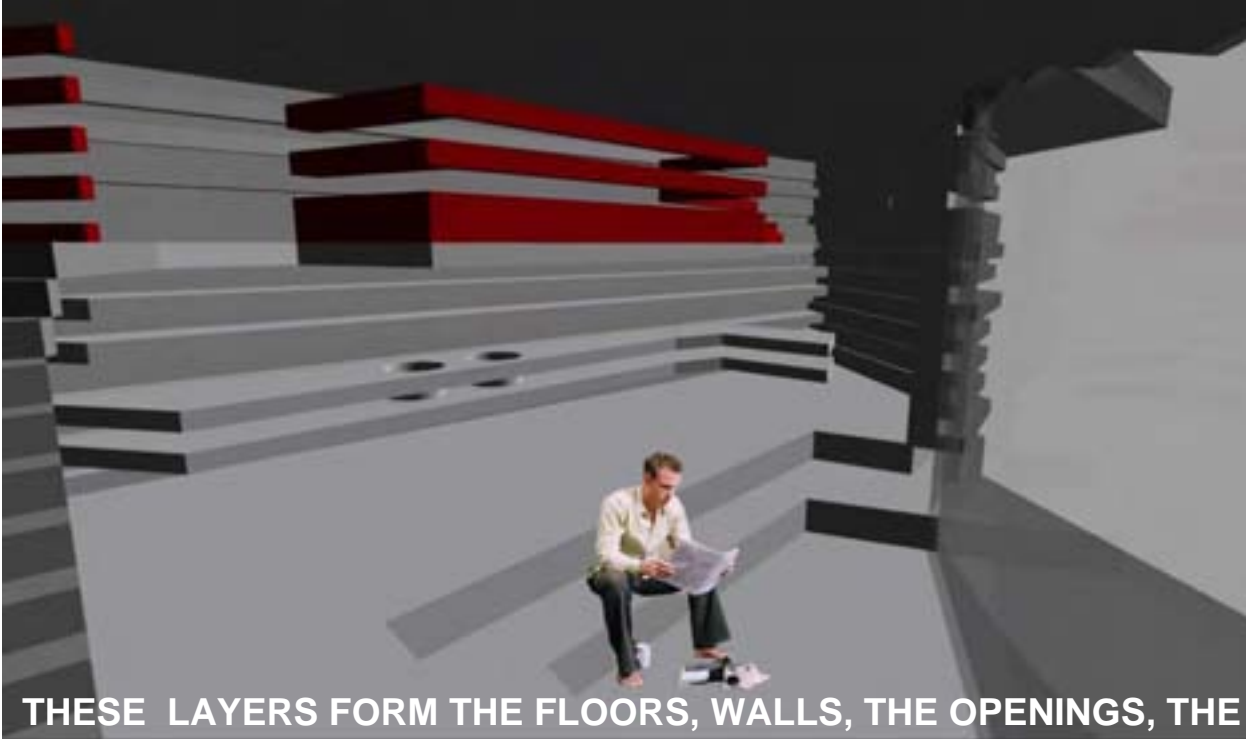
- **WIND, SALT, WATER DEFINES THEIR MORPHOLOGY**
- **VEGETATION EMERGES**
- **WATER PONDS ARE CREATED**
- **SUN WARMS THE SURFACE**





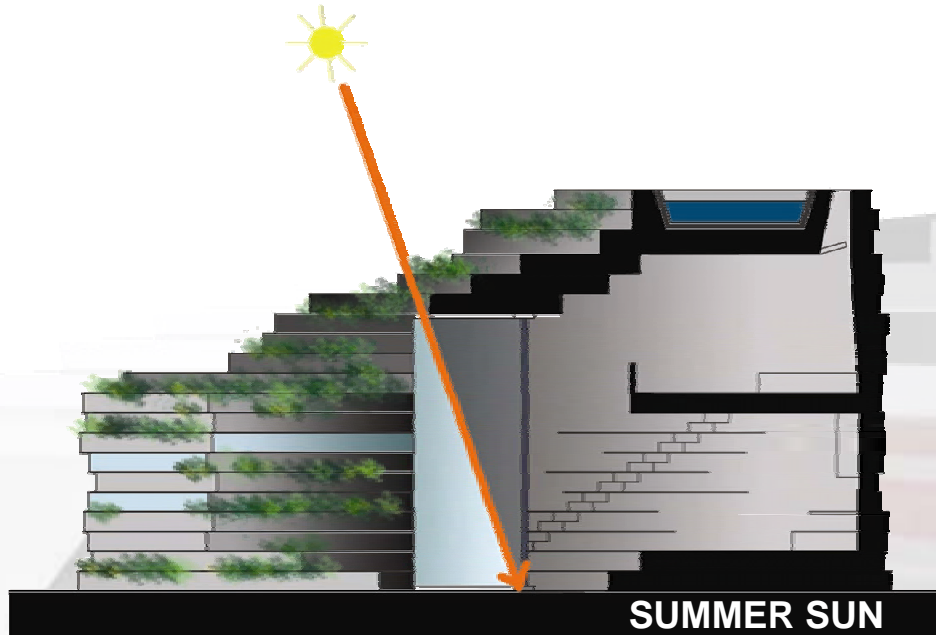
**INSPIRED BY THE MORPHOLOGY OF THE ROCK,  
THE BUILDING WAS DEVELOPED IN  
20 / 40cm SLAB – FEATURES  
EACH ONE OF THEM INDICATES A DIFFERENT FUNCTION.**



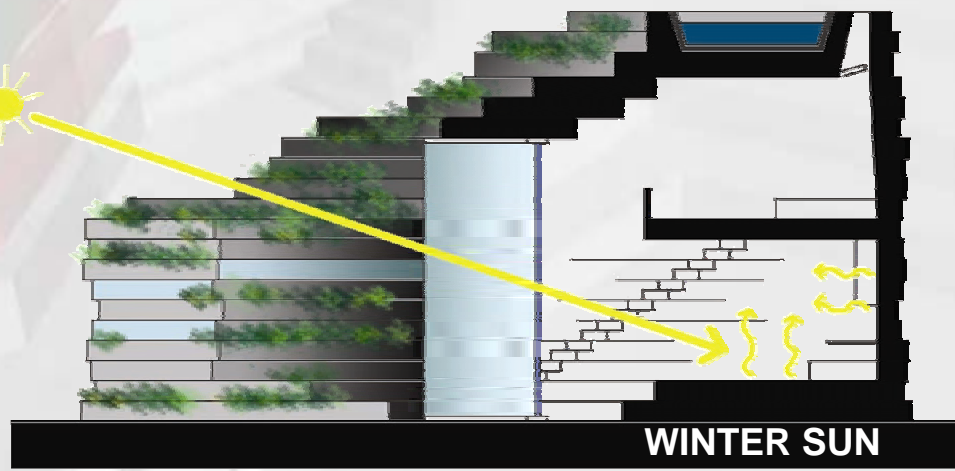


**THESE LAYERS FORM THE FLOORS, WALLS, THE OPENINGS, THE FURNITURE OF THE HOUSE,  
& THE STEPS OF THE STAIRCASE, MERGING THE THRESHOLD BETWEEN INSIDE AND THE OUTSIDE.**

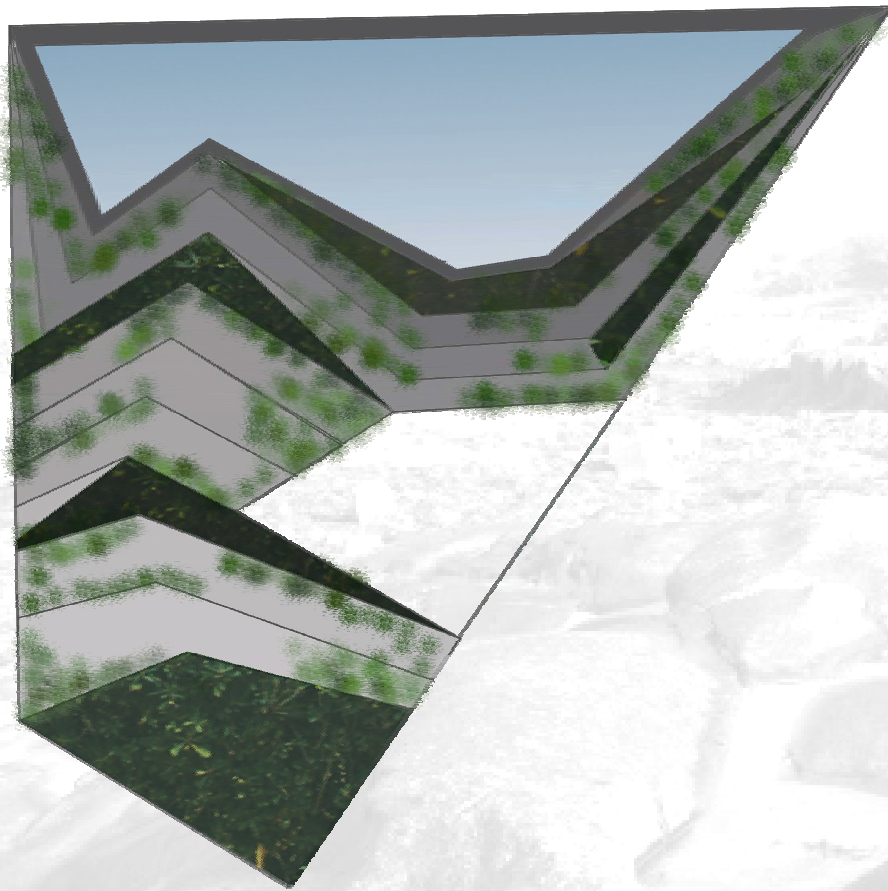




**THE FLOOR SLAB SHADOWS  
THE SOUTH FACING  
LIVING-ROOM KITCHEN**



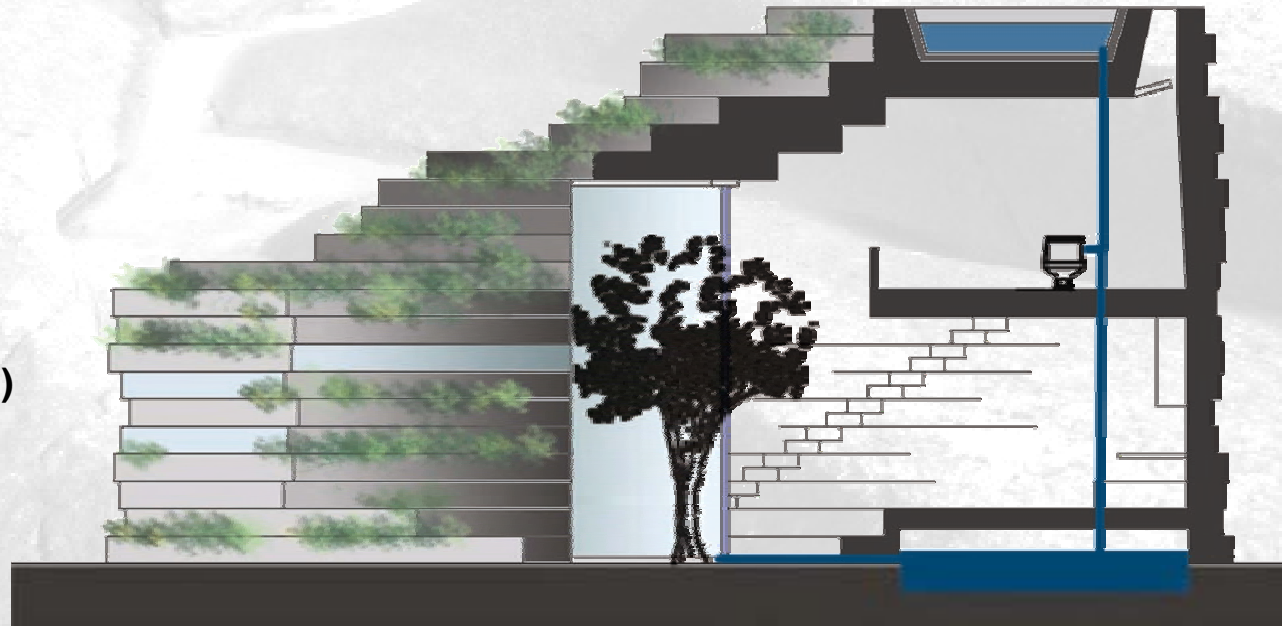
**VEGETATION GROWS  
NATURALLY BETWEEN THE  
SLABS**



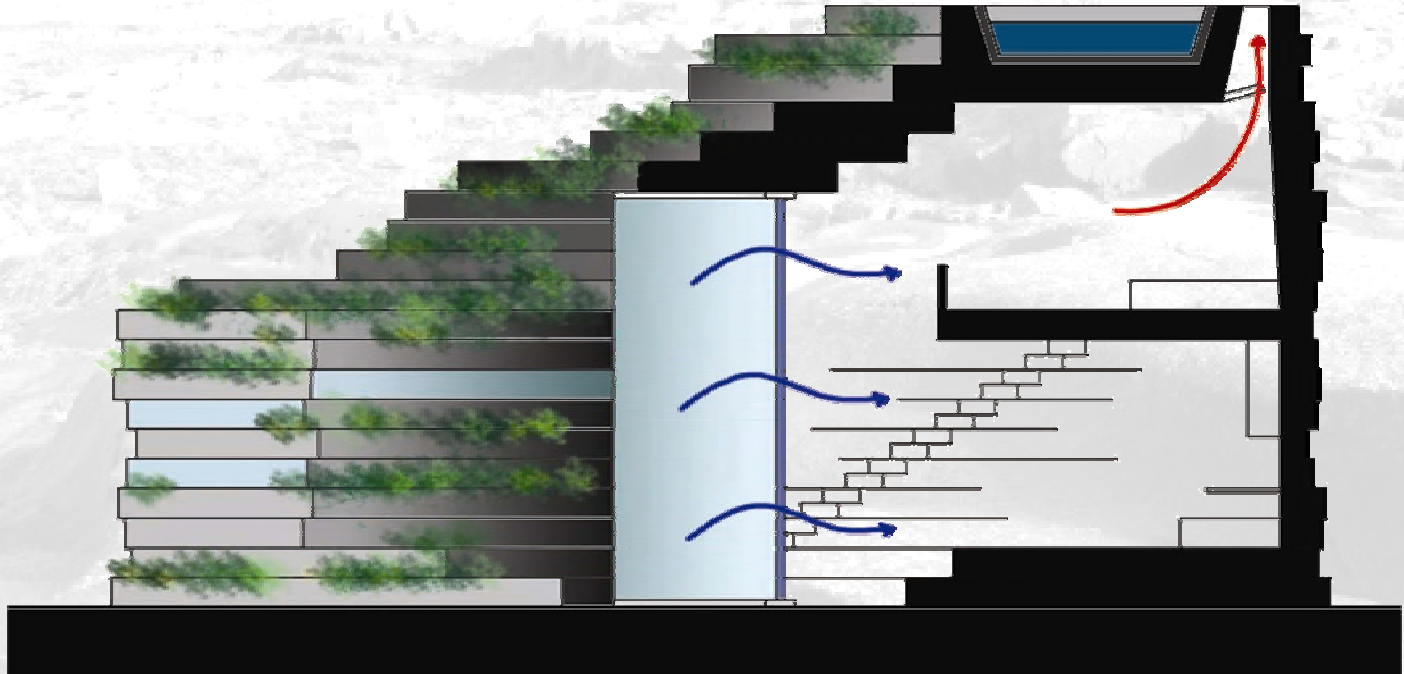
**PLANTED ROOF WITH HAIRGRASS FOR  
MAXIMUM SUN ABSORPTION  
MINIMUM CARE**

**RAINWATER IS COLLECTED  
AND REUSED (IRRIGATION, WC)**

**WATER AS A THERMAL MASS  
ELEMENT**



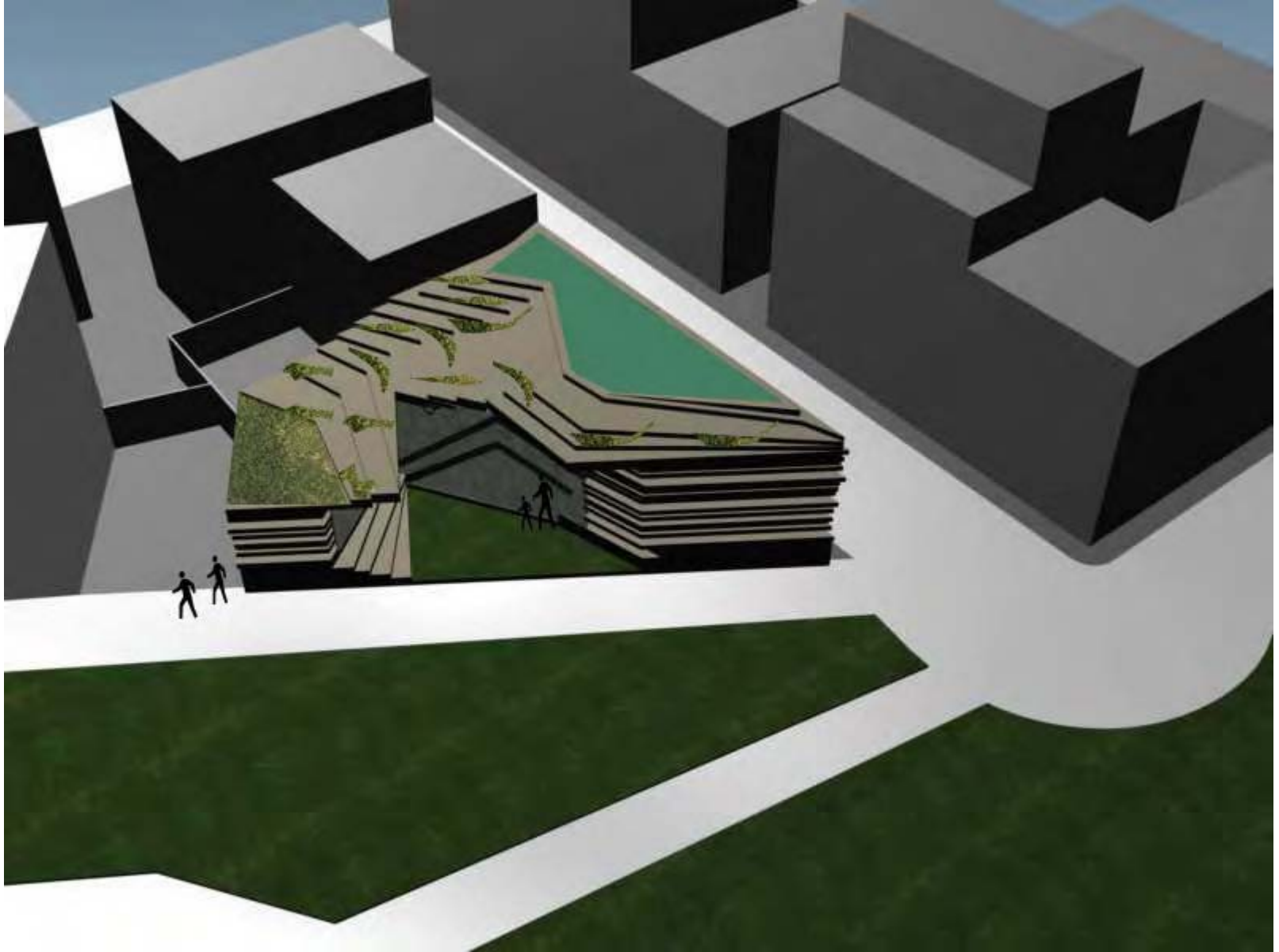
## VENTILATION DURING SUMMER

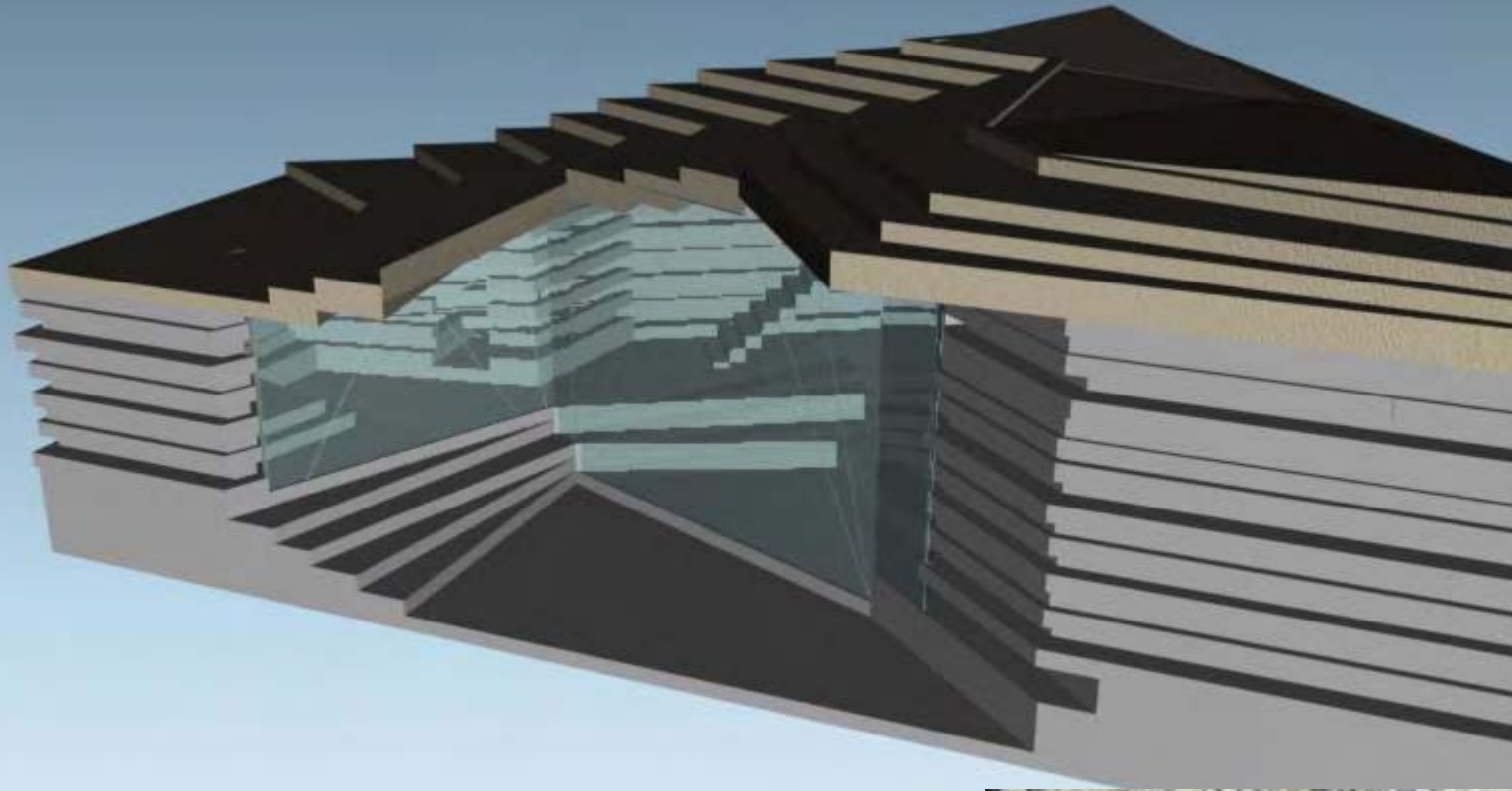


**HIGH OPENING ON THE CEILING – STACK EFFECT**

**THICK CONSTRUCTION ELEMENTS (50cm + plus)**







**NATURE AS A METAPHOR**

