

designahouseproject
of zero
emissions

... by

paan architects &

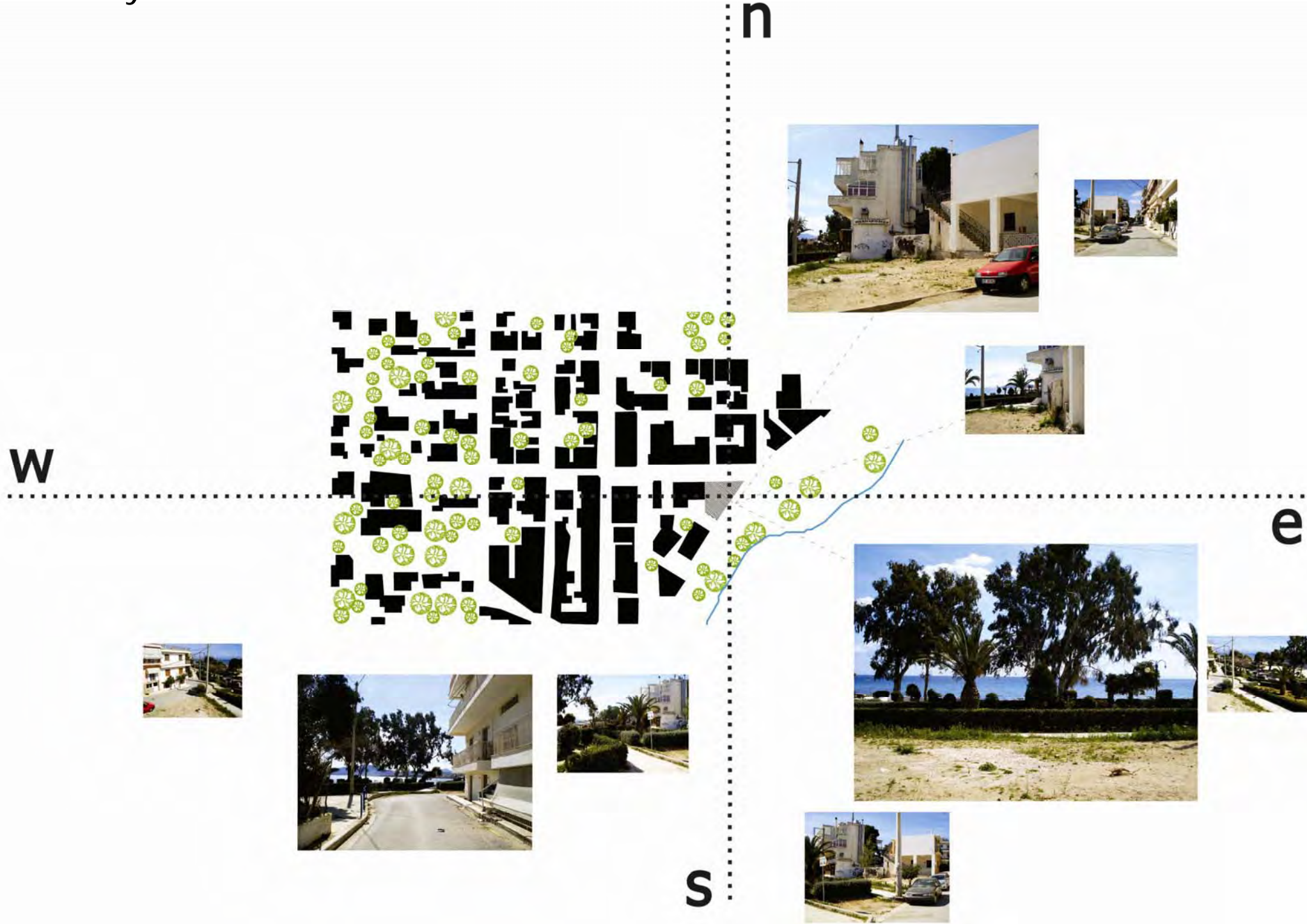
gkotsopoulou georgia

lazu ioulia

politi afrodit

selkou maria

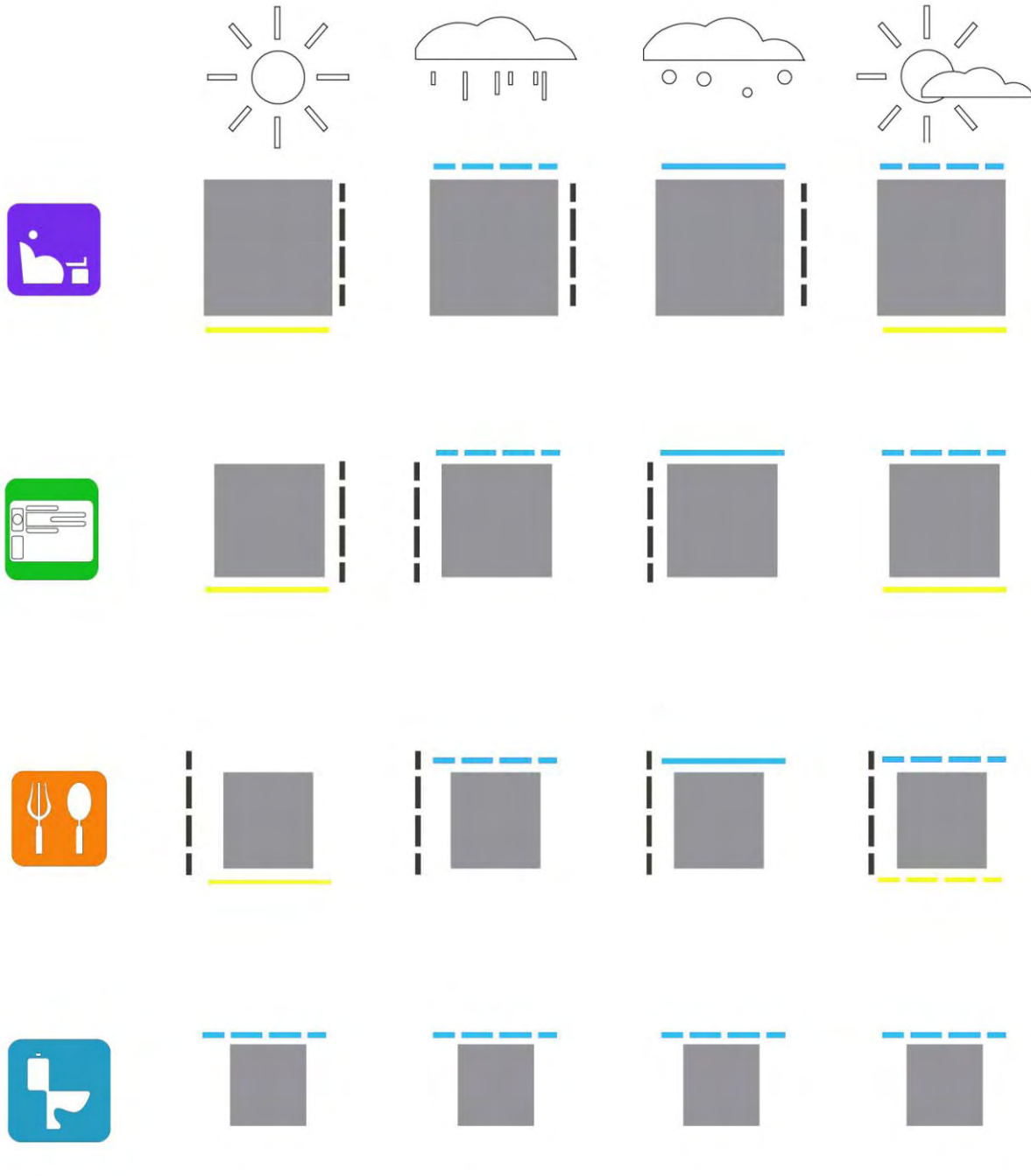
site analysis



bioclimatic elements



the living spaces

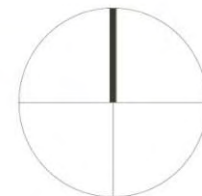


users' profile

spaces

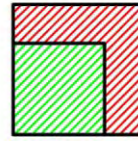
- 1. closed █
- 2. semi-open █
- 3. open █
- 4. sea █

spaces used more often during the:

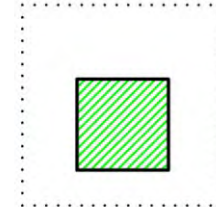
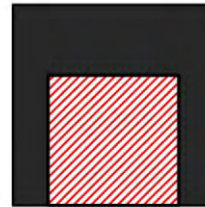


strategy

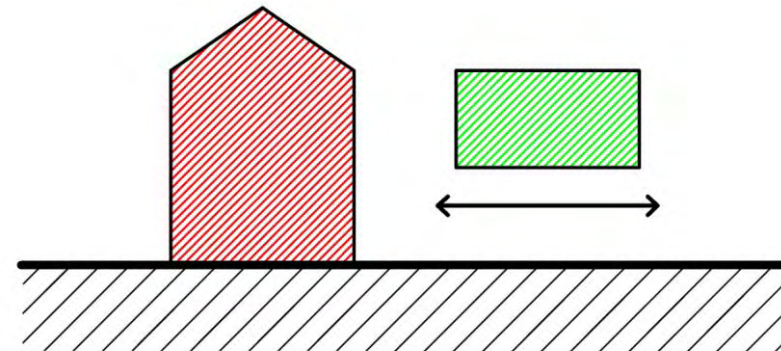
1 minimize surface-basic needs



2 the private house
the public house



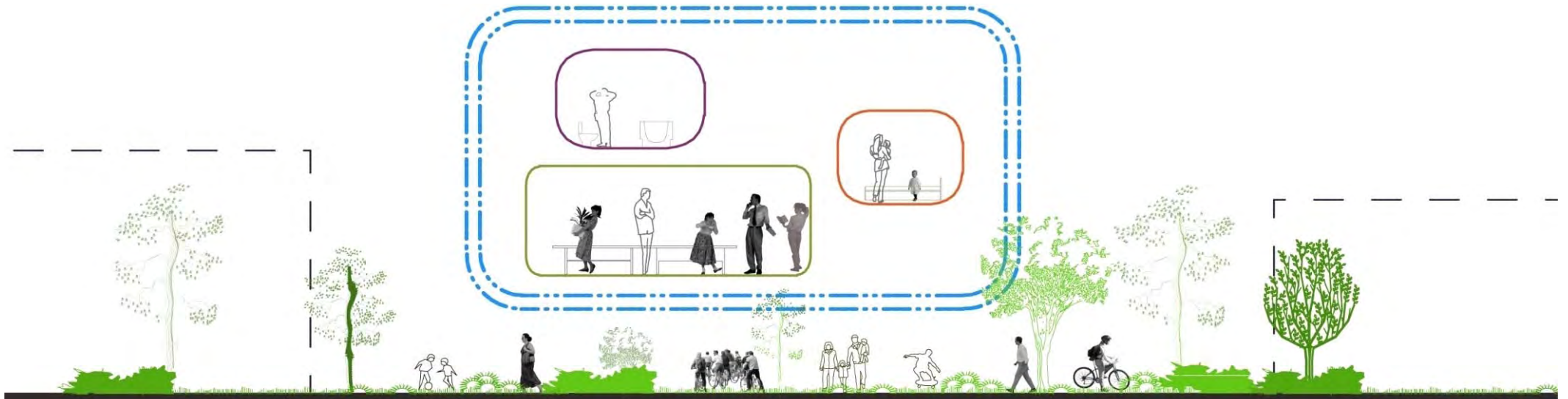
the house on earth
the house leaves space underneath



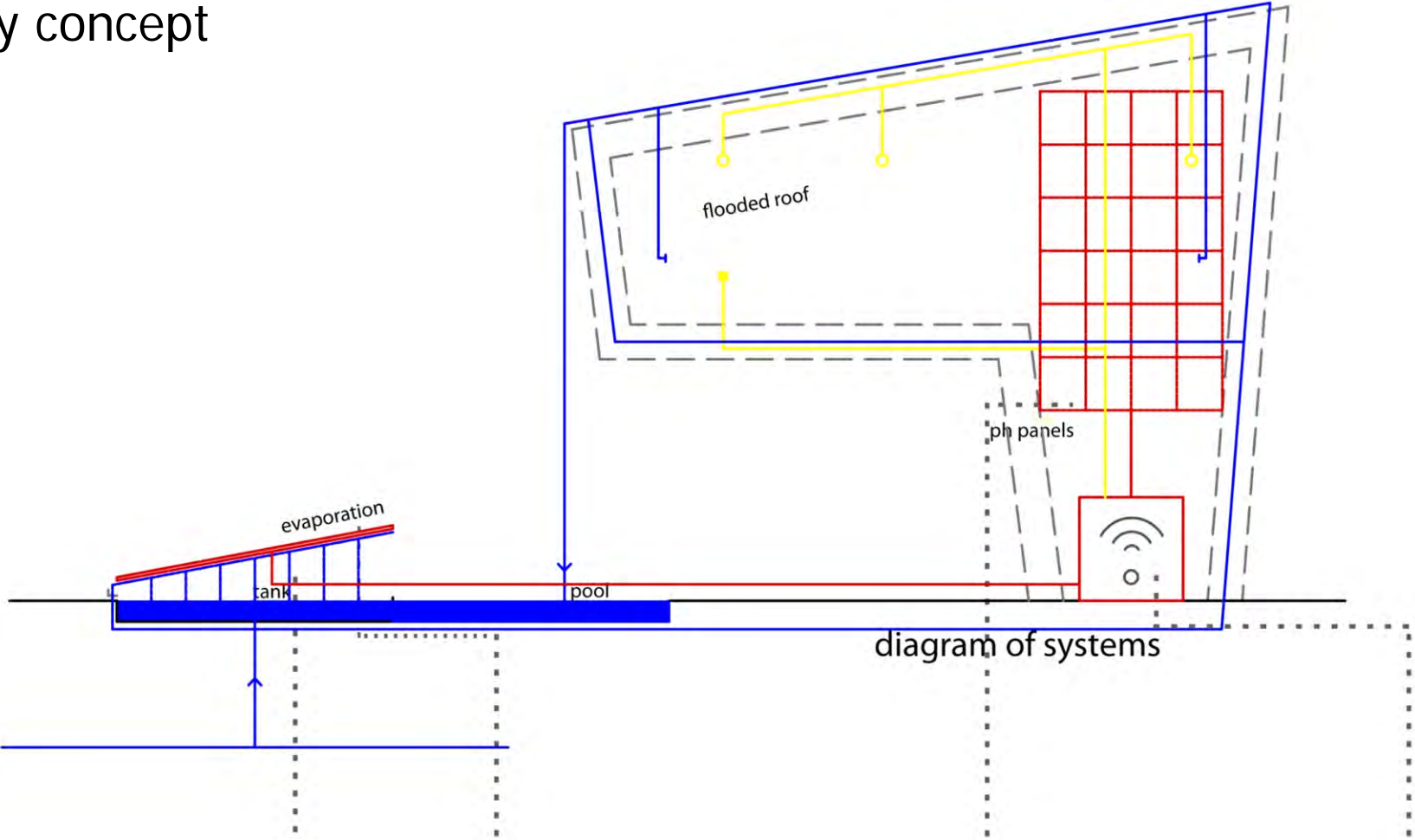
3 water circle



concept intention



sustainability concept

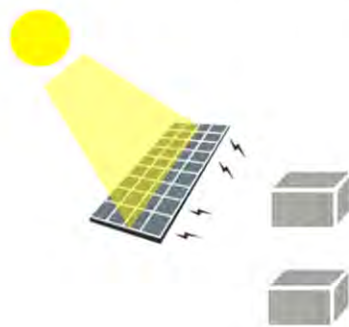
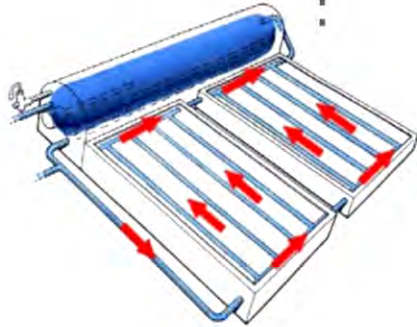
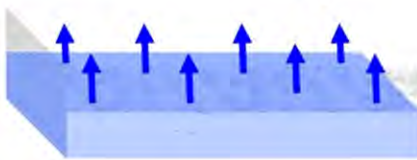


evaporation

solar collector

photovoltaic system

high-pressure device



the idea of water pump

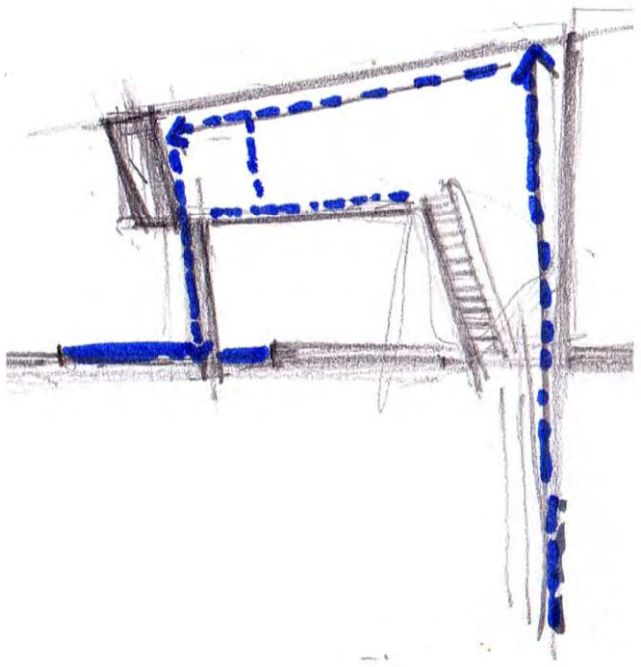
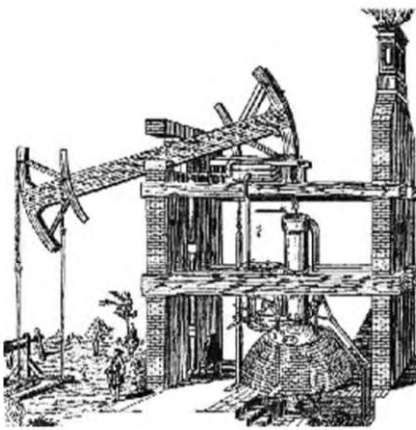
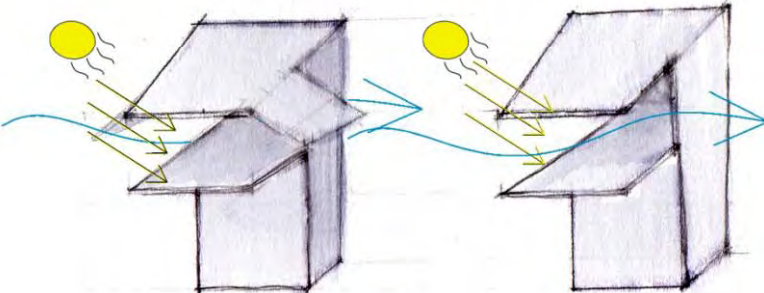
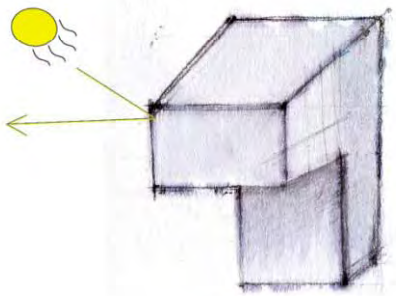
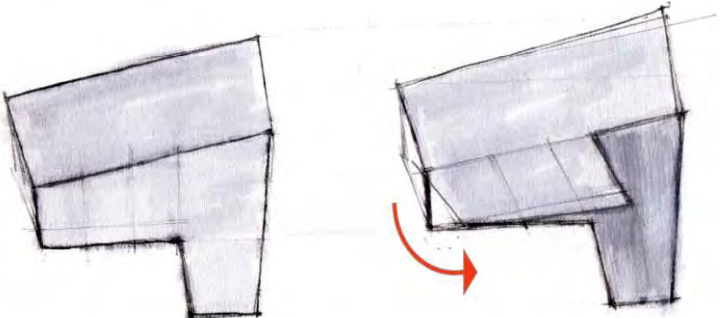
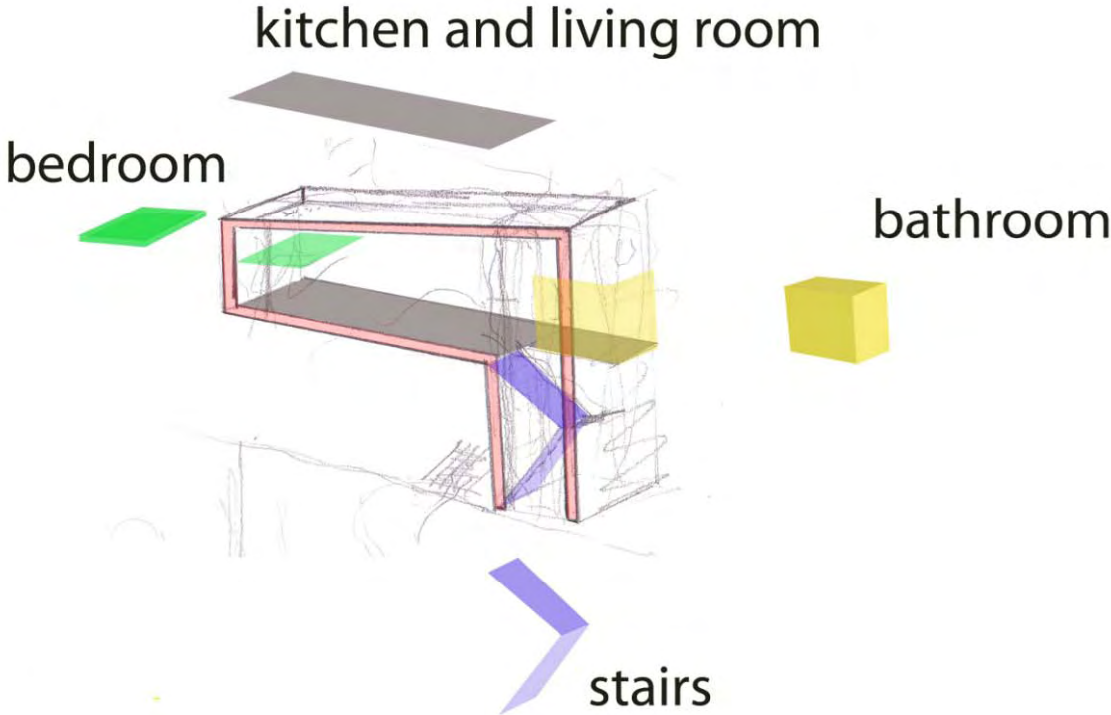


diagram of functions







we would like to thank **paan** architects for the accommodation and their bright ideas during the workshop.

gkotsopoulou georgia

lazuou ioulia

politi afrodit

selkou maria