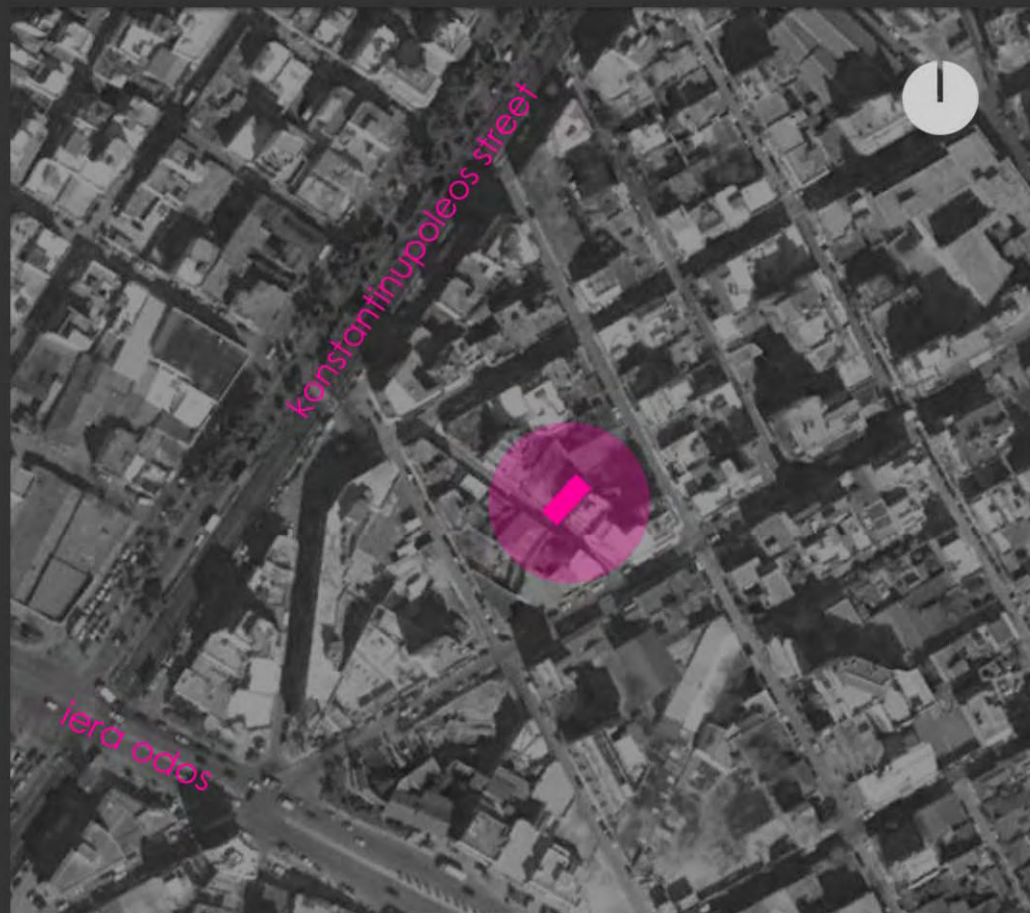


ecoweek 2010



- Residential area
- Densed urban net
- Lack of open spaces
- Lack of green spaces
- Narrow streets
- Maximum building height - 4 levels
- Adjacent plot towards N/W - open space
- Plot orientation S/W - N/E axis



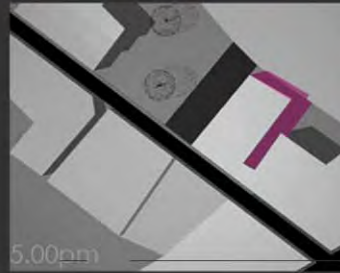
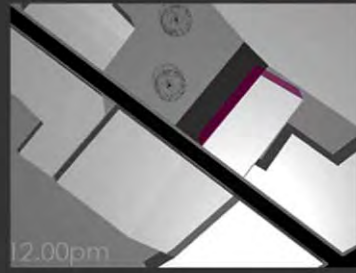
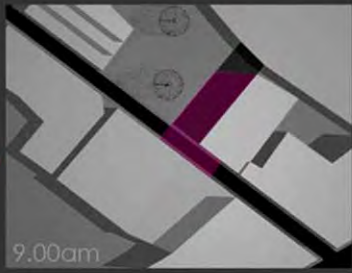
N.E. section Agiou Orous



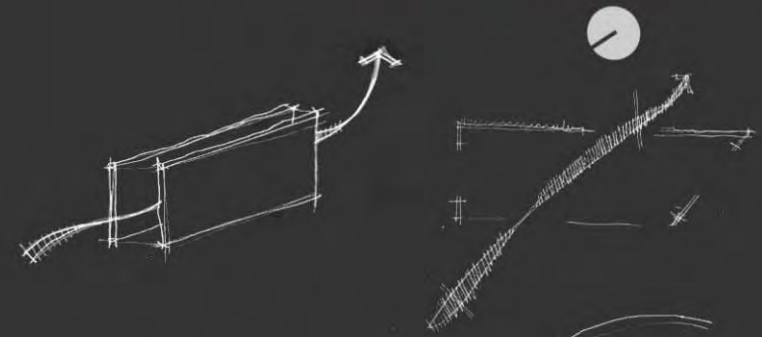
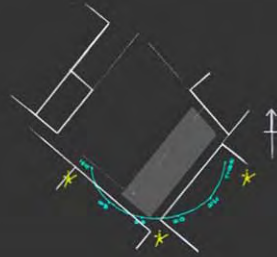
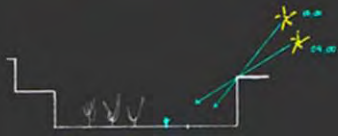
S.W. section Agiou Orous

sunpath diagram

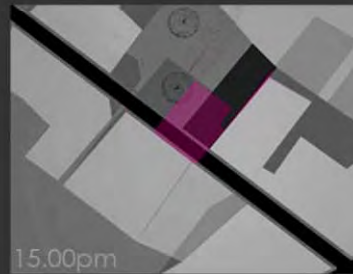
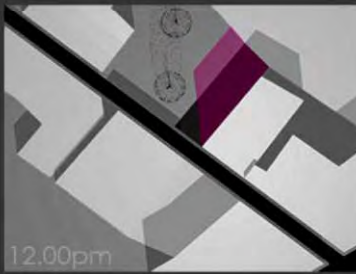
wind diagram



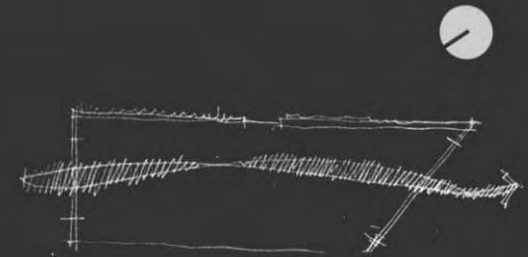
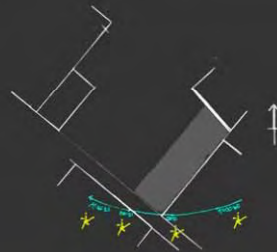
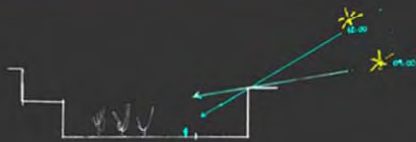
June 21st



April - June



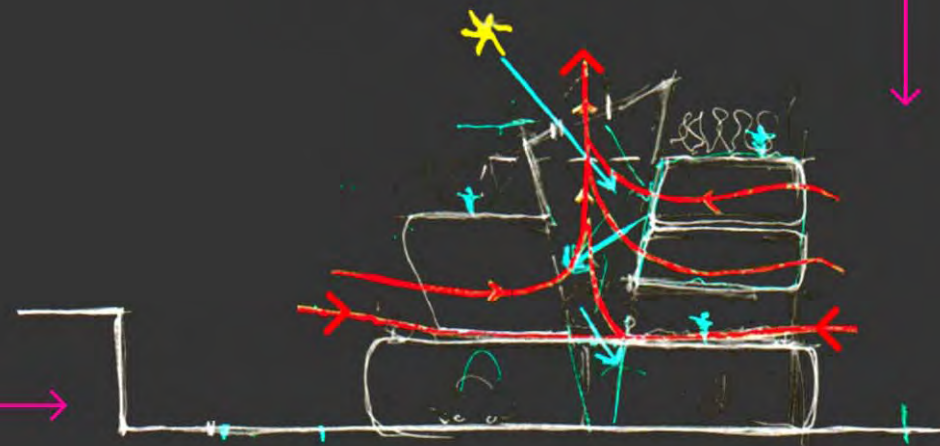
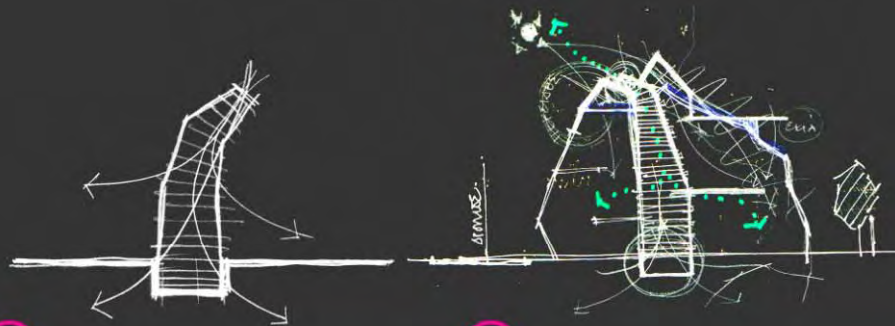
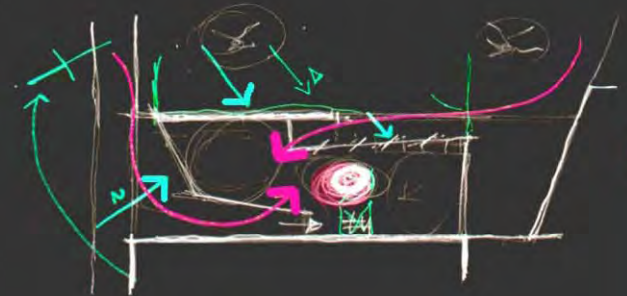
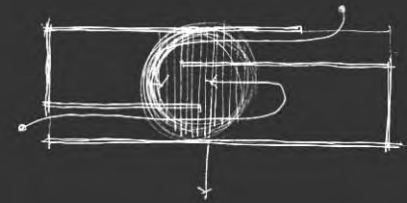
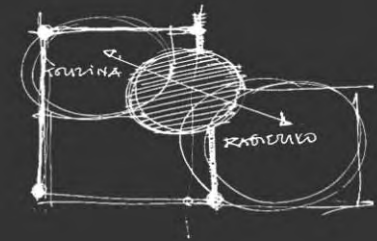
December 21st



July - March



- Exception of building regulations
- Do not open up towards the near open space
- Plane and void masses create a flow renewable system
- Design a patio in the heart of the building for vertical air and sun flow, and spaces with transparent feeling
- A reverse cone enables the desirable air masses to penetrate the building
- Green roofs in the last three levels



1

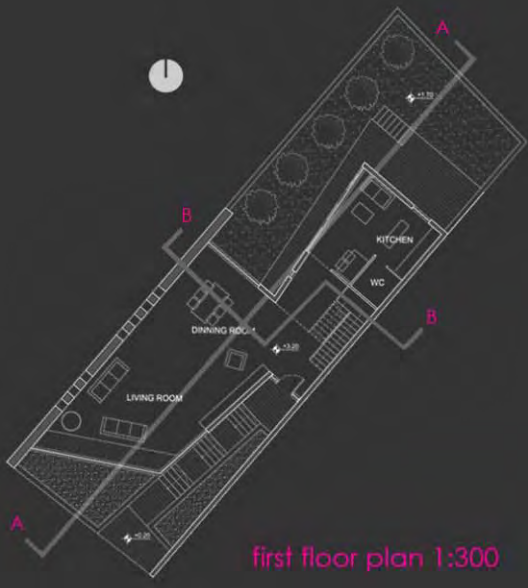
2

3

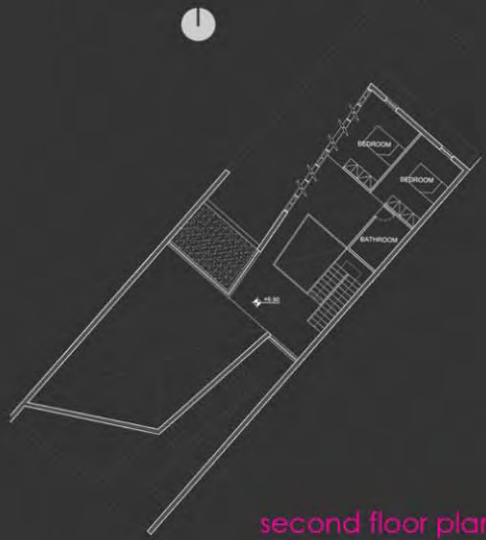
↓



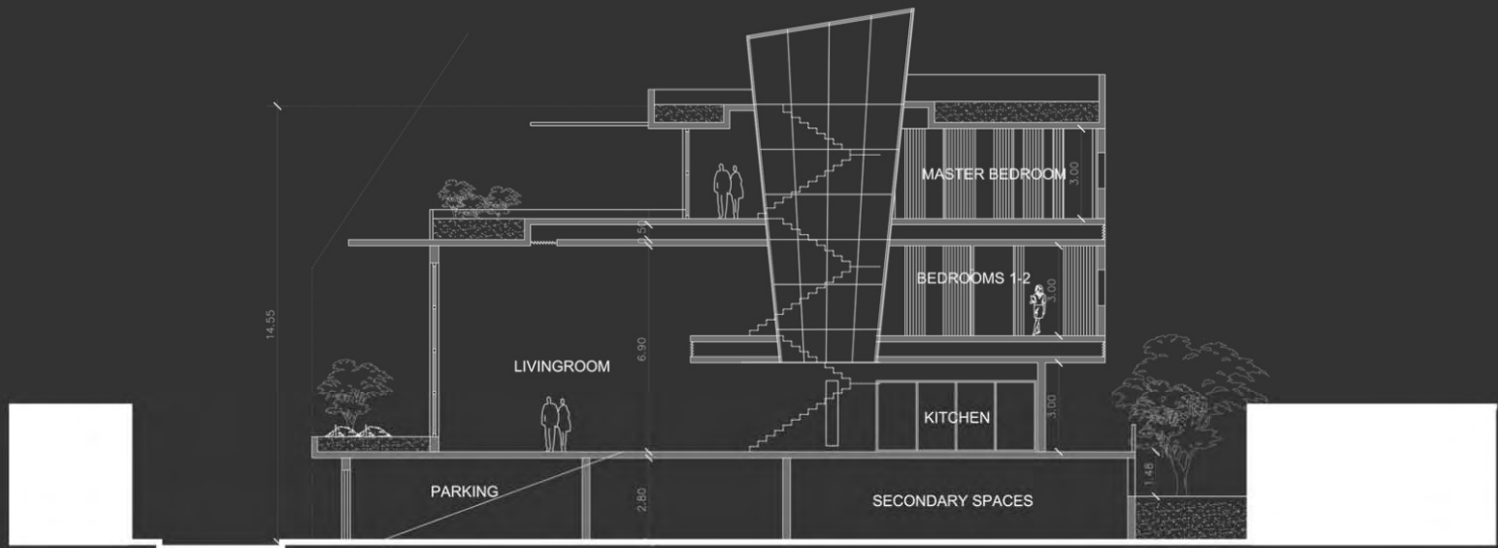
ground floor plan 1:300



first floor plan 1:300



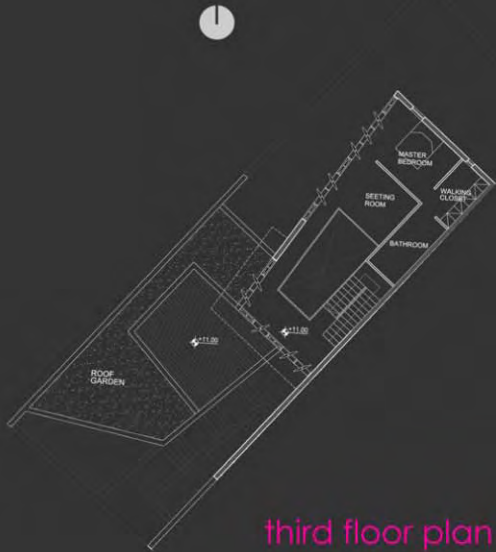
second floor plan 1:300



section AA 1:200

W3

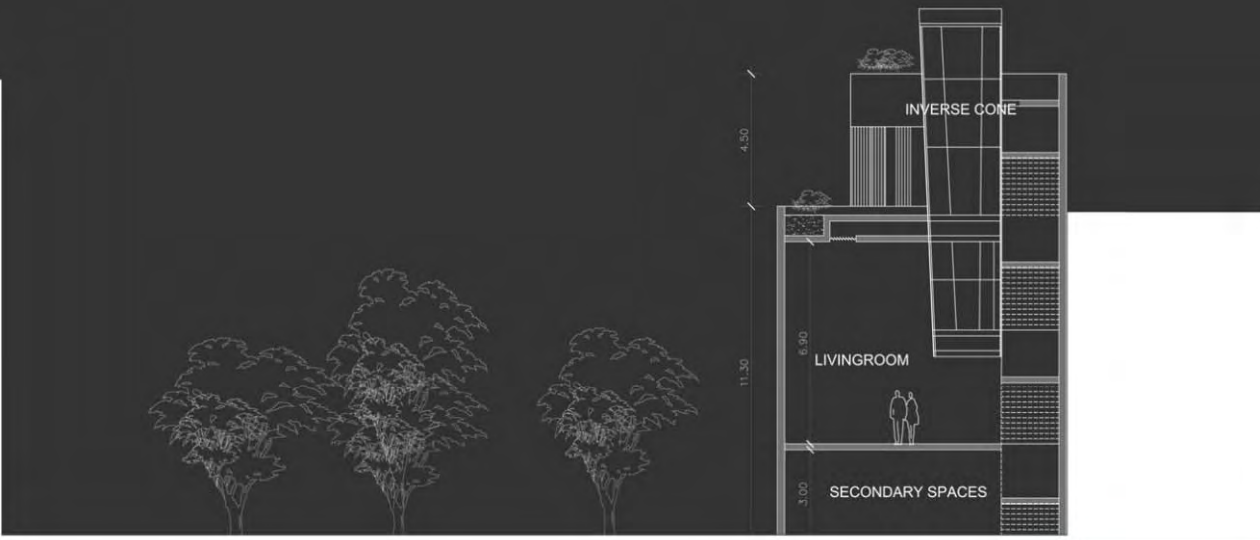
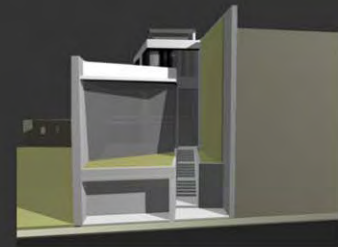




third floor plan 1:300



roof plan 1:300



section BB 1:200

