

christina voutou

maria doxa

marilena dyrani-maouni

demetris evangelou

ruRAl
studio

efi orfanou

dimitra papageorgiou

katerina kouskoura

thomais siarkou

kostas tsamis

daniel wicke

DESIGNING

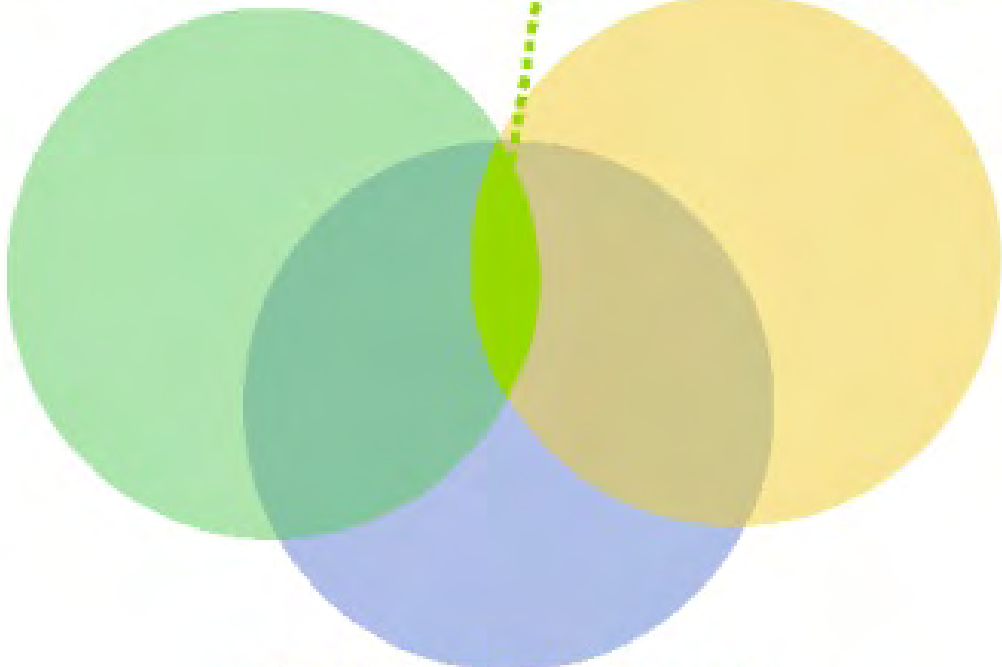
A 0 CO₂ EMISSIONS
HOUSE . . .

DESIGNING
THE WAY TO DESIGN
A 0 CO₂ EMISSIONS
HOUSE . . .

BUILDING GREEN

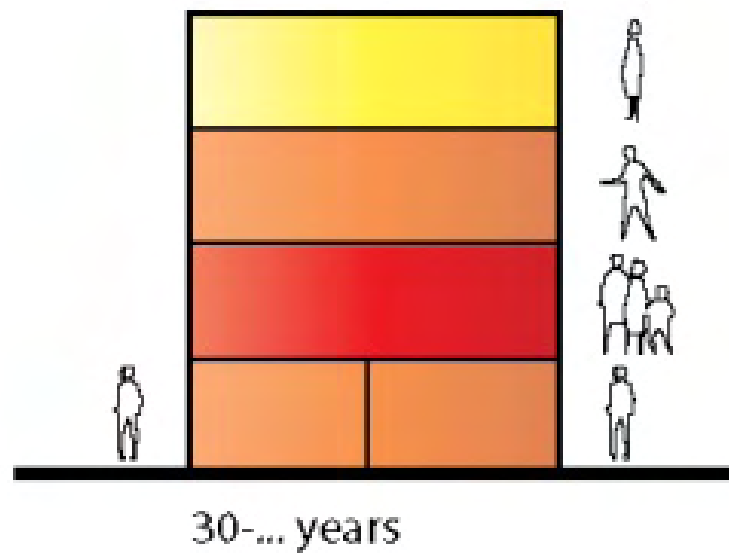
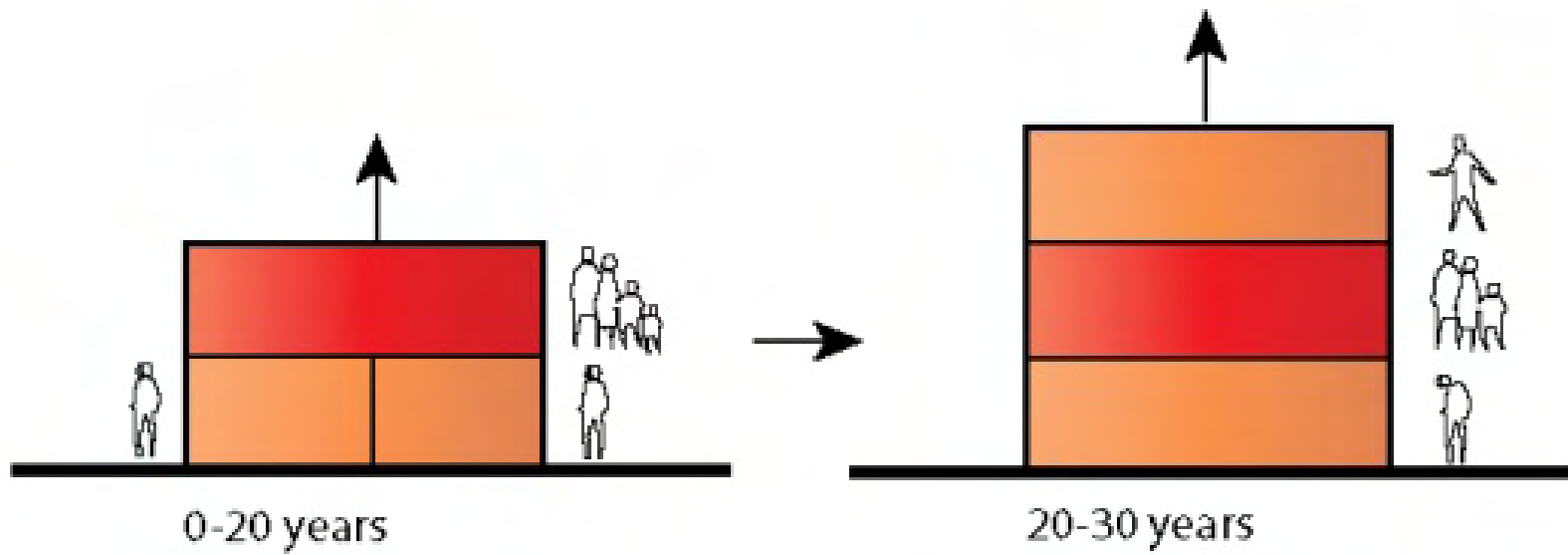
ENVIRONMENTALLY

SOCIALLY

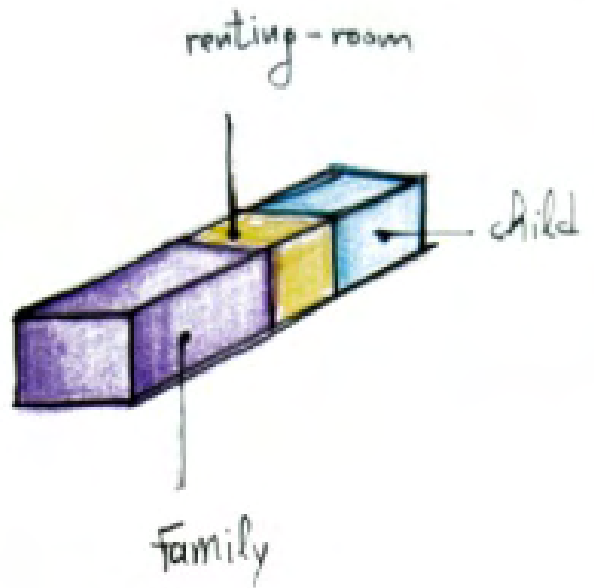
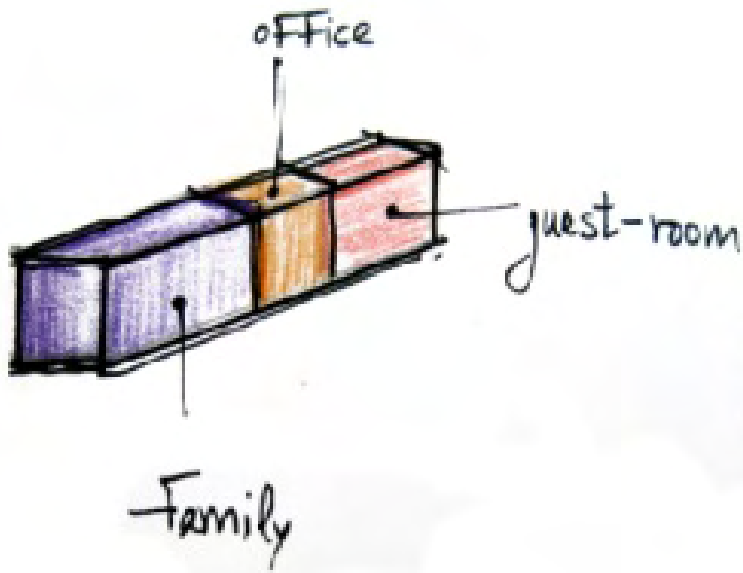
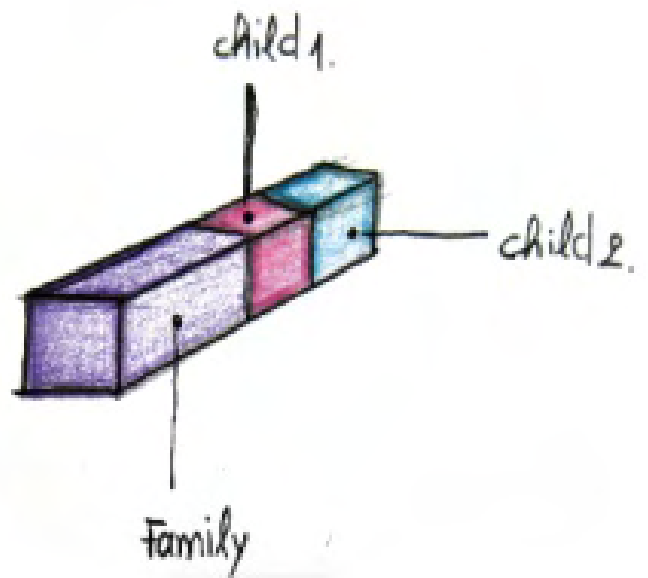
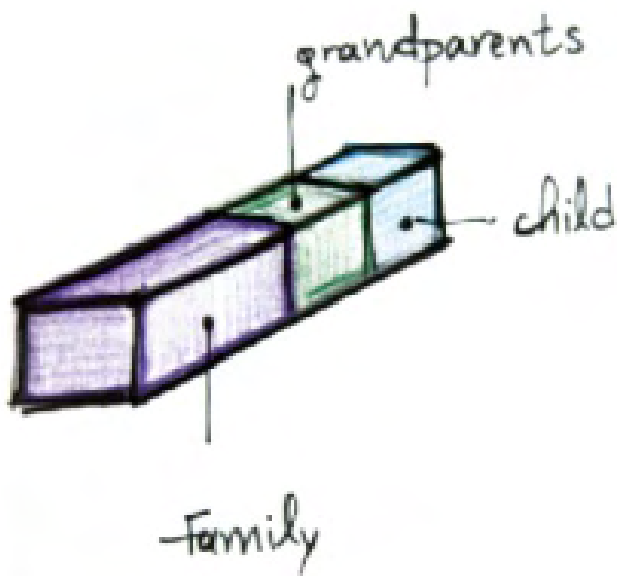


ECONOMICALLY





family and building grow up

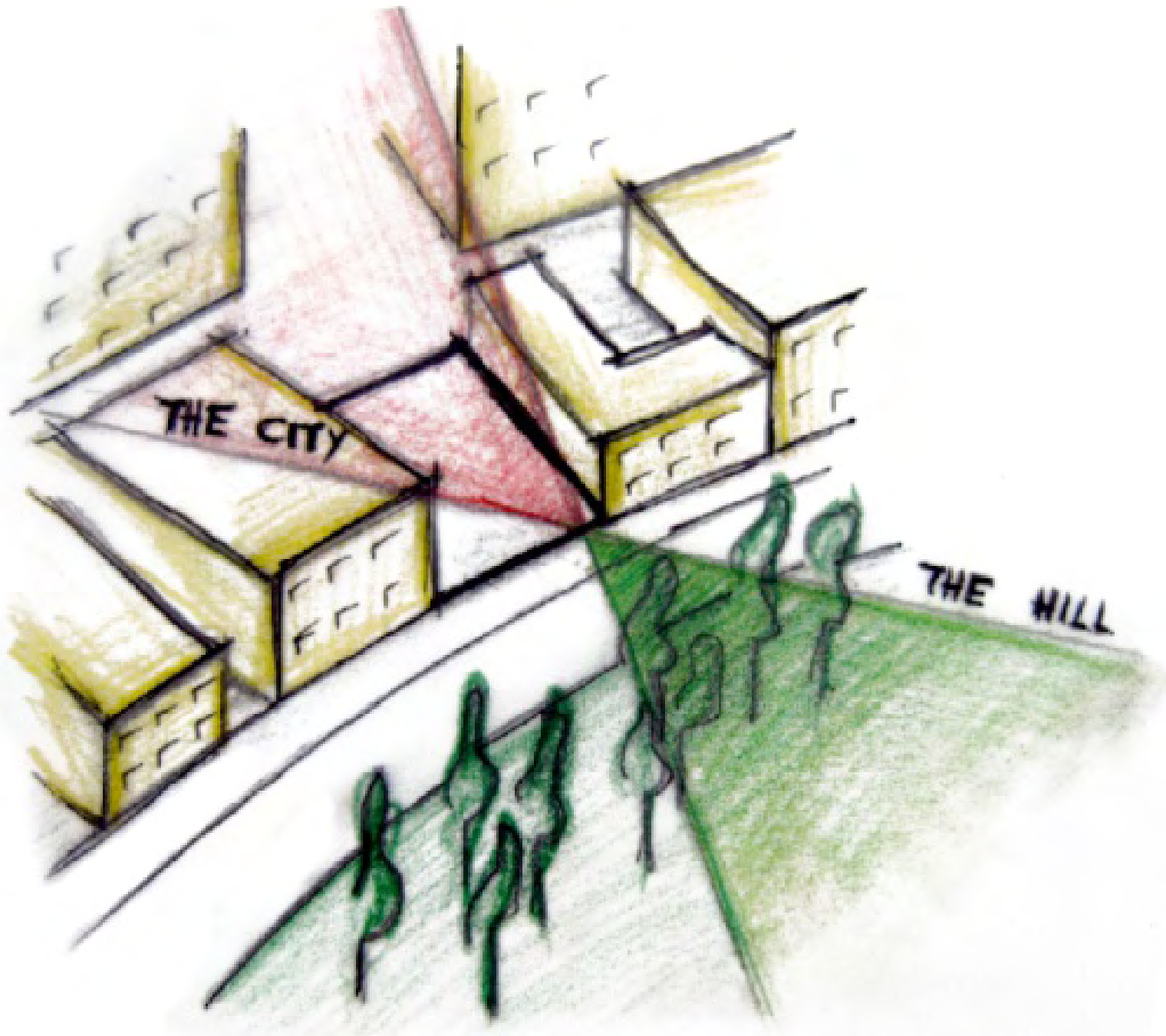




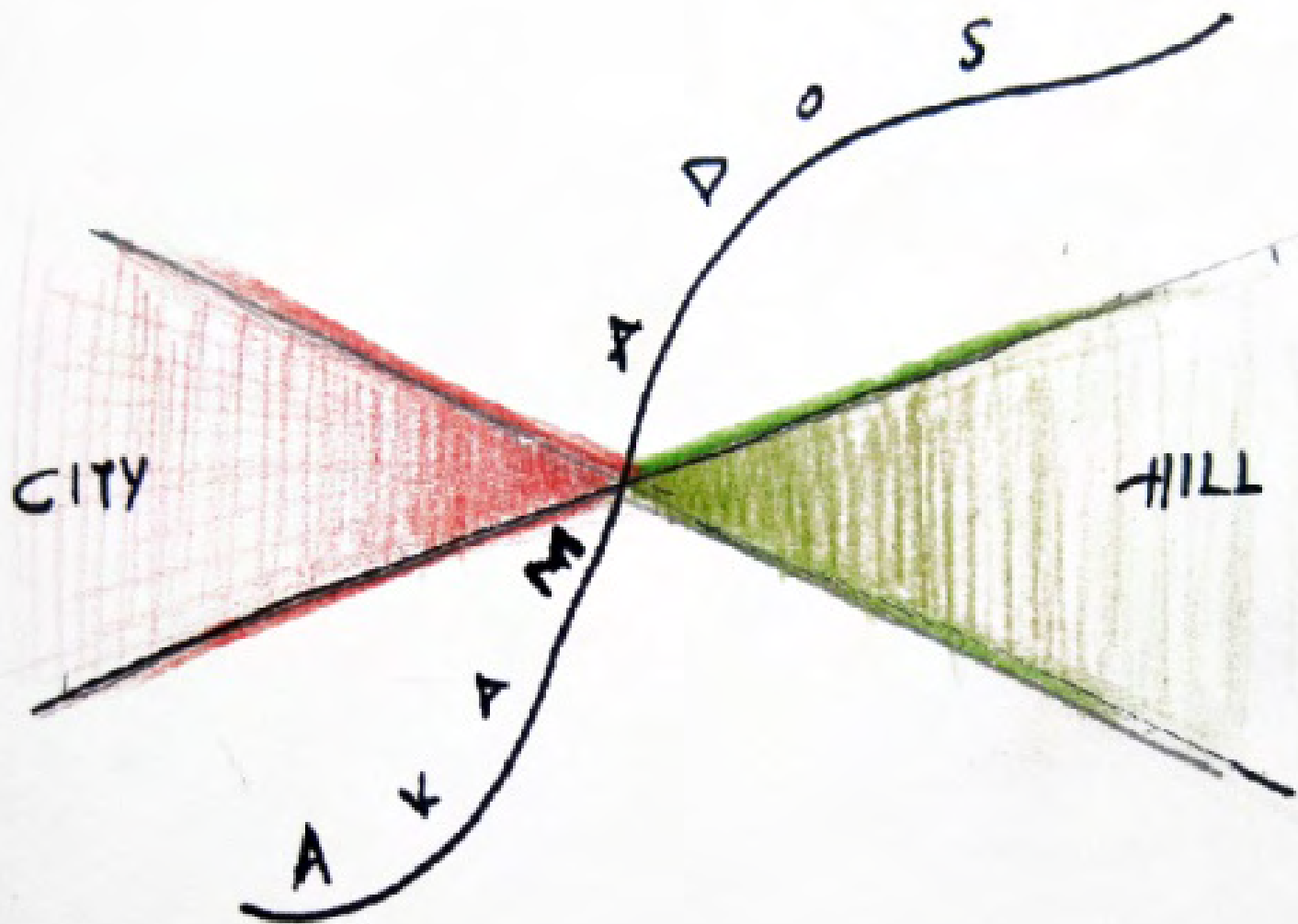


SITE

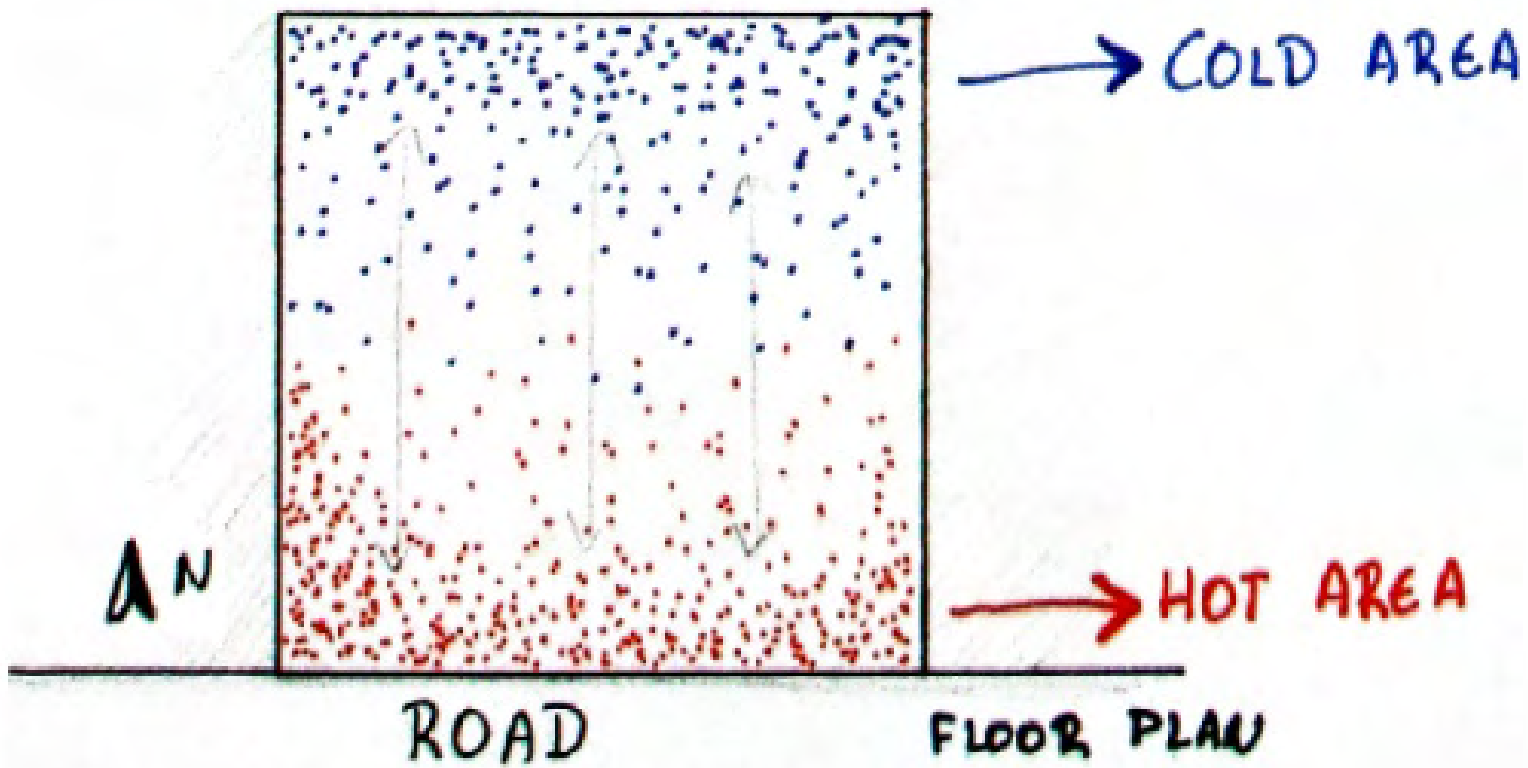




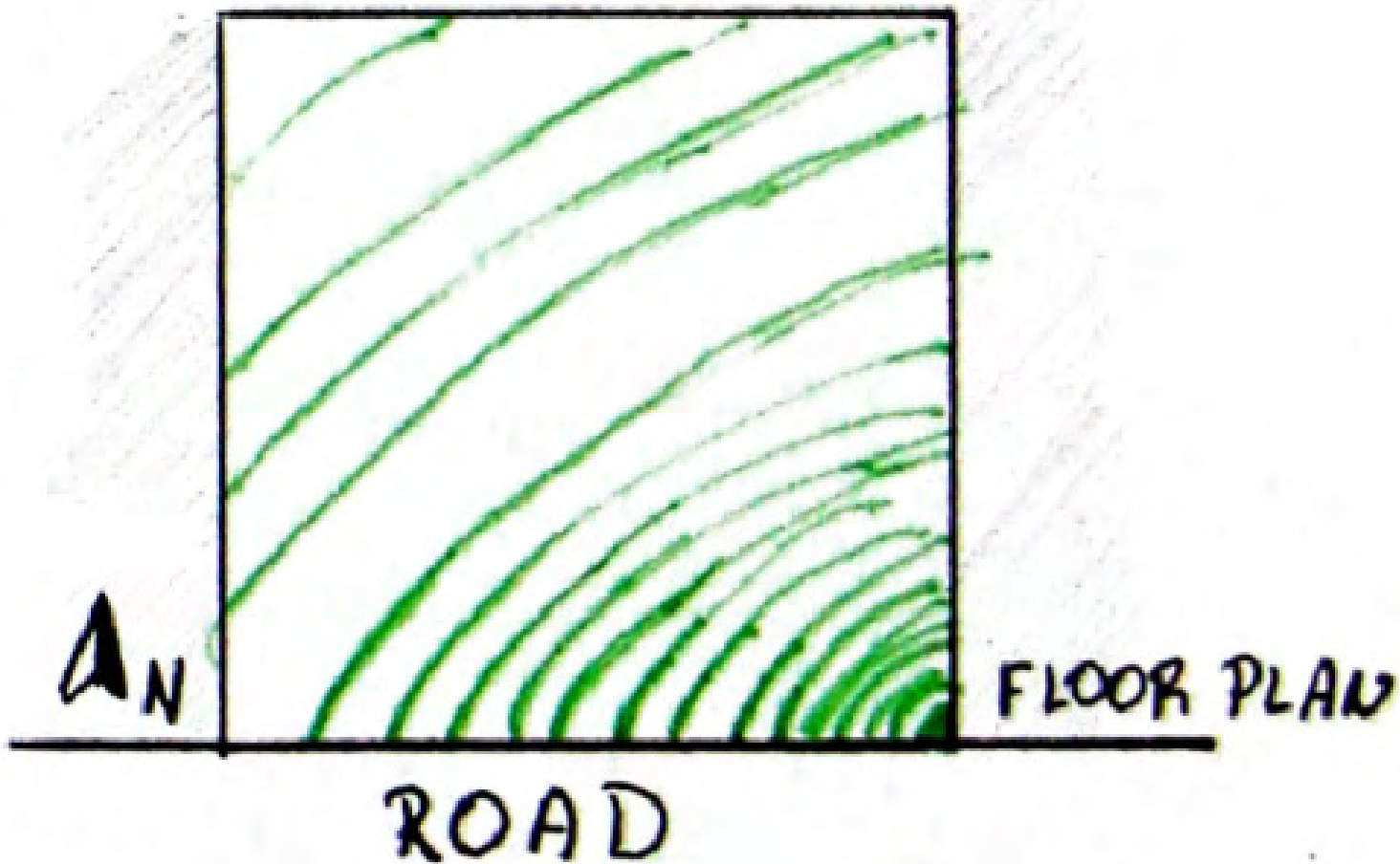
Green Entering The City

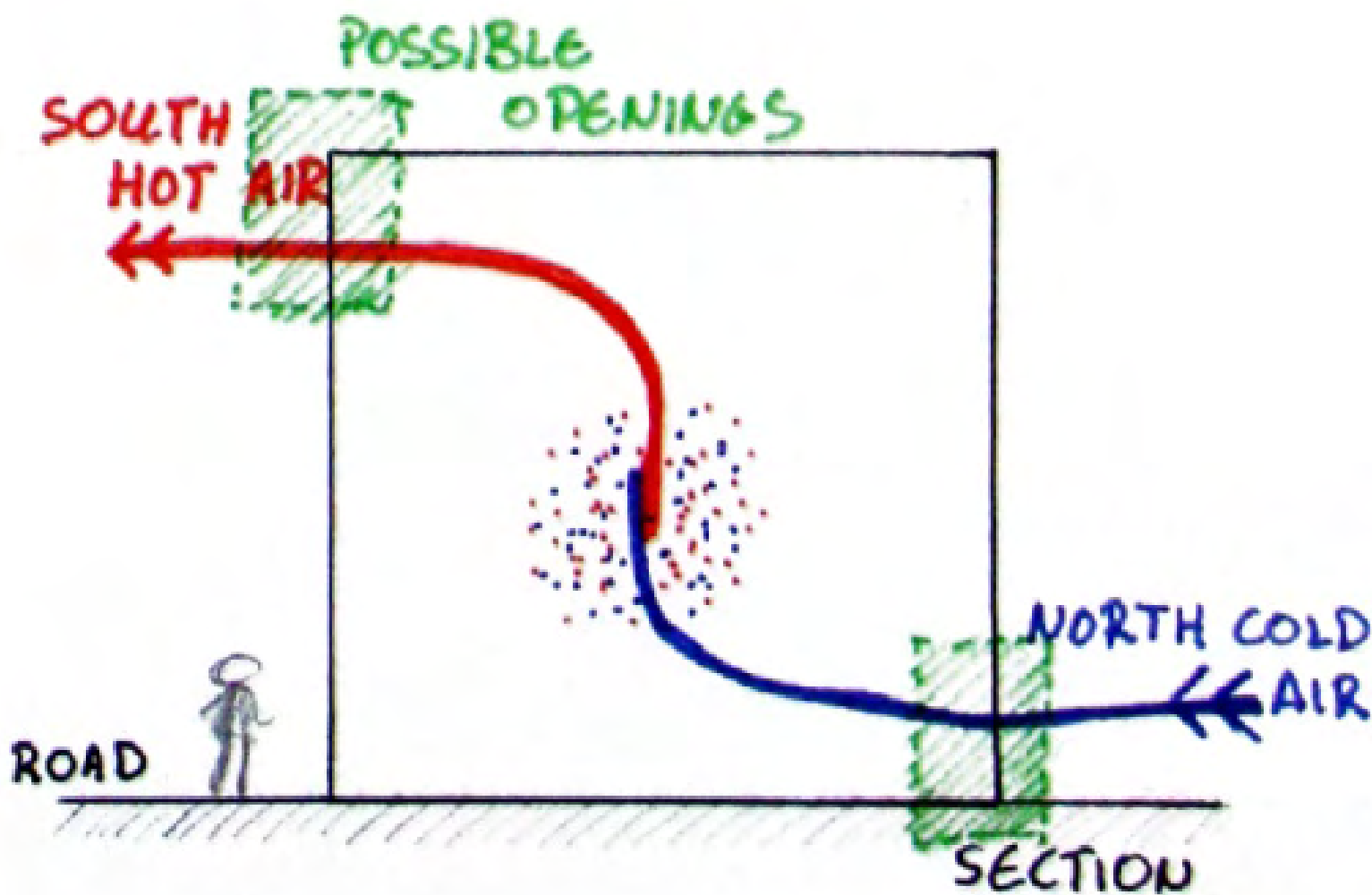


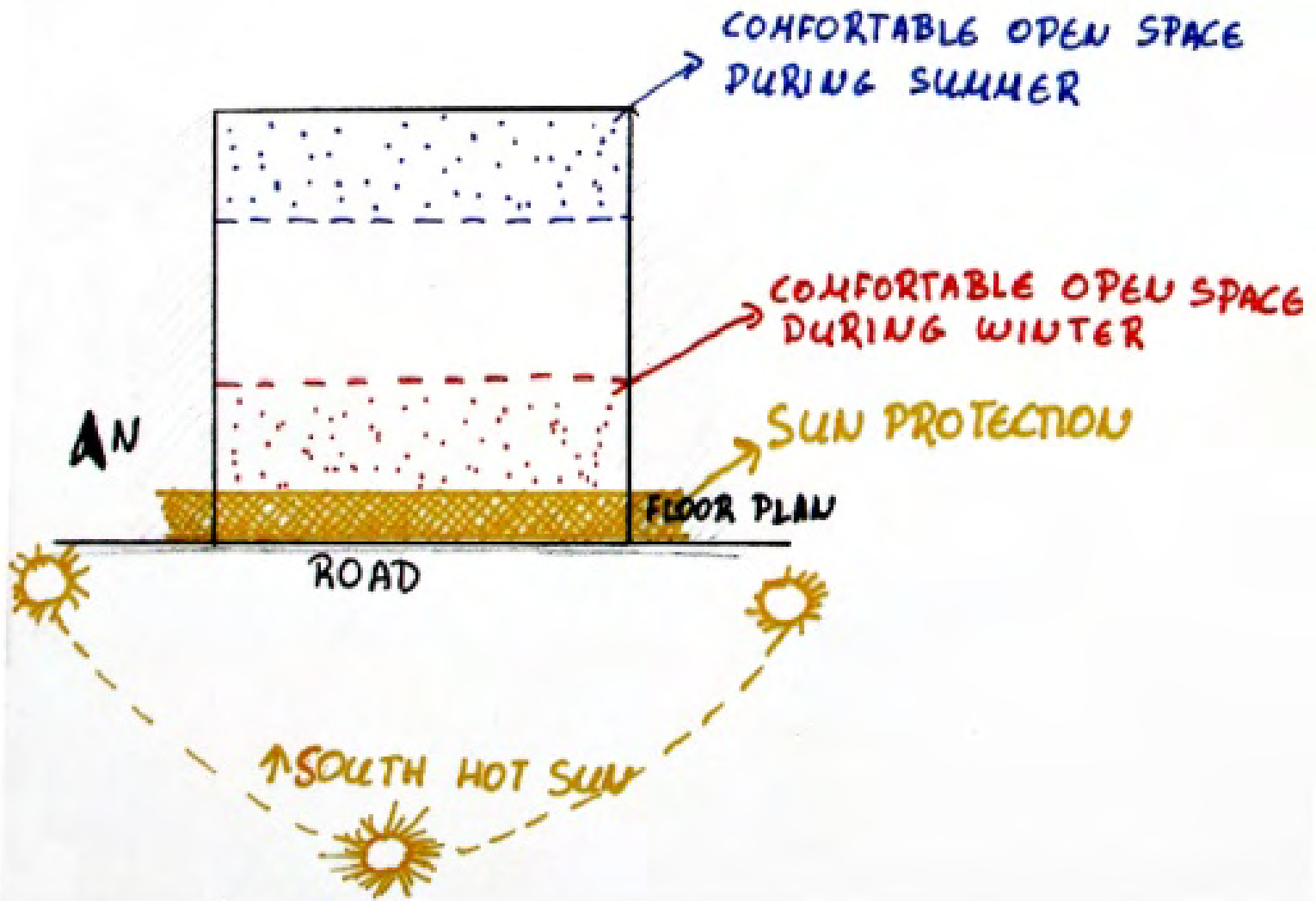
ENVIRONMENTAL
PARAMETERS



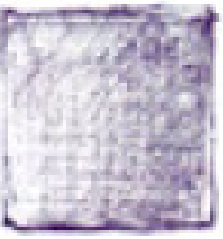
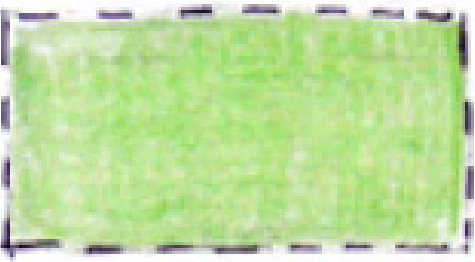
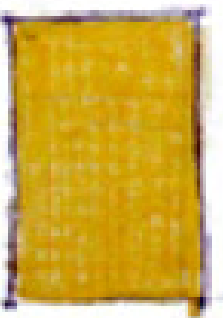
SOUND







24.00
23.00
22.00
21.00
20.00
19.00
18.00
17.00
16.00
15.00
14.00
13.00
12.00
11.00
10.00
9.00
8.00
7.00
6.00
5.00
4.00
3.00
2.00
1.00
00.00



bedroom

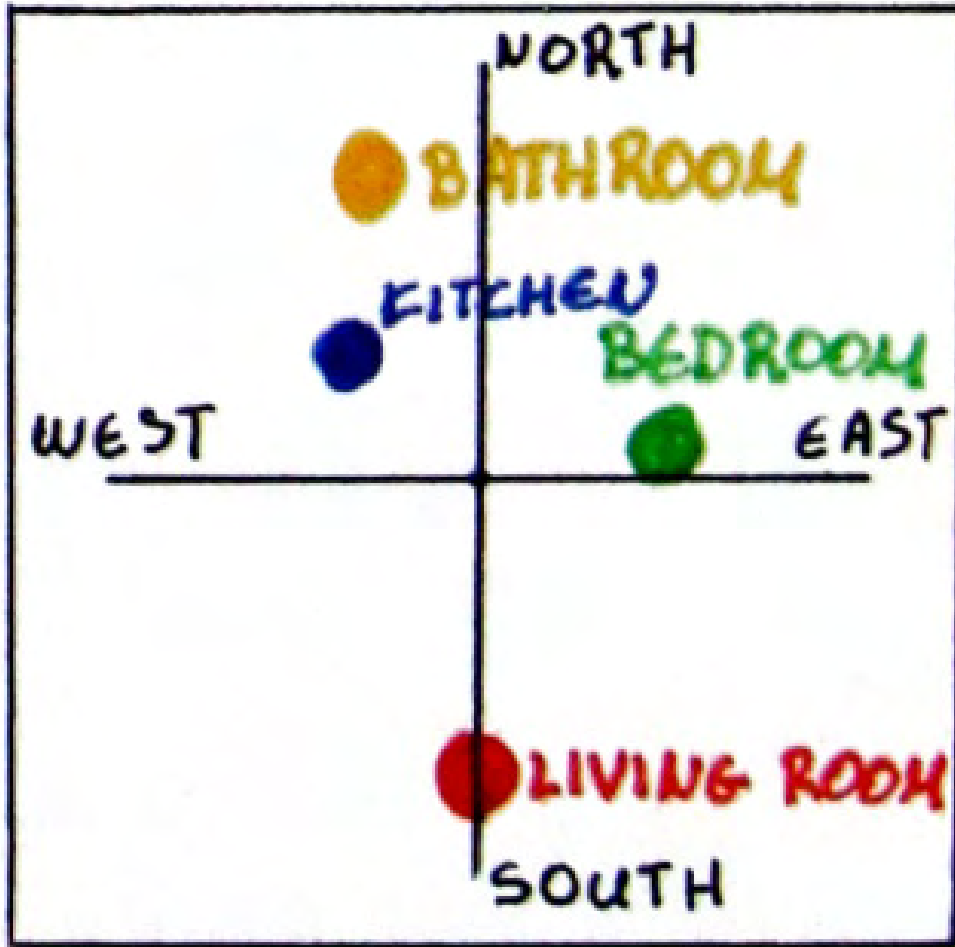
kitchen/
dining
room

living room

worktable/
library

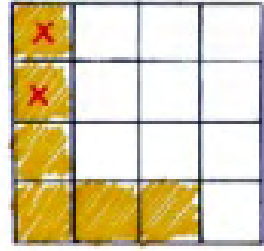
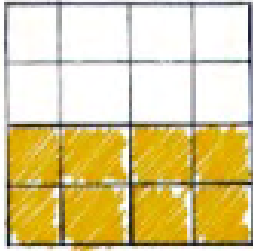
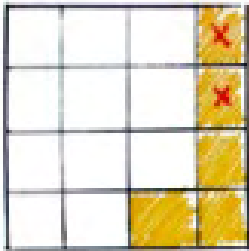
out of
house

spaces

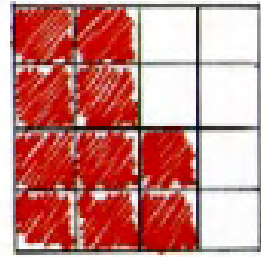
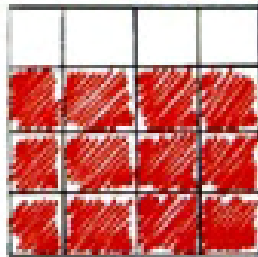
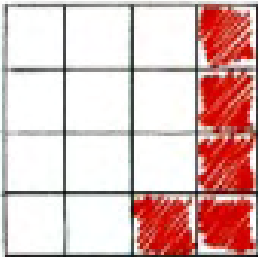


ROOMS'
ORIENTATION

SUNLIGHT DURING THE DAY



HEAT DURING THE DAY

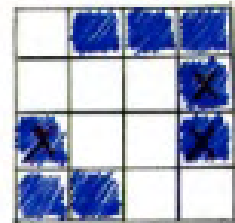
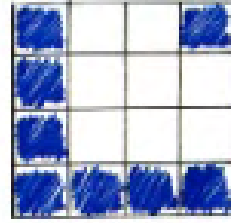
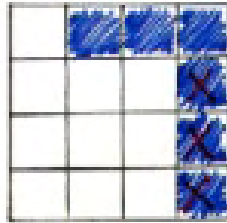


MORNING

NOON

AFTERNOON

WIND DURING YEAR



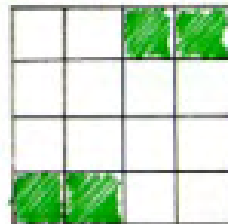
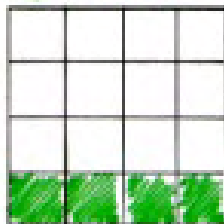
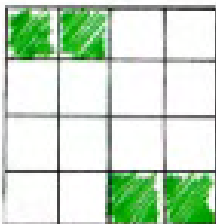
AUTUMN

WINTER

SPRING

SUMMER

COMFORTABLE OPEN SPACES



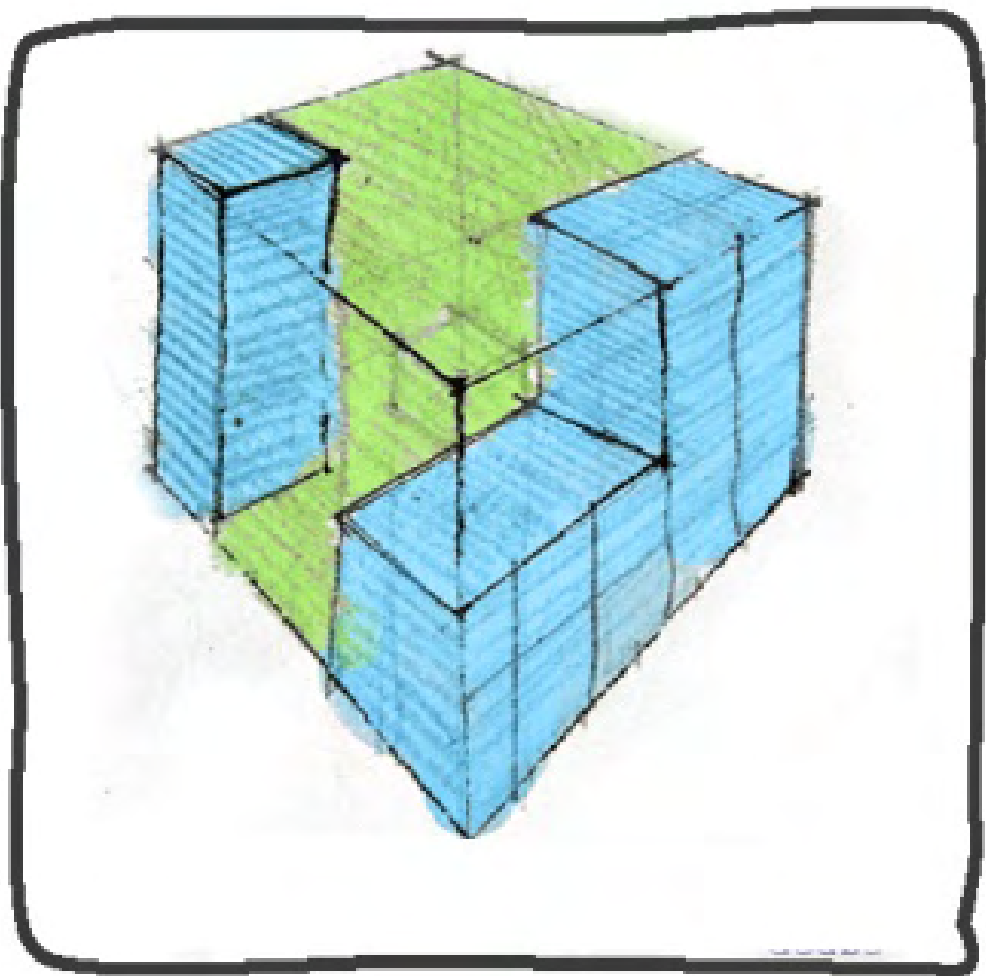
AUTUMN

WINTER

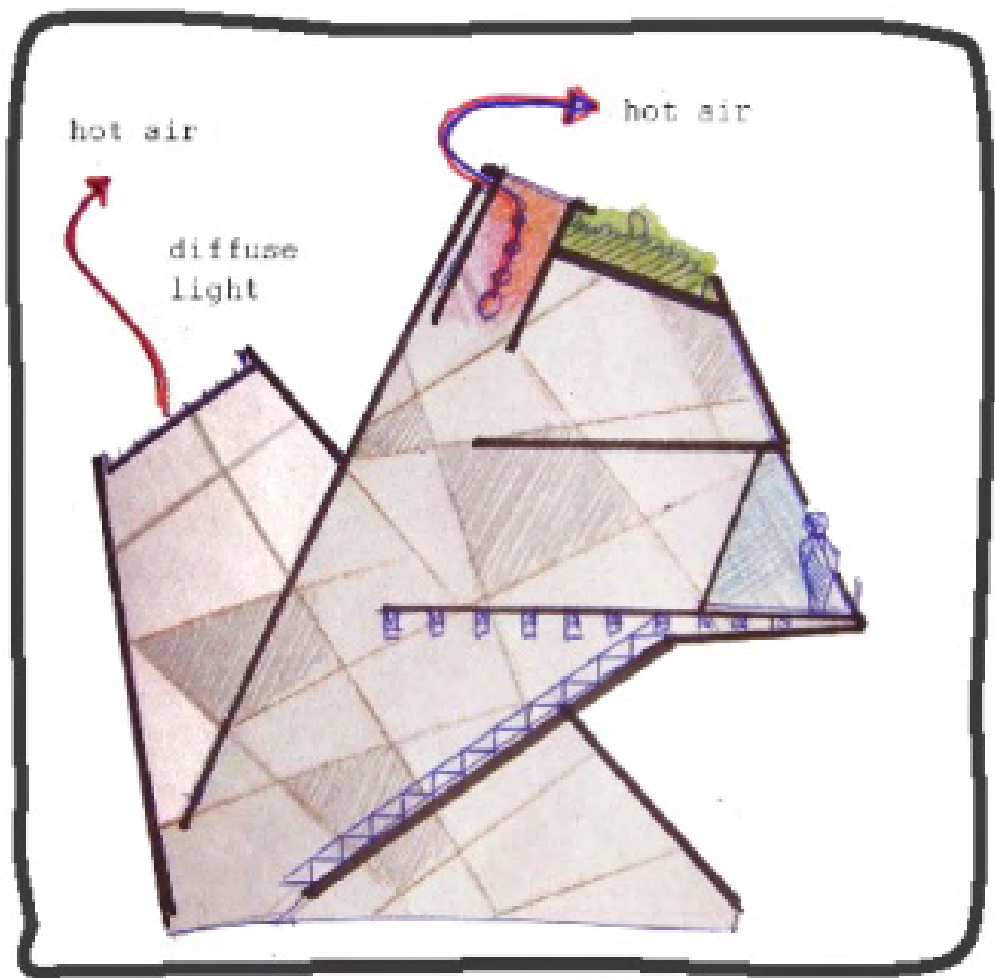
SPRING

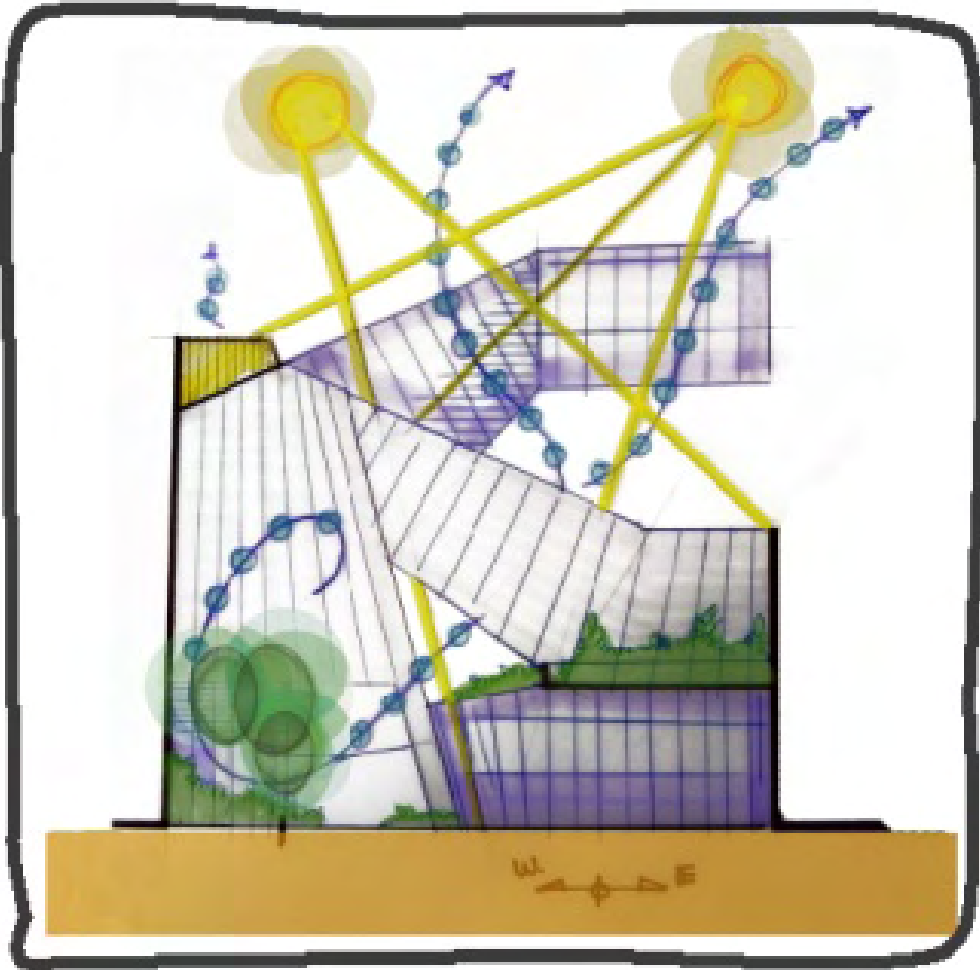
SUMMER

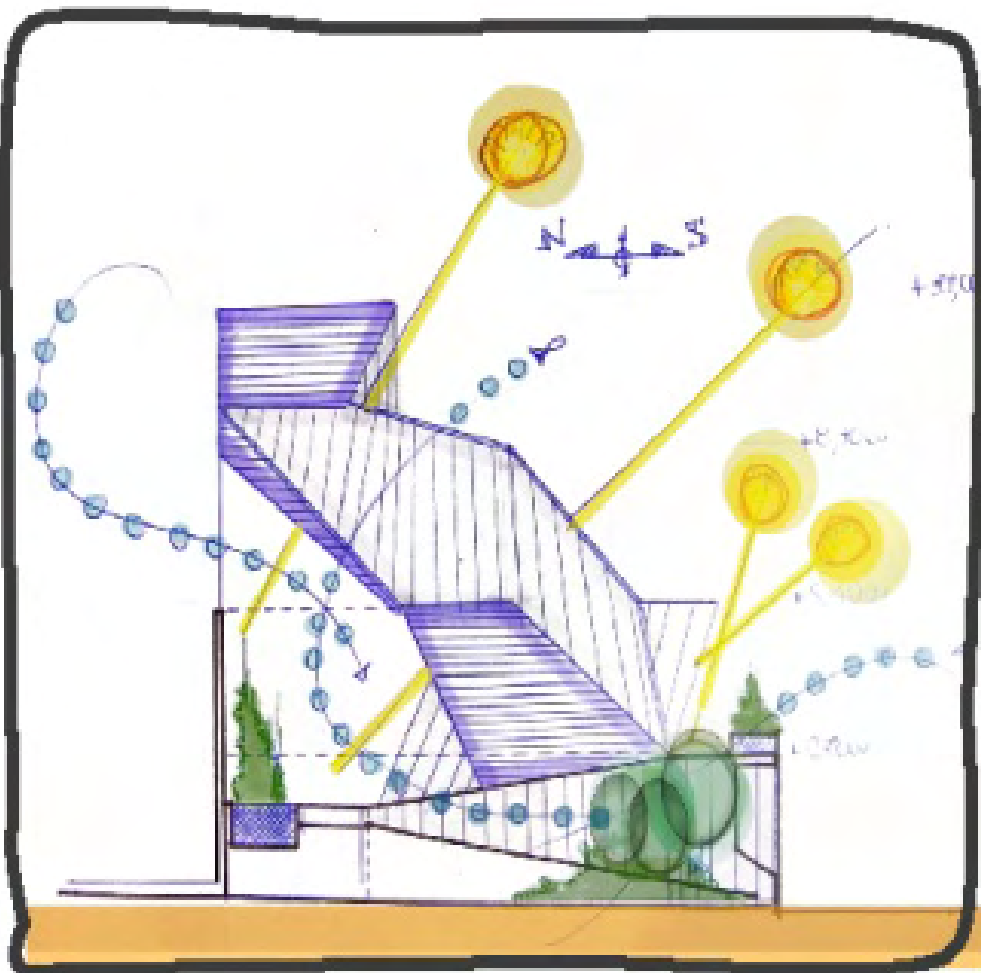


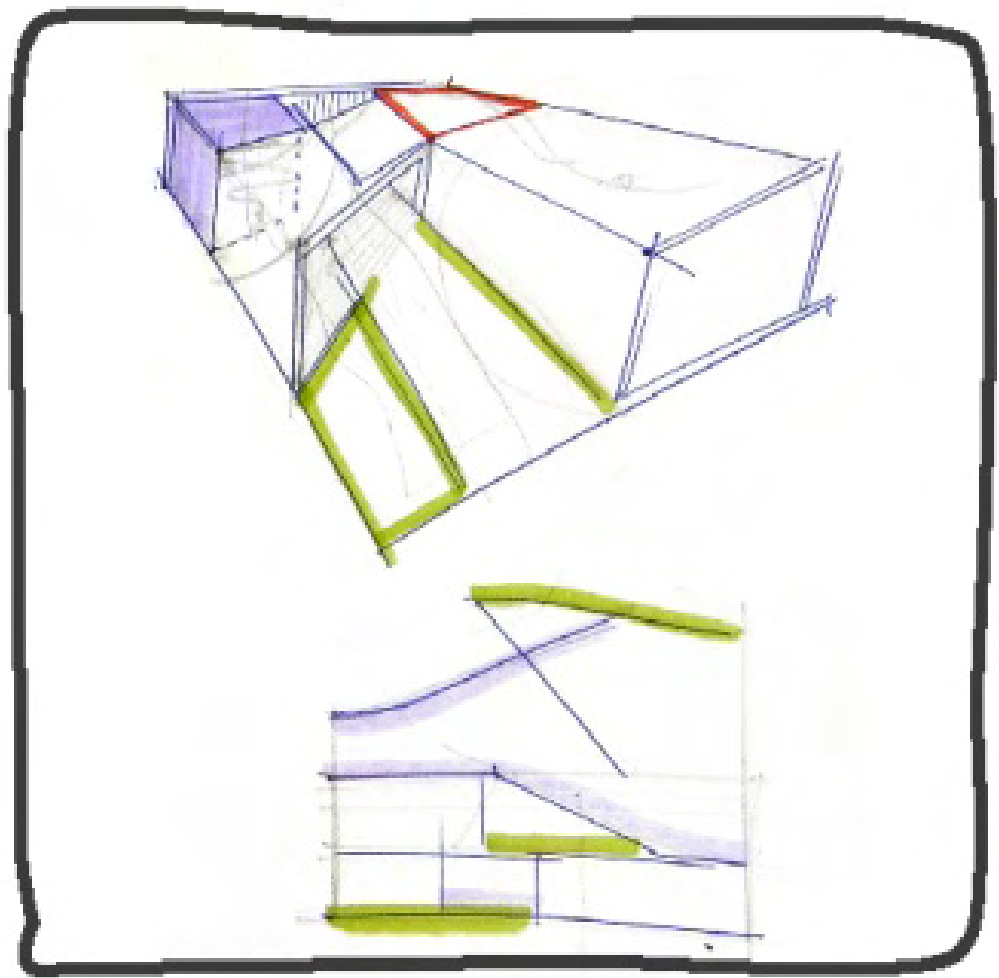


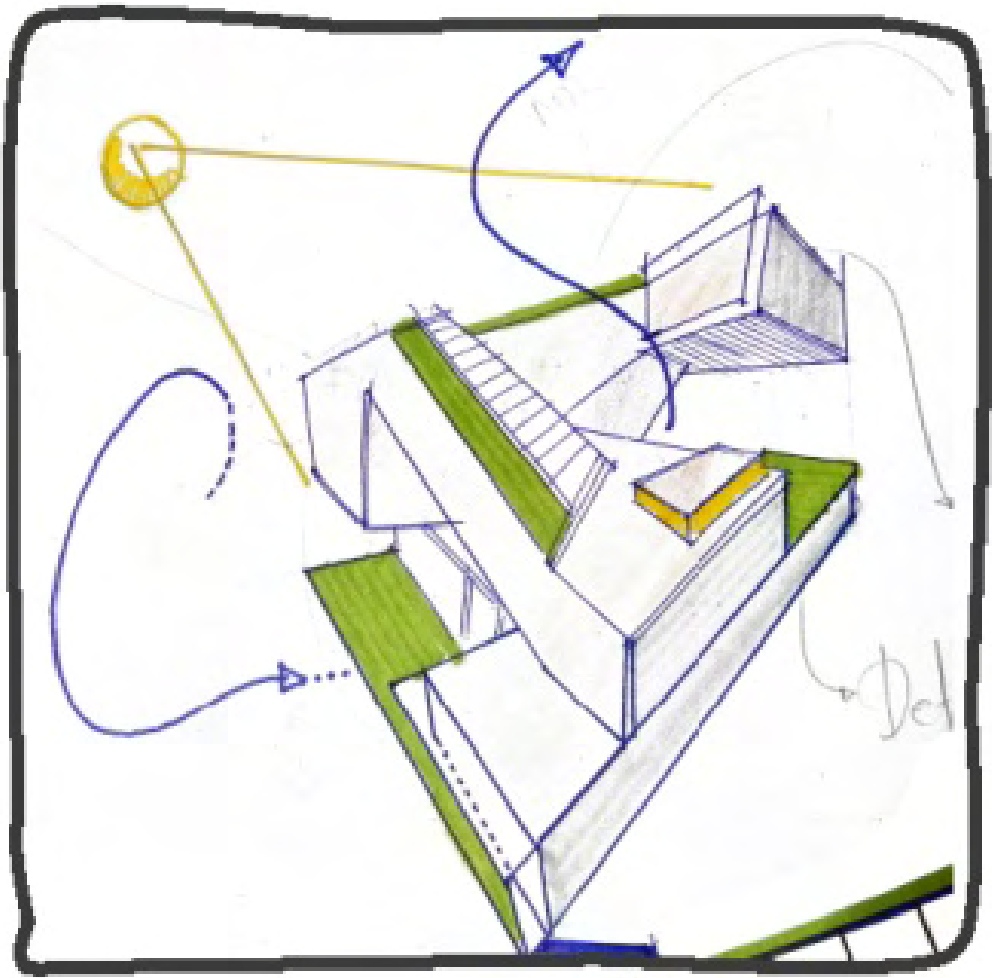
RELATIONSHIP BETWEEN INTERIOR & EXTERIOR SPACE

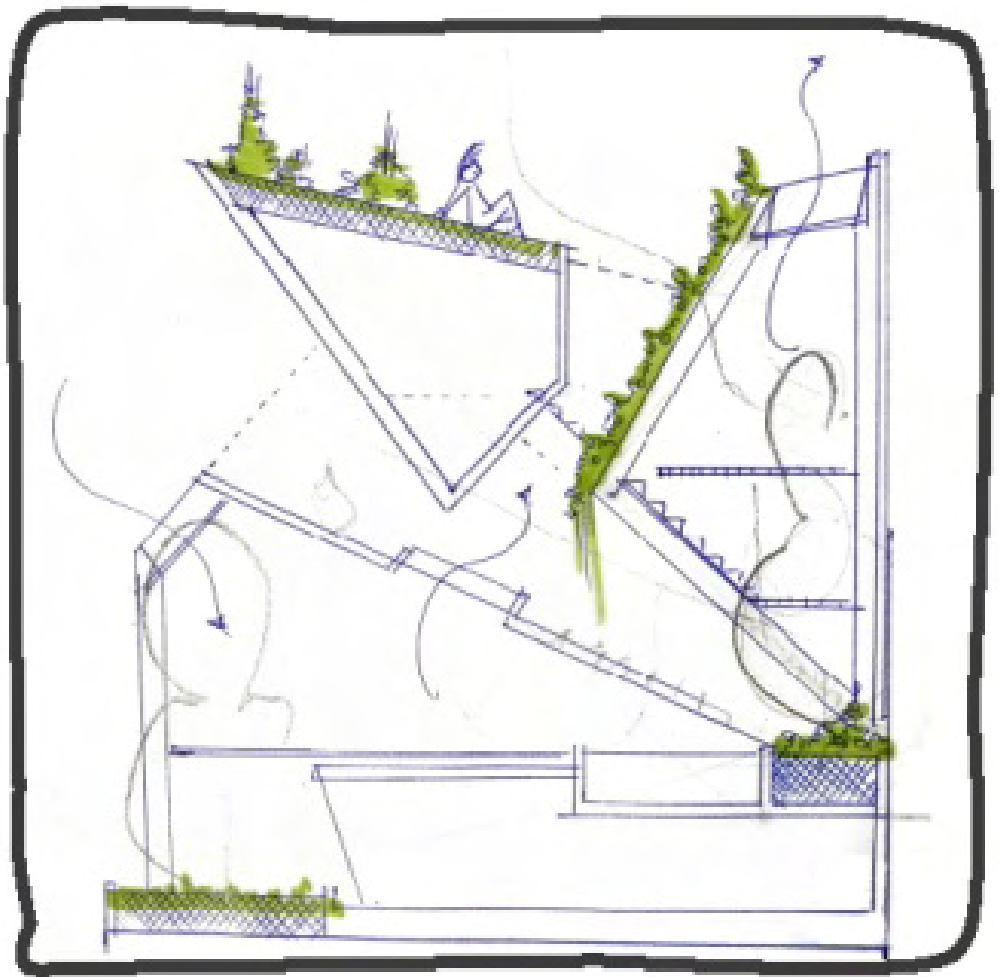


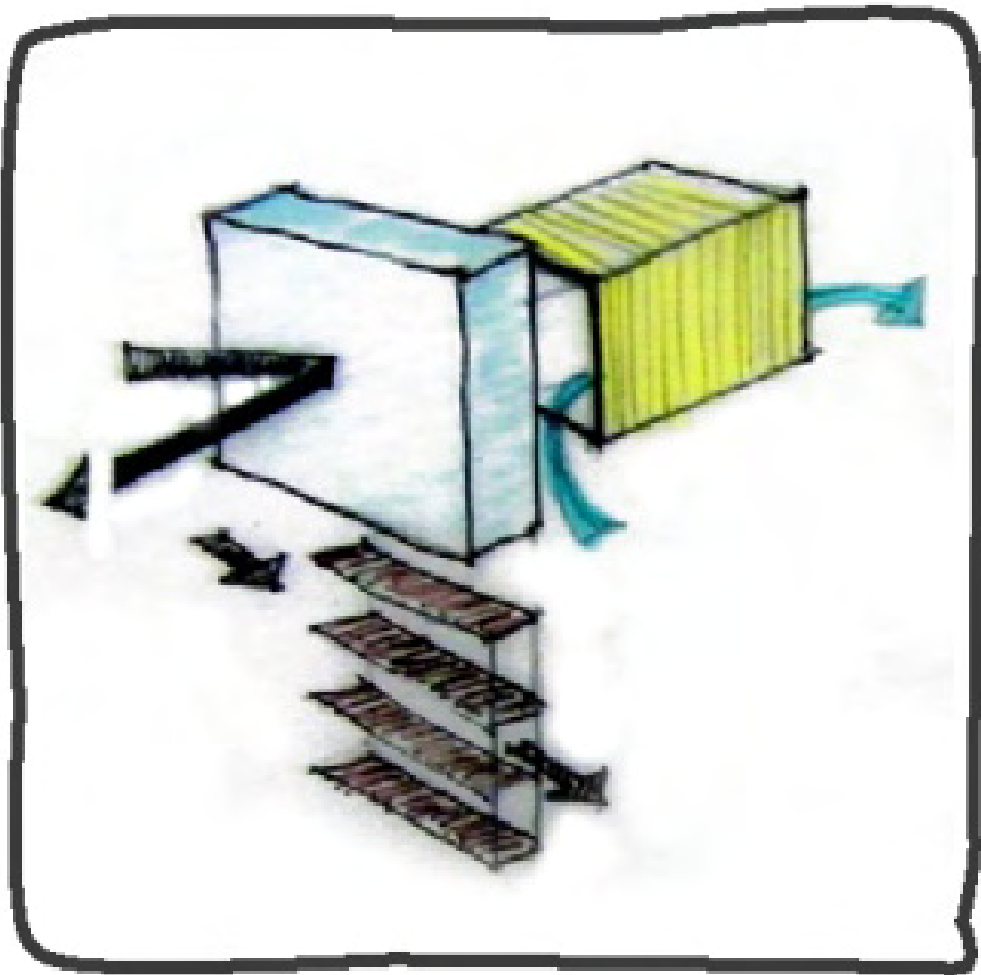


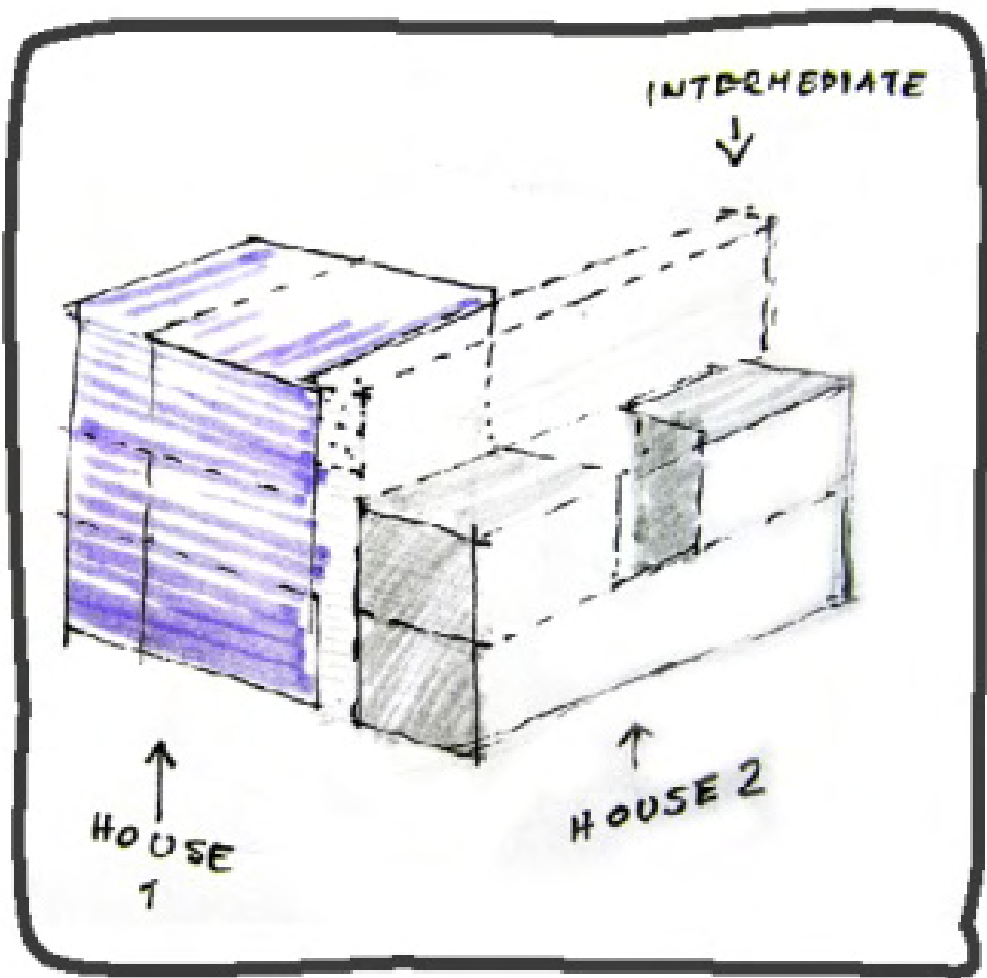


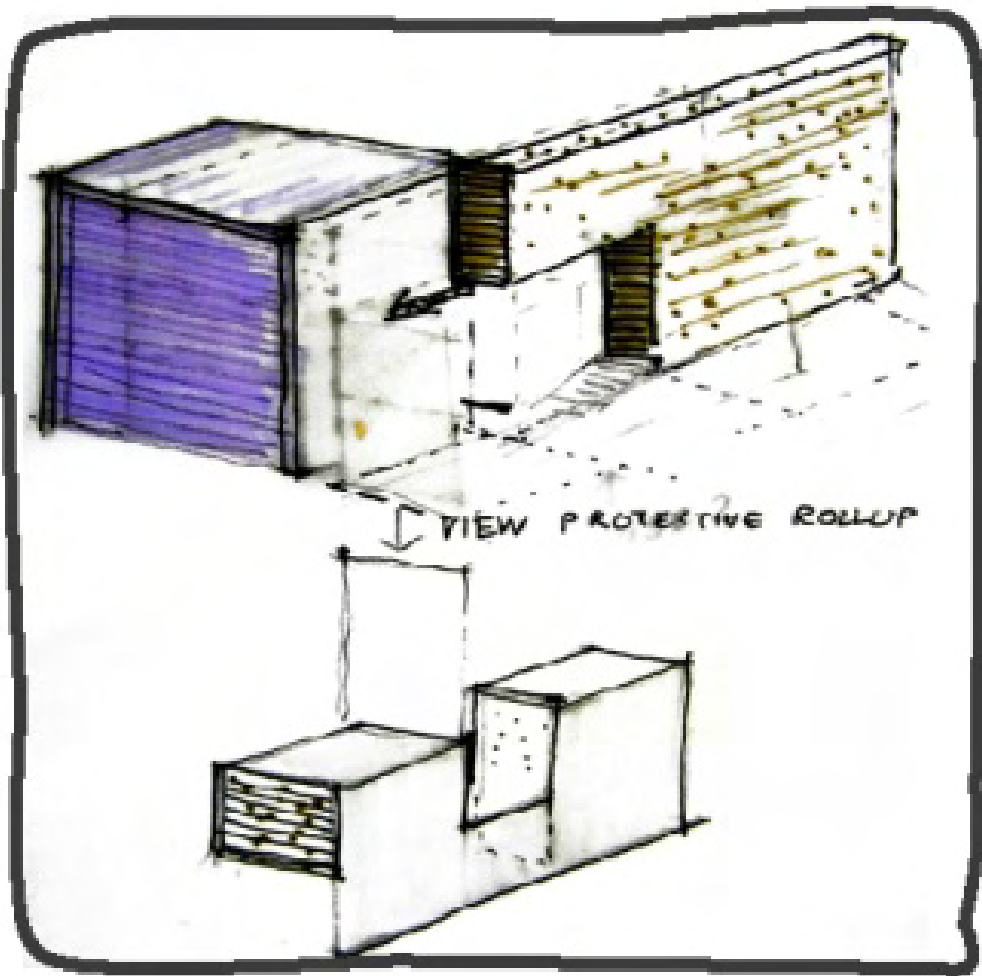


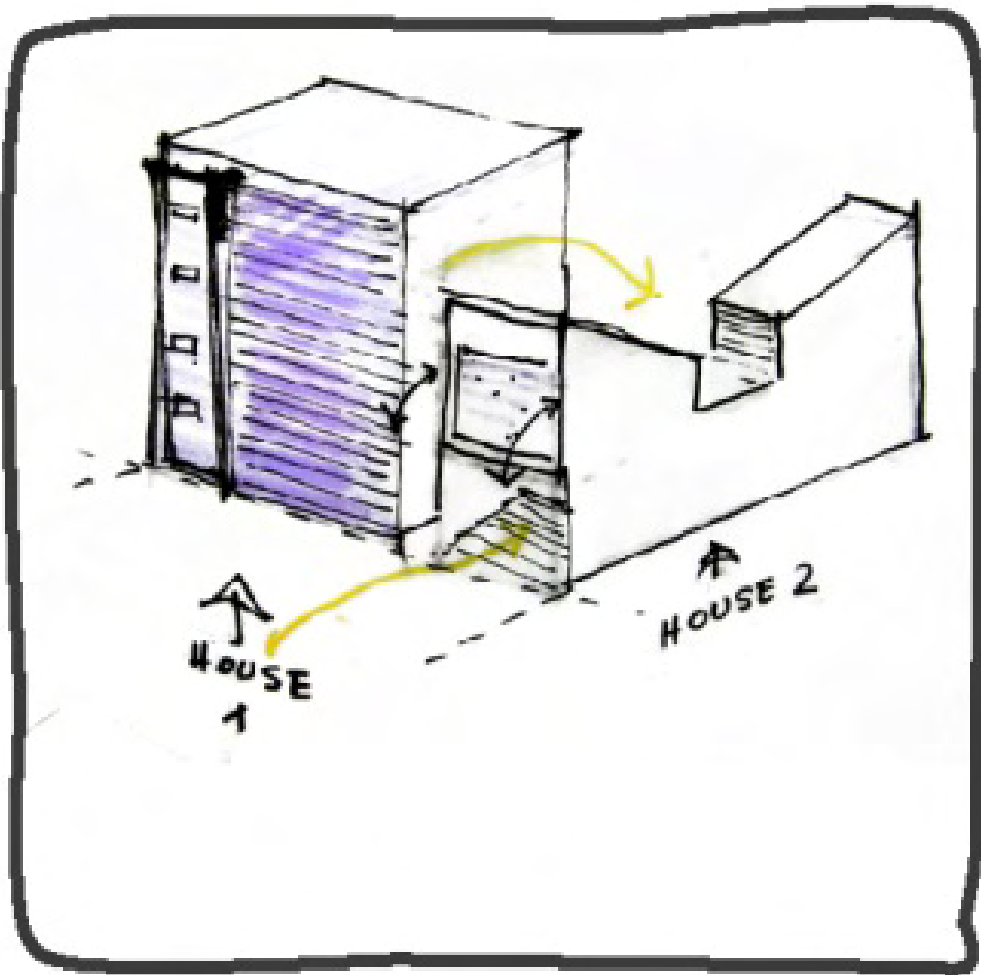


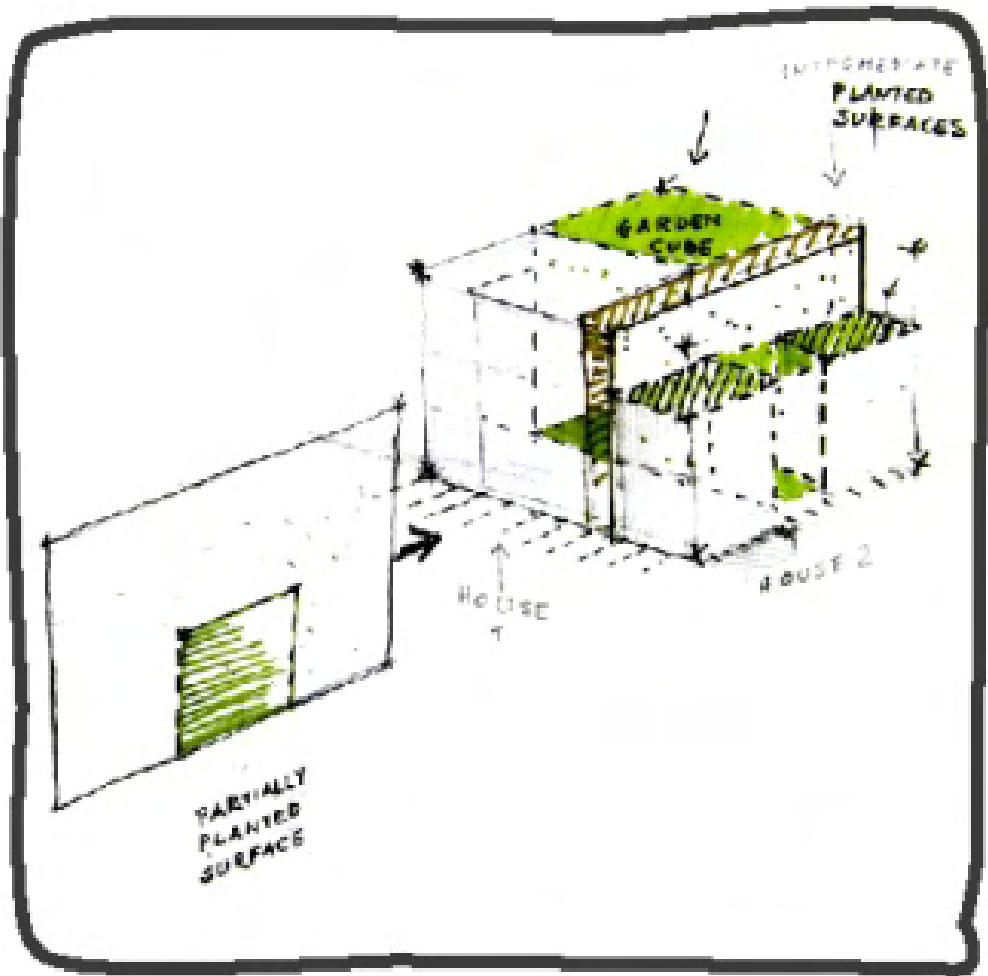


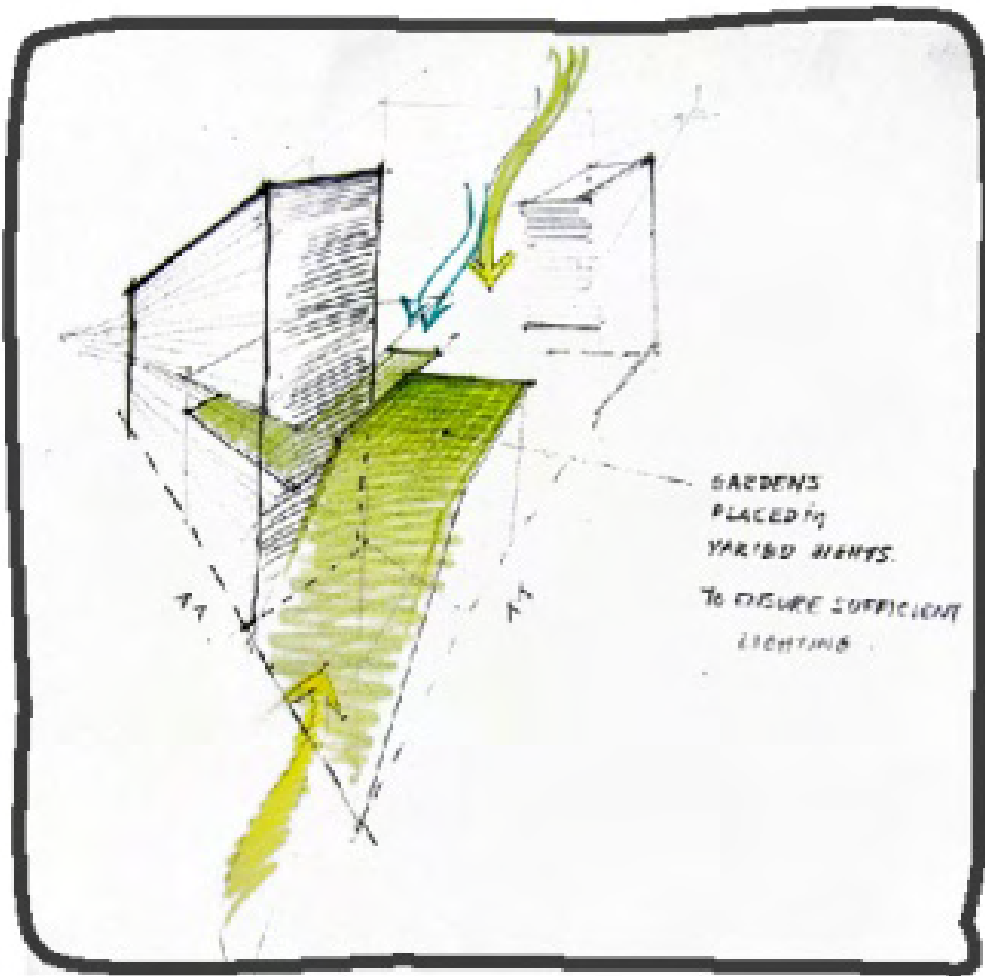


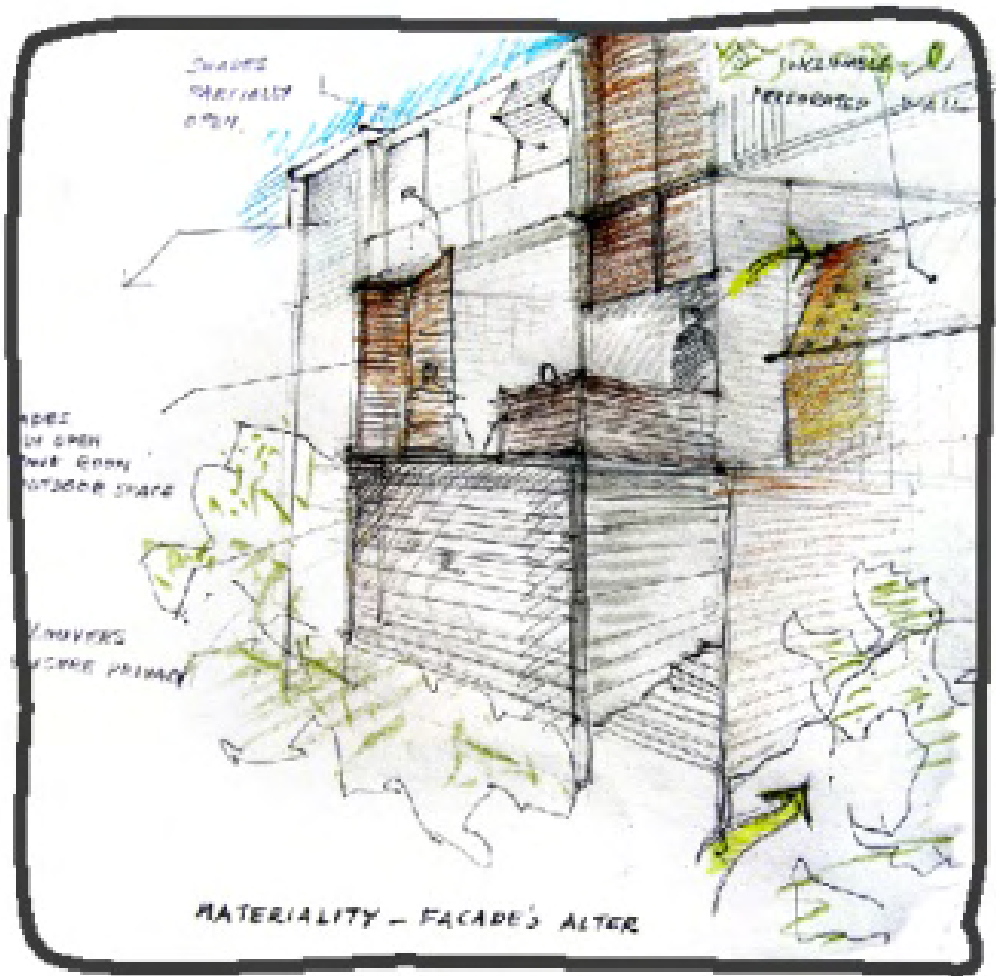


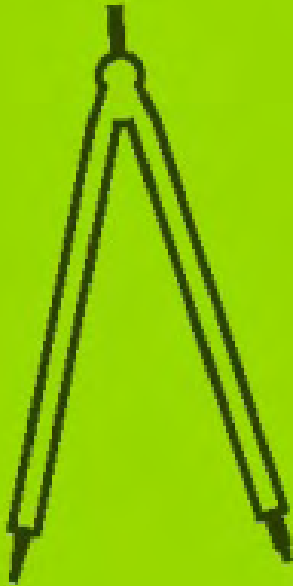




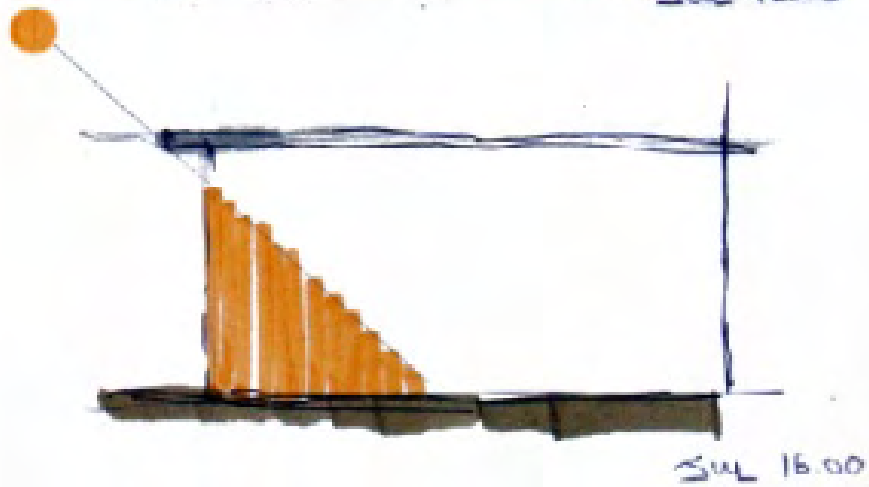
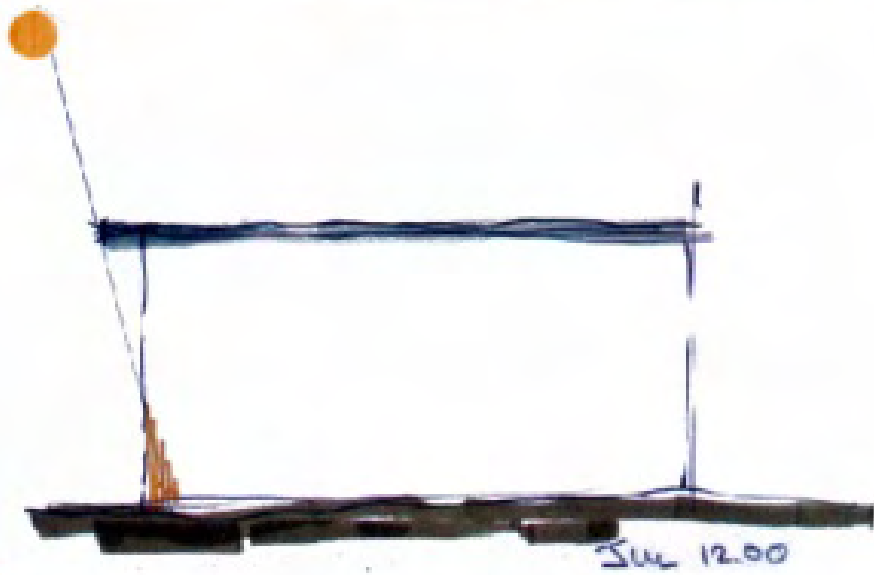
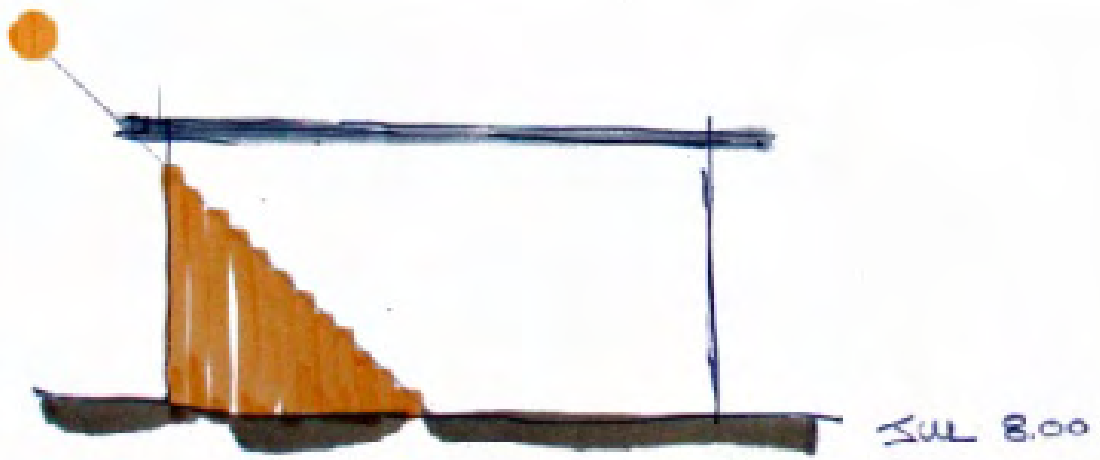


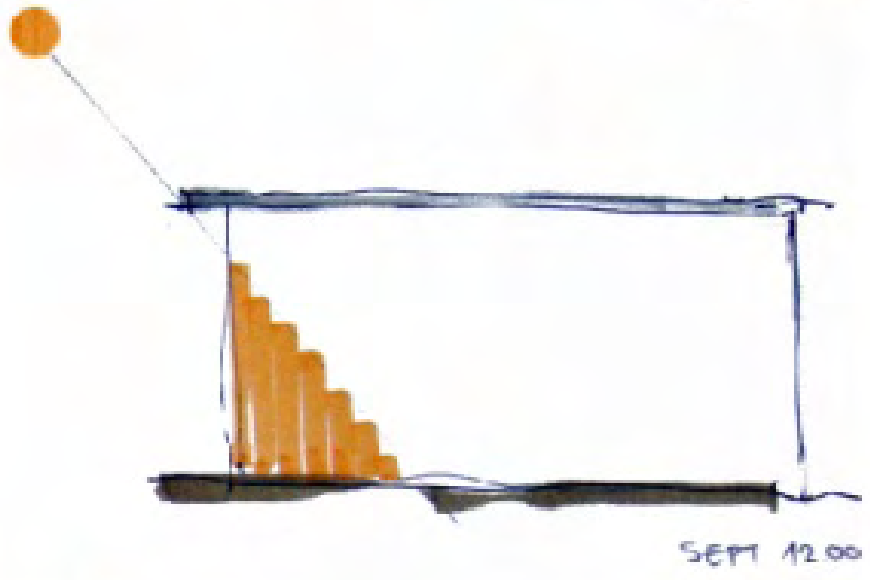
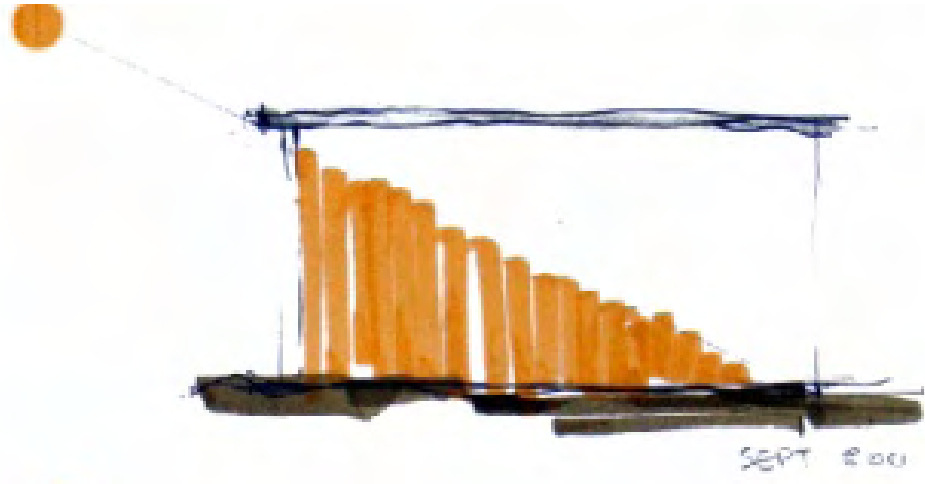


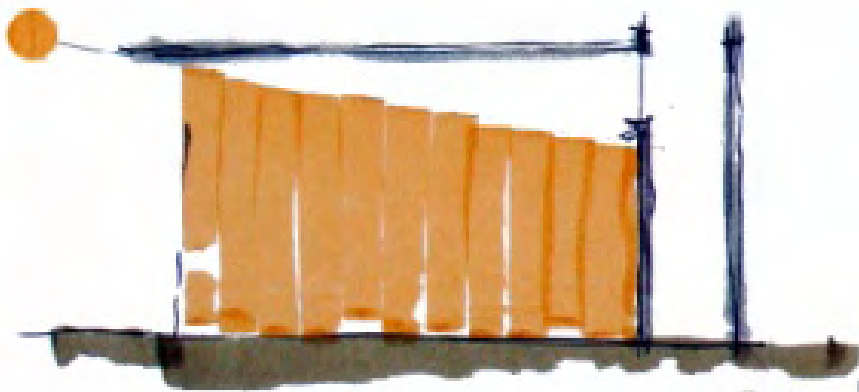




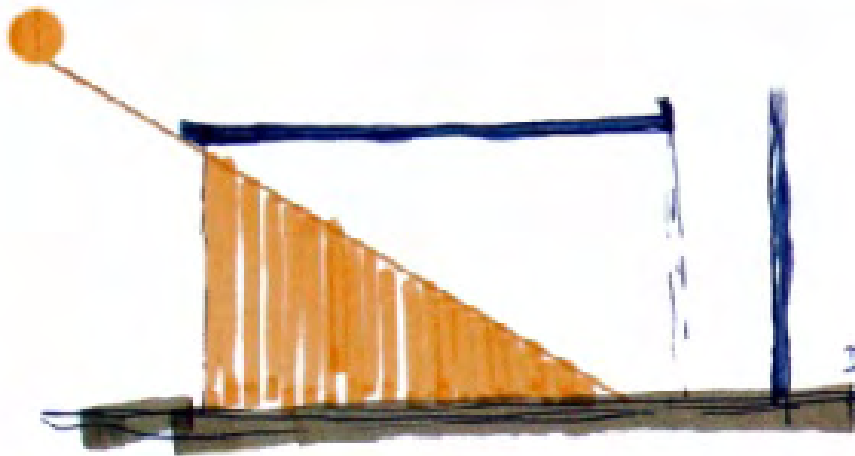
DESIGN
TOOLS



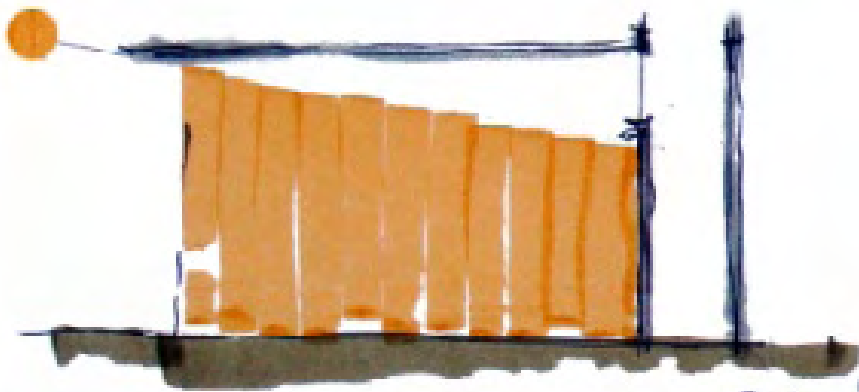




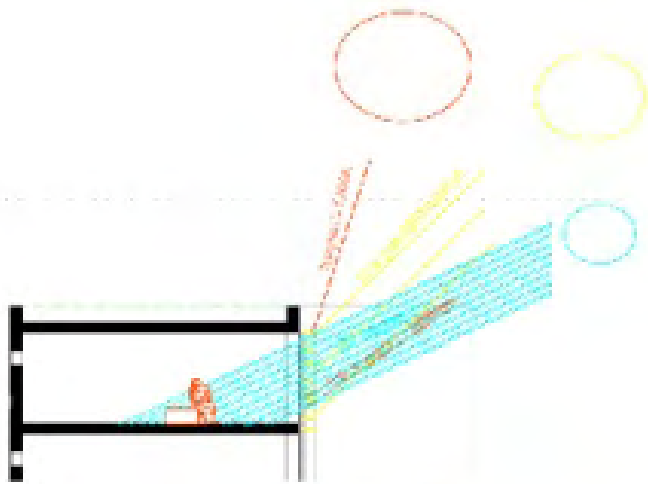
DEC 1600 08.00



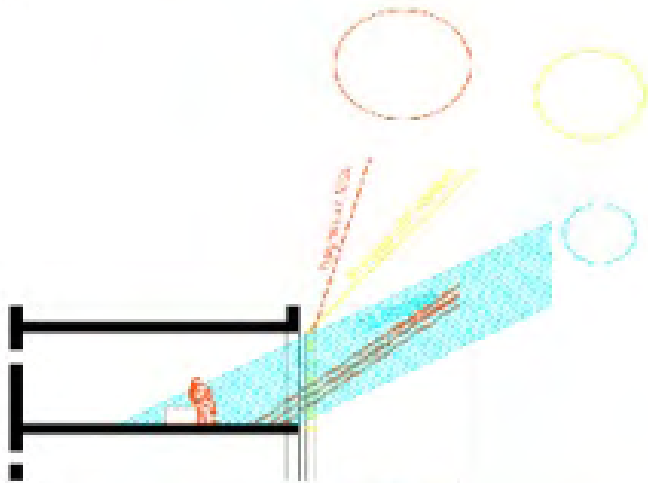
DEC 1200



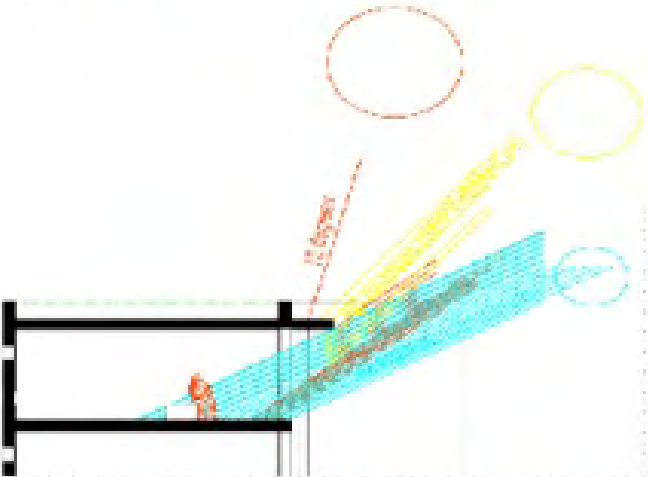
DEC 1600 08.00



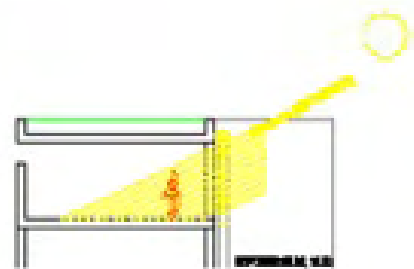
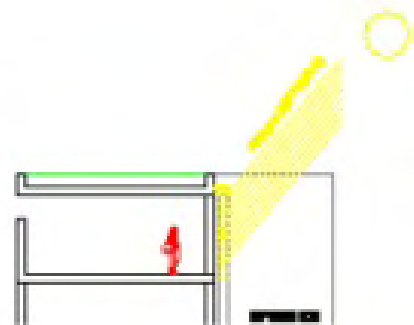
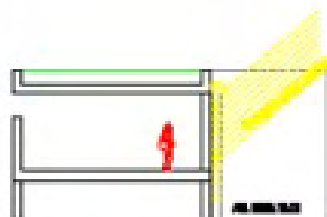
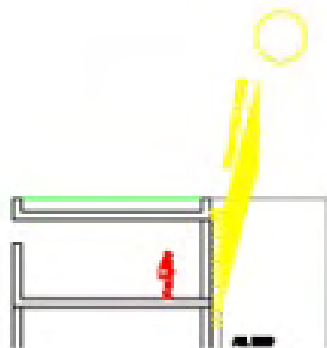
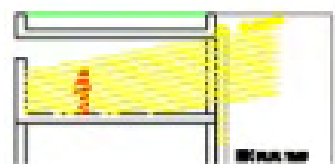
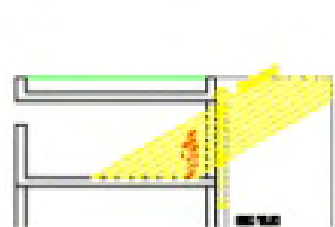
FIXED FACADE LOUVERS /
 30CM WIDE - 26CM APART
 0% SUMMER SUN @ NOON
 25% SUMMER SUN @ 8AM
 0% SPRING SUN @ NOON
 25% WINTER SUN @ NOON

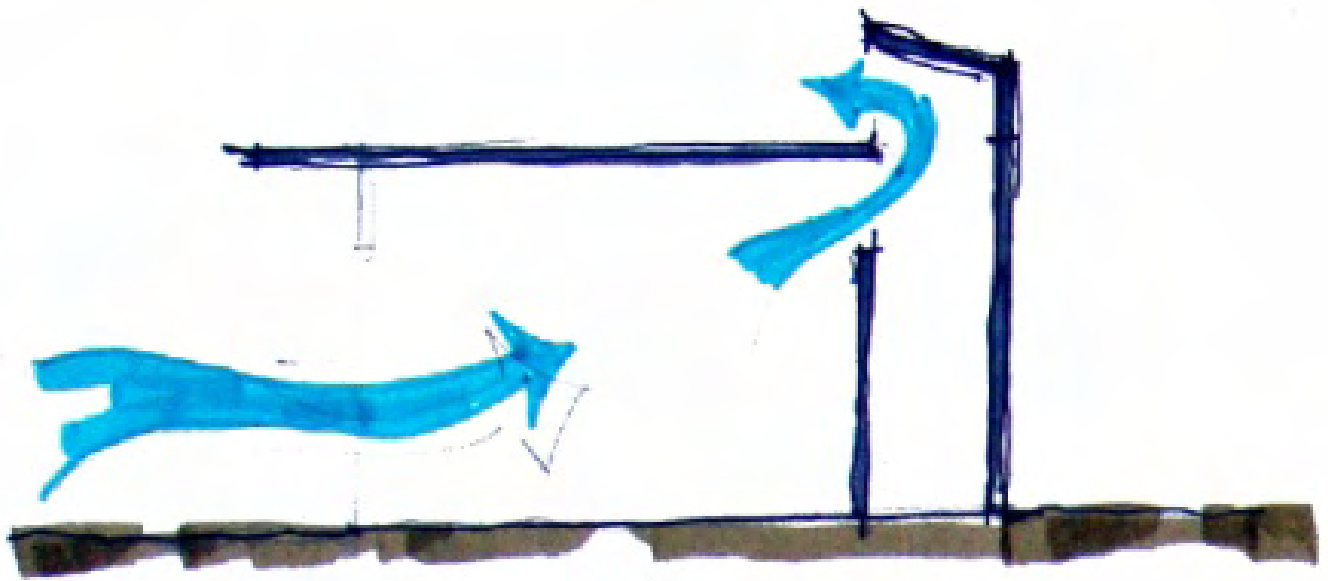
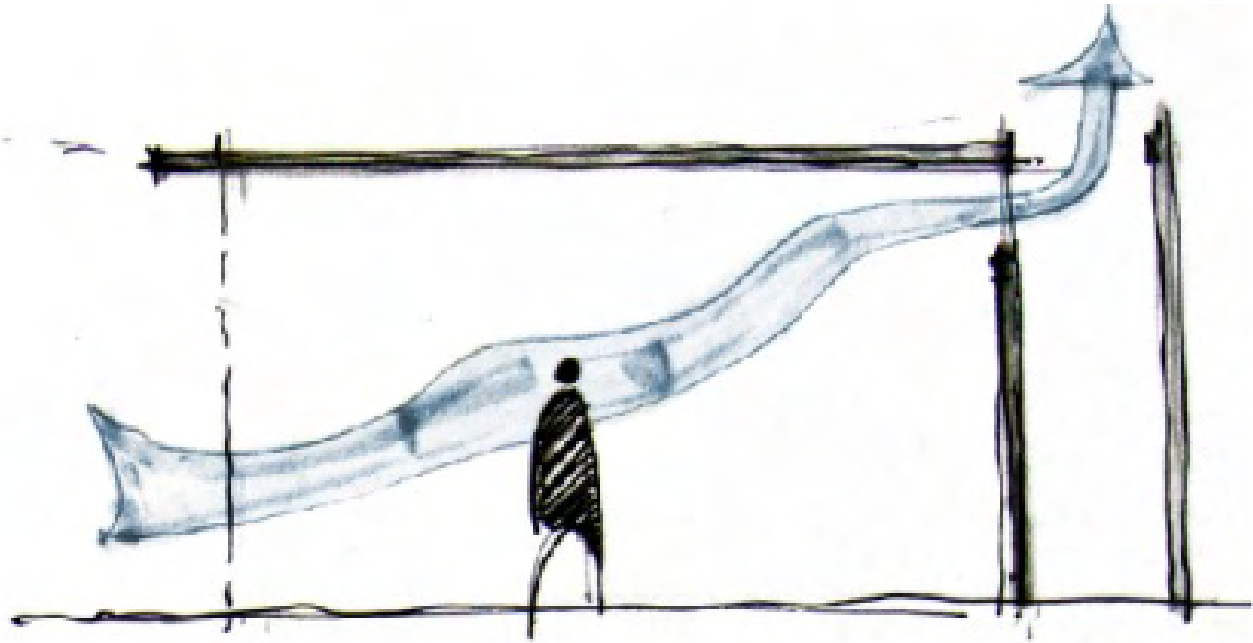


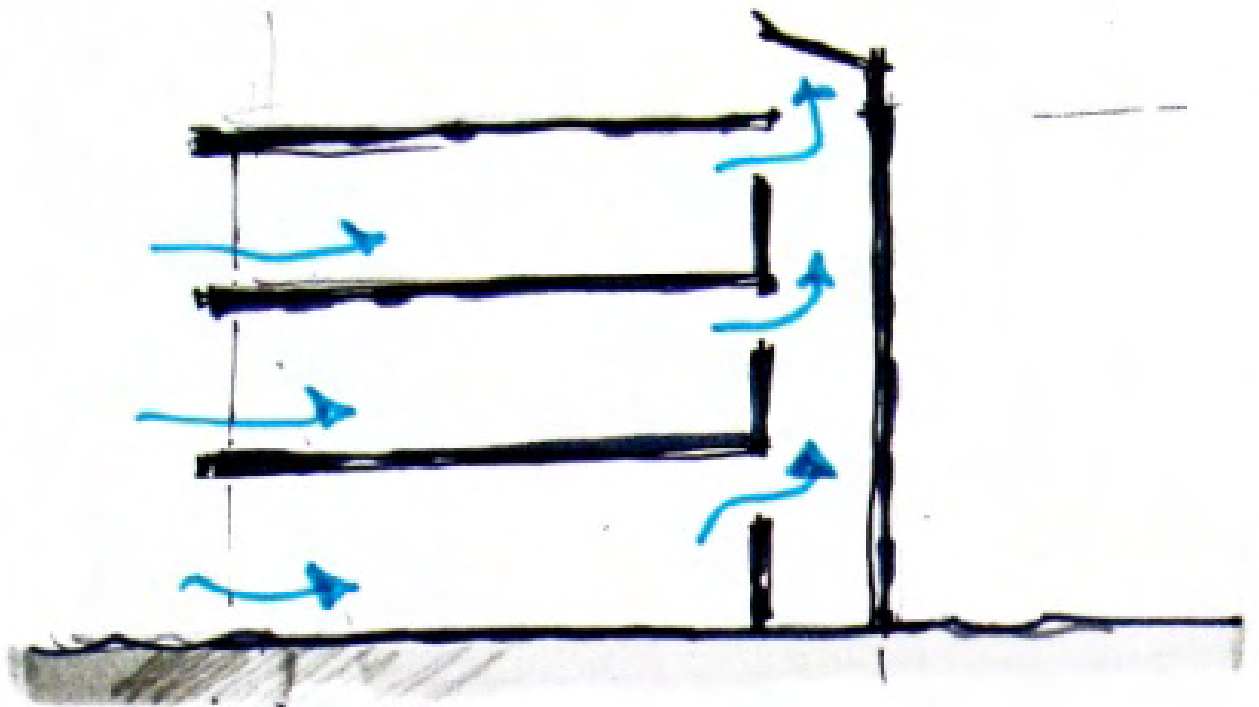
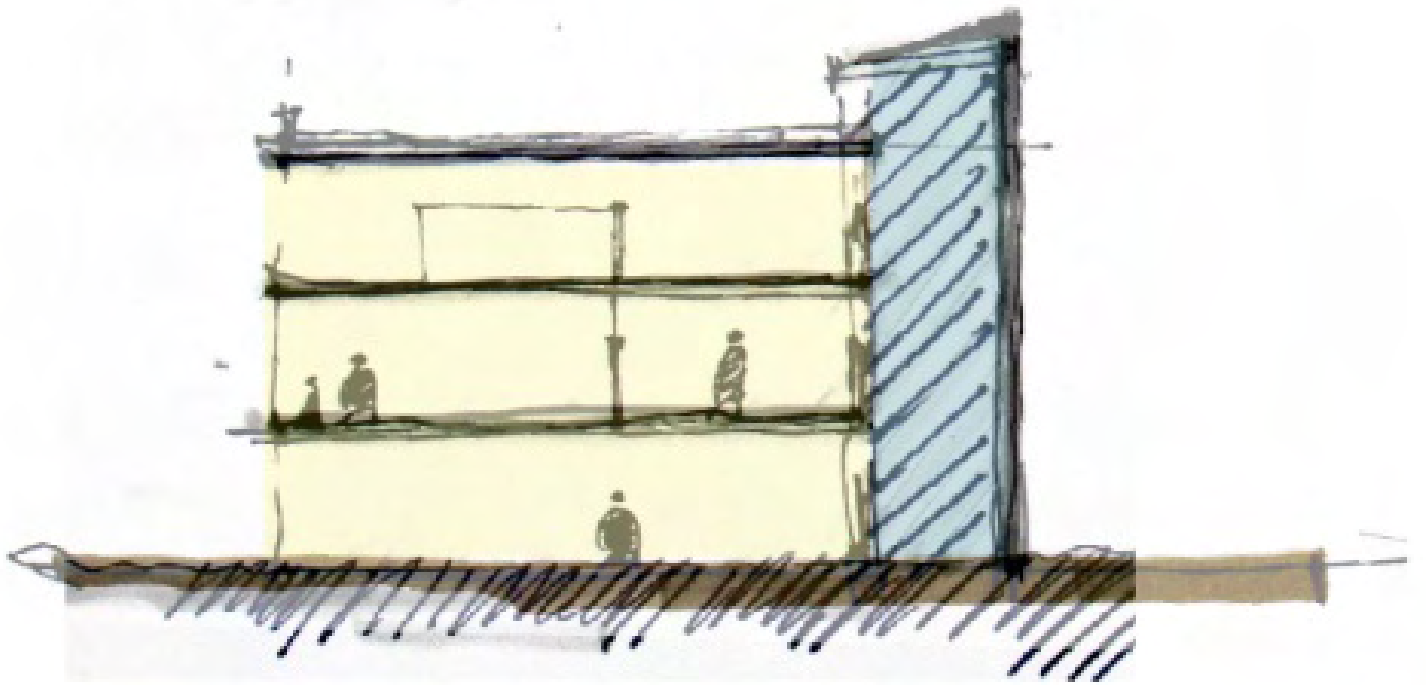
FIXED FACADE LOUVERS /
 26CM WIDE - 26CM APART
 0% SUMMER SUN @ NOON
 25% SUMMER SUN @ 8AM
 0% SPRING SUN @ NOON
 50% WINTER SUN @ NOON

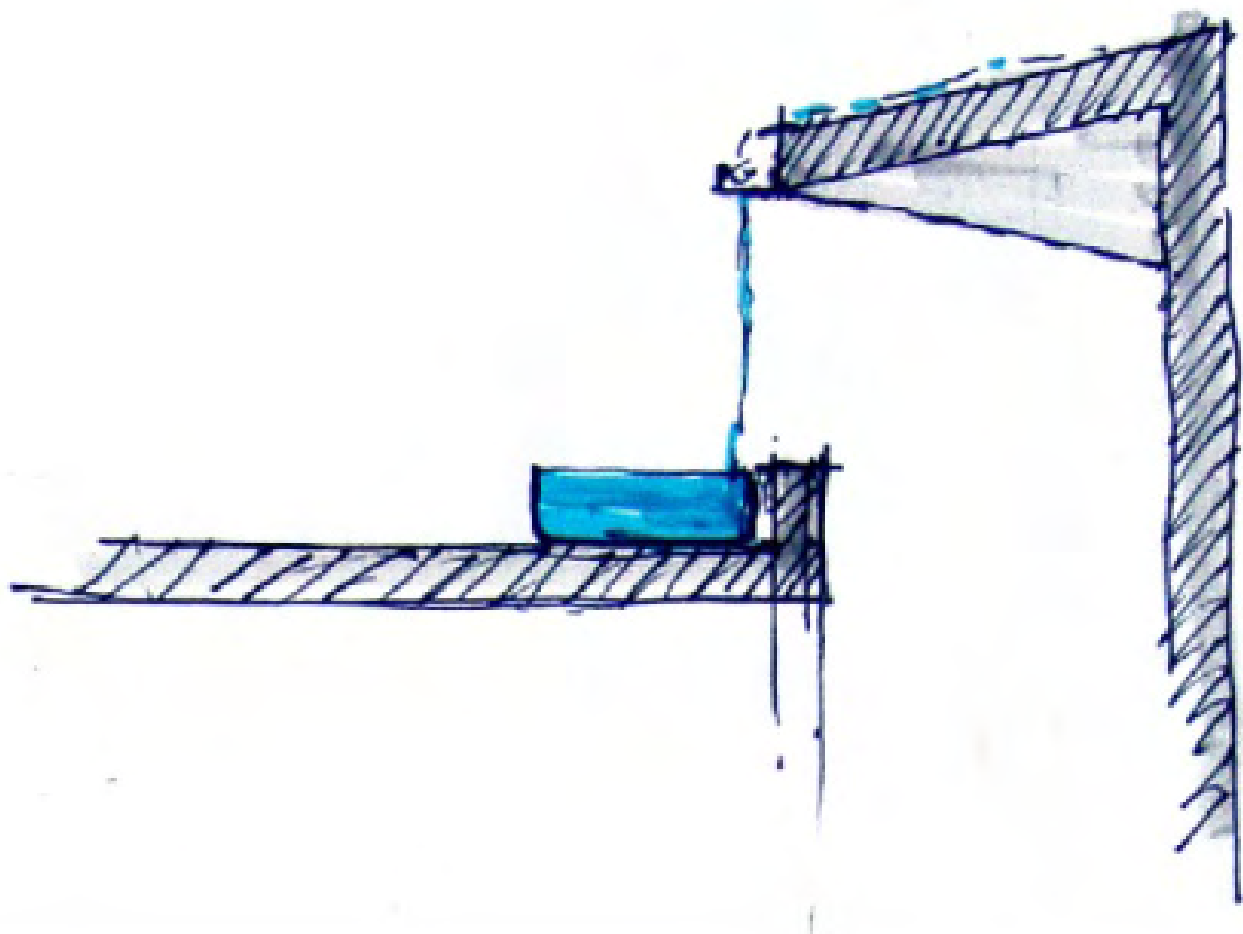


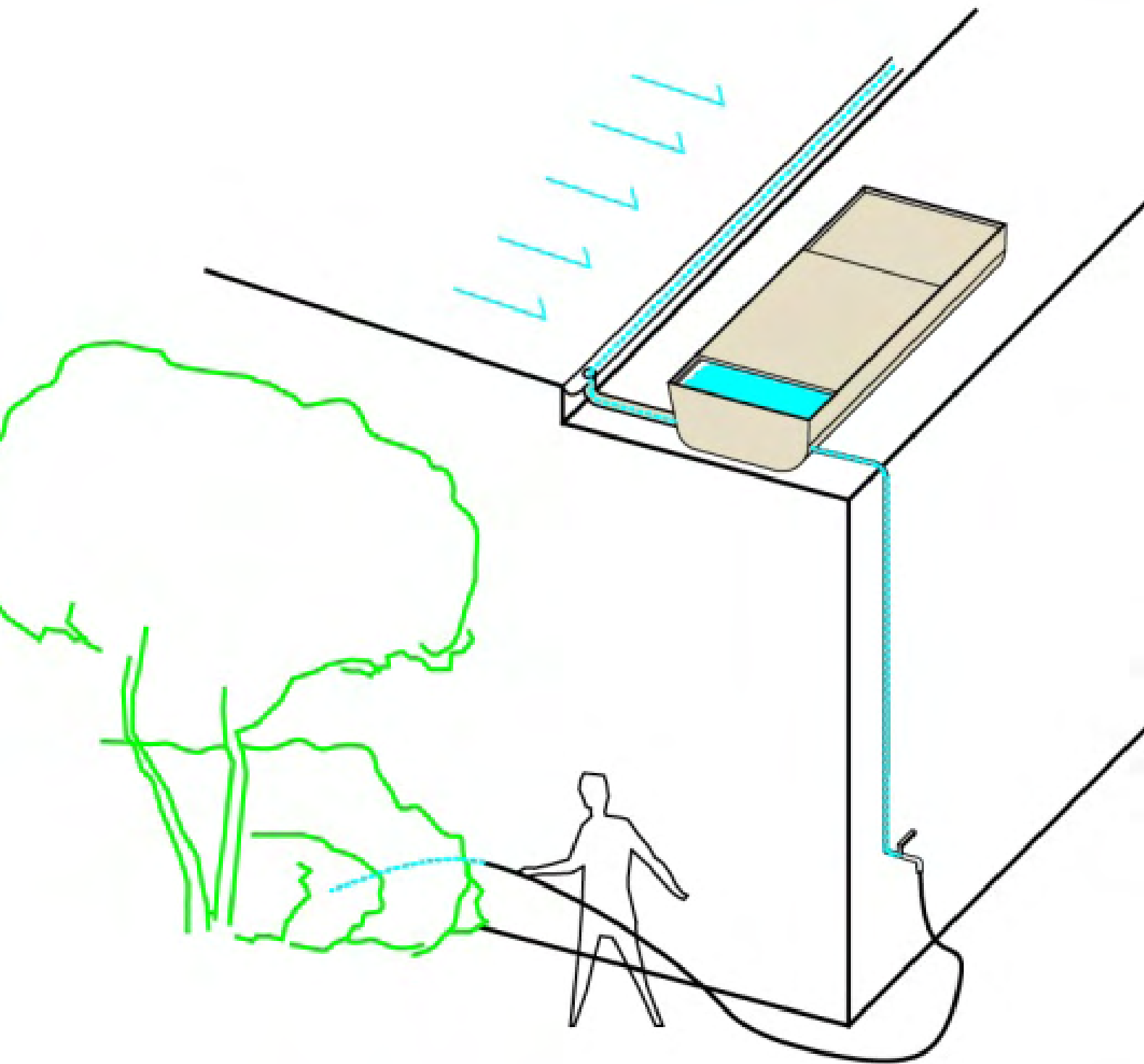
1M HORIZONTAL SHADE +
 1M VERTICAL LOUVERS /
 30CM WIDE - 26CM APART
 0% SUMMER SUN @ NOON
 25% SUMMER SUN @ 8AM
 0% SPRING SUN @ NOON
 75% WINTER SUN @ NOON

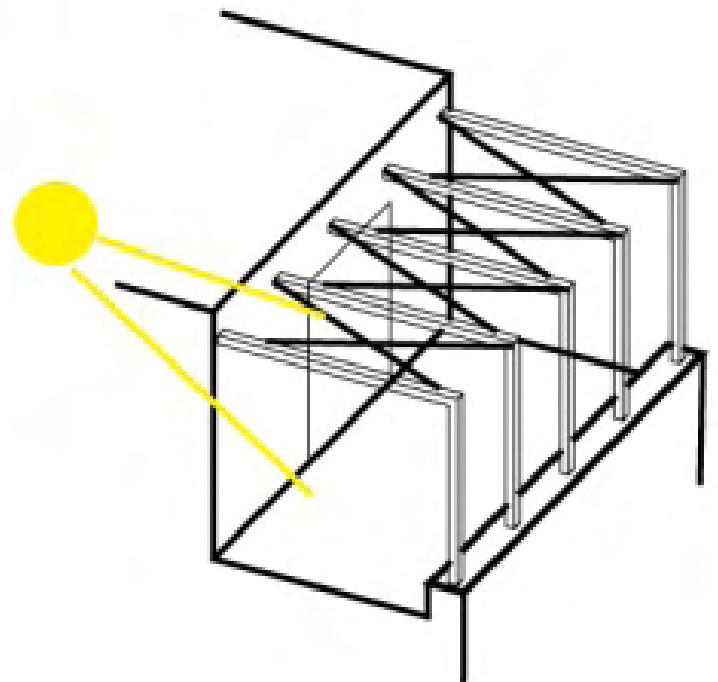
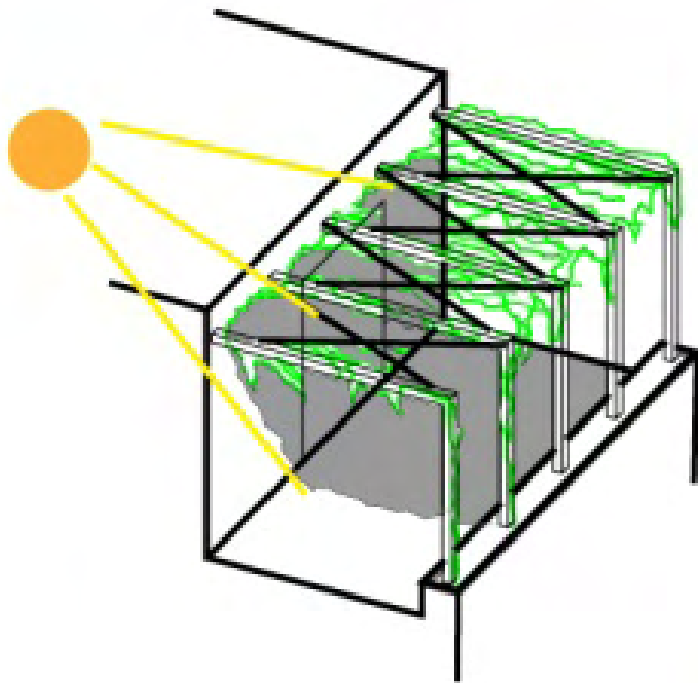




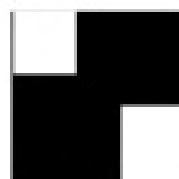
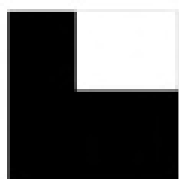
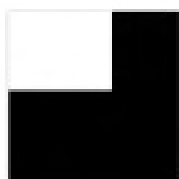
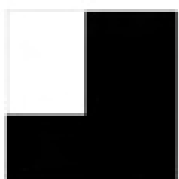
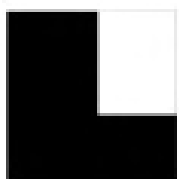
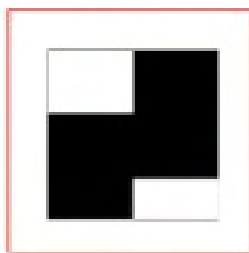
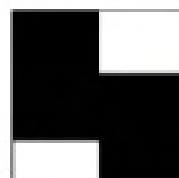
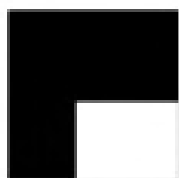
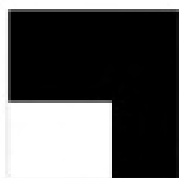
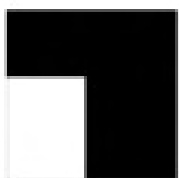
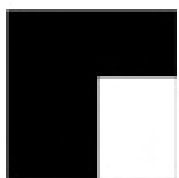
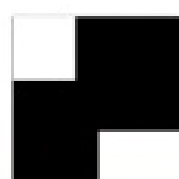
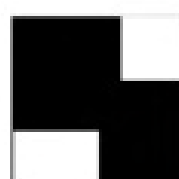
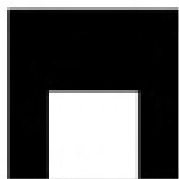
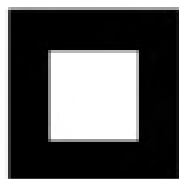
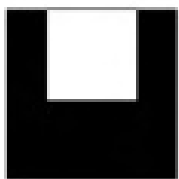
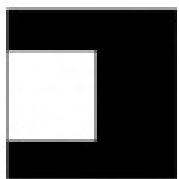
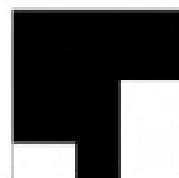
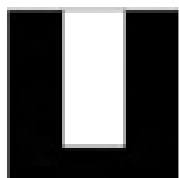
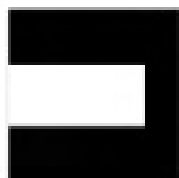
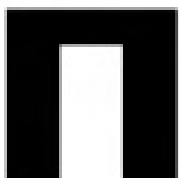
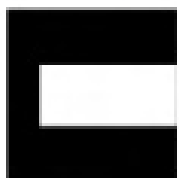
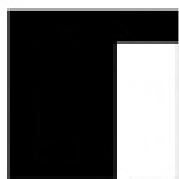
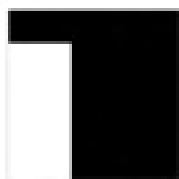
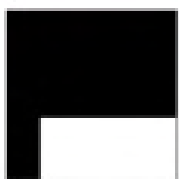
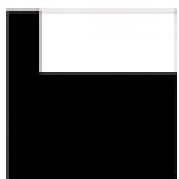
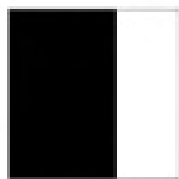
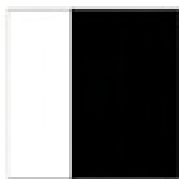
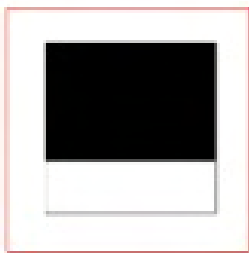
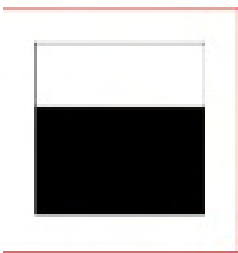


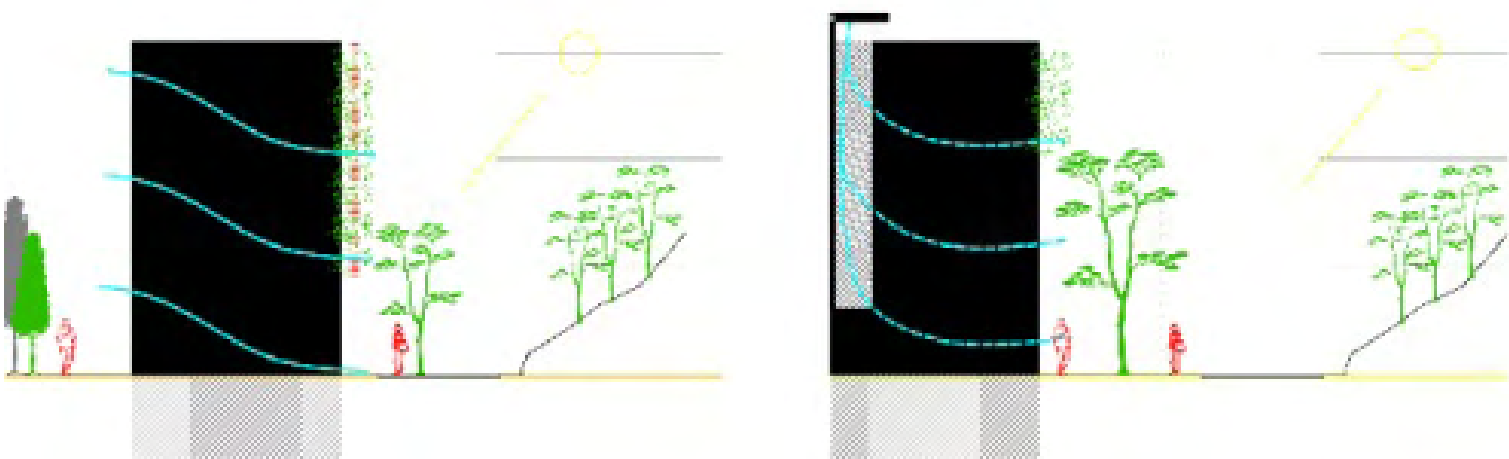
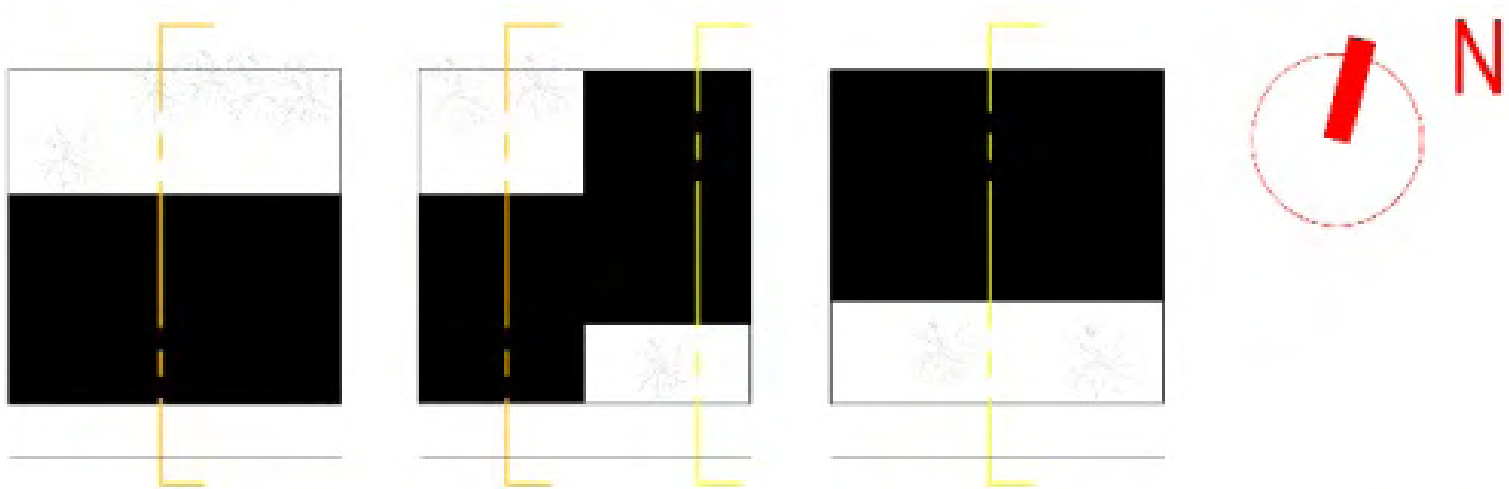






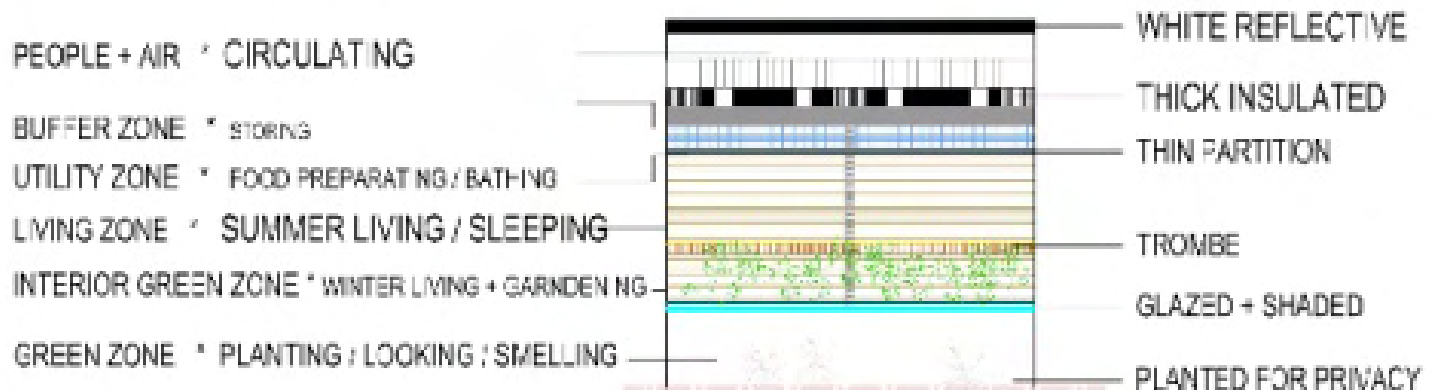
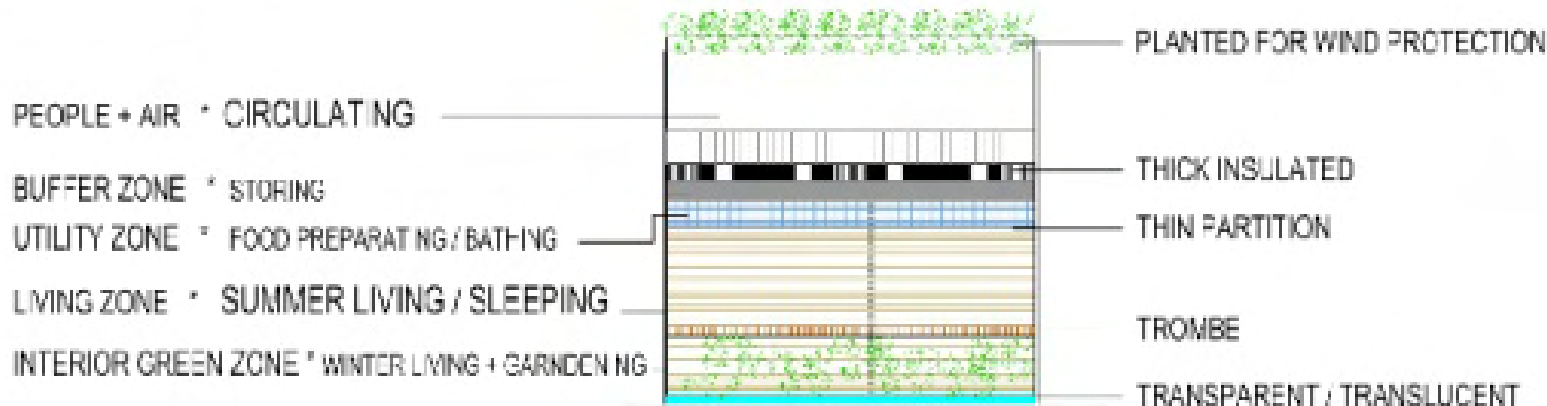
EXPERIMENTAL FORMS





ZONES * ACTIVITIES

LAYERED (E-W) WALLS



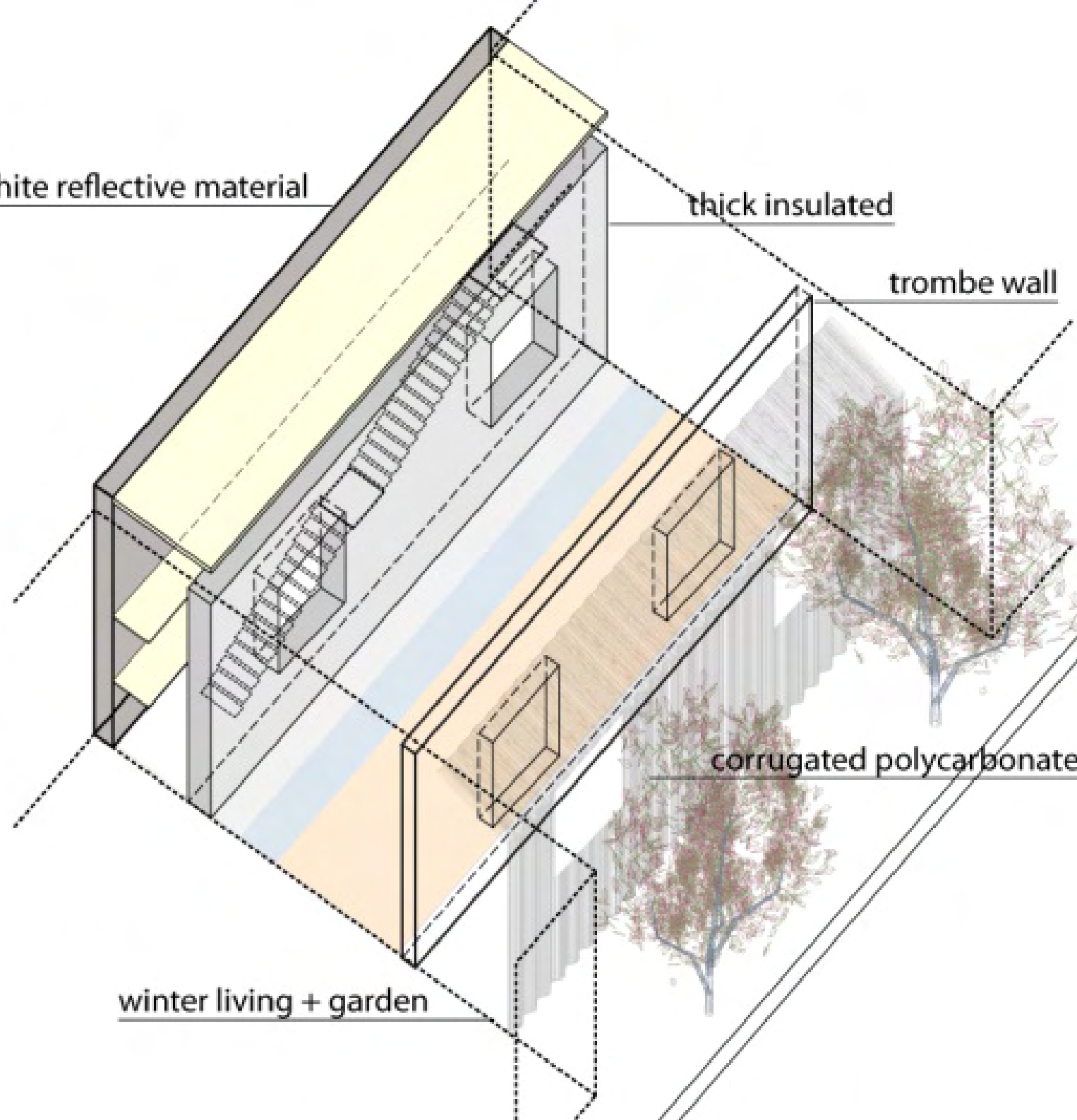
white reflective material

thick insulated

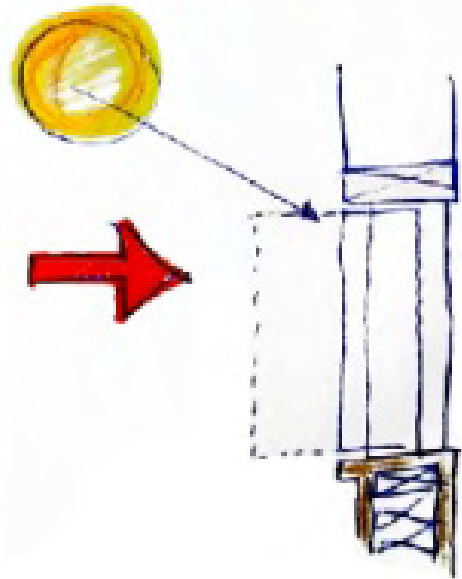
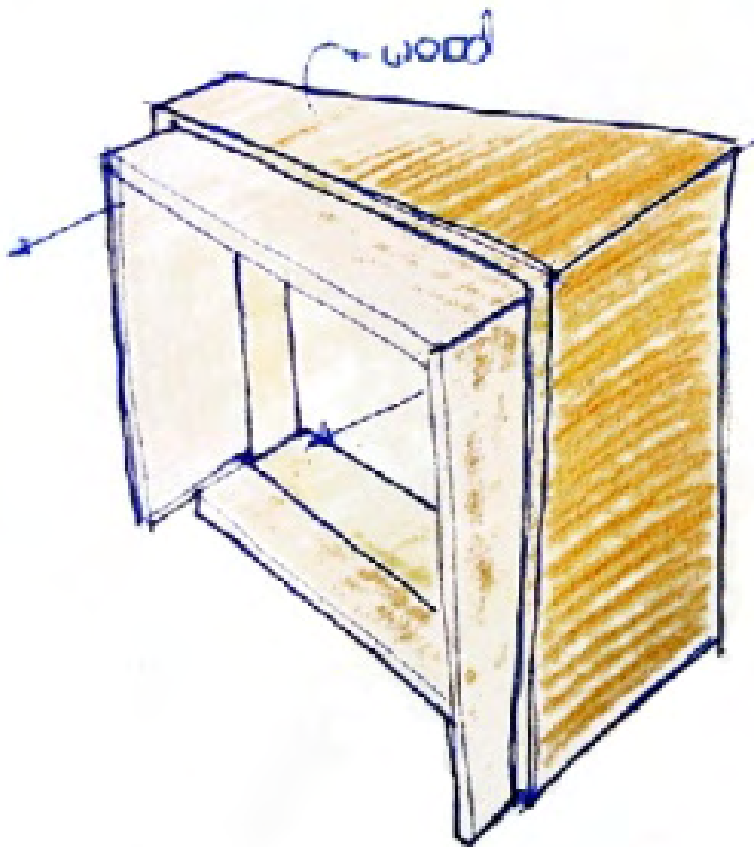
trombe wall

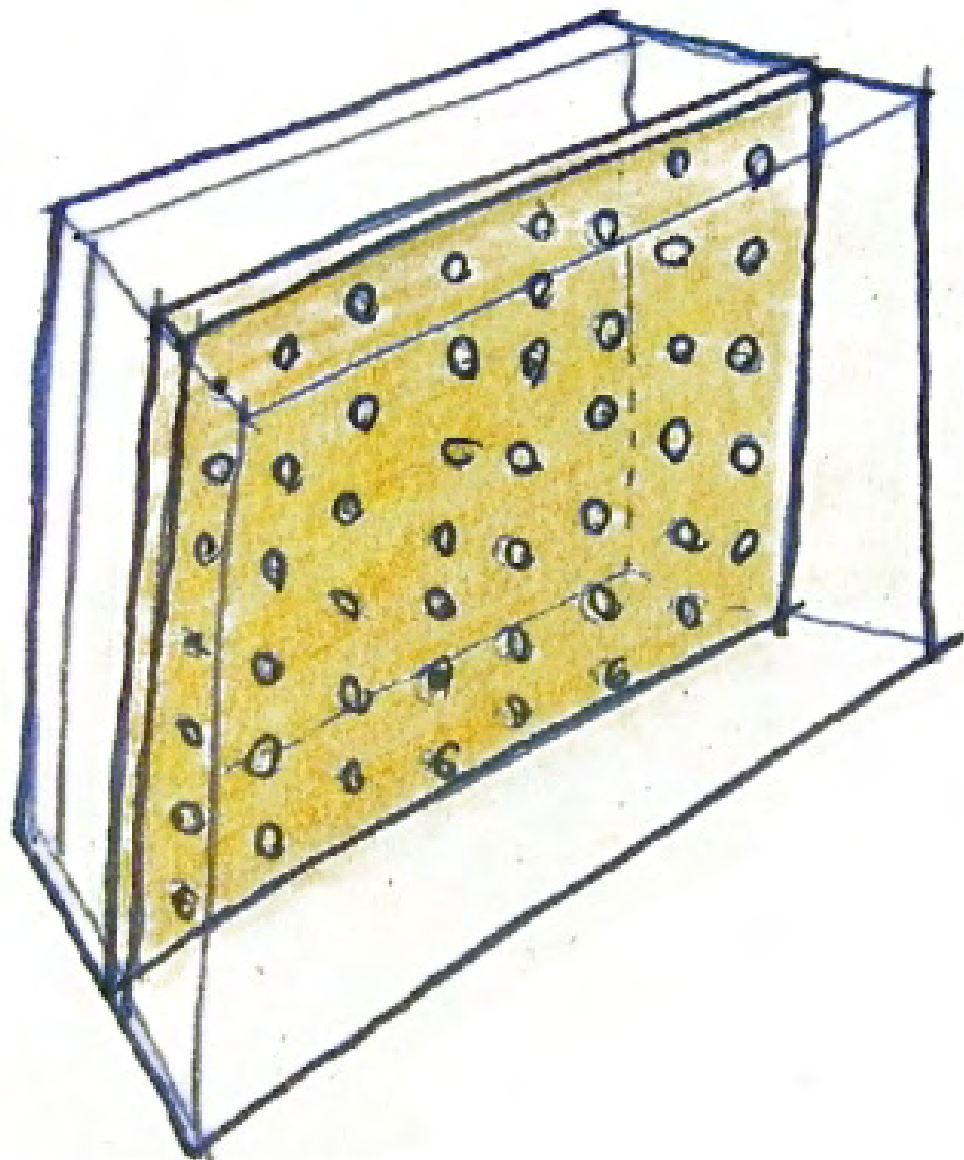
corrugated polycarbonate

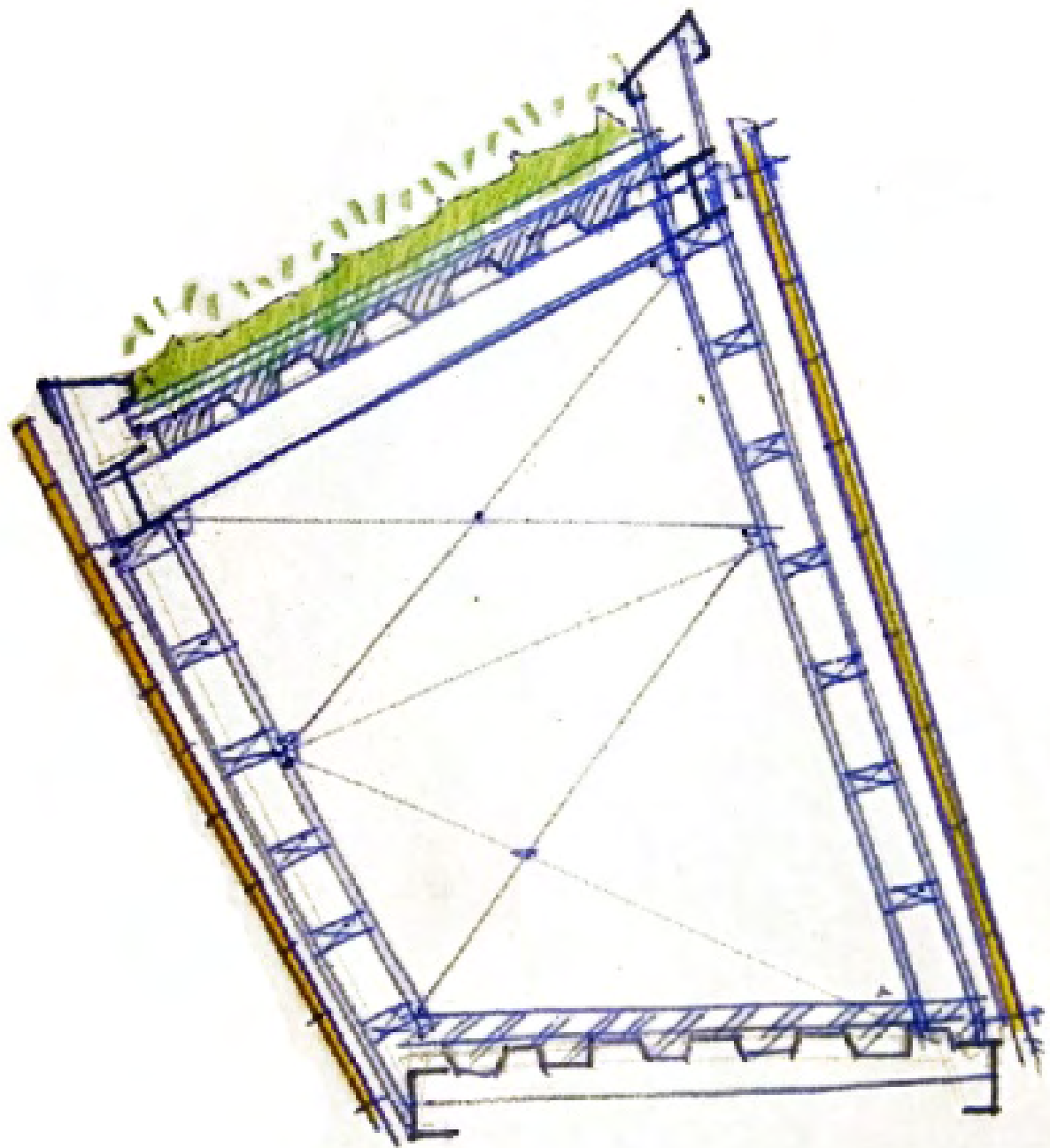
winter living + garden

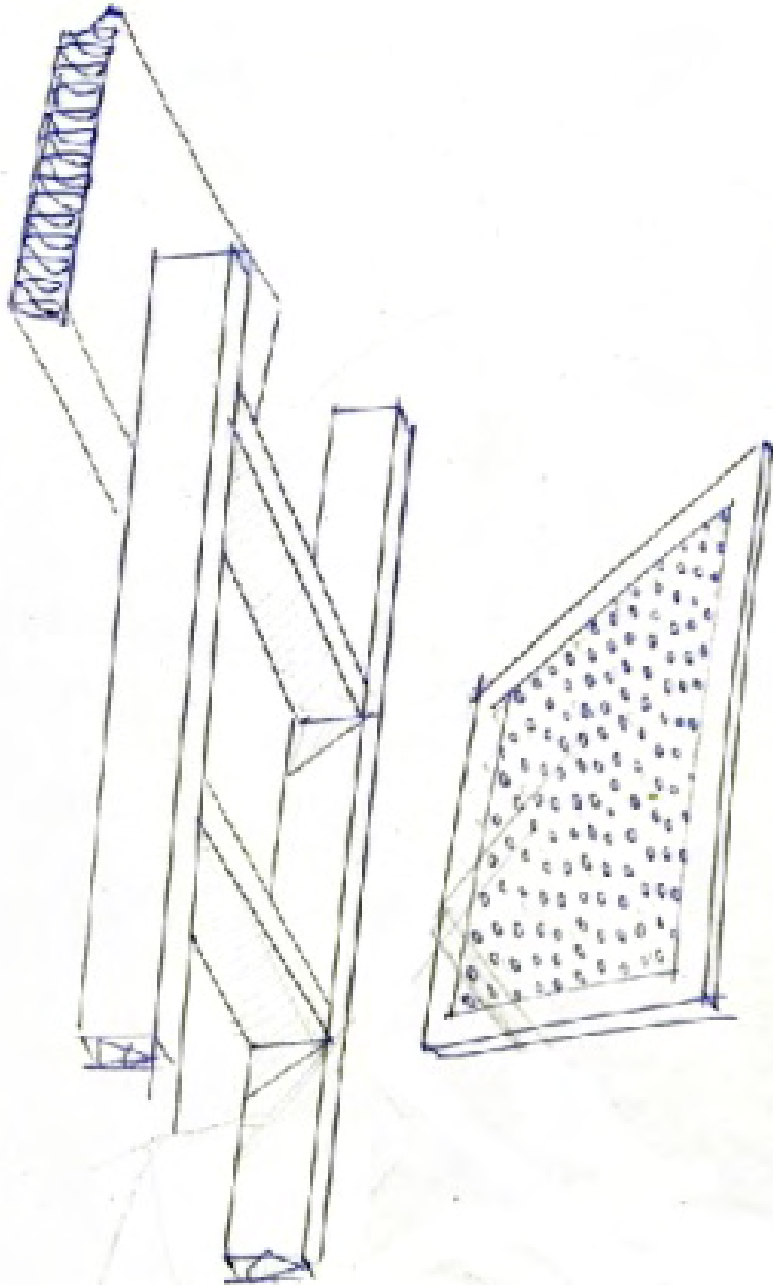


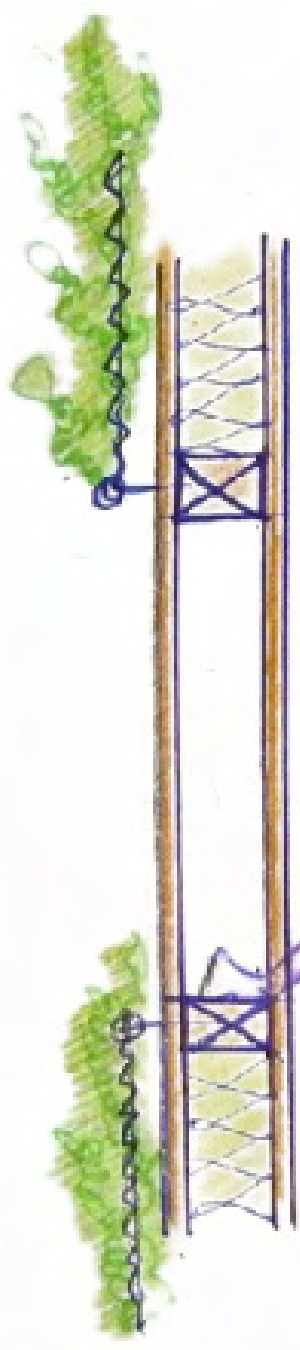










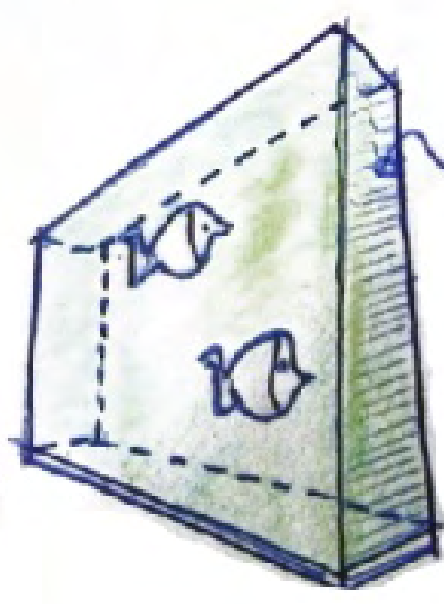


WINDOW

OR / AND



Nash



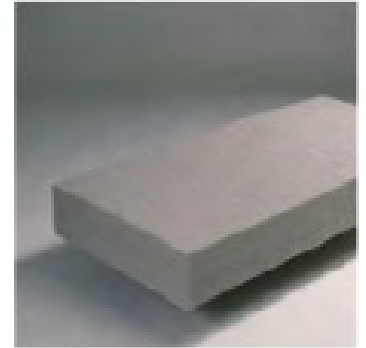
glazing with
water



PLANTED NORTH
WIND BARRIER



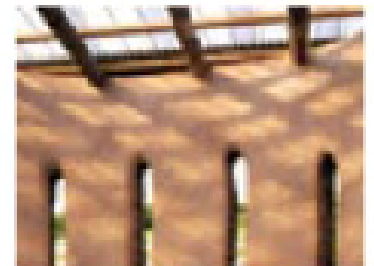
VERTICAL GARDEN



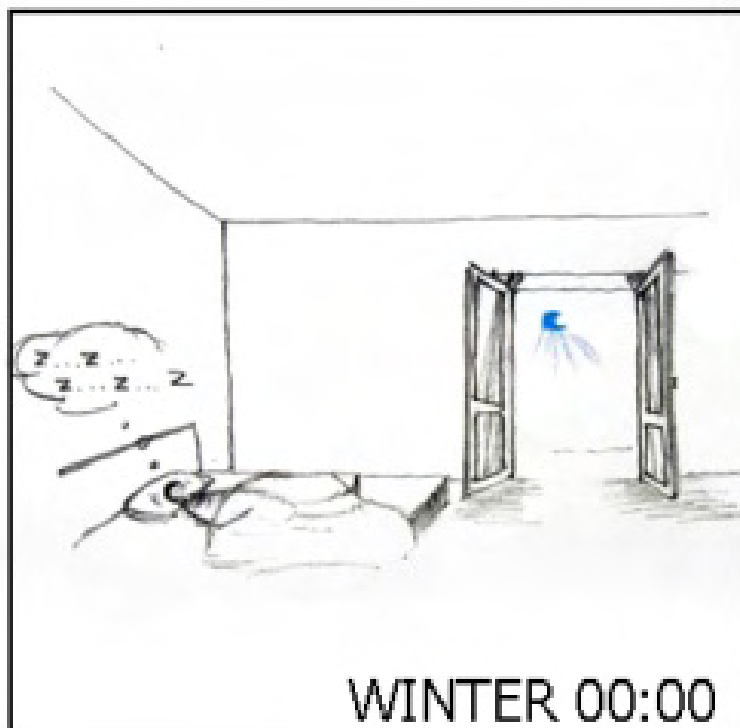
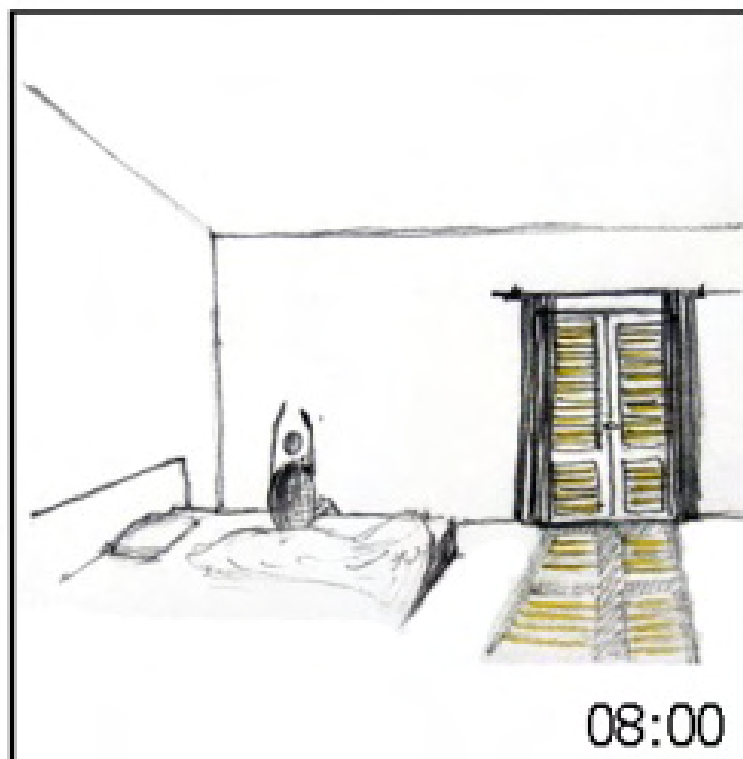
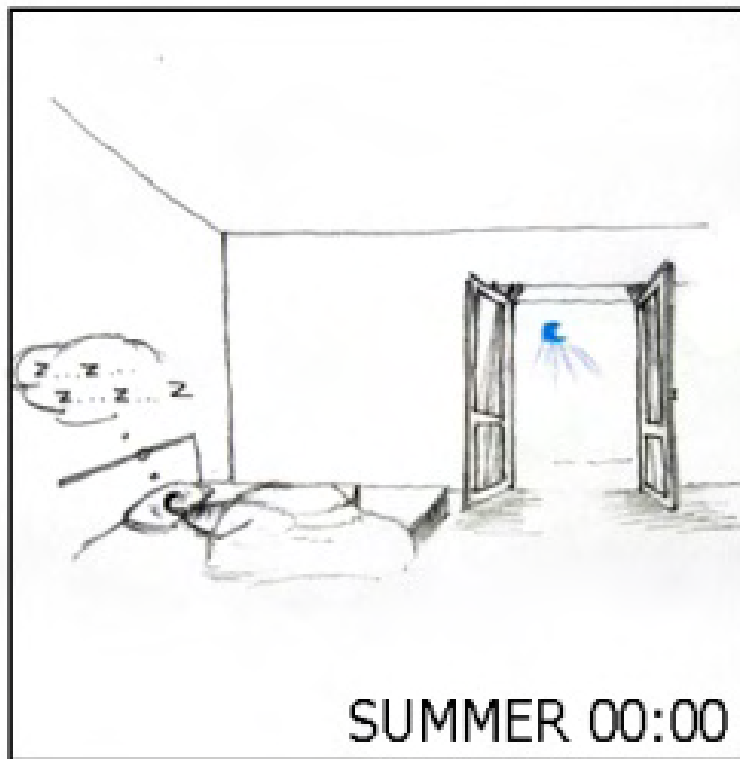
SOLID REFLECTIVE
NORTH WALL

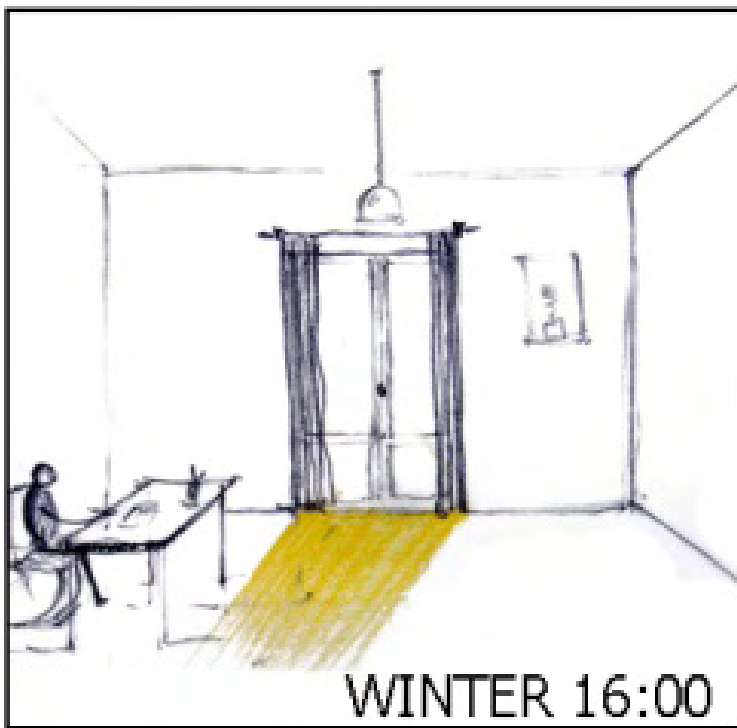


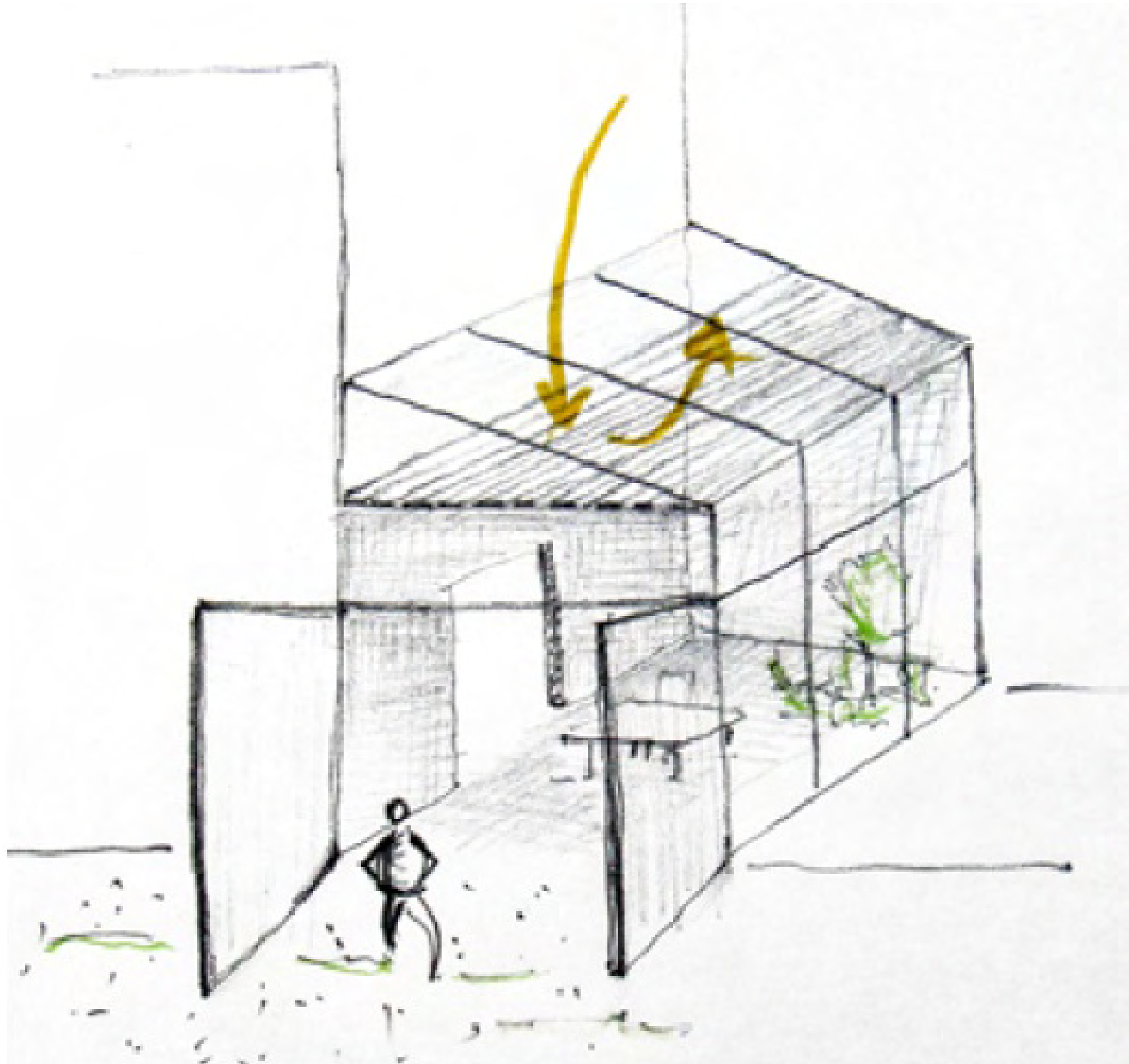
WATER TROMBE WALL



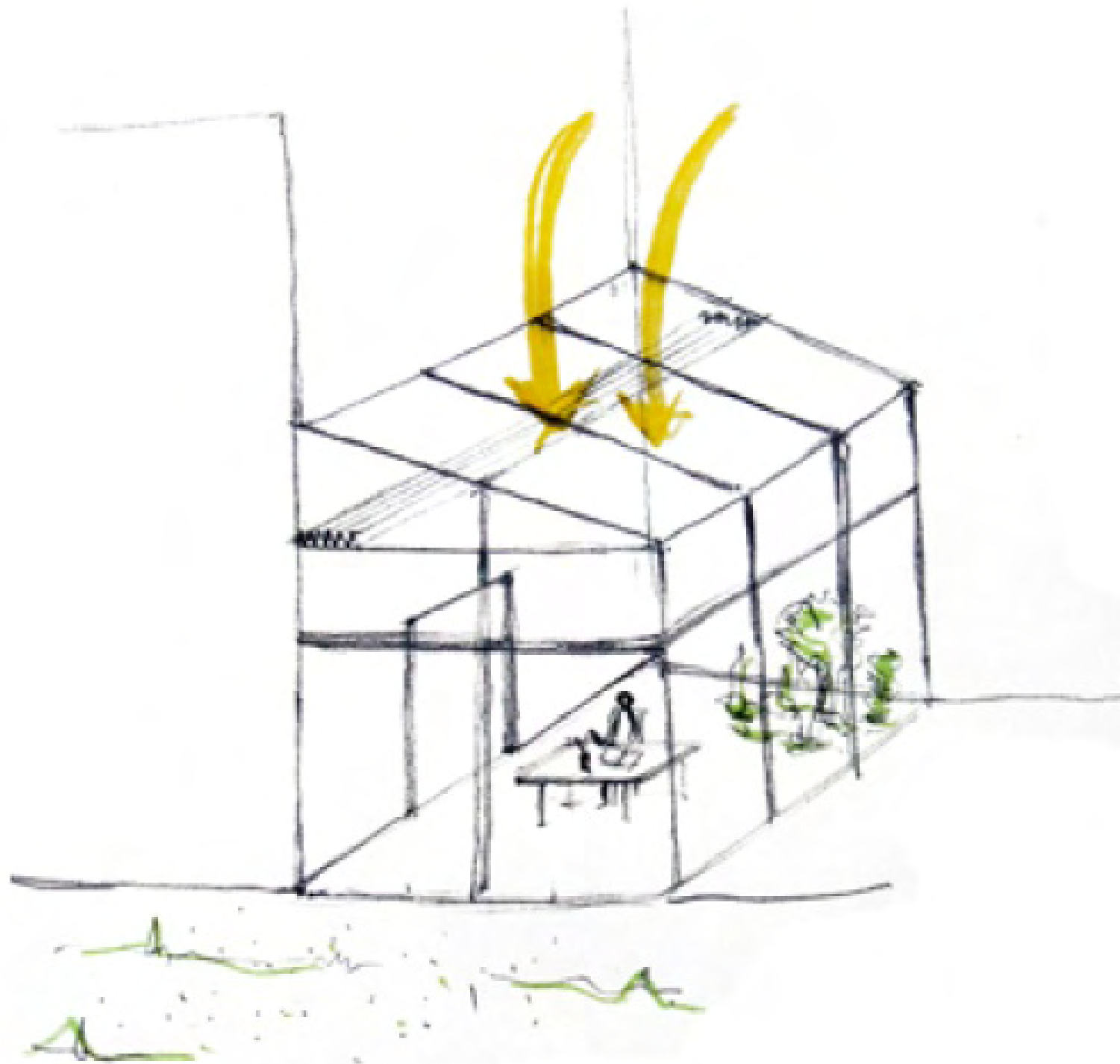
**THE MANUAL:
HOW TO USE
A SUSTAINABLE HOUSE**



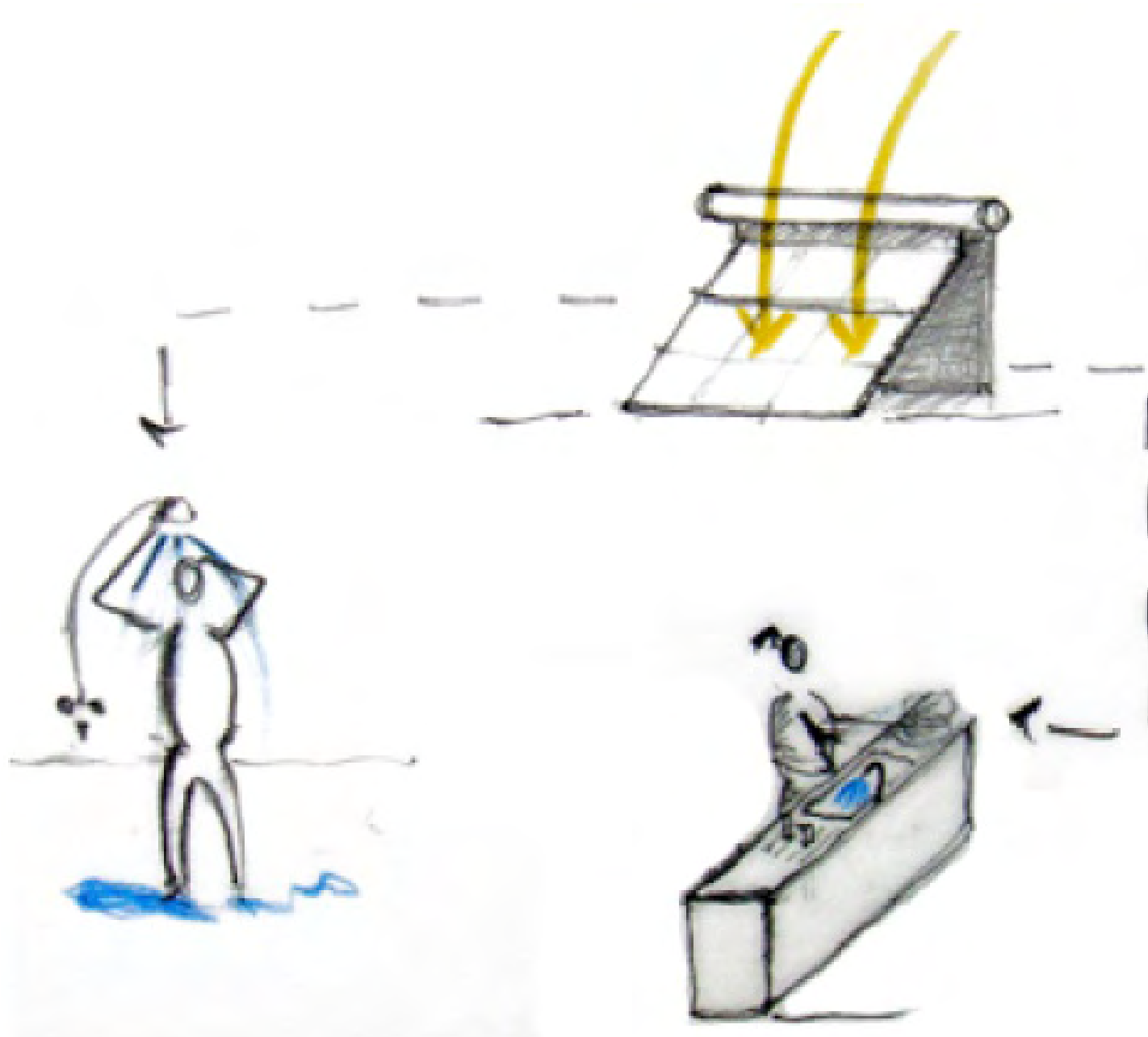


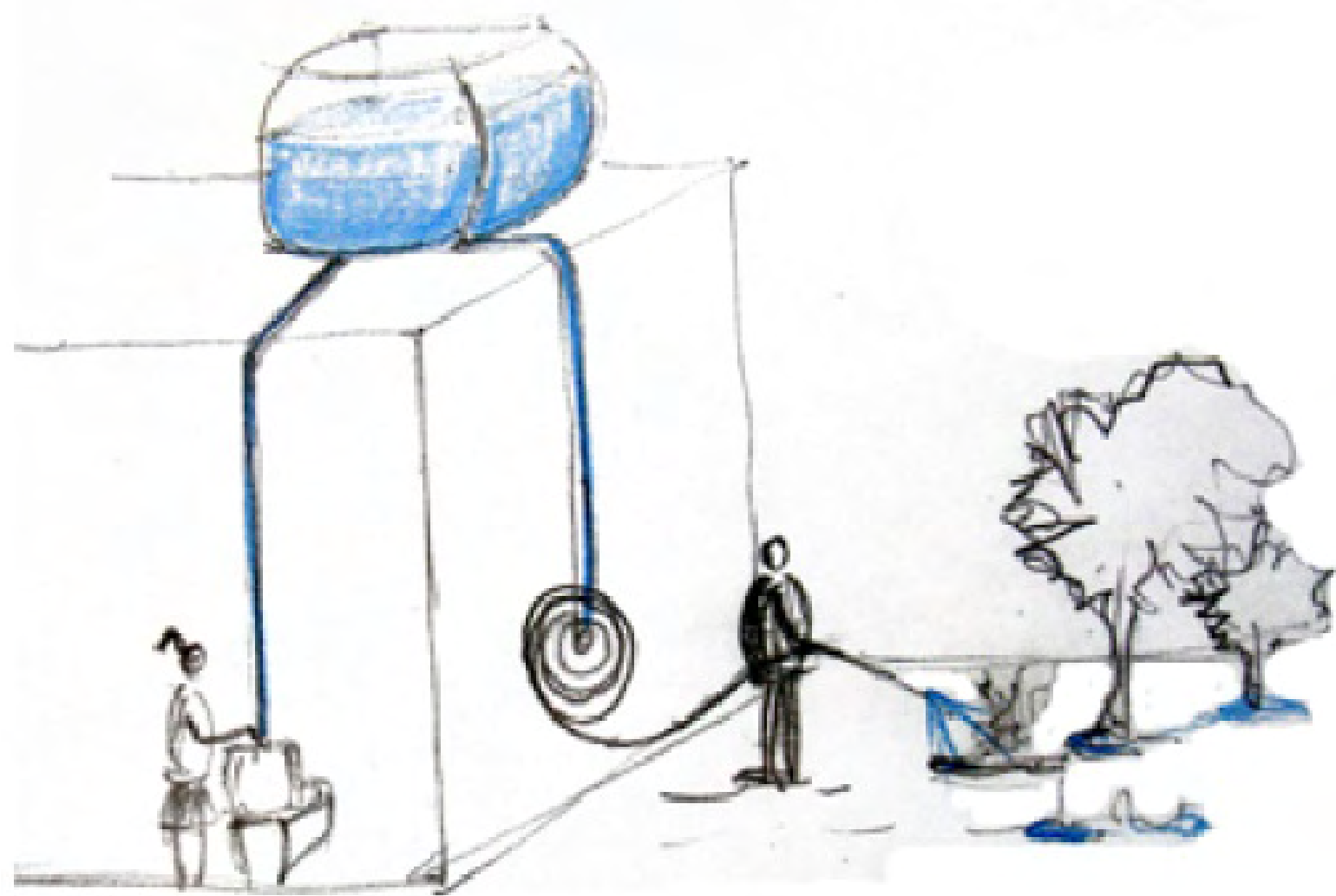


SUMMER



WINTER





HOUSE ---> PROTOTYPE ?

TO BE REPRODUCED IN OTHER NEIGHBOURHOODS

FORM ?



DESIGN PRINCIPLES ?



CHANGING HABITS ?



christina voutou

maria doxa

marilena dyrani-maouni

demetris evangelou

ruRAl
studio

efi orfanou

dimitra papageorgiou

katerina kouskoura

thomais siarkou

kostas tsamis

daniel wicke