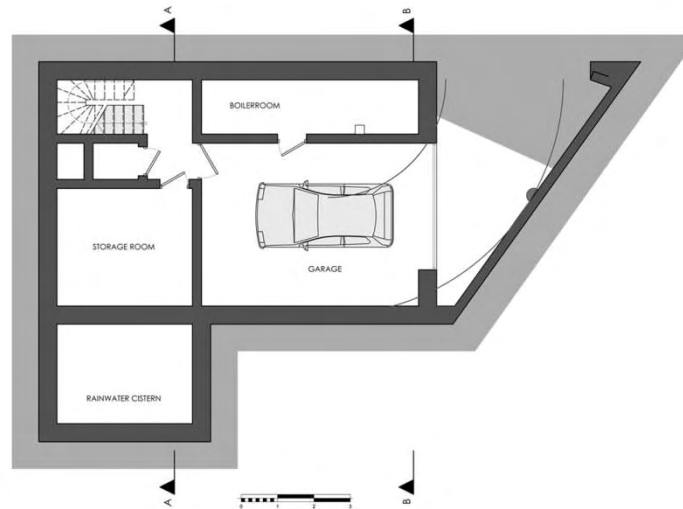


## MASTER PLAN



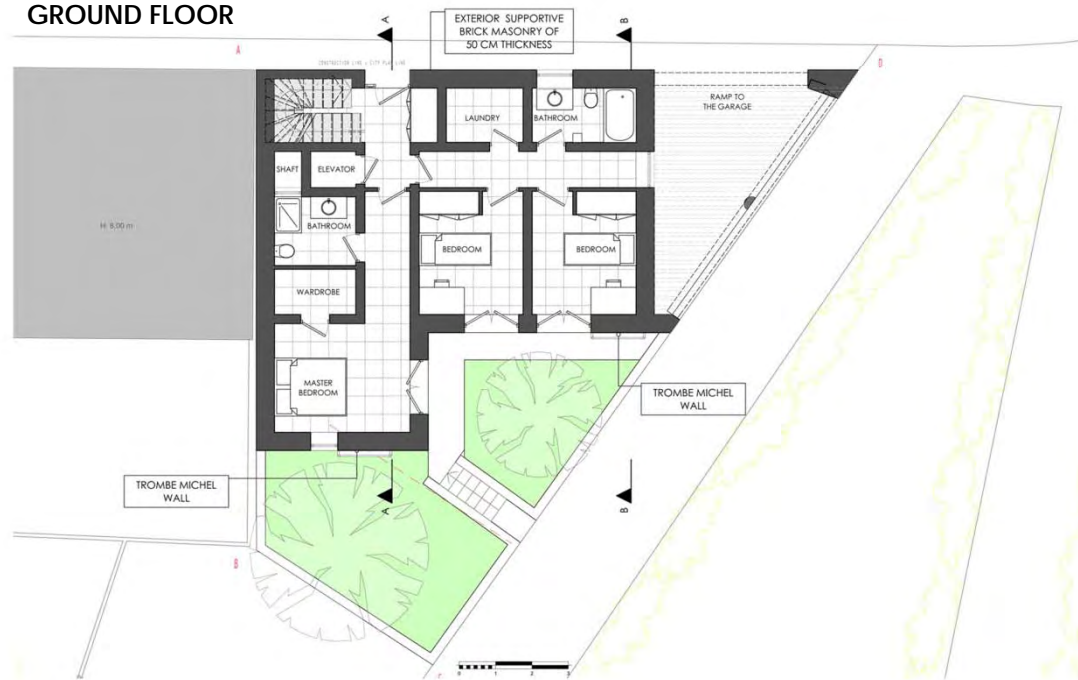
LOUTSIA AREA-PROPOSAL FOR A SUSTAINABLE RESIDENSE

## BASEMENT



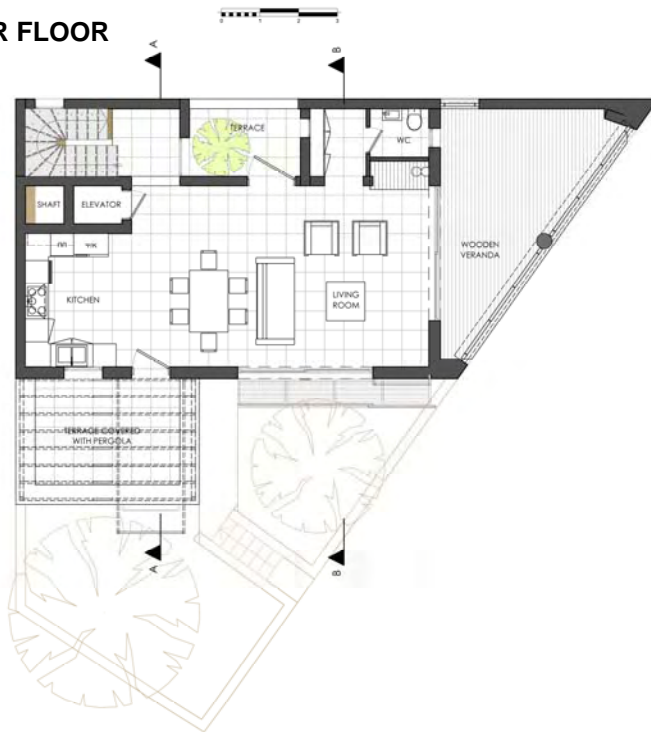
## PLANS

## GROUND FLOOR



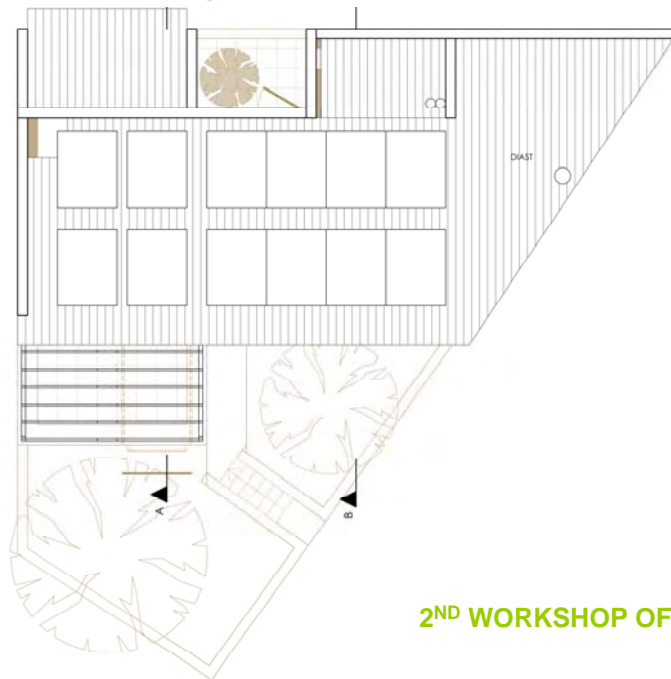
## PLANS

### UPPER FLOOR



VIEW FROM THE LIVING-ROOM

### ROOF

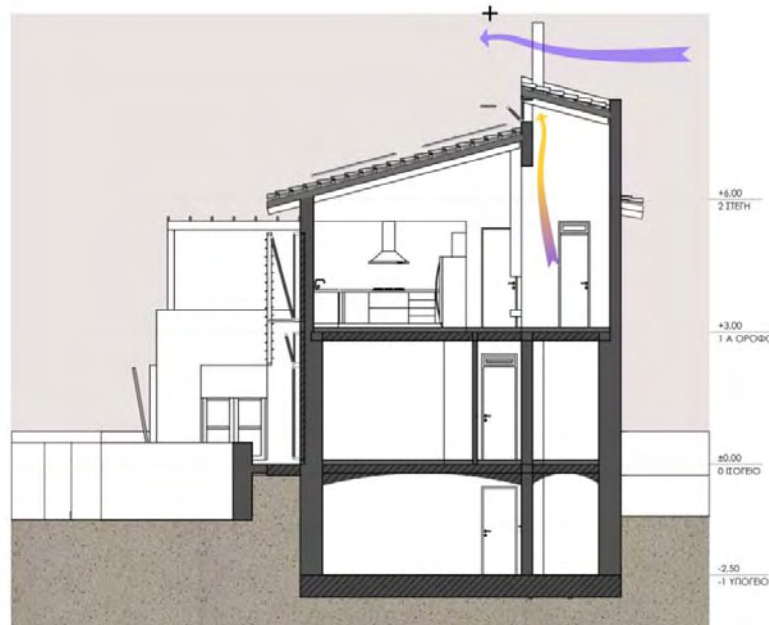


## SECTIONS

SECTION A-A



SECTION B-B





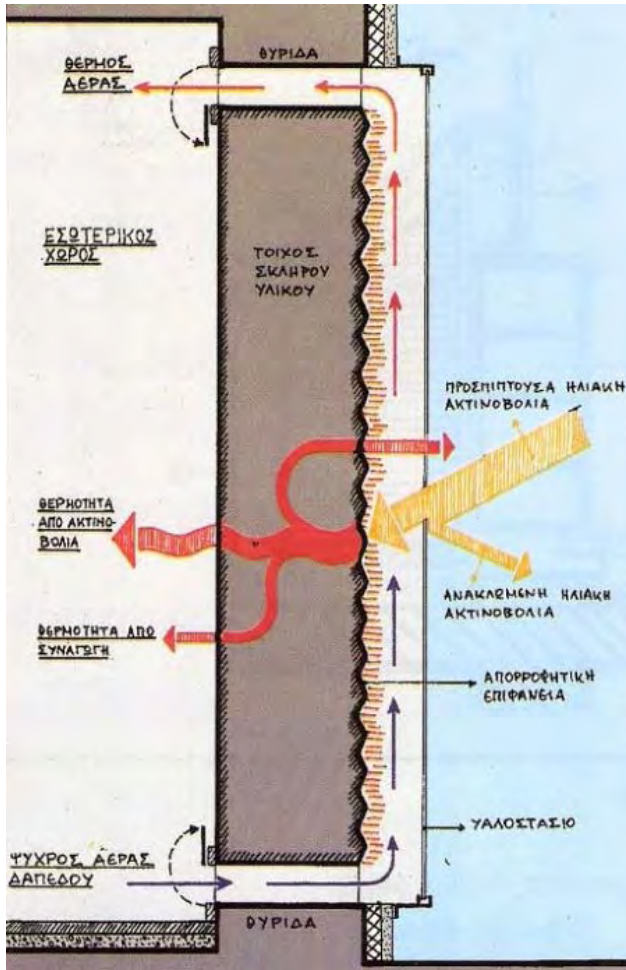
## ELEVATIONS



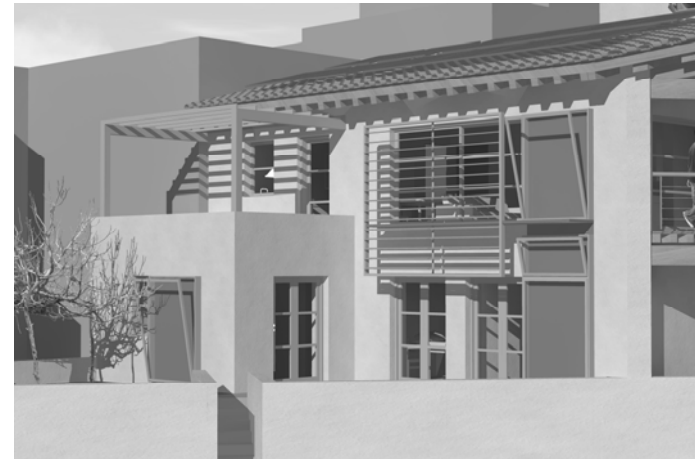
## ELEVATIONS



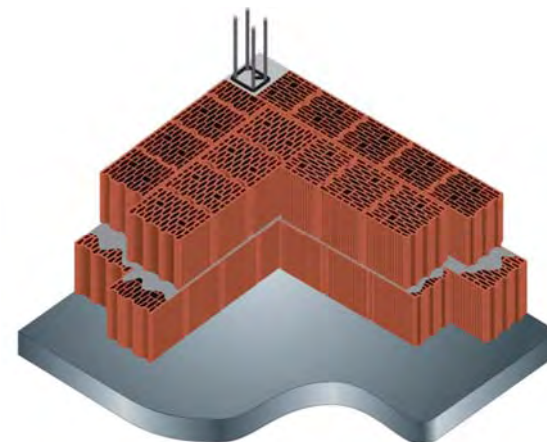
PASSIVE SYSTEM-MATERIALS



TYPICAL SECTION OF TROMBE MICHEL WALL

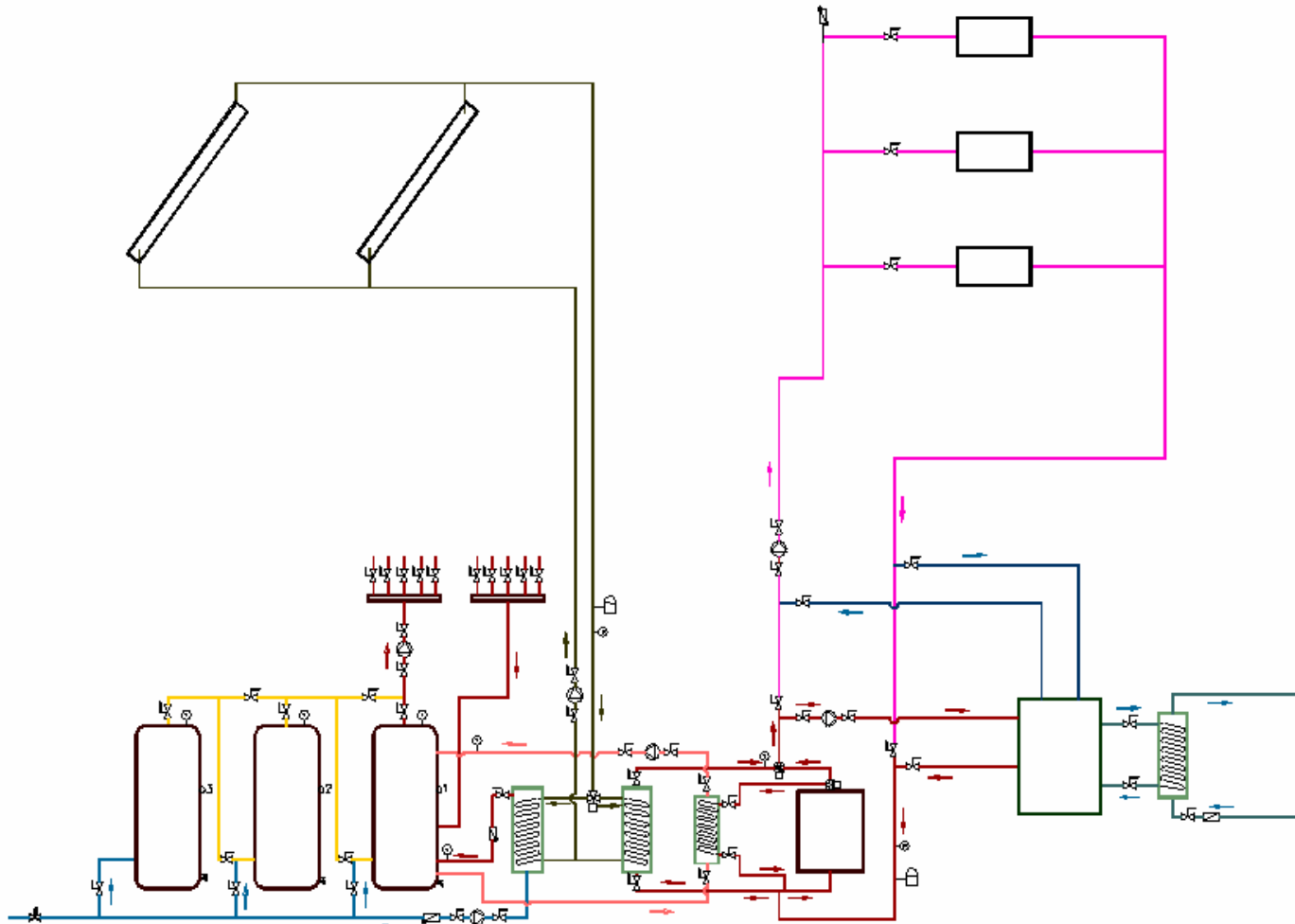


DETAIL OF PASSIVE SYSTEMS



DOUBLE BRICK SUPPORTIVE MASONRY

## ACTIVE SYSTEM



HOT WATER: CENTRAL SOLAR SYSTEMS



SOUTH-EAST PERSPECTIVE  
DECEMBER



VIEW A

SOUTH-EAST PERSPECTIVE  
JUNE



VIEW B



VIEW C