

Φ | E | i t  *creative recycling*

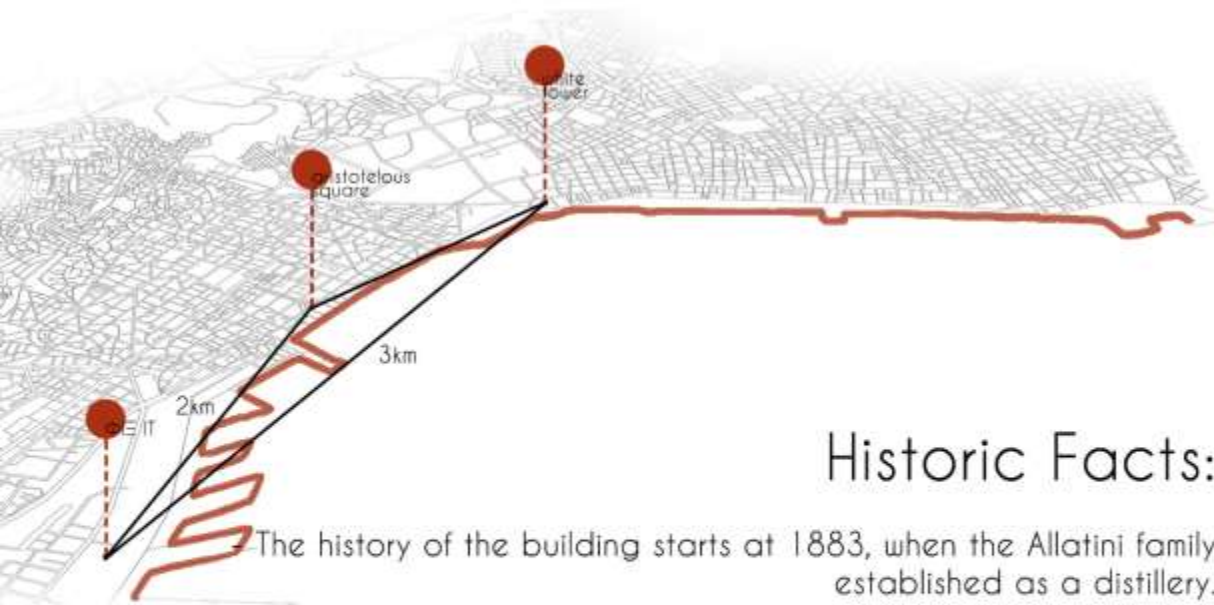
W6

**Workshop Leader**

Ulf Meyer

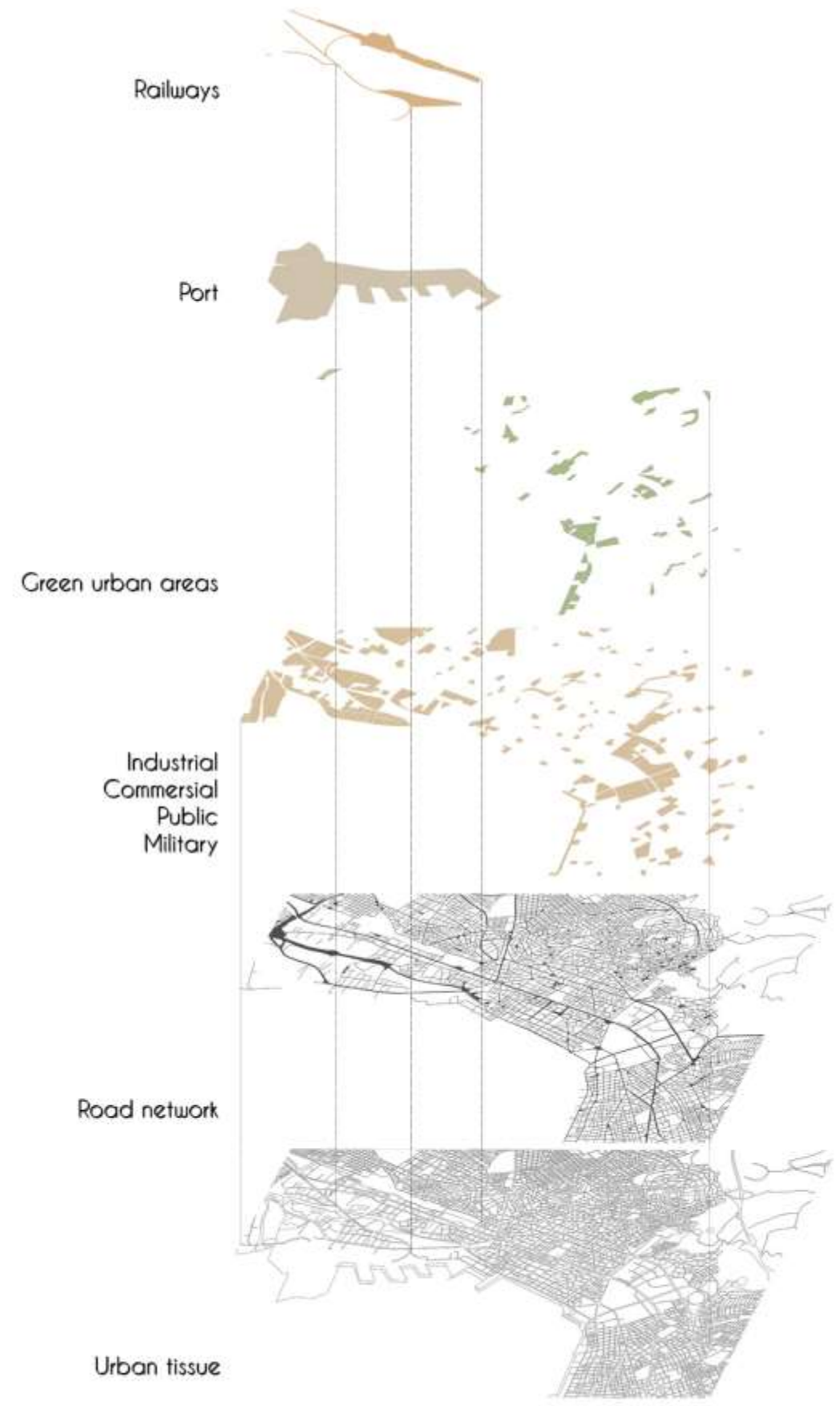
**Participants**

Eleni-Vasiliki Alexi, Elissavet Chamou, Foivos De Brito Karagiorgas, Paraskevi Kolokytha, Maria Lakoumenta, Elena Lazarina, Margarita Micho, Eleni Oikonomaki, Marianna Papastamatiou, Marinos Skouras, Angeliki Stakia, Maria-Alexia Styliou, Dimitra Tsagkari



## Historic Facts:

- The history of the building starts at 1883, when the Allatini family established as a distillery.
- The building becomes a brewery at 1892.
- The historical industrial block "Fix", was in the western side of Thessaloniki and was the center of the industrial production in the city.
- Fix beer is the first beer made in Greece.
- The 1980 the business closes.
- It has been declared as a preservable building.



## Goals

- regeneration of Fix area and reconnection with the city.
- promotion of recycling mentality

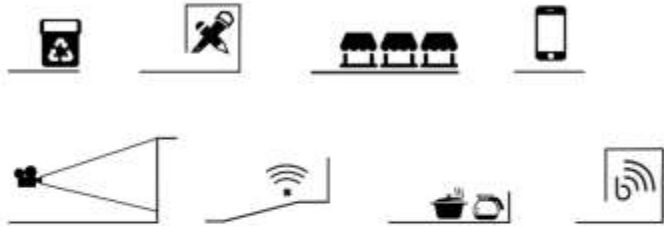
## Key intervention

**ΦΙΞ** it

*creative recycling*

(collection- storage- processing- exhibition/sale- parallel events)

## Tools



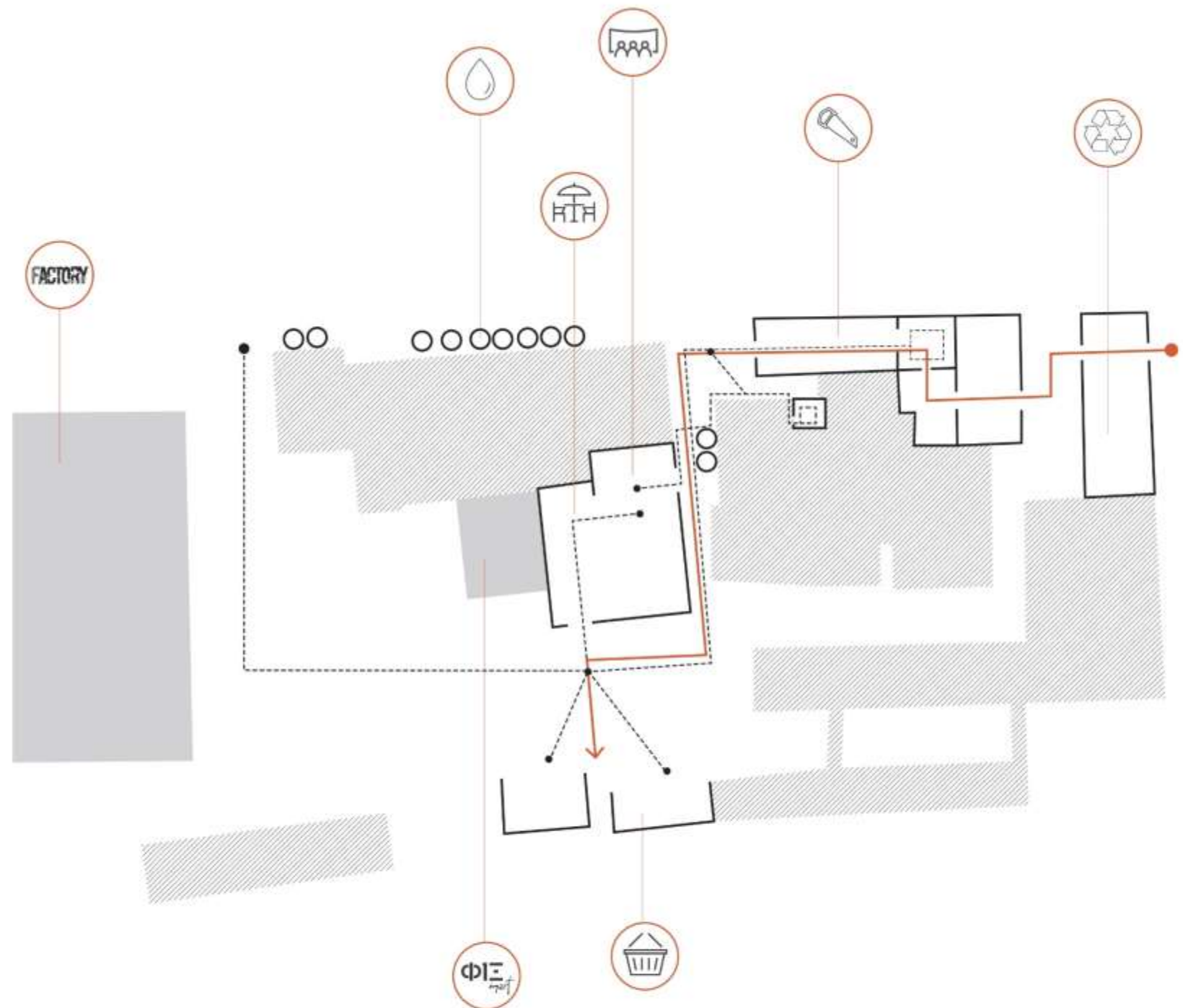
## Groups involved

**ΦΙΞ** εναλλακτικό  
τεχνολογείο  
*it art*

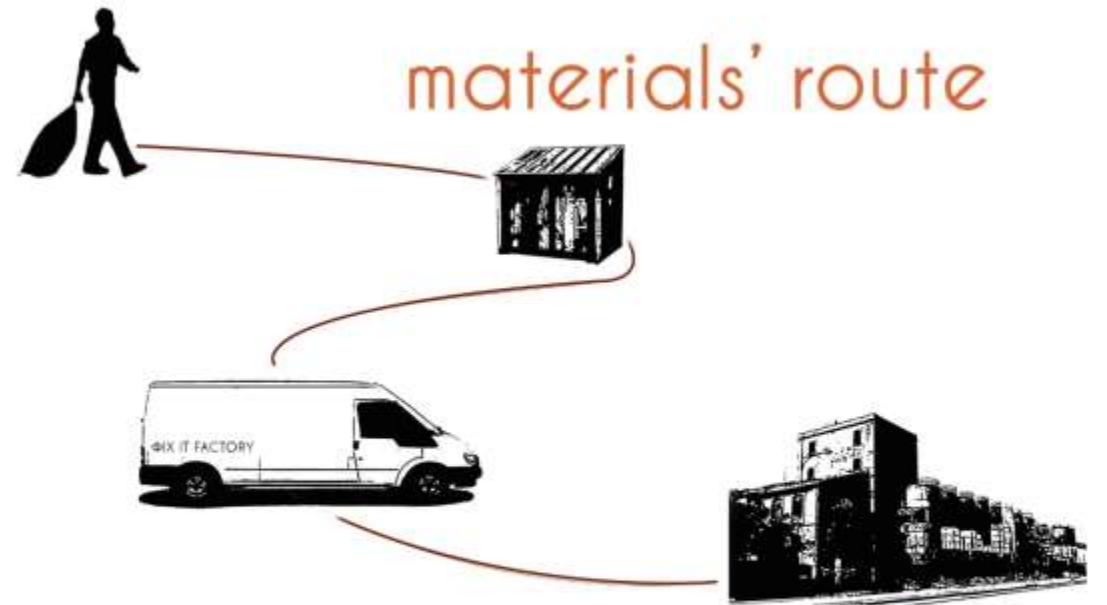
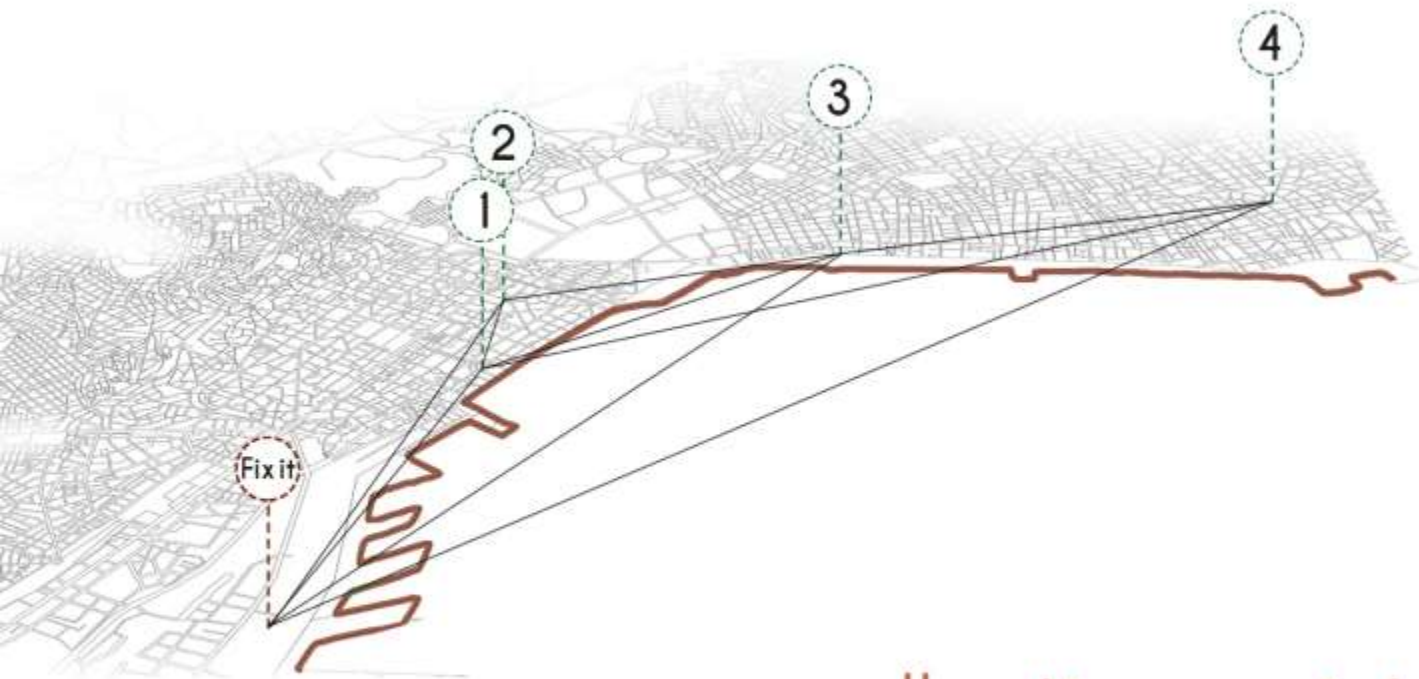
management



volunteers







## collection points

- 1



aristotelous square
- 2



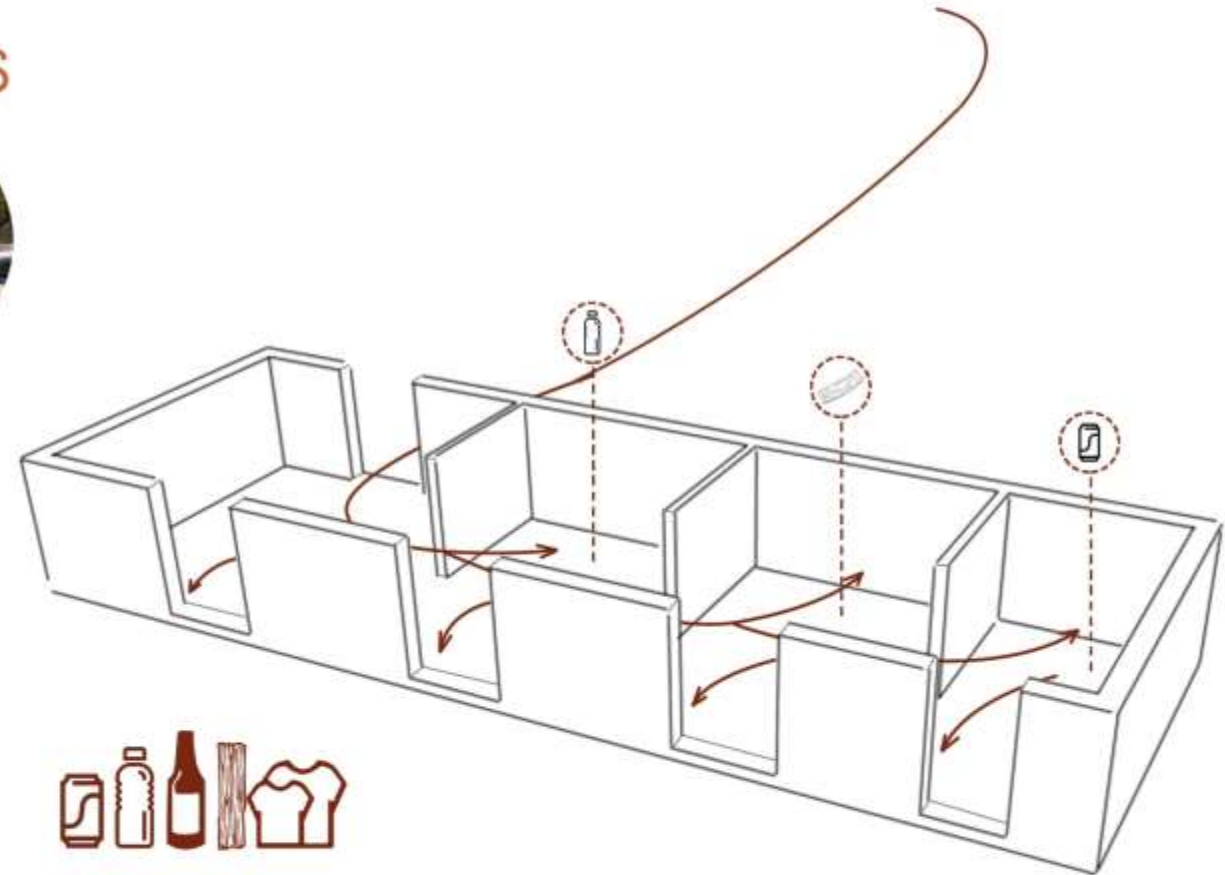
navarinou square
- 3



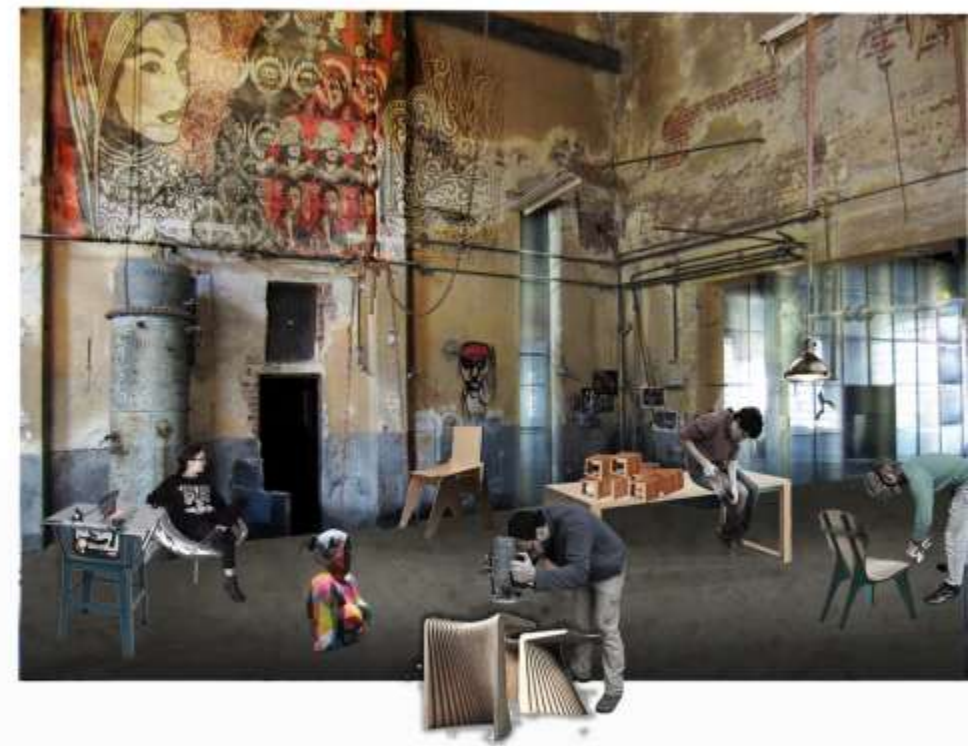
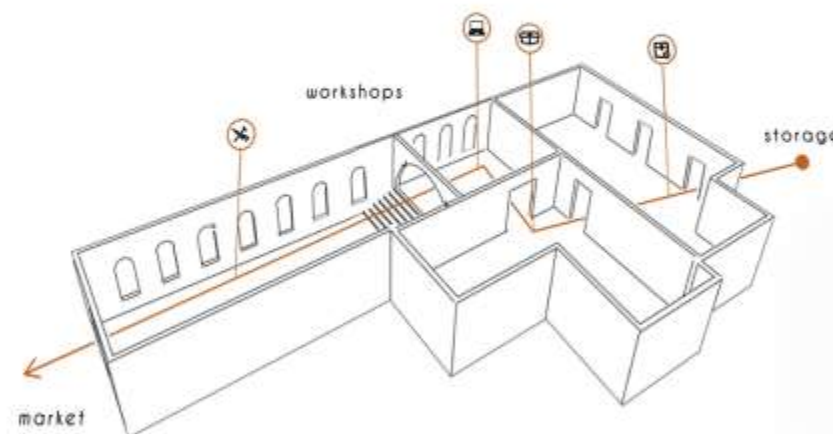
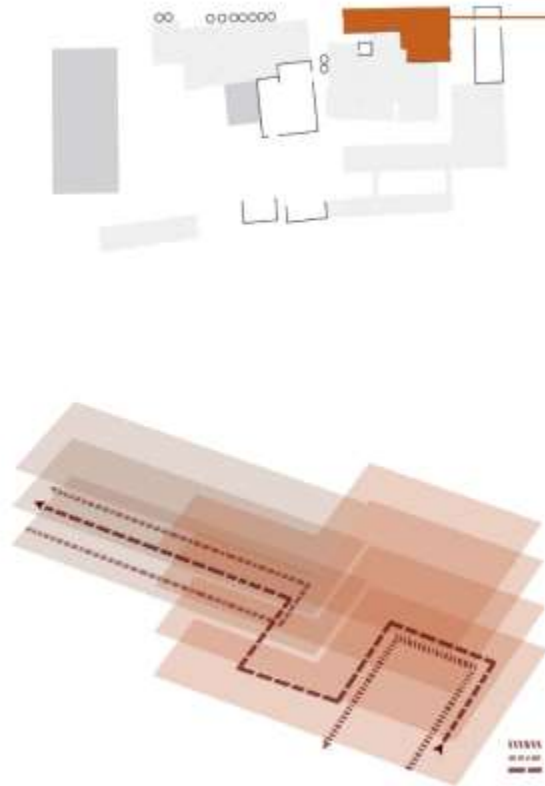
glass pavilion on the port
- 4



park of arde

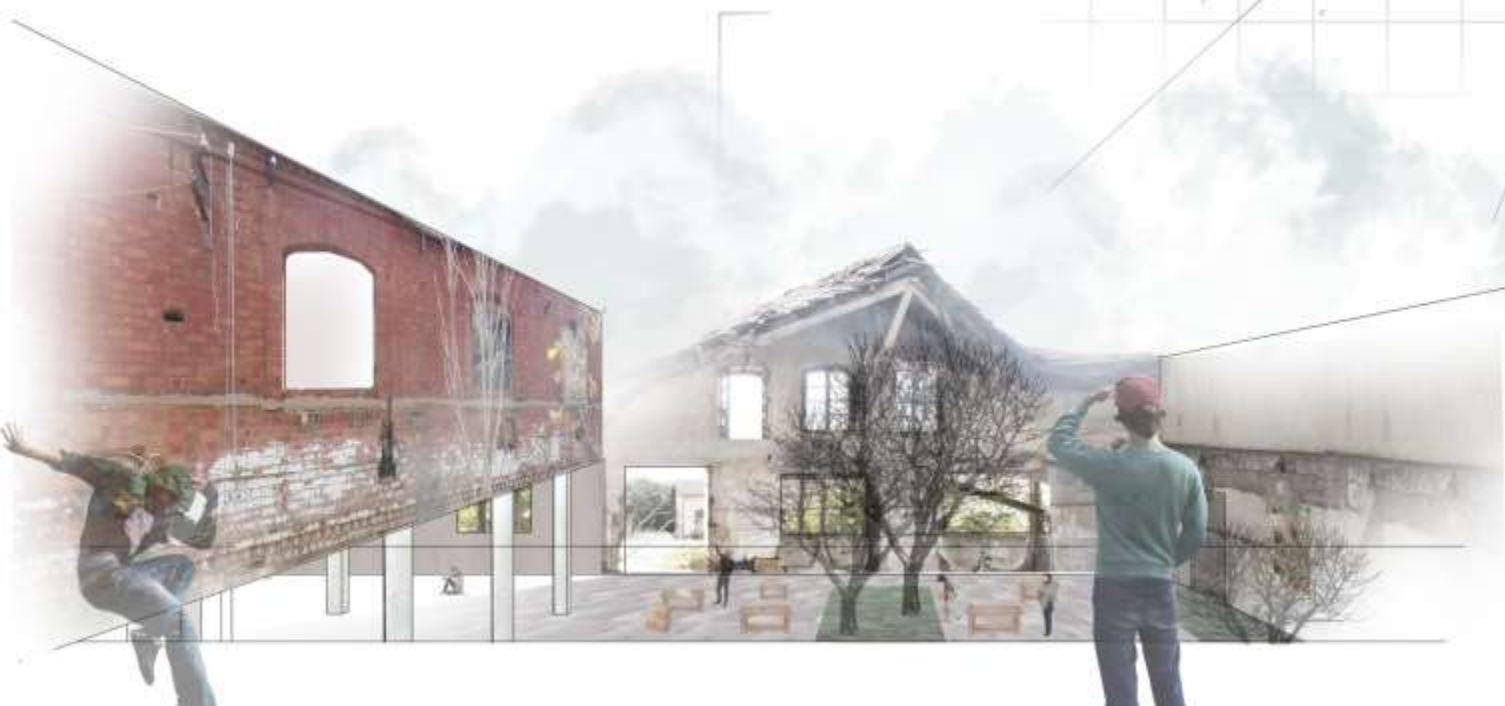
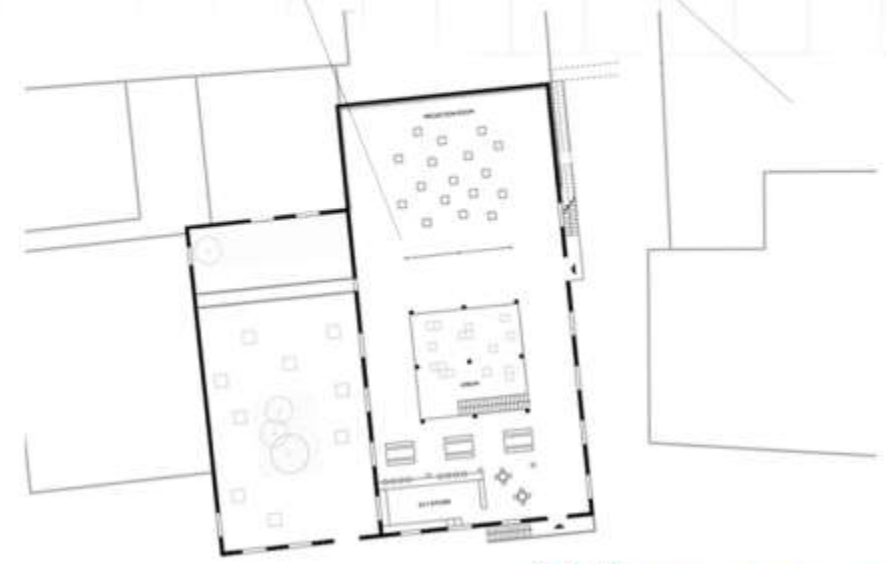
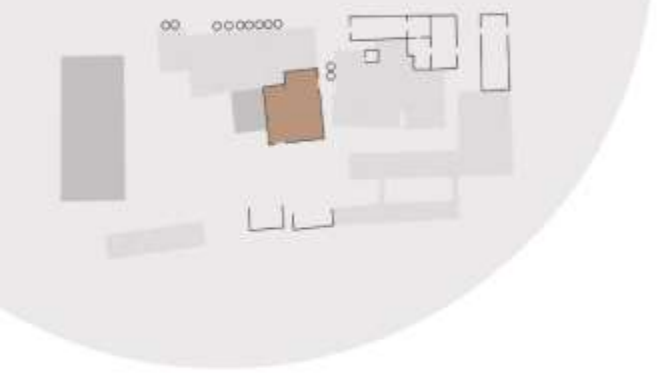




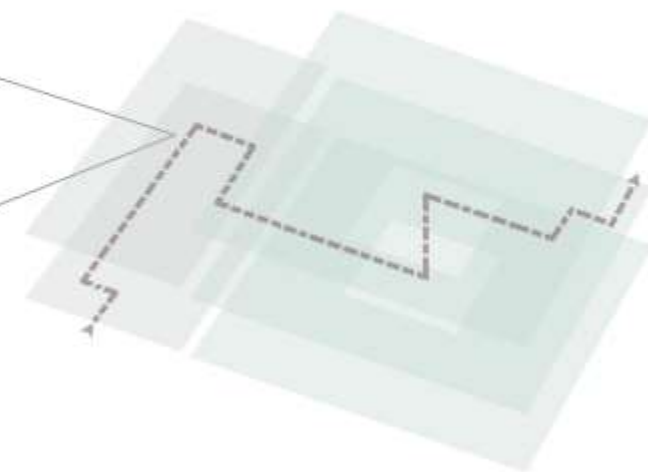
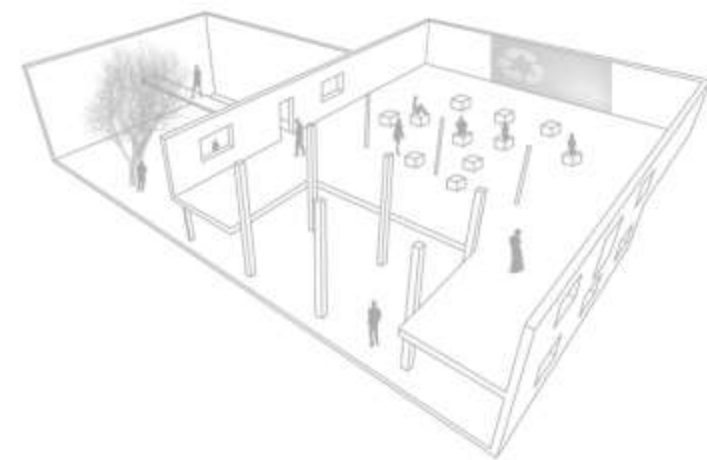
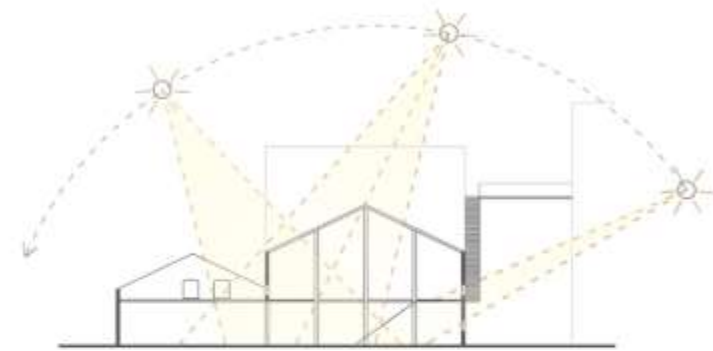




# Workspace\_Projection area\_Kitchen









# Φlea market



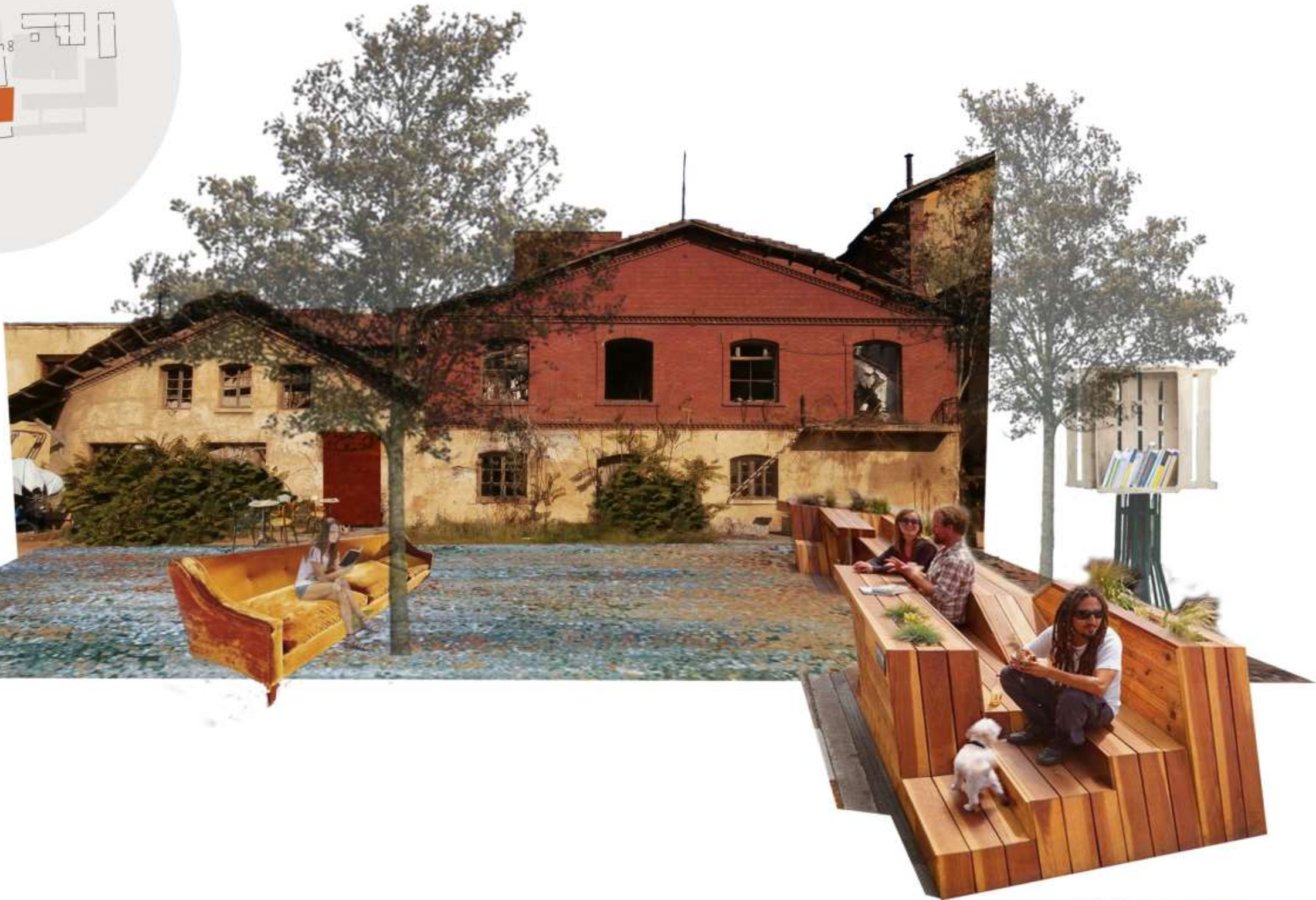
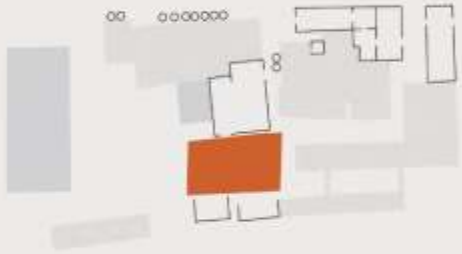
## Φlea Market

wooden furniture  
unique objects  
handmade crafts

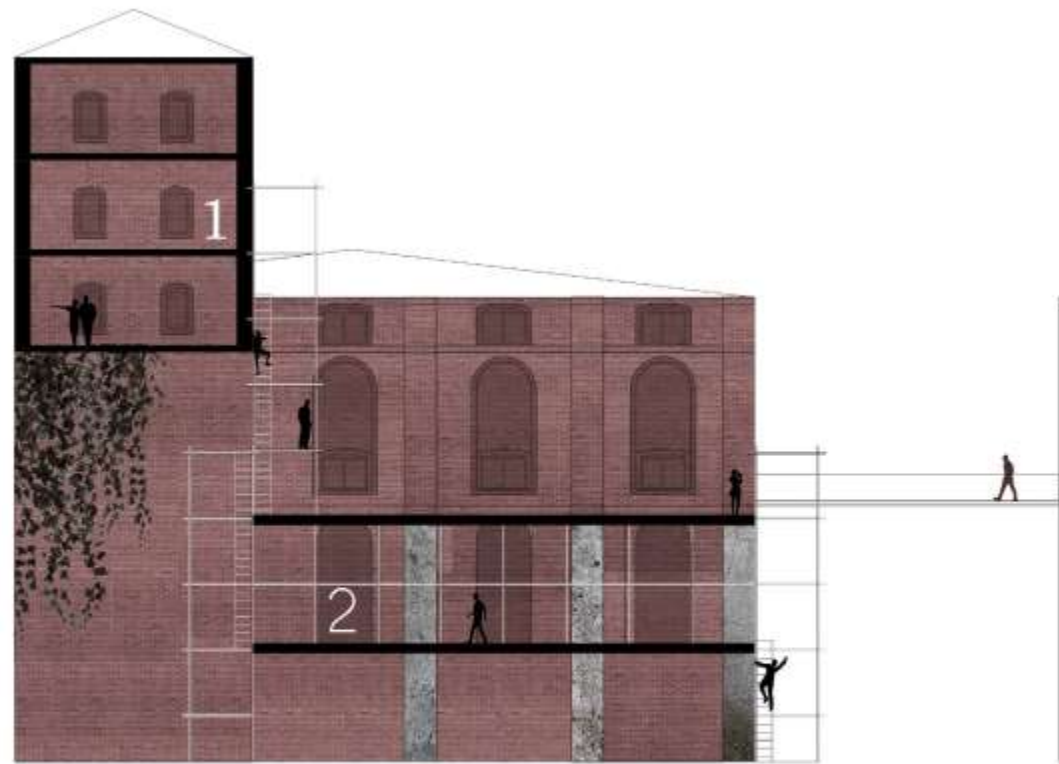
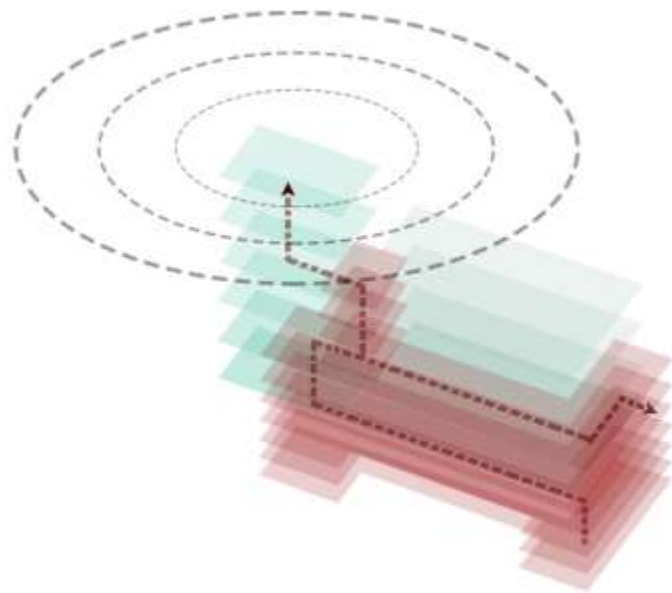




# Plaza







# Tower\_Observatory

circulation diagram

