

The facade



GREENHOUSE
ECOWEEK ... *global synergy* ... *local solutions*

חזית המרכז הקהילתי לזרוס

פרוגרמה

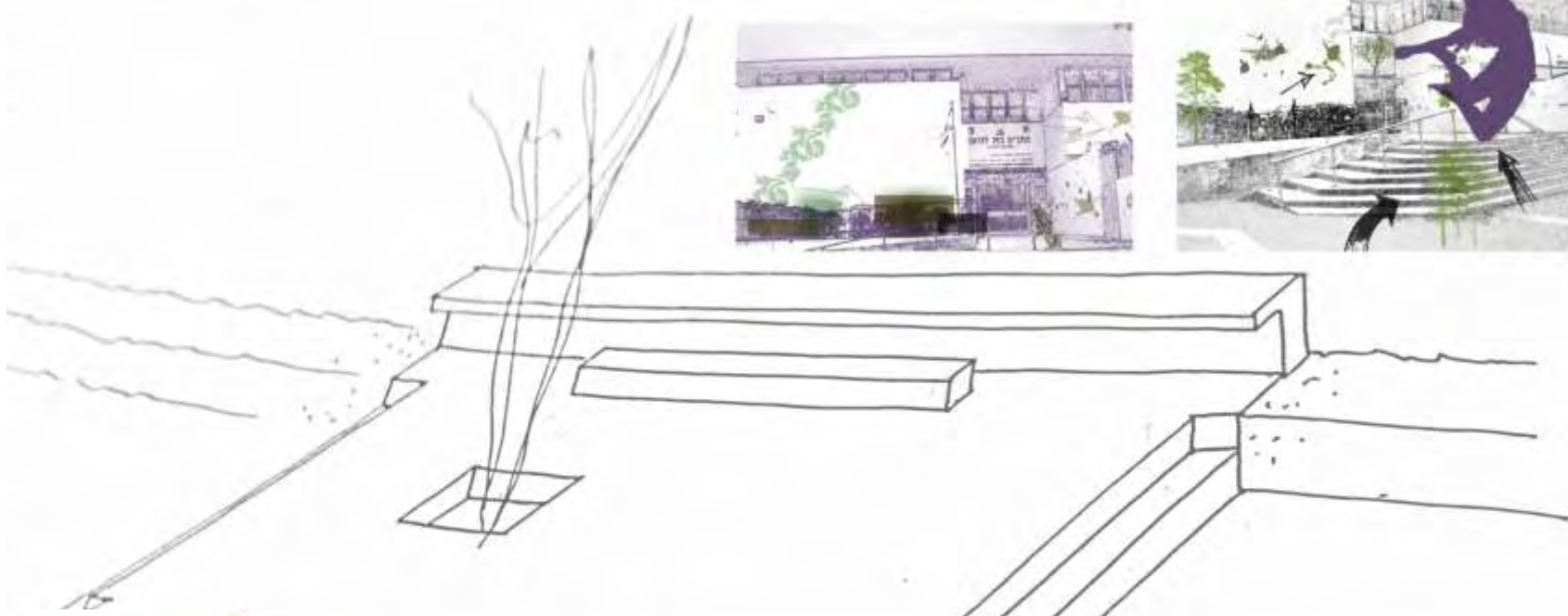
מייצגת

מענה לישיבה "על הברזלים"

מזמינה

מכובדת

נעימה



תכנון מחדש

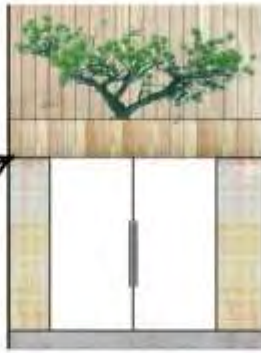
1. פרגולת כניסה, הוספת חיפוי עץ, יצירת אדנית, שתילת עץ והשקיתו ע"י מי מזגנים מצינור קיים. ציור גרפיטי בשיתוף ילדי המקנ"ס על צידי הדלת.

2. שיוף ריצוף הגרנדליט ויציקת אריחי בטון.

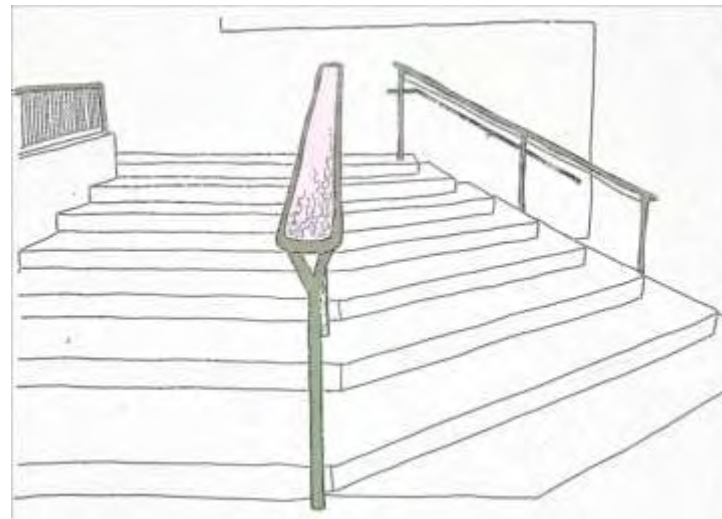
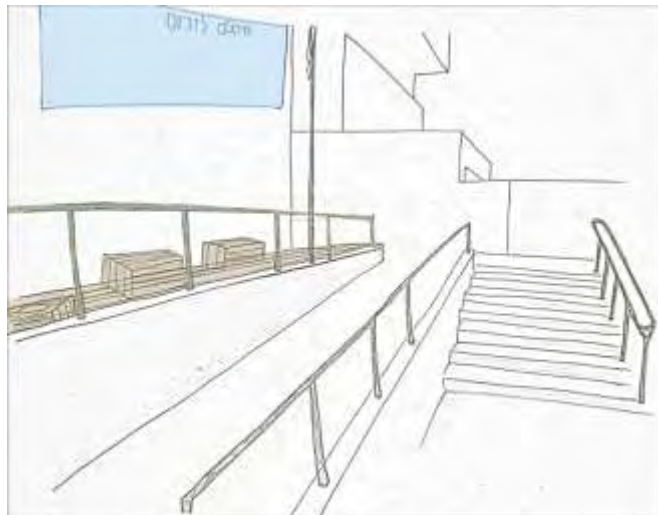
3. צביעת מעקות סורגים והחלפת גדרות.

4. ביטול גינת הכניסה, ריצוף בדיק עץ אוח ויצירת מקומות ישיבה

5. החלפת שילוט, איחוד השלטים הקיימים למערך אחד המשמש כחיפוי קיר מרכזי



חדית צפונית קנ"מ 1:100



תוכנית כניסה קנ"מ 1:100



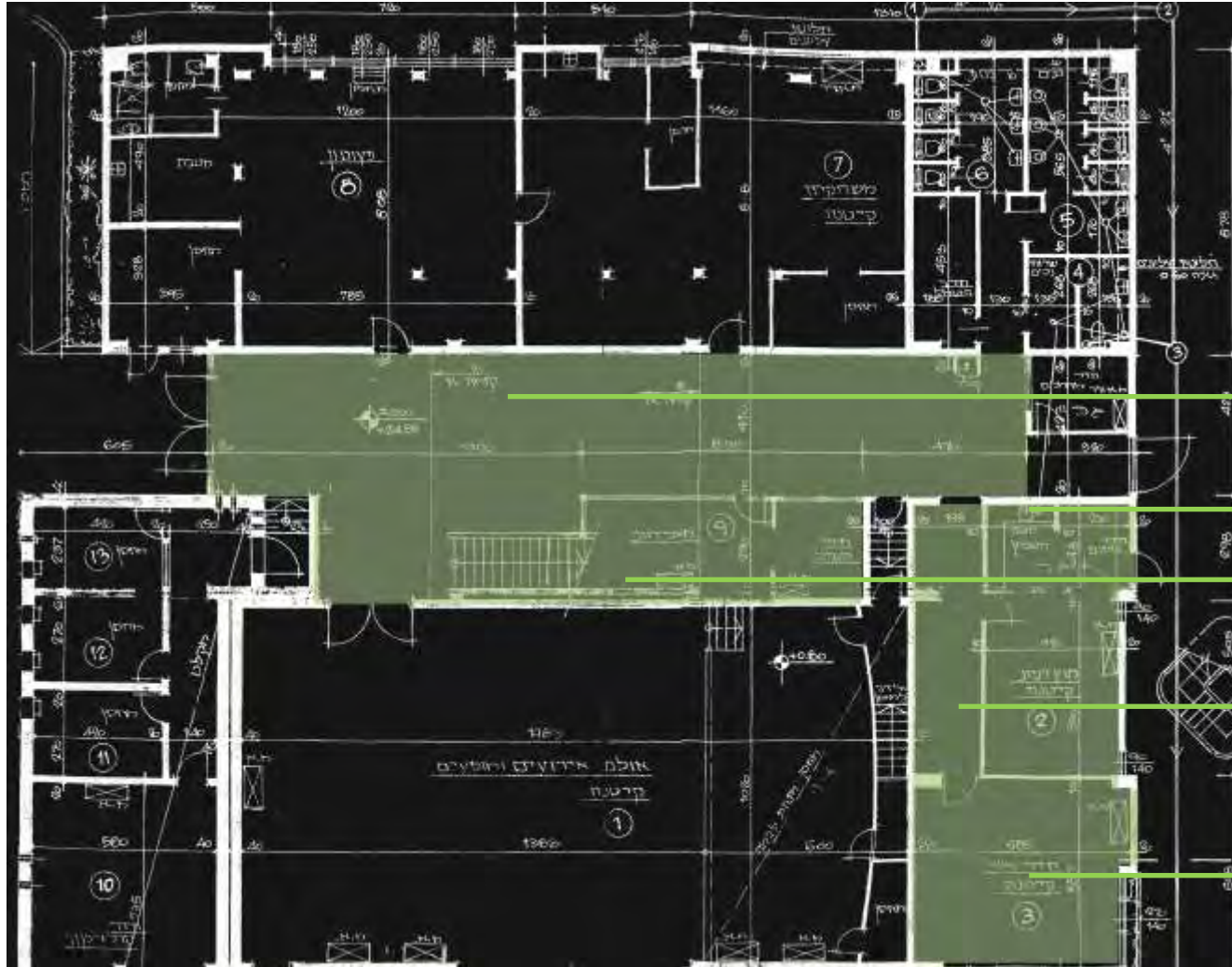
The lobby



GREENHOUSE
ECOWEEK ... *global synergy* ... *local solutions*

CURRENT PLAN

תוכנית קיימת והתערבות



LOBY לובי

KITCHEN מטבח

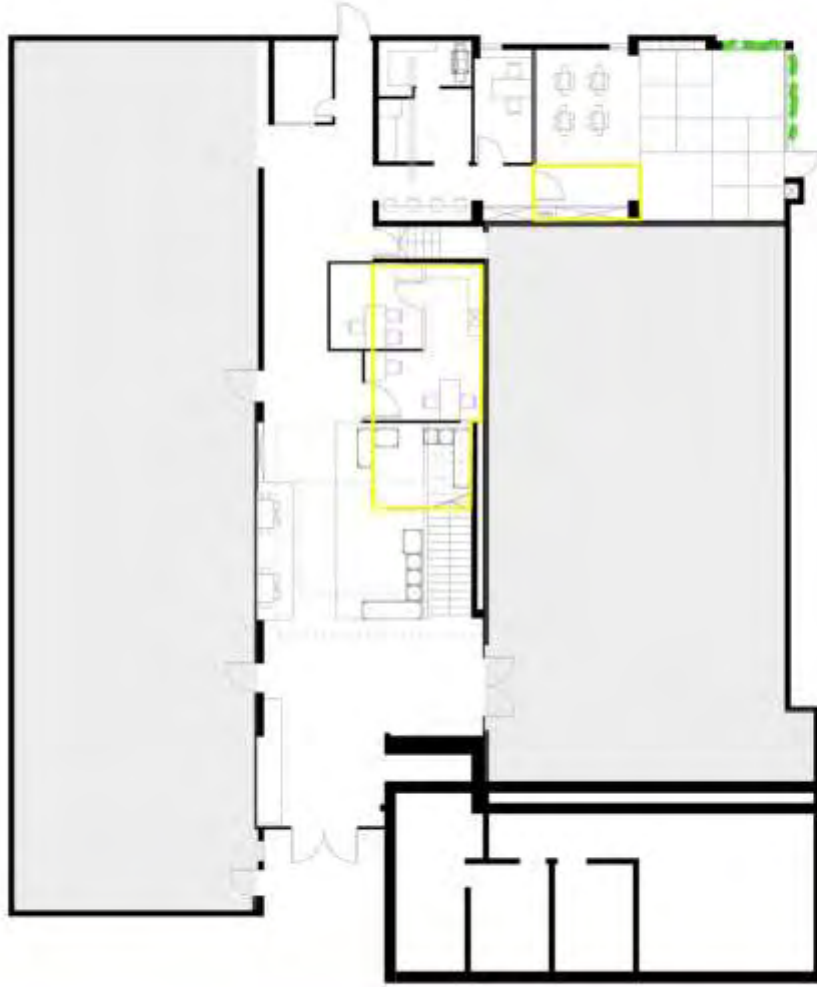
SECRETARY מזכירות

ROOM TZAHALA חדר צהלה

PLAY ROOM משחקייה

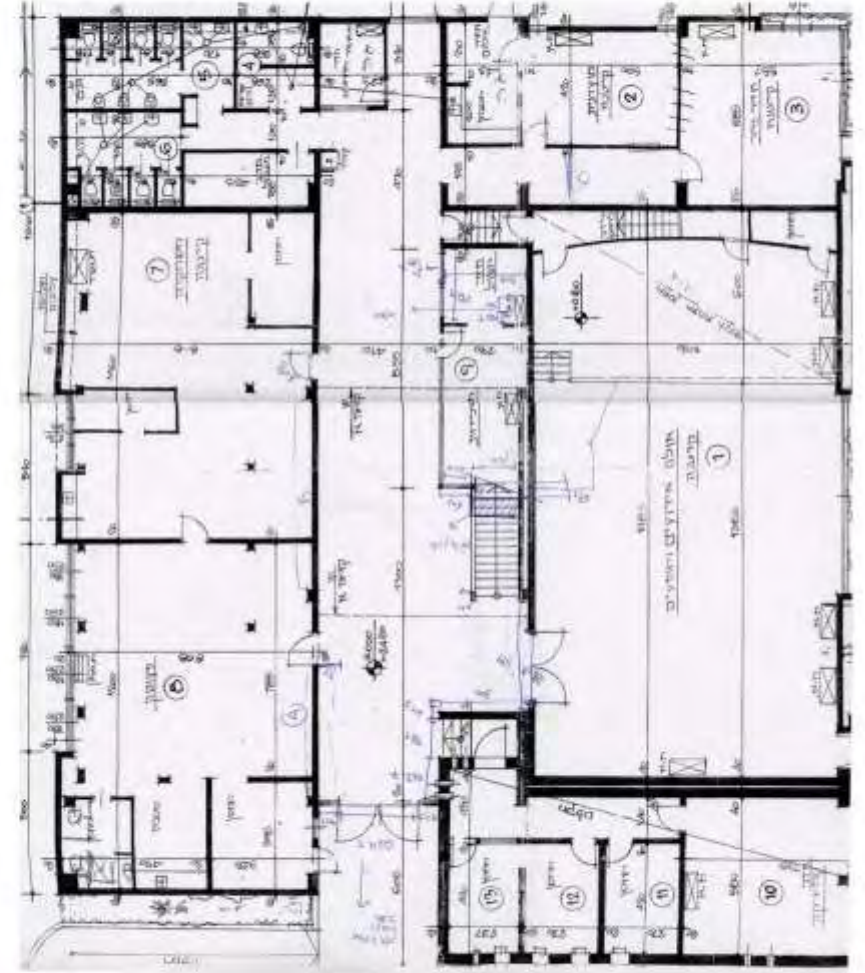
NEW PLAN

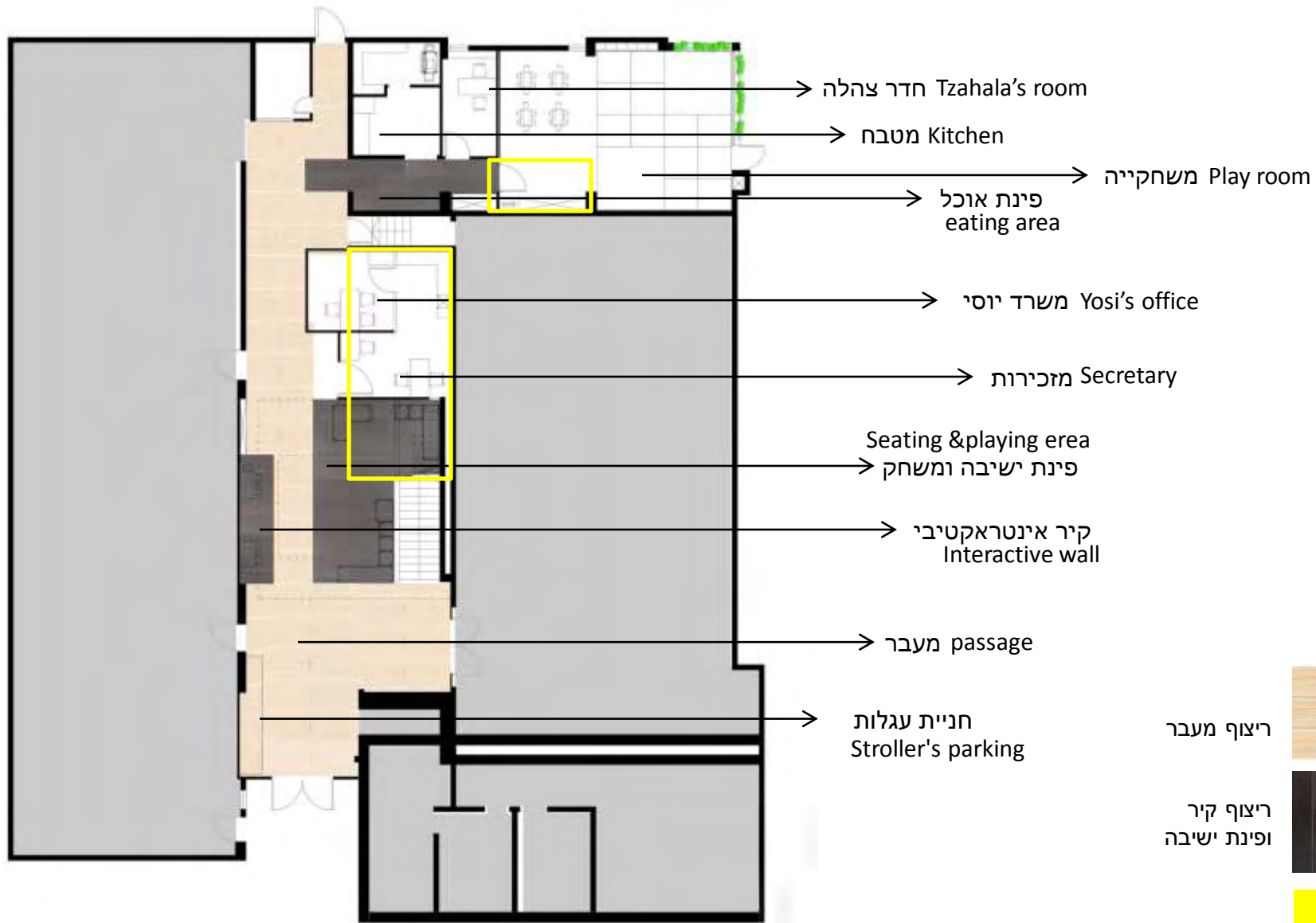
תוכנית חדשה



CURRENT PLAN

תוכנית קיימת





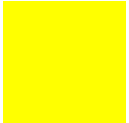
ריצוף מעבר



ריצוף קיר
ופינת ישיבה



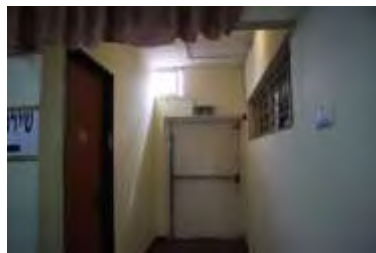
מצב קיים בתוכנית



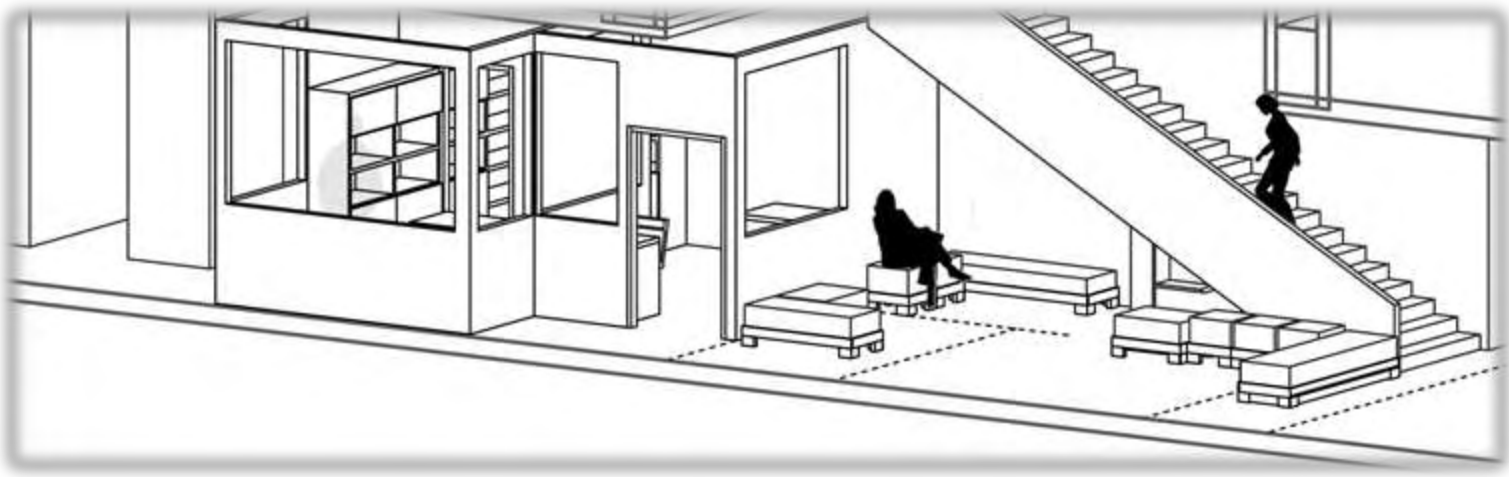


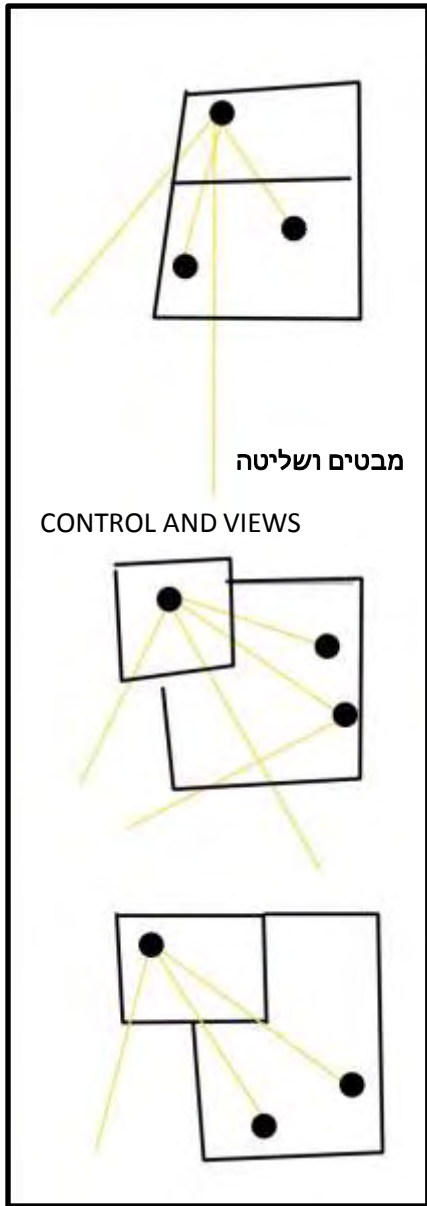
הגדרה מחדשת של
אזורי הלובי

סידור מחדש של המשרדים



LOBY לובי



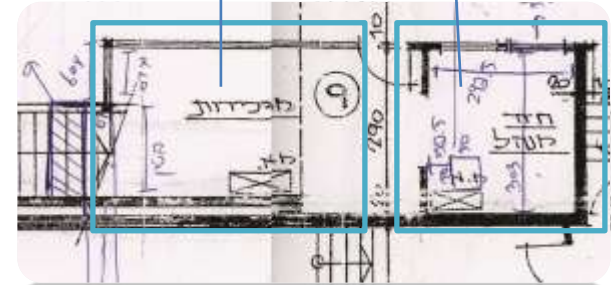


SECRETARY

מזכירות

נגישות, שליטה, והרחבת שדה ראייה

הגדלת שטח המשרדים וסידורם מחדש



משחקייה
PLAY ROOM

הוספת אחסון קבוע

הוספת גורם הסתרה לחלונות

הזזת החדר של צהלה

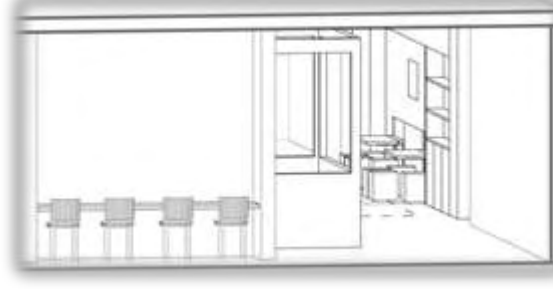
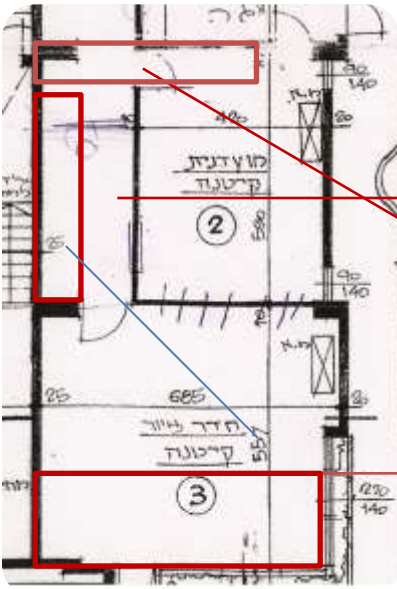
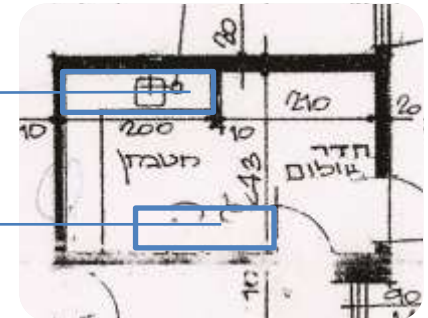
KITCHEN

מטבח



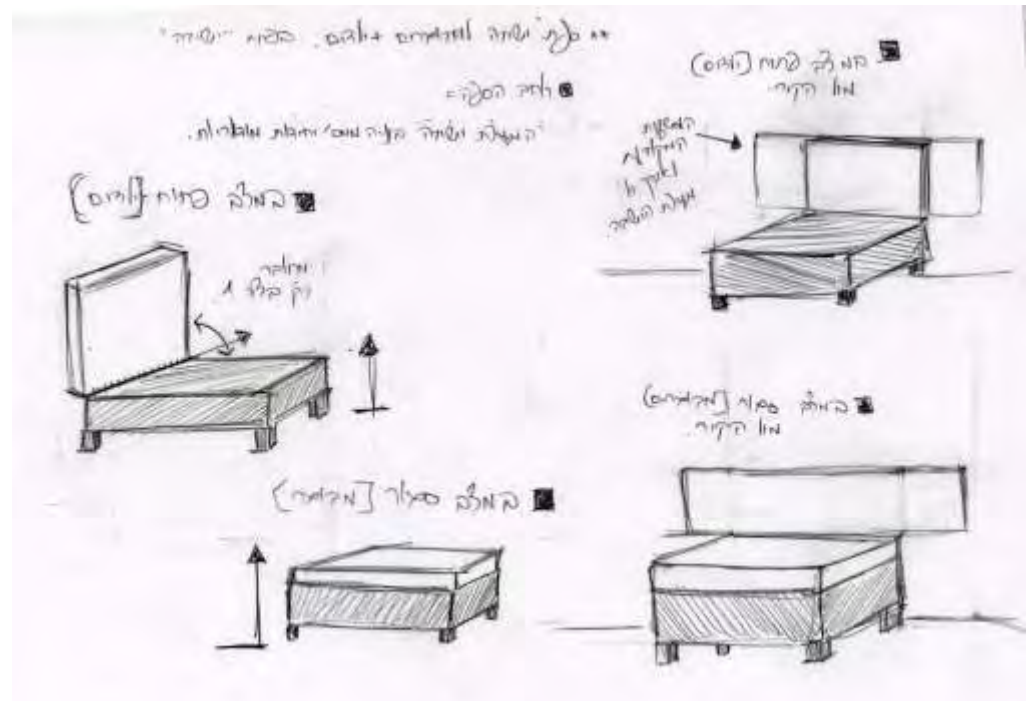
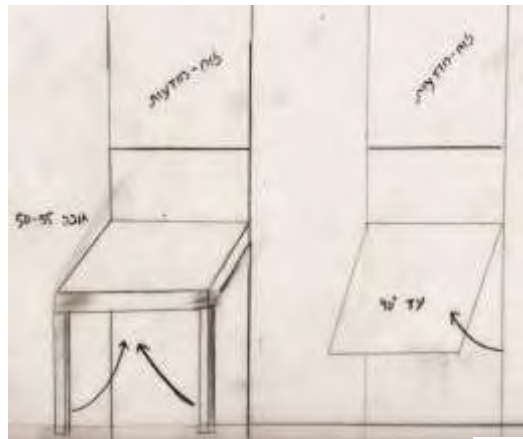
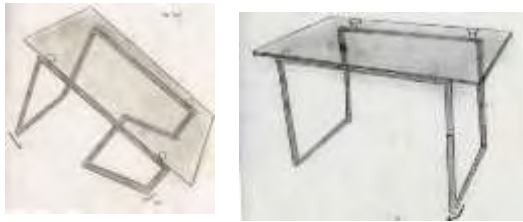
הזזת מכשירי חשמל
למקום נגיש יותר

הוספת מקום ישיבה לאכול



SKETCHES AND IDEAS

סקיצות ורעיונות לריהוט







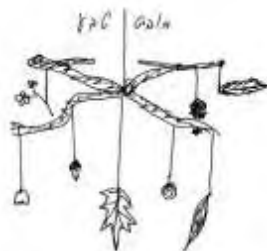
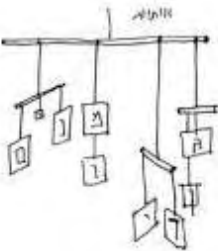
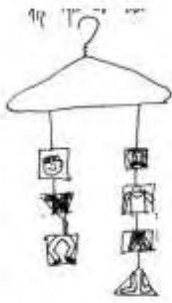


skylight



GREENHOUSE
ECOWEEK ... *global synergy ... local solutions*

INSPIRATION



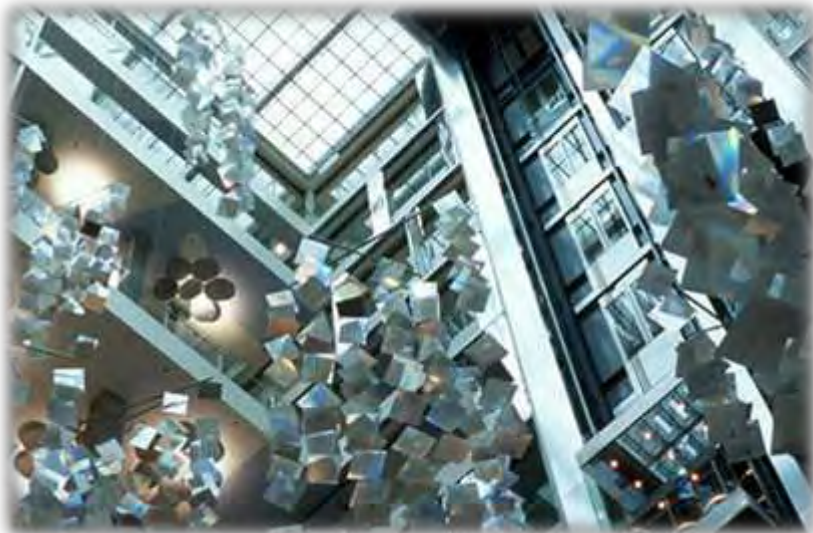
CURRENT SITUATION



NEW SITUATION



CURRENT SITUATION

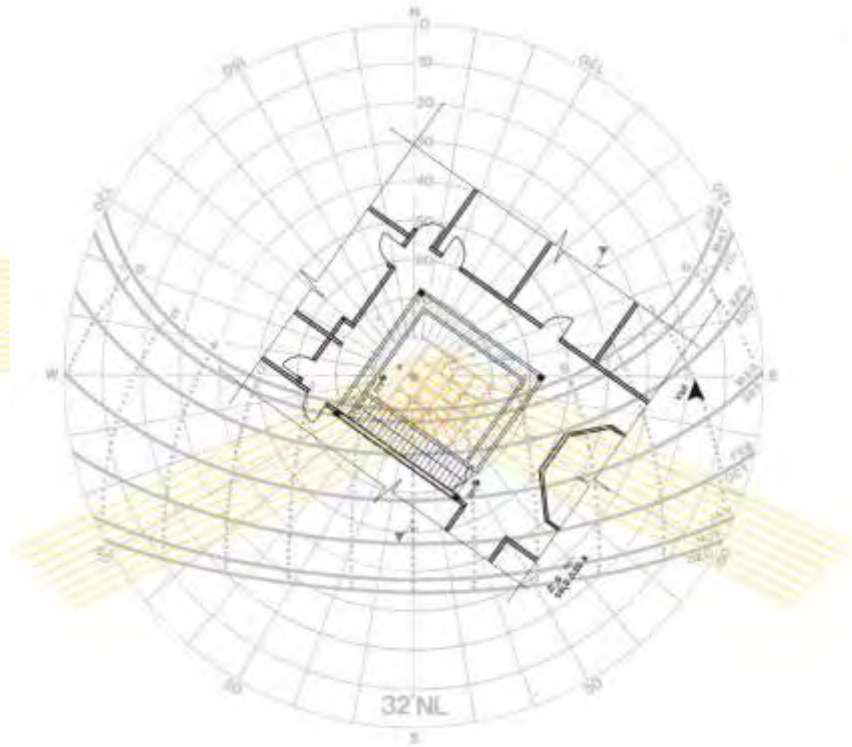
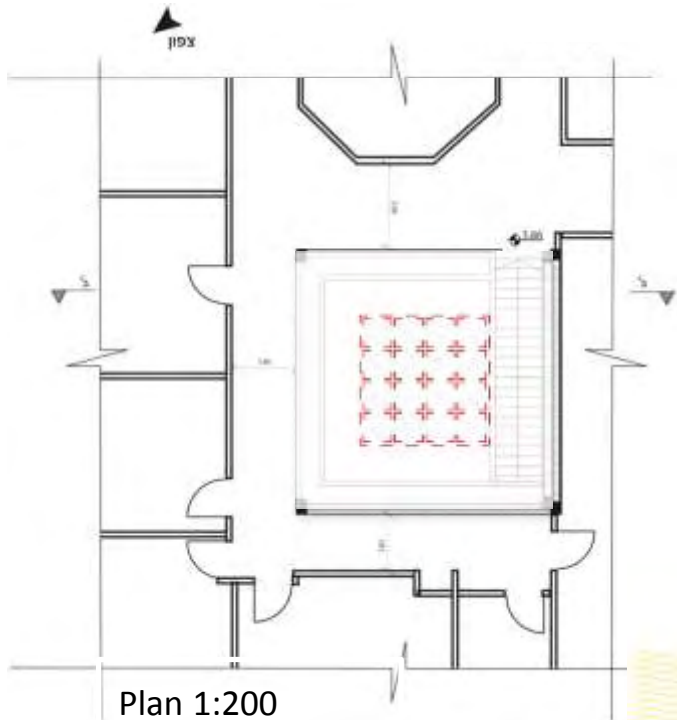


GENZYME CENTER , SUSTAINBLE BUILDING



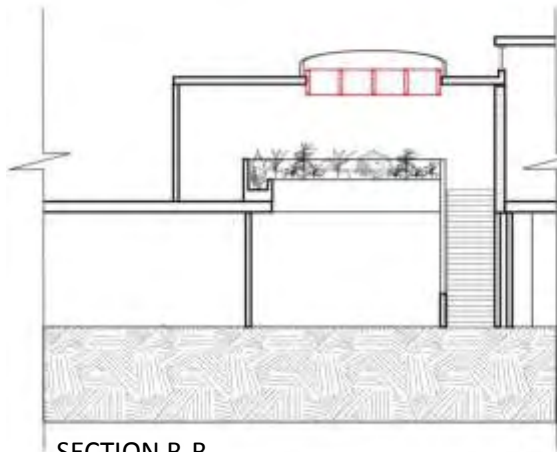
FUNF HOFFE , HERZOG & DEMERON

Sun light



1 DECEMBER
07:00 /
17:00
AZ 64
ALT 1

AZ 64

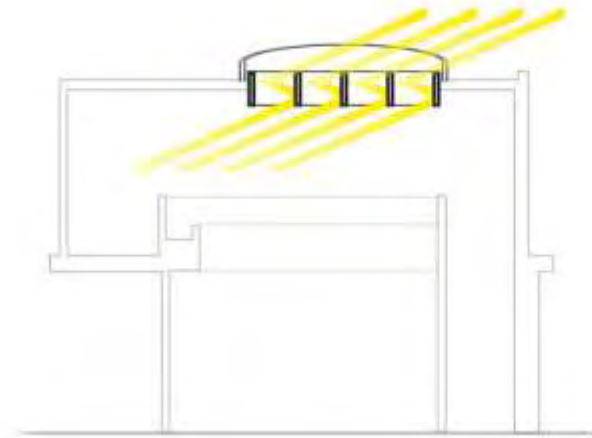
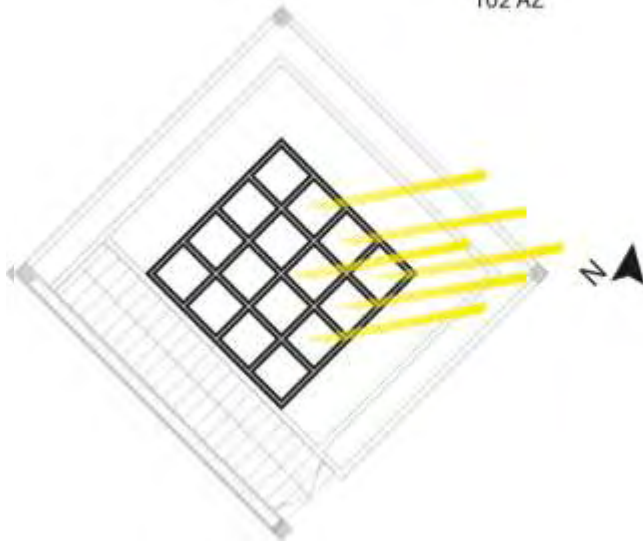


SECTION B-B
1:200

1 JULY
07:00 /
17:00

102 AZ

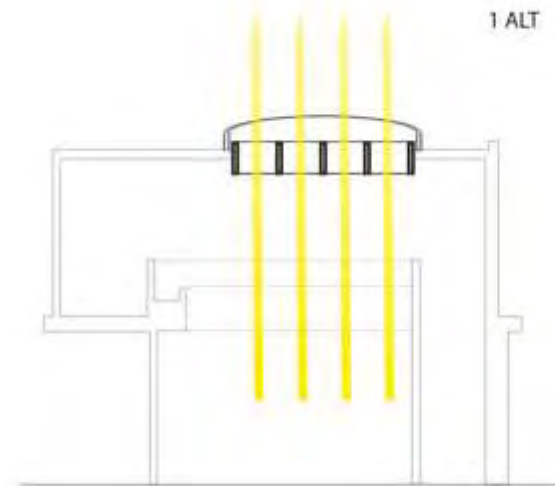
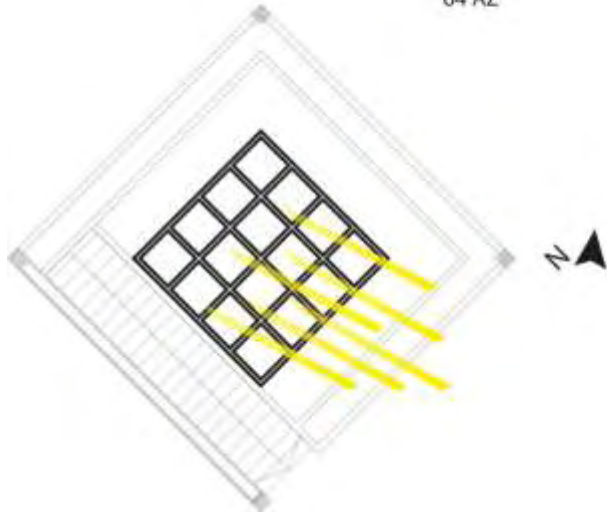
23 ALT

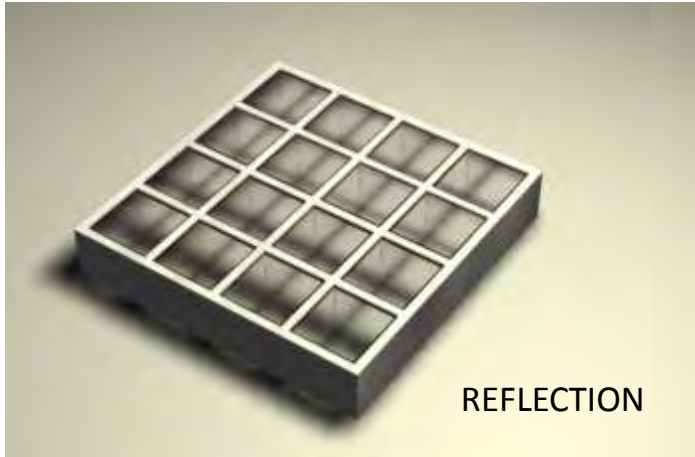


64 AZ

1 ALT

1 DECEMBER
07:00 /
17:00





OPTION 2



OPTION 1



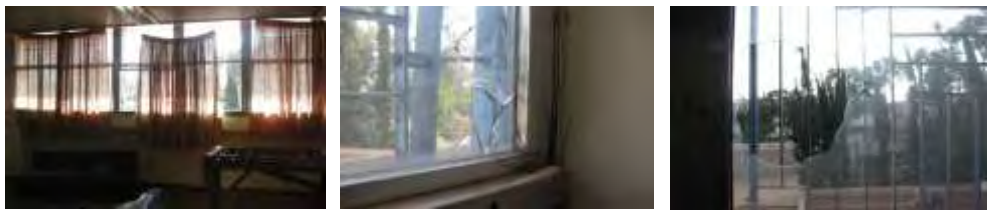
The Playroom



GREENHOUSE
ECOWEEK ... *global synergy* ... *local solutions*

The playroom today

windows



Broken windows
No shading elements
Non child friendly opening mechanism

floor



Height differences
Between two spaces

walls



Walls disconnected to ceiling

lighting



Small amount of natural light

**no thermal and Acoustic Insulation And programmatically
This room is unsuitable for the children and their activities**

The playroom suggestion

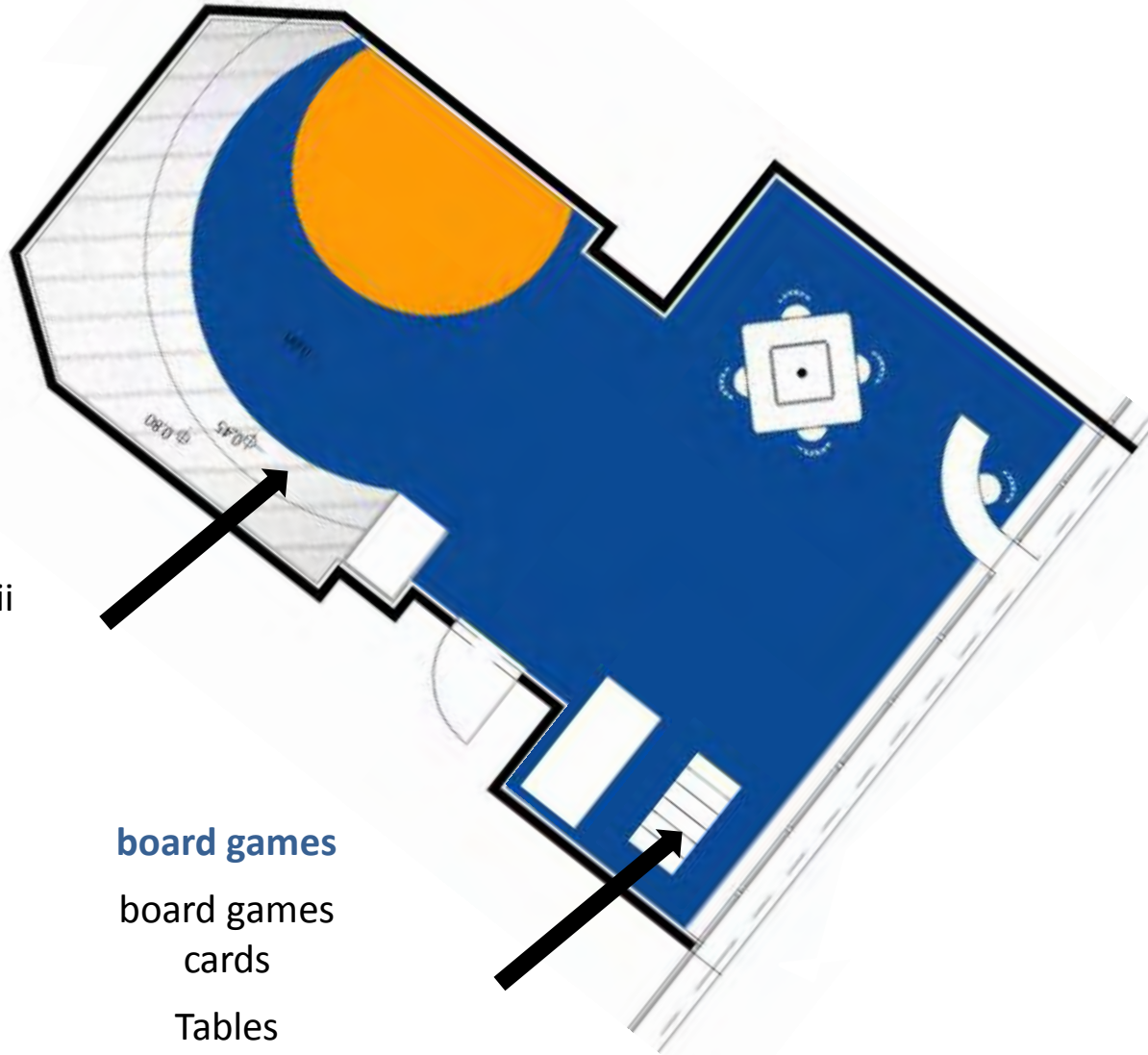
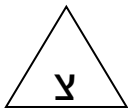
Types of activities: playing room and game zone for interactive games

Target audience: pre school students, age: 6-12 years

The playroom is operated by a supervisor and is an after school activity for the children in the neighborhood.



board games	Computers	Video games
board games cards	4 computers	Lcd tv screen Playstation / wii
Tables chairs	Tables chairs	Storage unit Sitting area

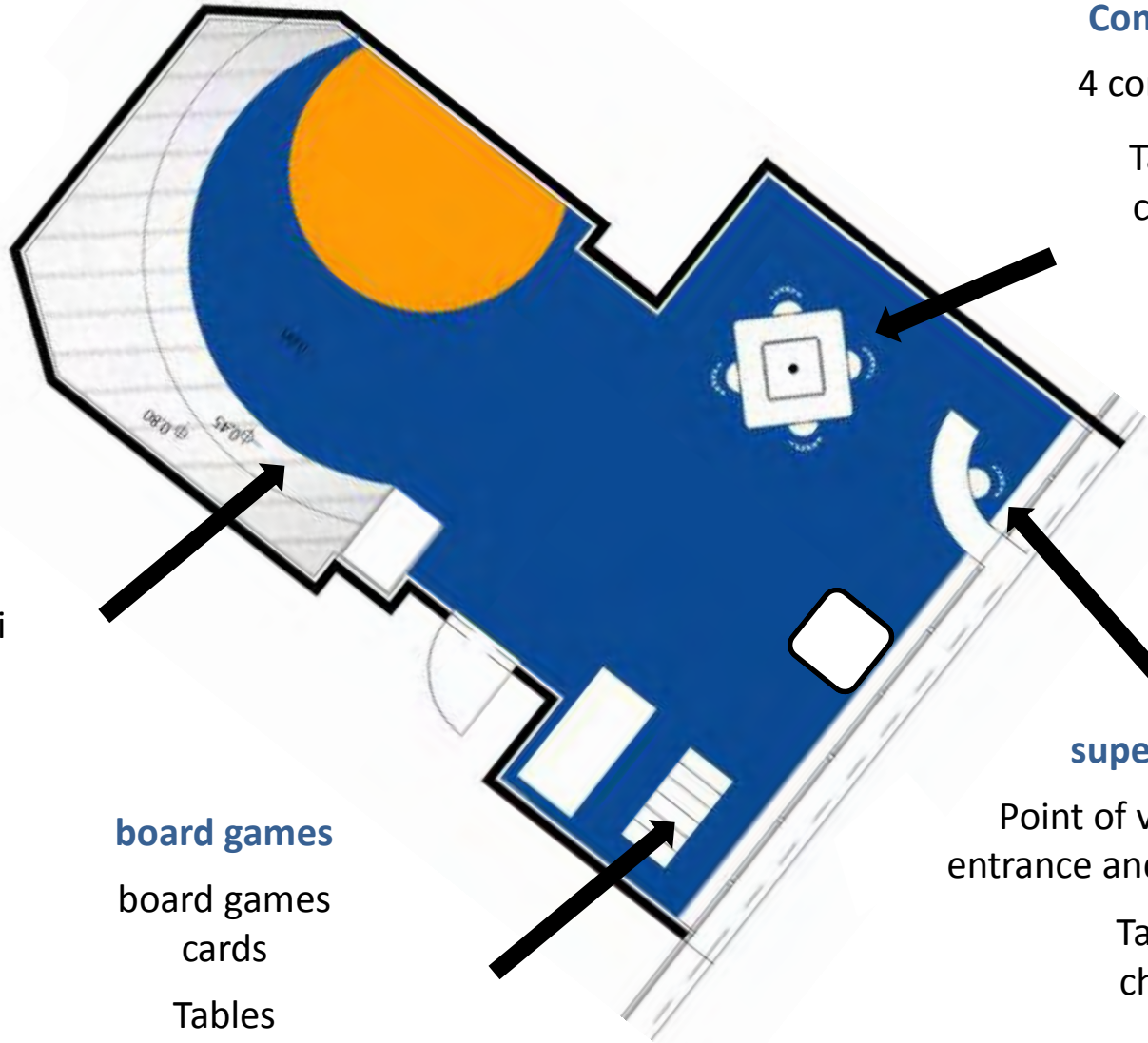
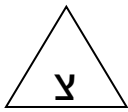


Video games

- Lcd tv screen
- Playstation / wii
- Storage unit
- Sitting area

board games

- board games
- cards
- Tables
- chairs



Computers

4 computers

Tables
chairs

Video games

Lcd tv screen
Playstation / wii

Storage unit
Sitting area

board games

board games
cards
Tables
chairs

supervisor

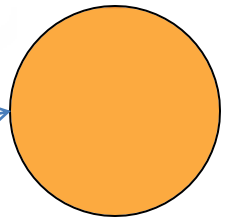
Point of view to the
entrance and whole room

Table
chair

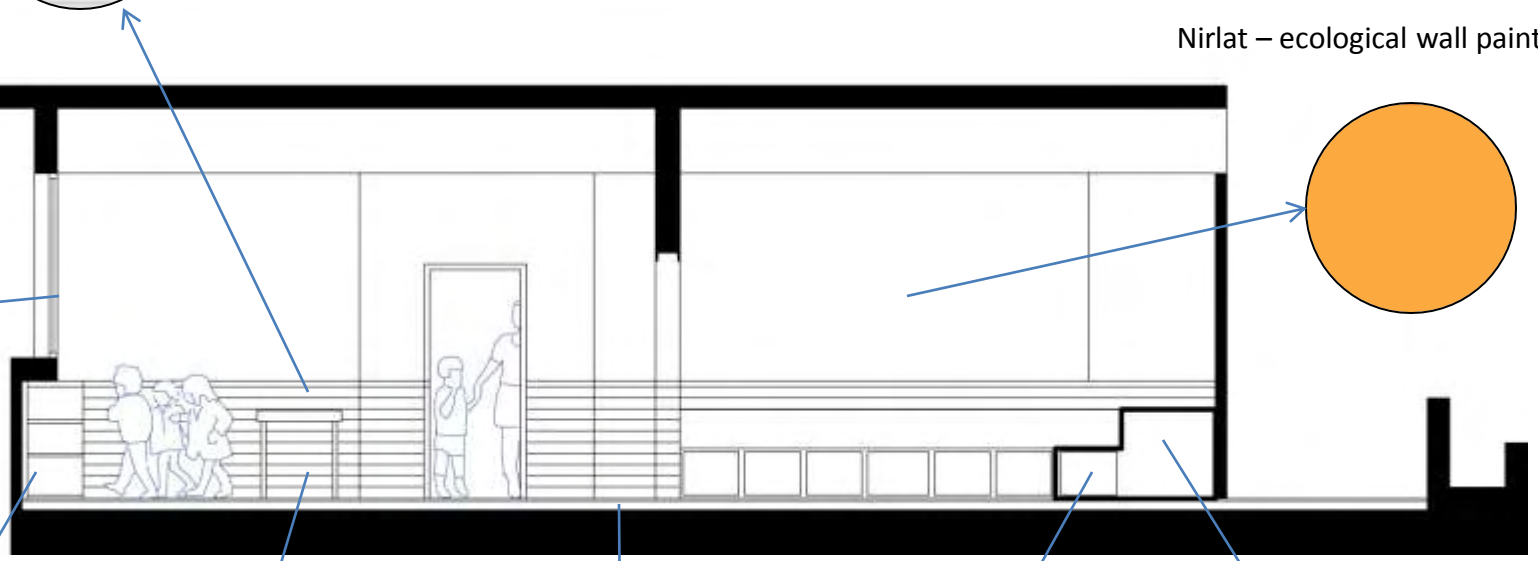
White wood Wall cladding – floor - 120 cm



Nirlat – ecological wall paints



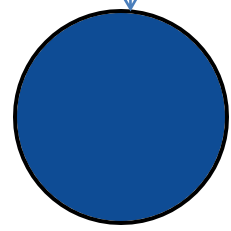
Insulated window



Hidden storage –
collapsible tables



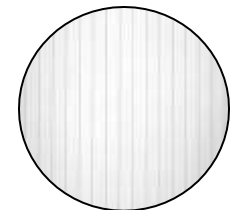
board games



P.V.C floor



Hidden storage – sitting units



Sitting stairs made by Gypsum covered by wood



