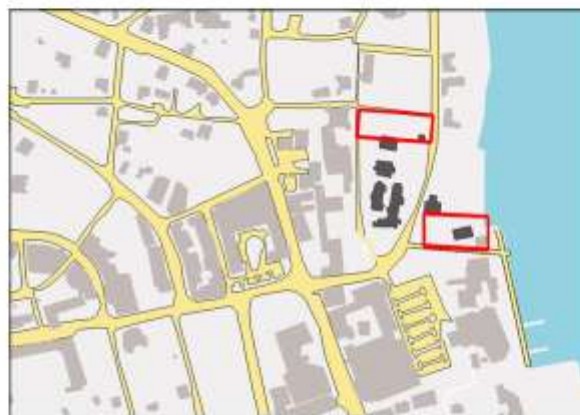


ECOWEEK
2012 ... habits change ... climate change

**W10/PEACE AND RECONCILIATION CENTER
SCOTTISH COMPLEX, TIBERIAS
MIDDLE EAST/ISRAEL & WEST BANK**

LUAY BADER
SHMAYA SHALEV
DANIEL D.SHORER
MEHTAP LEYLA TURANALP
OMRI BEN CHITRIT
KEREN M.RELEVY
OSHER FRANK
ABDULLAH MUHAMMED DANDEES
MARIAM A.NAMMOURA
HAZAL GÜMÜŞ
ADI COHEN
HANIN SHAVIC
DENİZ ÖZTÜRK
MASSALA JAHRAH
ALA ALABED

GIL PELED - THOMAS DOXIADIS



TIBERIAS

**TWO SITES
NEAR THE
LAKE**

THE CUSTOMER BRIEF

OUTSIDE SPACE

LARGE PLENARY MEETING ROOM

SMALLER MEETING SPACES

LIBRARY/ RESOURCE CENTRE

ADMINISTRATION OFFICES

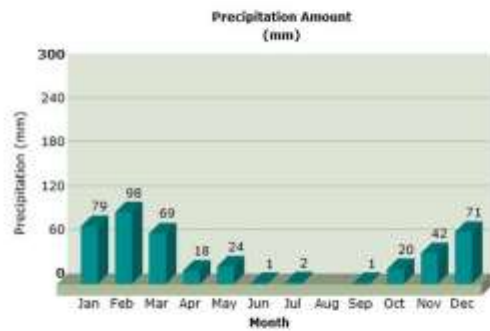
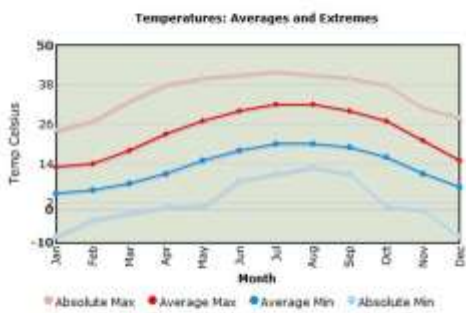
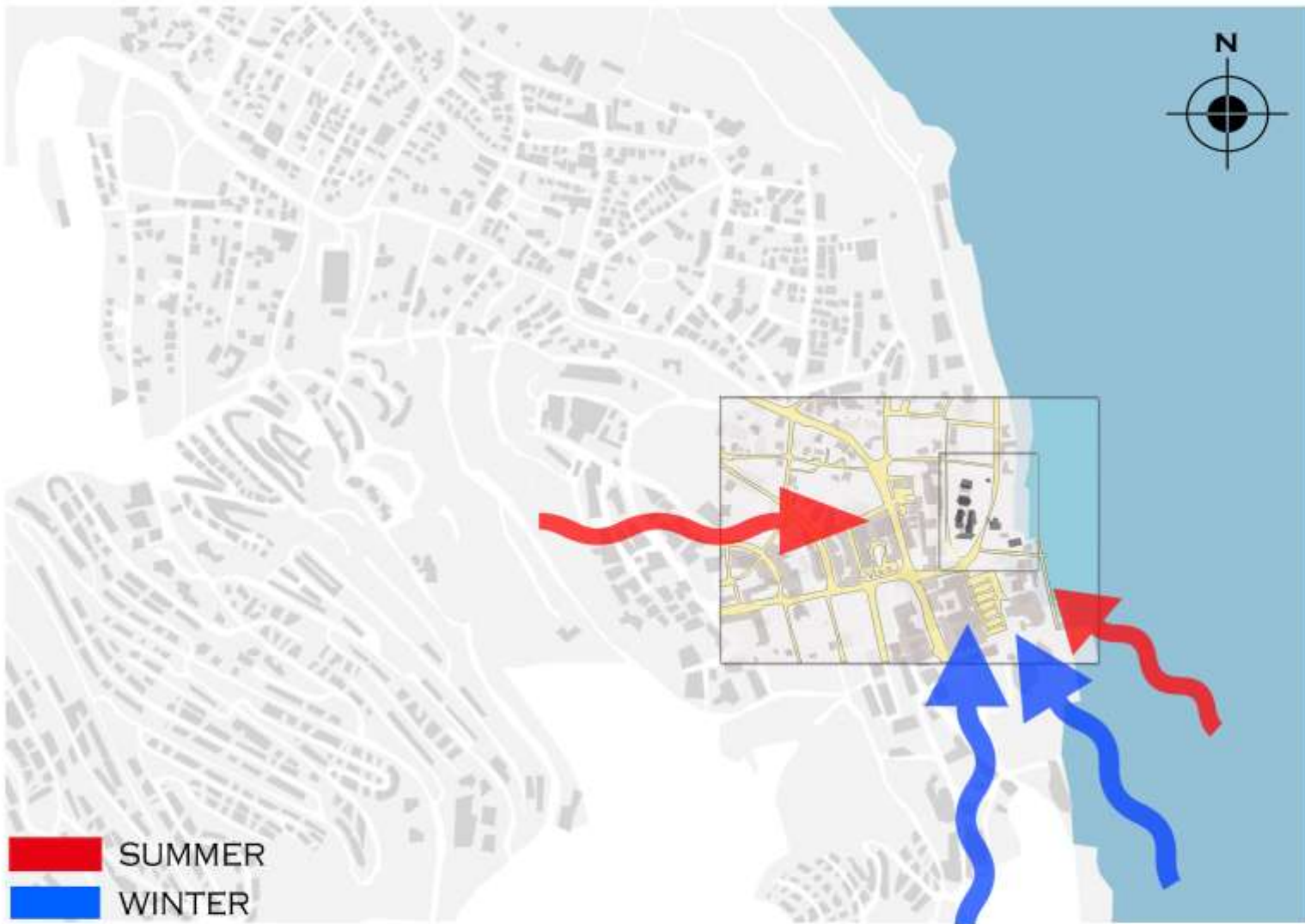
LOUNGE/COFEE-BREAK AREAS

ACCOMMODATION

TOILETS, STORAGE SPACE



THE SITE



THE CLIMATE

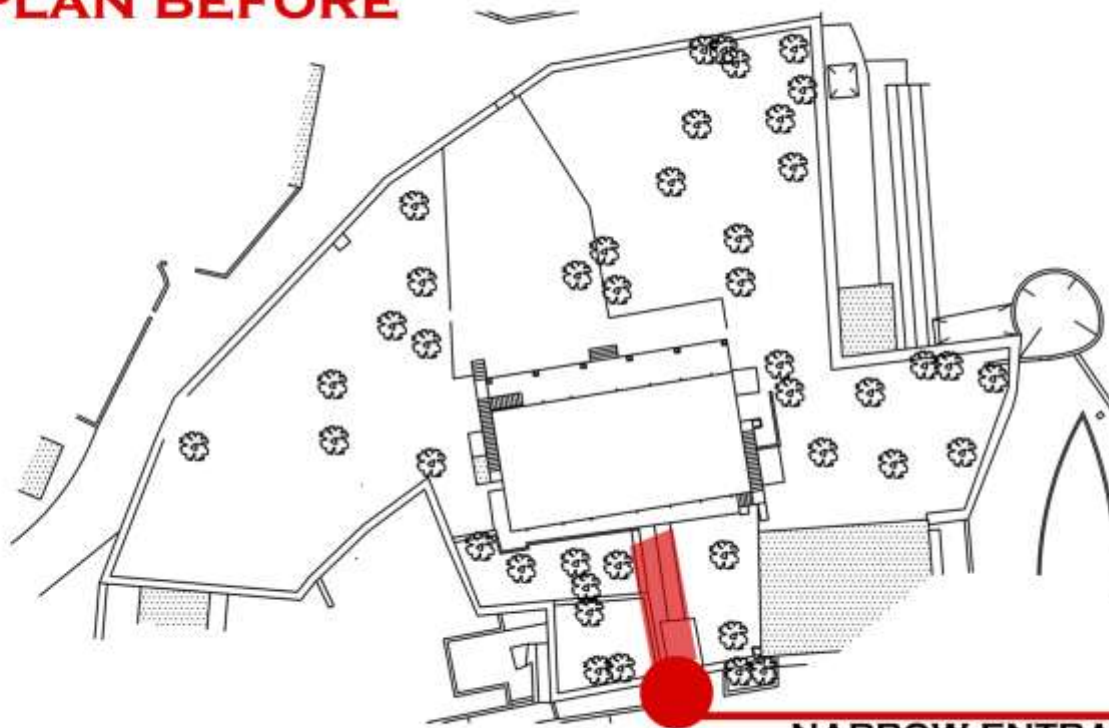


DEAD END STREET

ACCESS TO THE LAKE

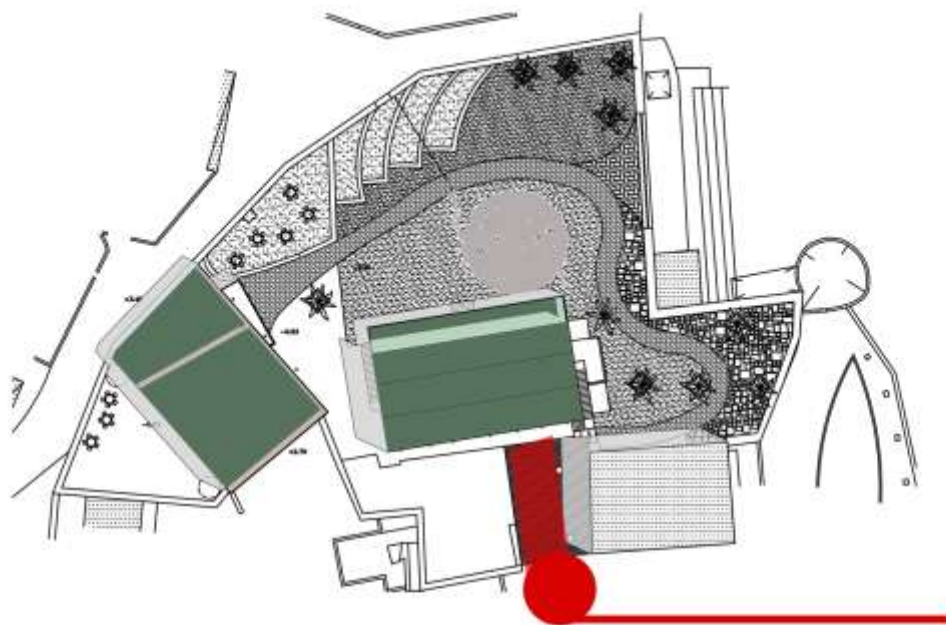
ACCESSIBILITY

THE PLAN BEFORE

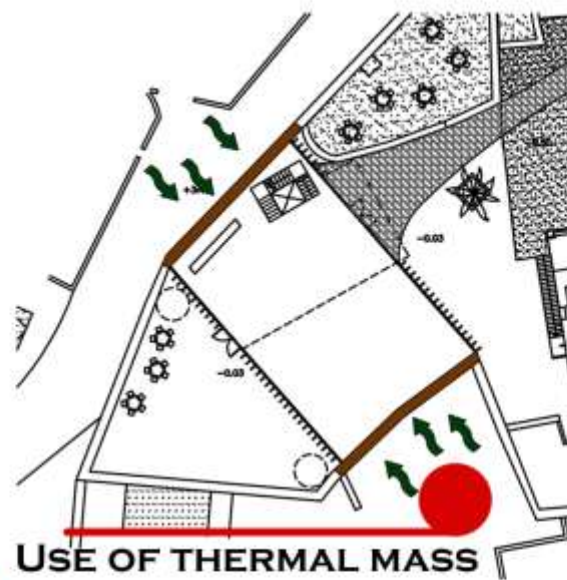


**NARROW ENTRANCE
USELESS**

THE PLAN AFTER



**WIDE ENTRANCE
MORE USEFUL**

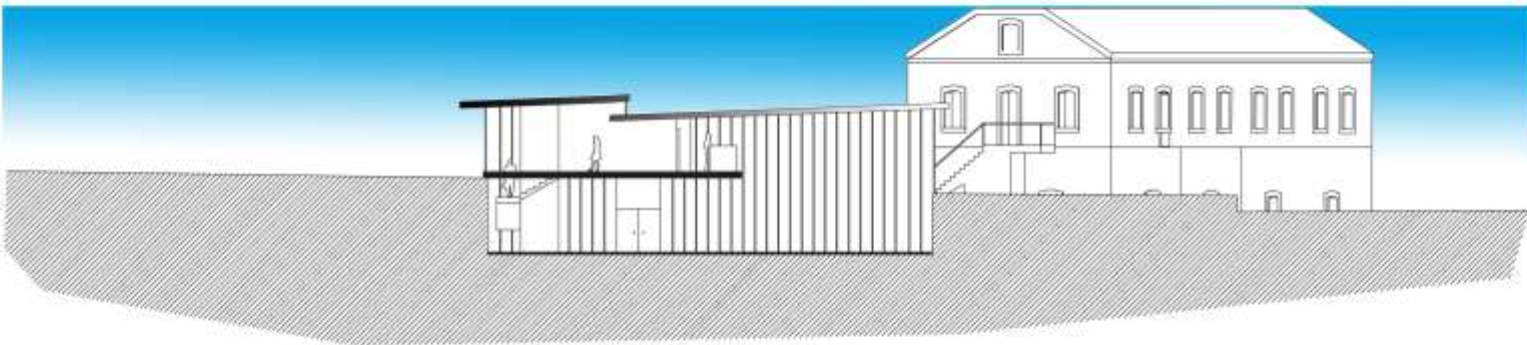
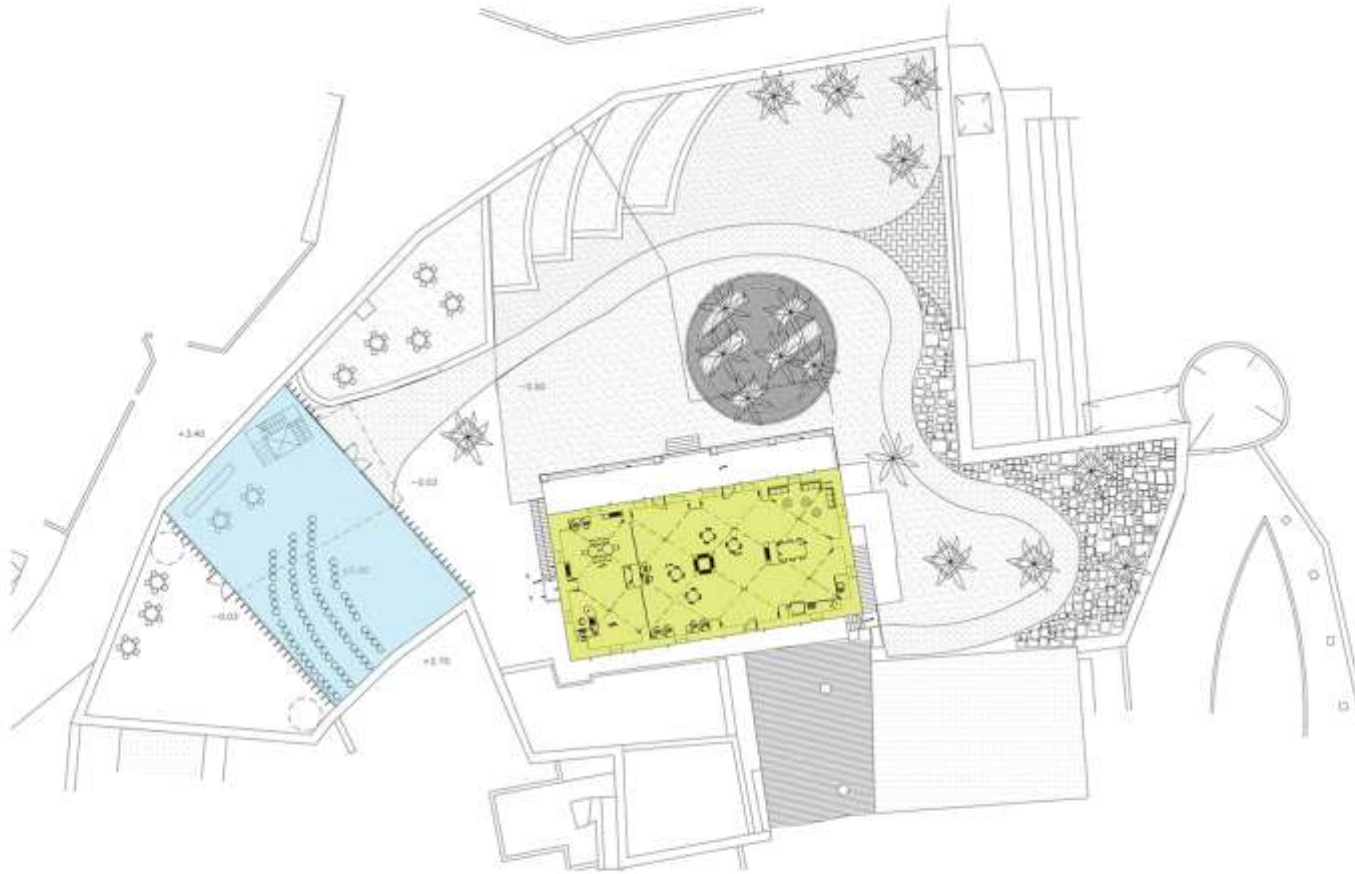


**USE OF THERMAL MASS
FROM THE SOIL**

THE PLANS BEFORE/AFTER

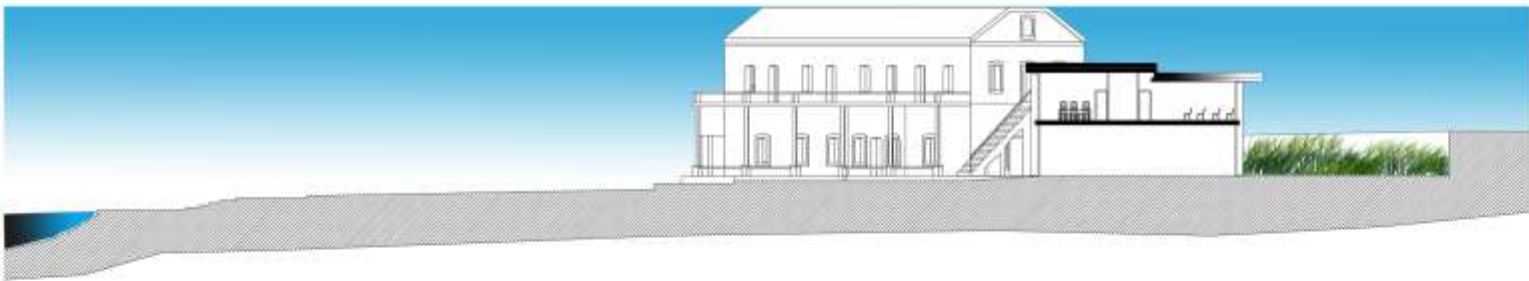
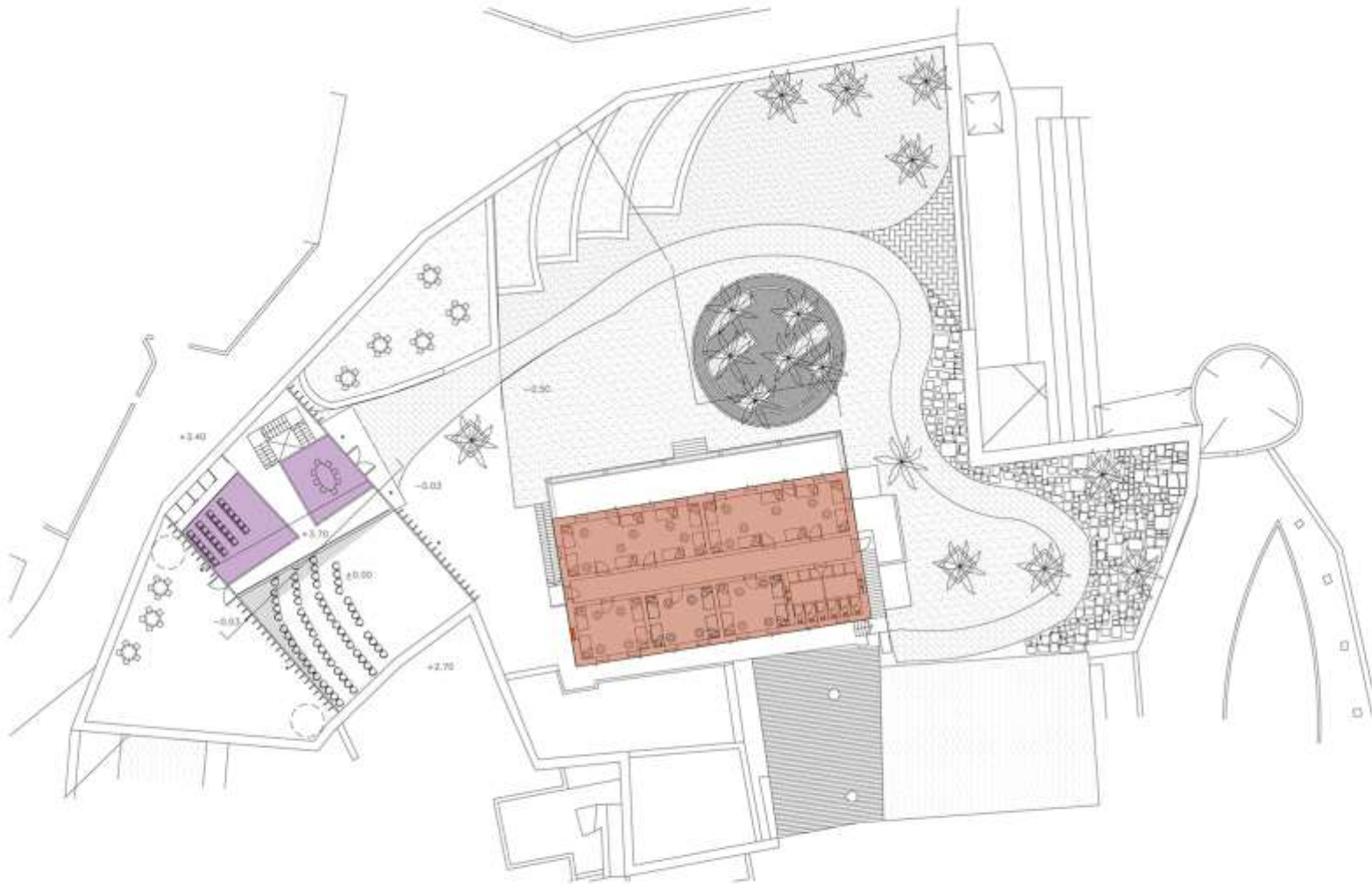


GROUND FLOOR

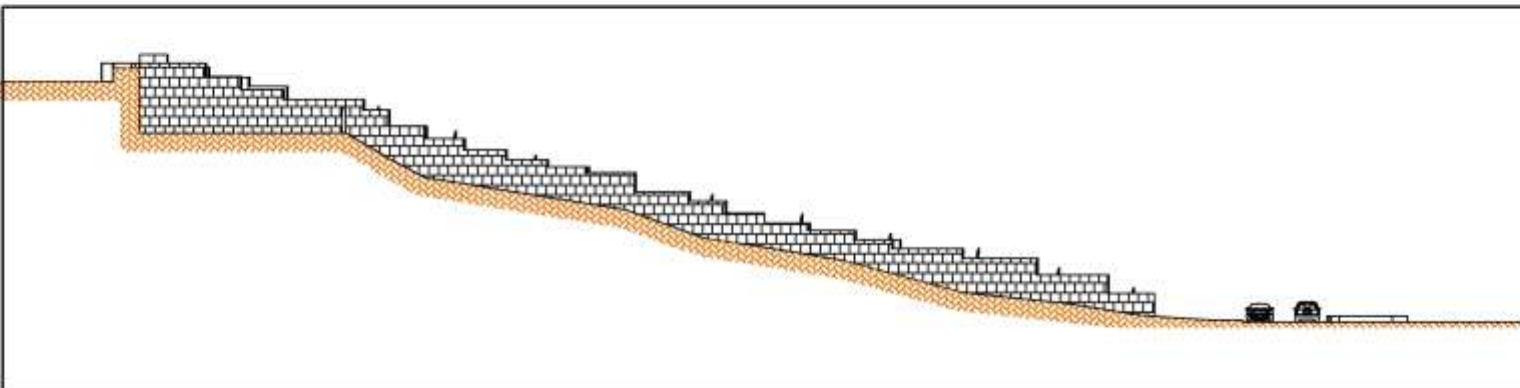


THE PLAN/SECTION

SECOND FLOOR



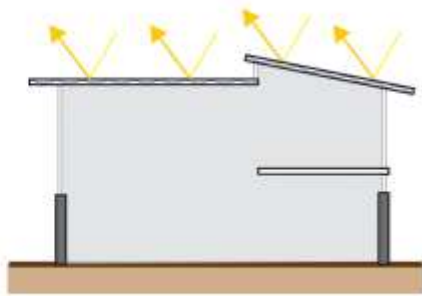
THE PLAN/SECTION



THE PLAN/SECTION

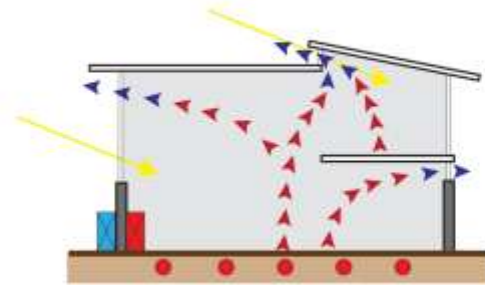
Developing sites connecting to and enhancing existing infra-structures, buildings and landscapes.

Land use	Reclaiming ecologically disturbed area and waste land, maximising use of plot
Water	Retaining, collecting and purification of rainwater and dew for irrigation & toilets,
Waste	Reduction of construction waste, reuse of materials on site, recycling facilities
Energy	Natural ventilation and lighting, shading, passive heating (solar gains) cooling with boosters (fans, heat recovery), use of solar lighting for gardens, use of thermal mass in existing building and floors in new.
Transport	Pedestrian and disabled access, bicycle storage, proximity to bus / boat services.
Biodiversity	Retaining and enhancing local plant species, creating place for birds, butterflies, small reptiles and animals.
Community	Community orientated development, participation in building process use for public (multi-generational) and community gathering and events, promoting peace and reconciliation processes at local and international levels.
Materials	use of reclaimed materials throughout, on site, i.e. rocks, stones, use of low embodied green sourced, recycled and recyclable materials,
Well being	creating healthy & harmonious, accessible recreation areas, quiet retreats
Heritage	design relates to architectural and cultural heritage enhancing old city walls. and existing listed building, prompting cultural dialog.



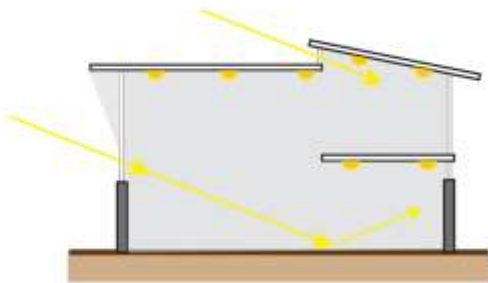
ENERGY STRATEGIES FOR BUILDING (NEW)

ENVELOPE: REFLECTIVE ROOF
 STRUCTURAL INSULATION PANELS (ROOF)
 DOUBLE GLAZING
 DOUBLE ENVELOPE – GLAZING & SHADING
 THICK STONE WALLS (PARTIALLY ON 2 ELEVATIONS)



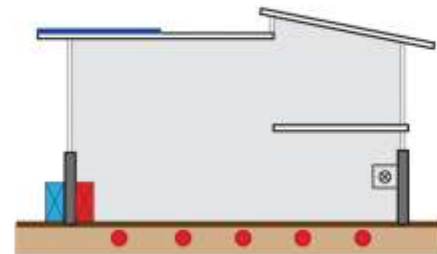
HEATING:

DIRECT GAIN (LOW SUN IN WINTER)
 HEAT RECOVERY
 INDIRECT GAIN (FLOORS, WALLS)



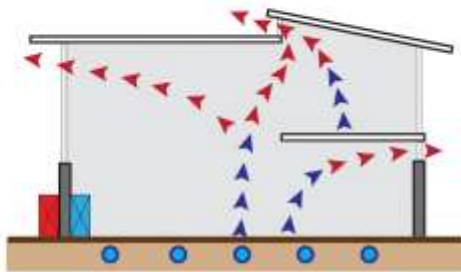
LIGHTING:

TOP LIGHTING
 INDIRECT LIGHT
 SITE LIGHT
 INTERNAL EXTERNAL REFLECTORS (ABSORBERS)
 SHADING DEVICES
 LED LIGHTING (SOME SOLAR POWERED)



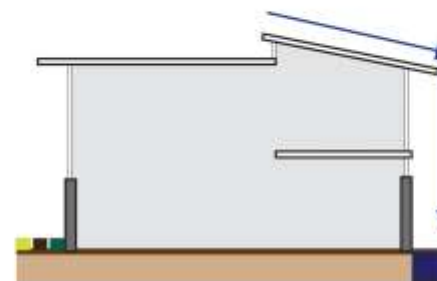
ENERGY EFFICIENCY:

AIR TO AIR, HEAT EXCHANGES
 SOLAR POWER FOR LIGHTING
 CONTROLS FOR HEATING AND COOLING,
 LIGHTS, COMPUTERS



COOLING:

STACK VENTILATION
 CROSS VENTILATION (WITH FANS)
 NIGHT VENTILATION
 EARTH COOLING TUBES (OPTIONAL)
 HEAT / COLD RECOVERY



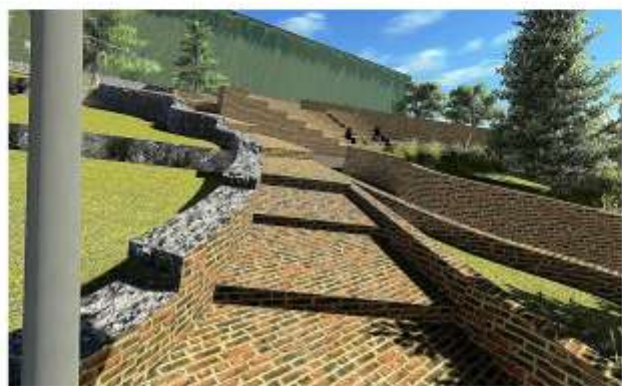
WASTE AND WATER:

WATER CATCHMENT, REUSE FOR
 FLUSHING TOILETS AND IRRIGATION
 RECYCLED AND GREEN SOURCED

THE ECO SCHEME



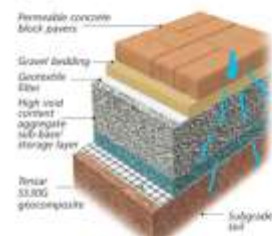
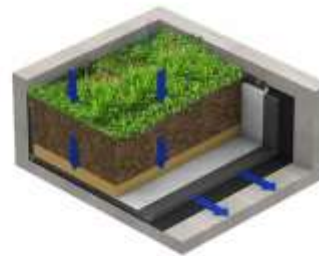
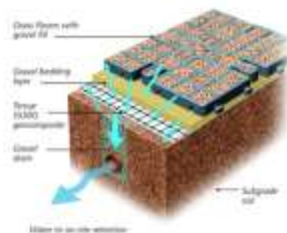
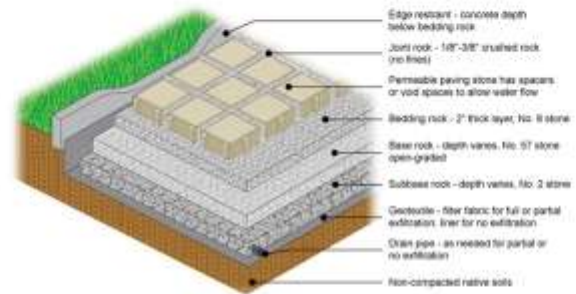
3D LOOKS



3D LOOKS



Reed is a water plant and therefore has to brave the elements. It is especially resistant to moisture and has a very sturdy structure. Ideal preconditions for an outdoor building material. They are not only appealing to the eye they are also a natural building material and thus a contribution to the protection of our environment. This kind of products provide protection from gazing, sun and wind applicable for the garden, balcony terrace, garage and carport. They are easily and quickly installed, biologically harmless and cost-saving.



MATERIALS