

# Ecoweek 2012 - W3

Walaa Abu Assab

Shani Vaknin

Zuriel Ozeri

Nir Zarfaty

Ayelet Levy

Hilla Gordon

Nitzan Gabay

Gilad Gartziany

Ihab Alkateeb

Ulf Meyer, Architect, Germany

Uli Molter, Geographer, Germany

Yael Hammerman-Solar, Architect, Israel

Barak Pelman, Architect, Israel

Guy Teomi, Architect, Israel

# Observation Katamonim 8-9

separation

Lack of amenities

Gazelle Valley

Sports Quarter

Public Spaces

Accessibility



# Suggestion

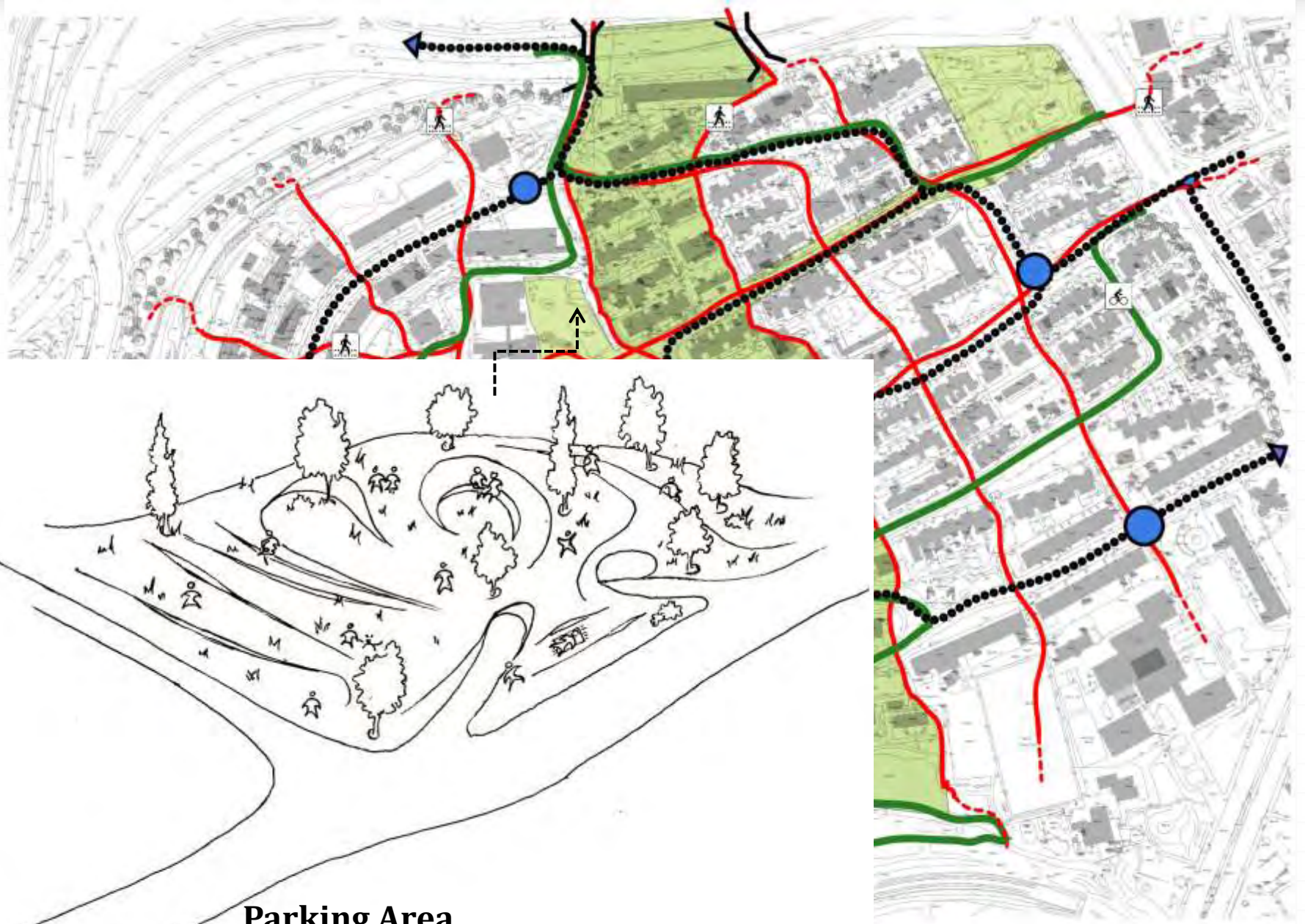
Gazelle Valley



Neighborhood Entrance suggestion

Public Spaces

Accessibility



**Parking Area**

# Development - horizontal green alley - Day/Night

## Development - vertical green alley



Public Spaces

Accessibility

Low maintenance

Small apartments

Low variety of apartments  
with no possibility to  
expend

Low insulation of the buildings

Low resistance to earthquakes

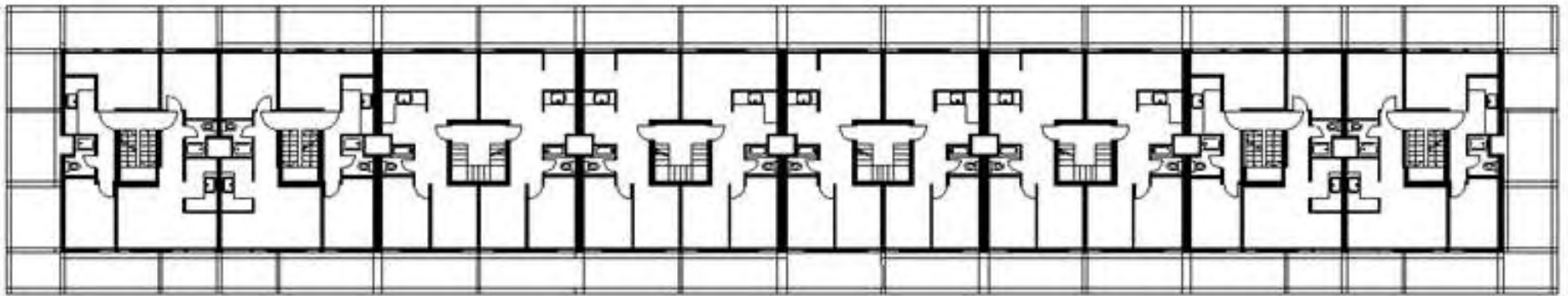
Typical building



Building extension possibilities



Building extension possibilities



Step Frame Grid Plan



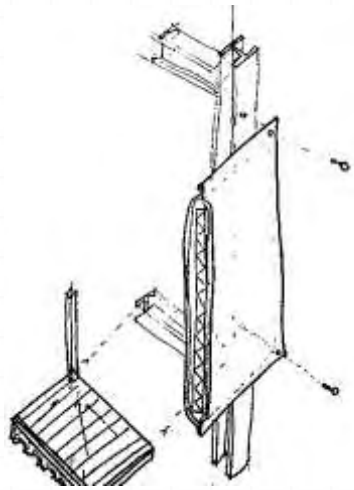
Original extension possibilities



Variety of extensions possibilities

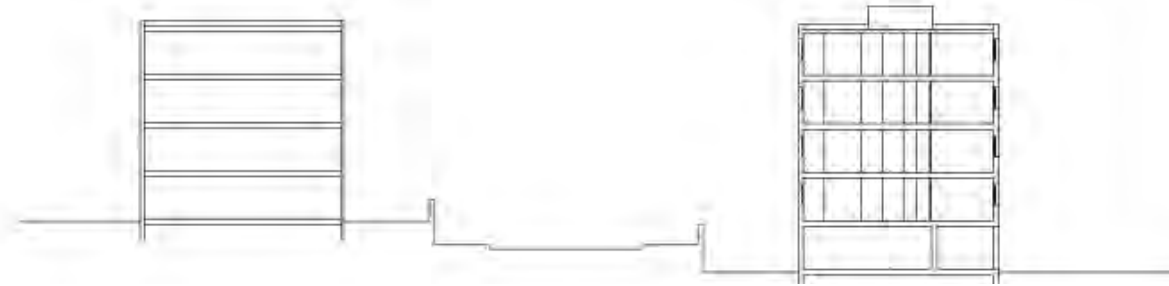
# Building extension possibilities



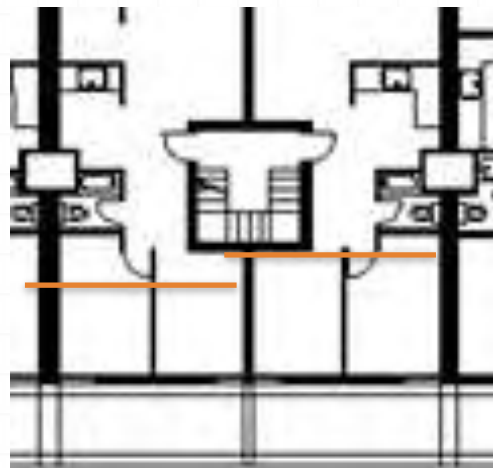
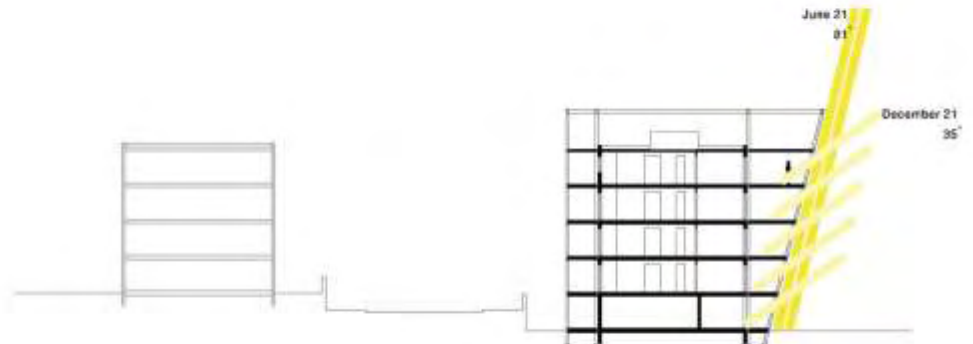


Panels Types

## Existing Section



## New Section



Building extension possibilities

## Optional roof development



## Advantages

Increase density

Better social mix

Decrease heat island effect

Financial source



Building extension possibilities

