

Belgrade Ecoweeek 2012
ECOWEEK
2012 ... habits change ... climate change
W8



THE TOURIST INFO URBAN GREEN INSTALATION
IN BELGRADE CITY CORE

Team leaders Ana Ilić Ivana Petković

Tijana Milanović TijanaPopović Tijana Trifunović

Ana Stevanović Andrea Čutura Dijana Dejanović Jelena Ilić Jelena Petrović Marina Đokić Stefan Radovanović

Concept

Tourist info green installation

Public enjoyable urban green extension:

- to promote healthy image of the city and give information to tourist about the city
- to educate the public (all different population groups) about need for recycling and about clean energy systems

We plan to attract people to use this installation because here they can:

- get informations for better navigating in the city
- recycle and be rewarded for that
- charge their phones
- sit and relax
- play (kids)

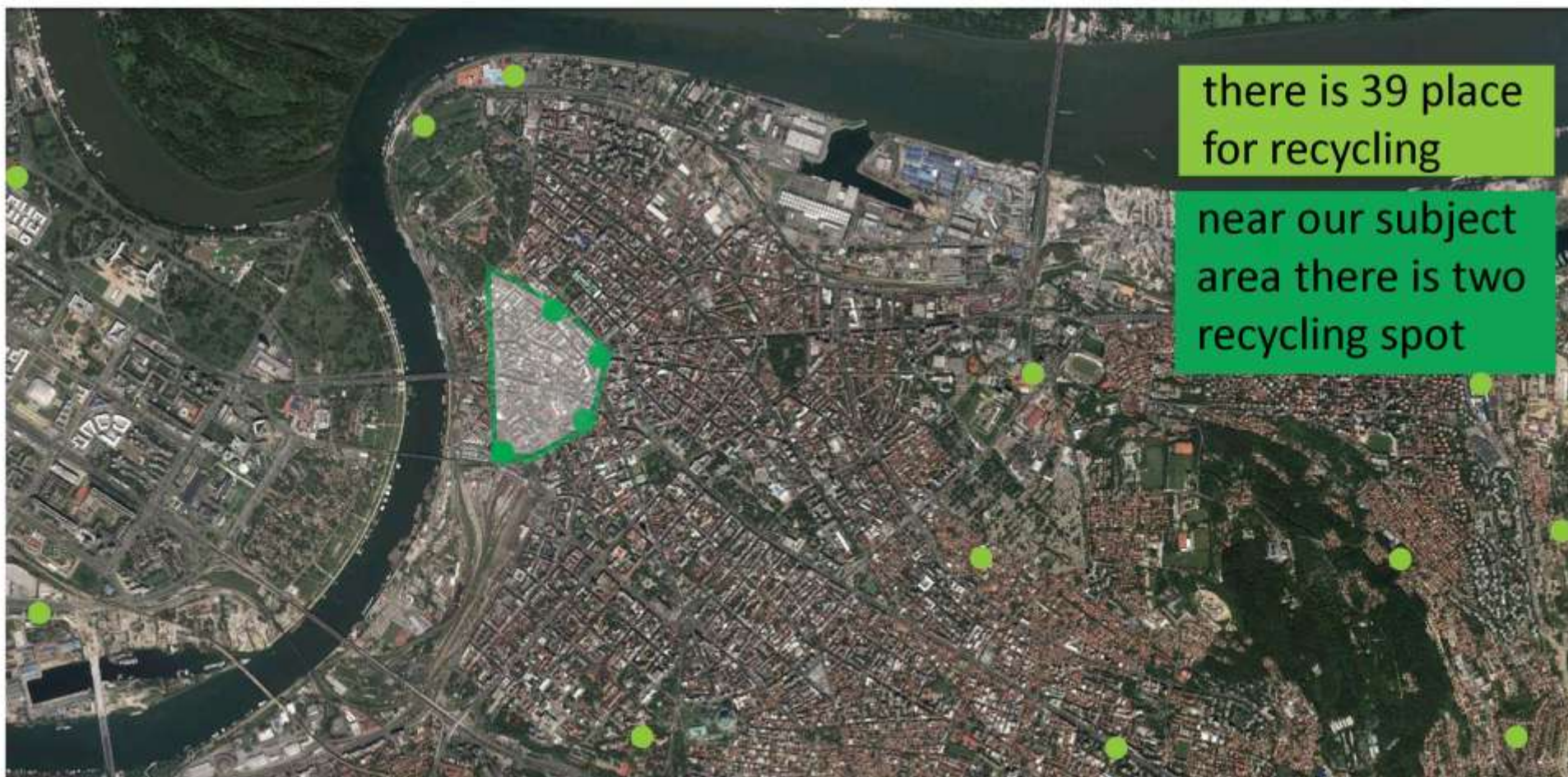
Installation is:

- sustainable
- modular
- easy maintenance
- low cost
- accessible and inclusive





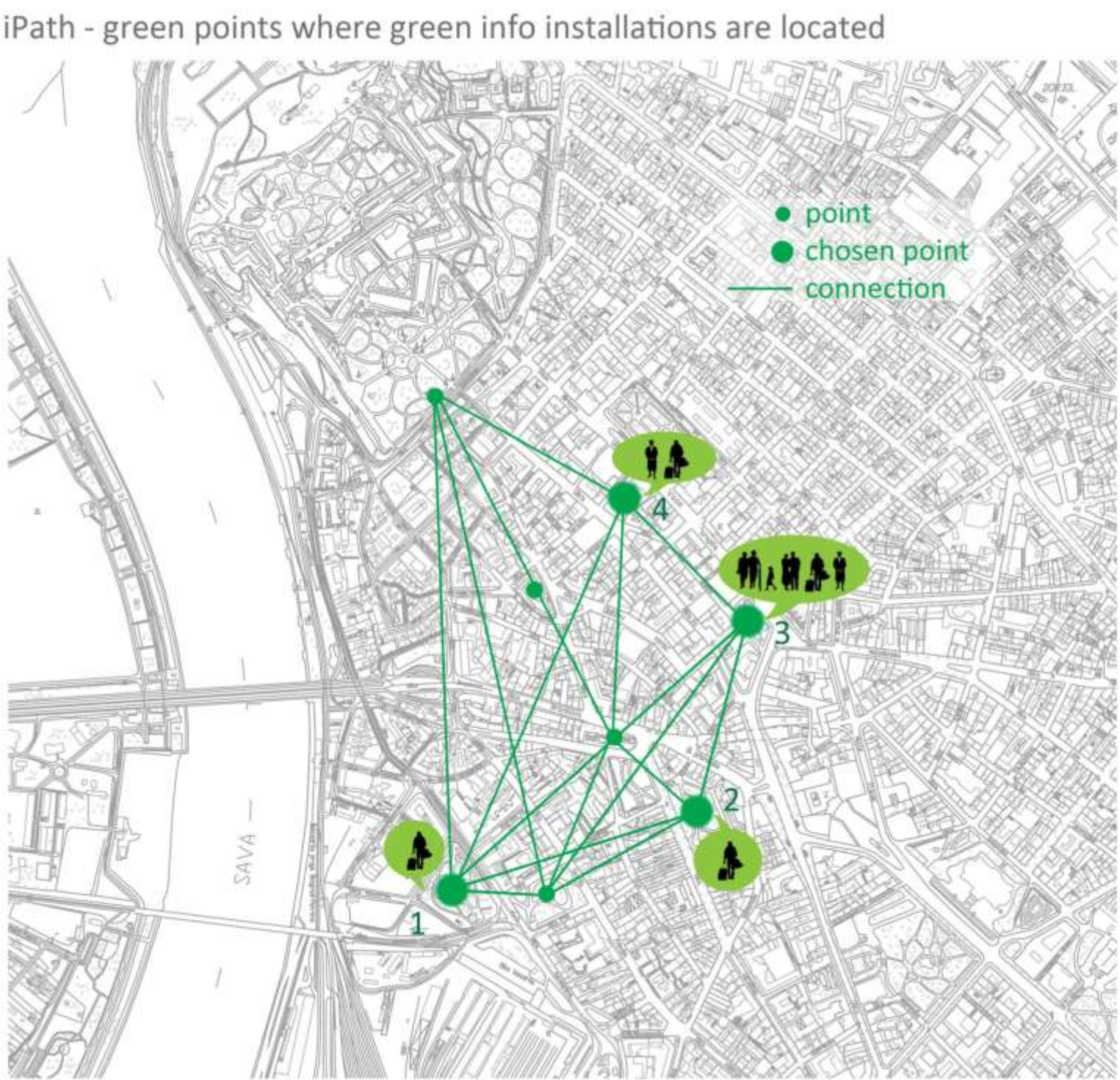
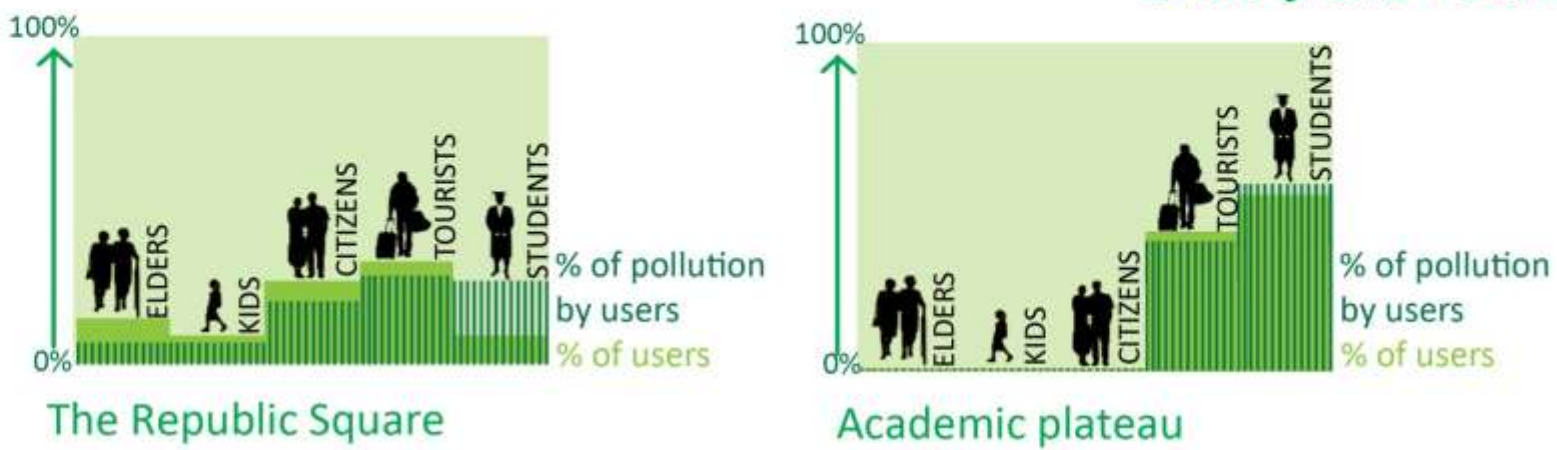
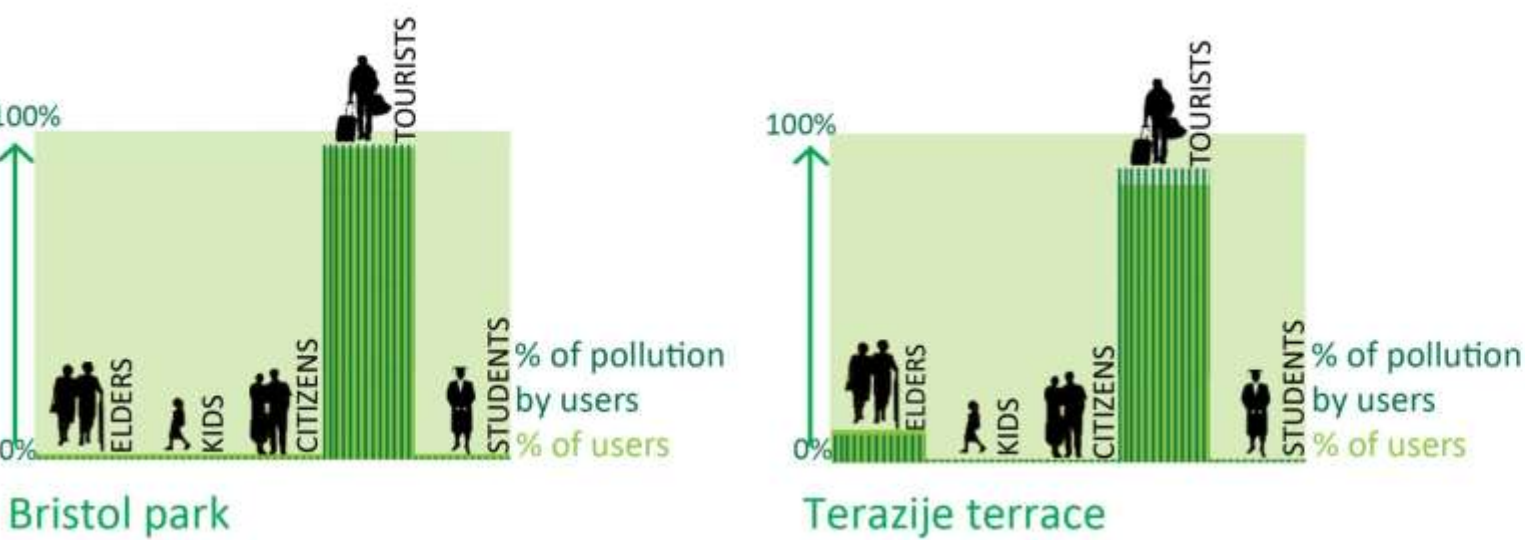
The locations for our installations were chosen for their transitive character



The nearest recycling center is at about 5 kilometers of our path.

We are bringing sustainability closer to people.

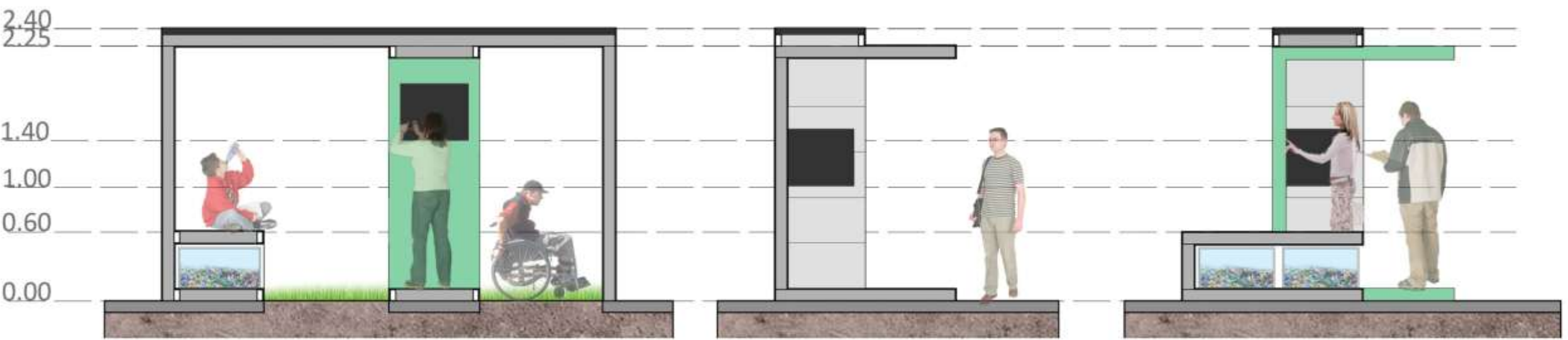
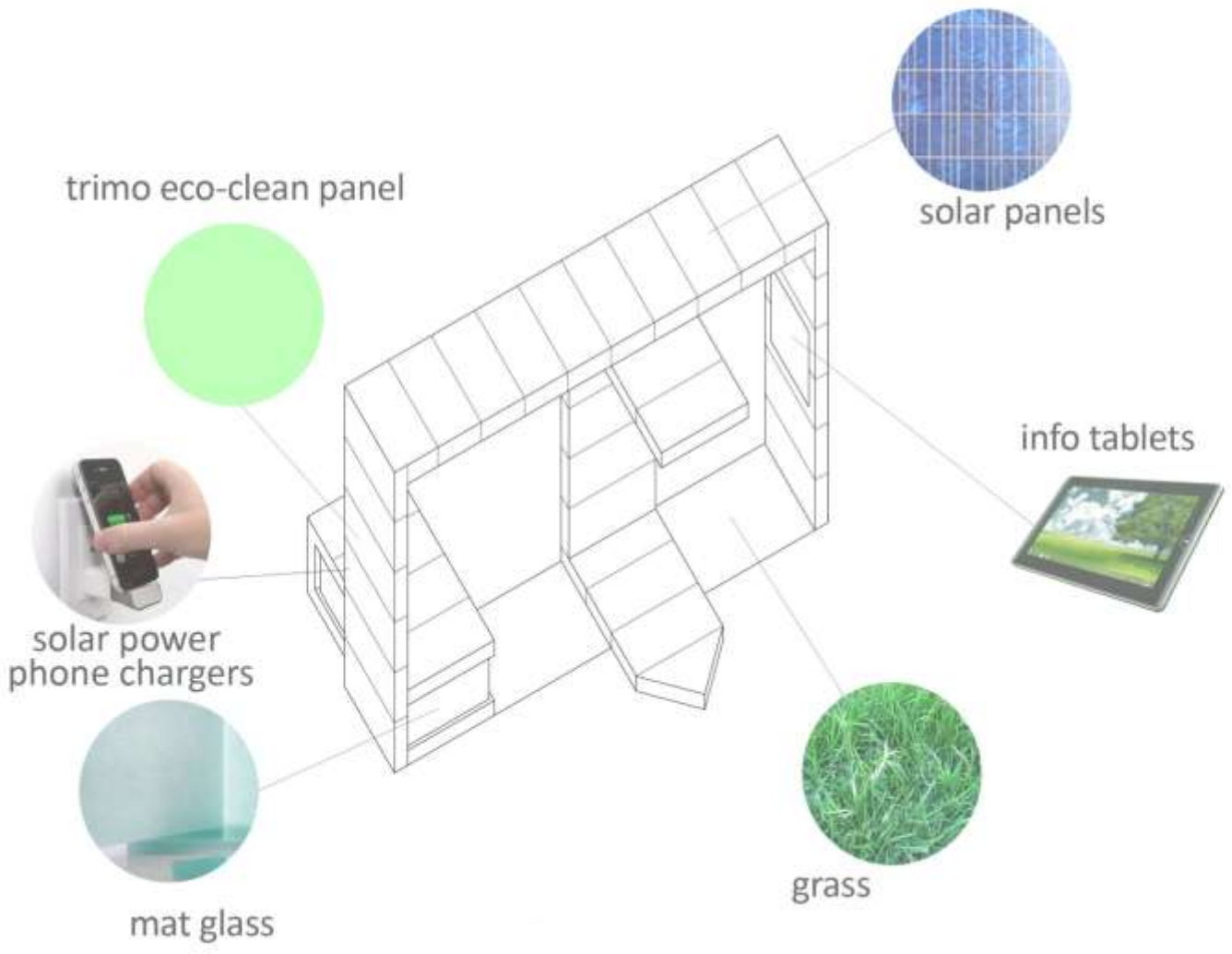
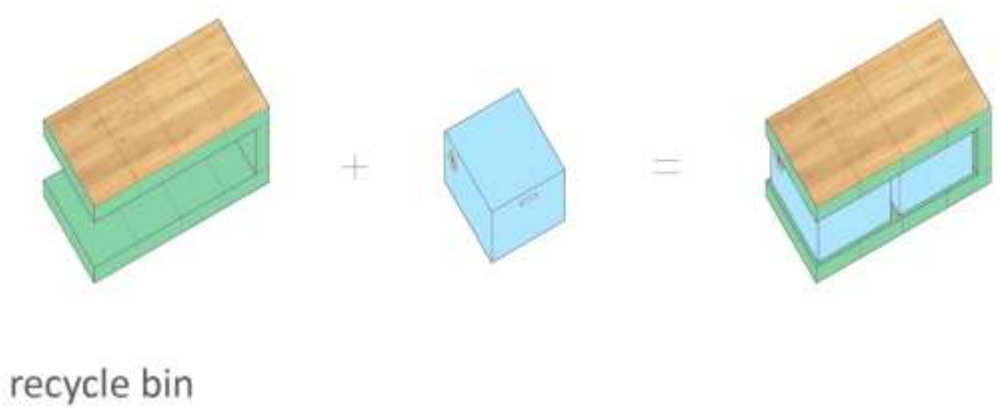
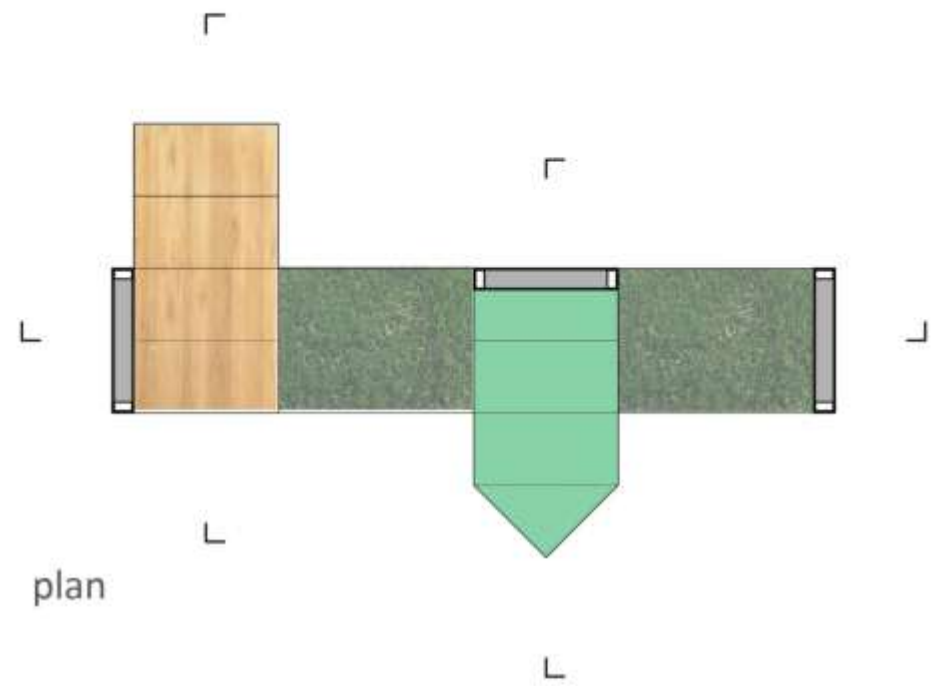
Analysis



chosen location	target population	users needs	pollution by users
Bristol park	tourists	informaton mobile charging break	plastic paper tin
Terazije terrace	tourists citizens		plastic paper tin
The Republic Square	tourists citizens		plastic paper tin
Academic plateau	tourists students		plastic paper tin glass

the analysis of chosen locations and users needs

Installation 1 - Bristol park



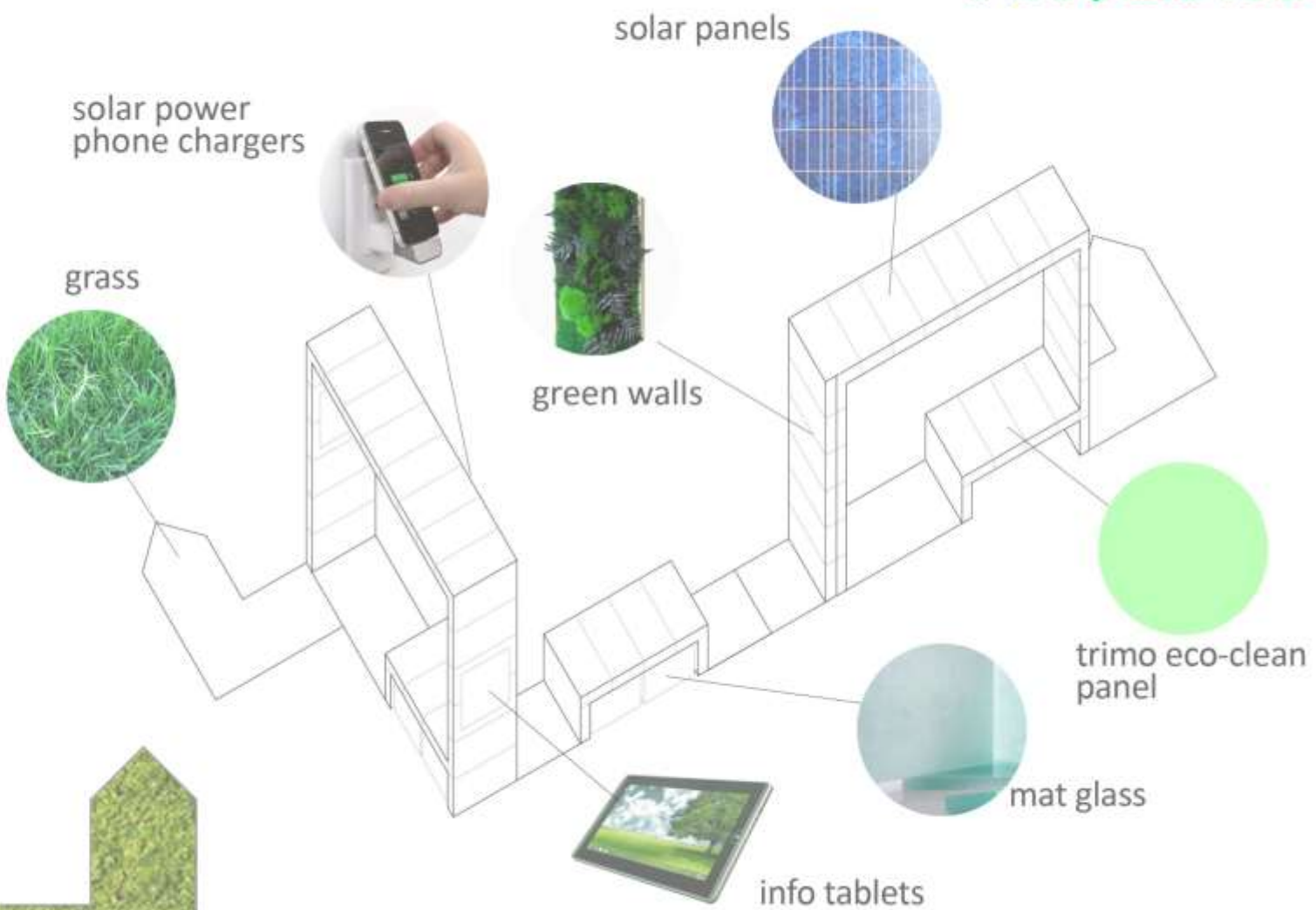
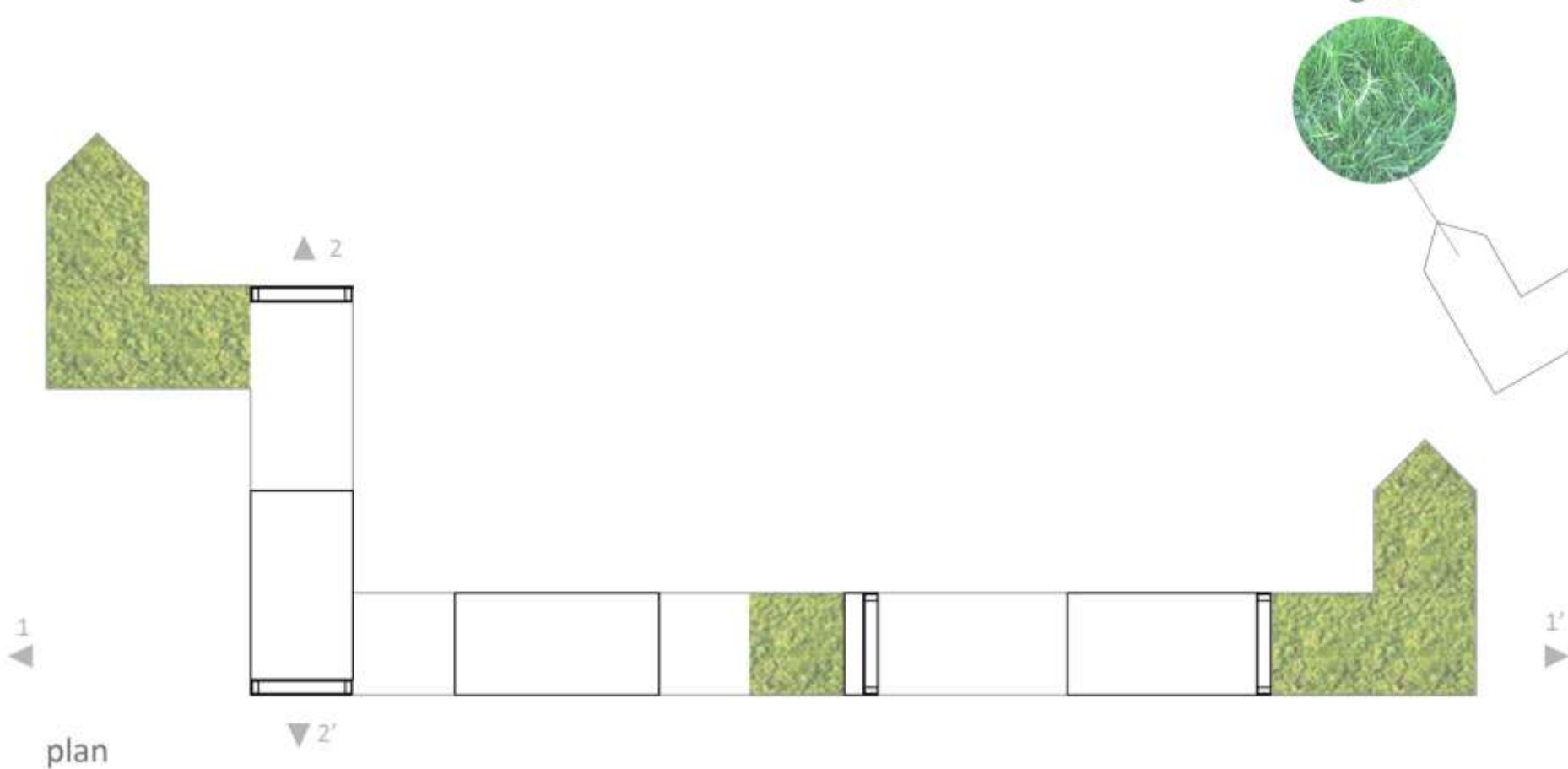
Bristol park is located right next to the main bus station of Belgrade. It is a very **transitive** place with already a lot of benches and spaces for seating and resting, where people don't spend much time. We imagined an **inclusive installation** with readily accessible information for people visiting Belgrade, and with charging stations for cell phones.



Installation 2 - Terazija terrace



Terazijska terrace is located on top of a hill, with a park below where people come with their children. We proposed an installation with a lot of places to sit and **rest**, where kids can play and **learn to recycle** through entertainment. We chose this location because it is also a very **prominent** site with a lot of tourists passing through.

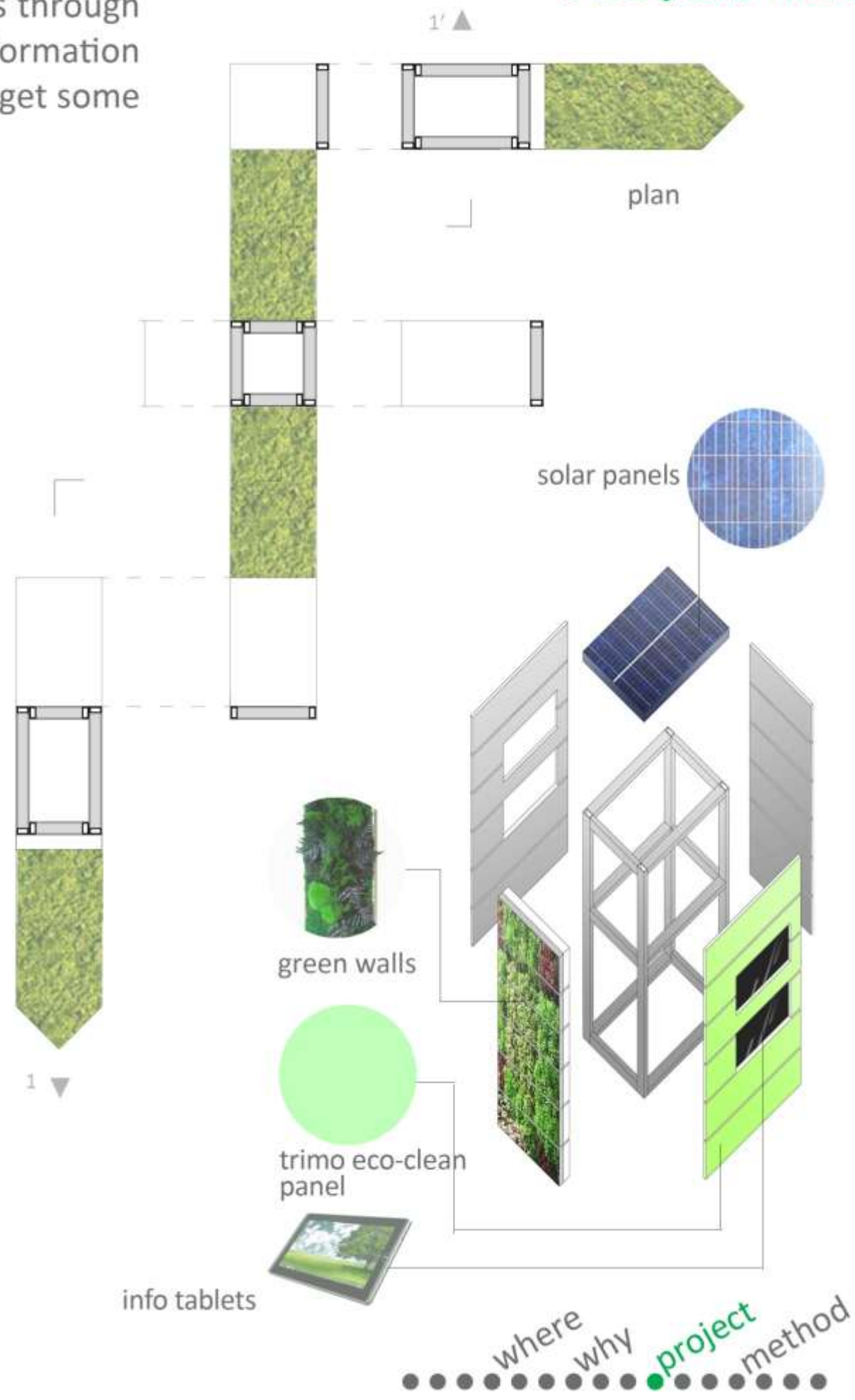
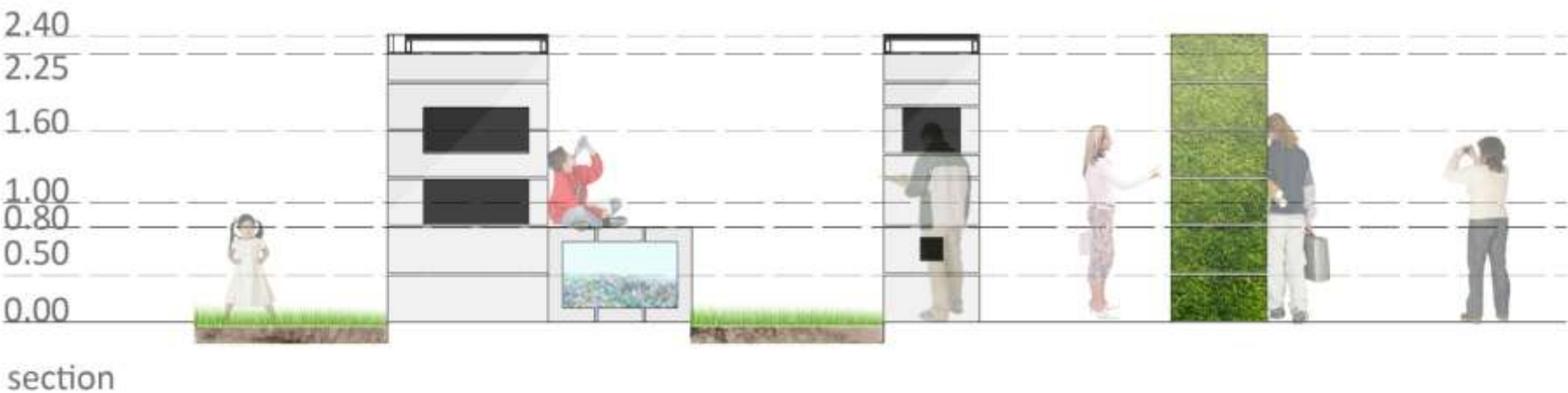




Installation 3 - The Republic Square



Republic Square is the main **largest meeting place** in the city center where people pass through and stay. It is often the starting **point for navigating** around Belgrade. Tourists can get information about the city, transportation, accomodation, where they can charge their phones and get some rest.

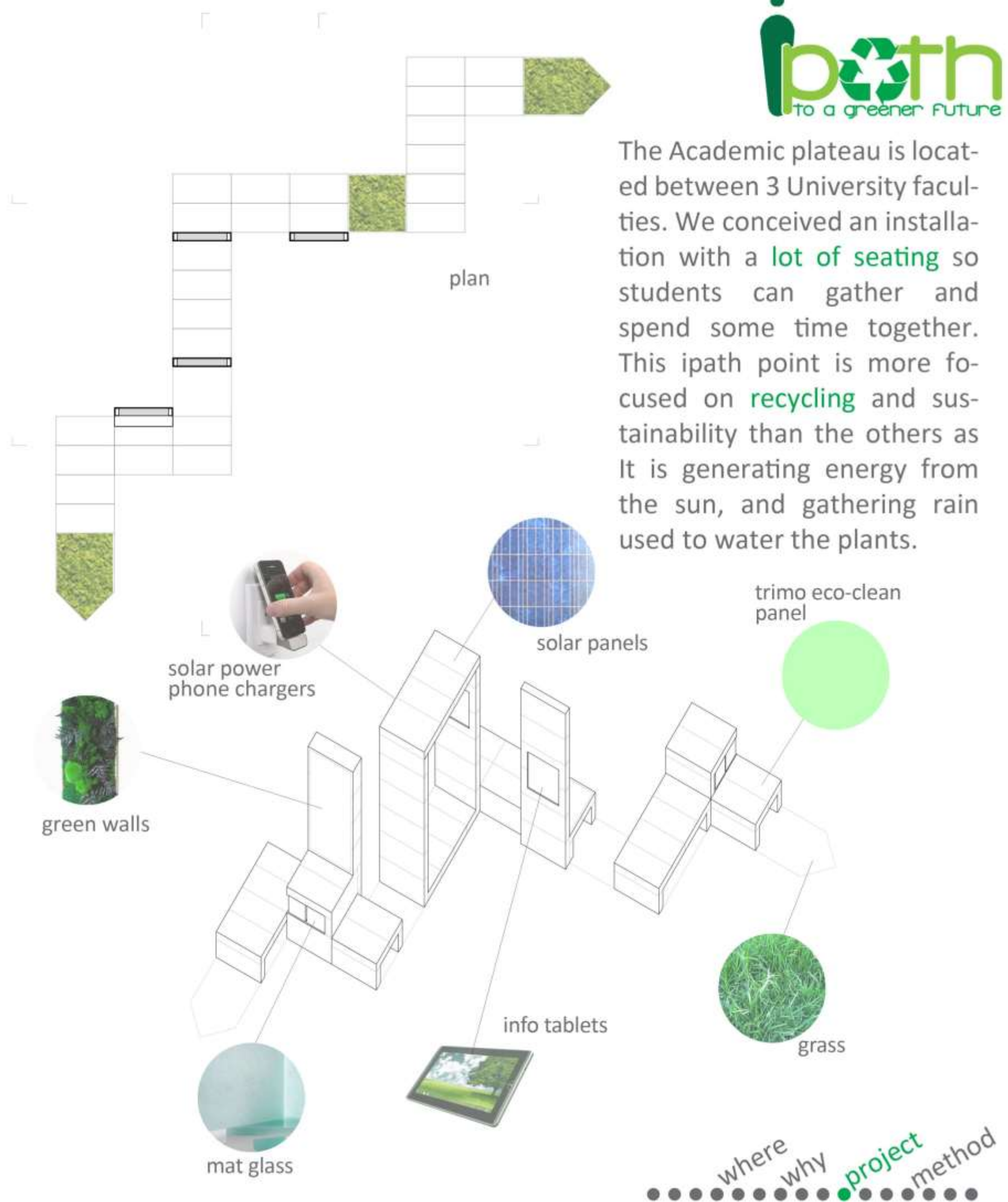
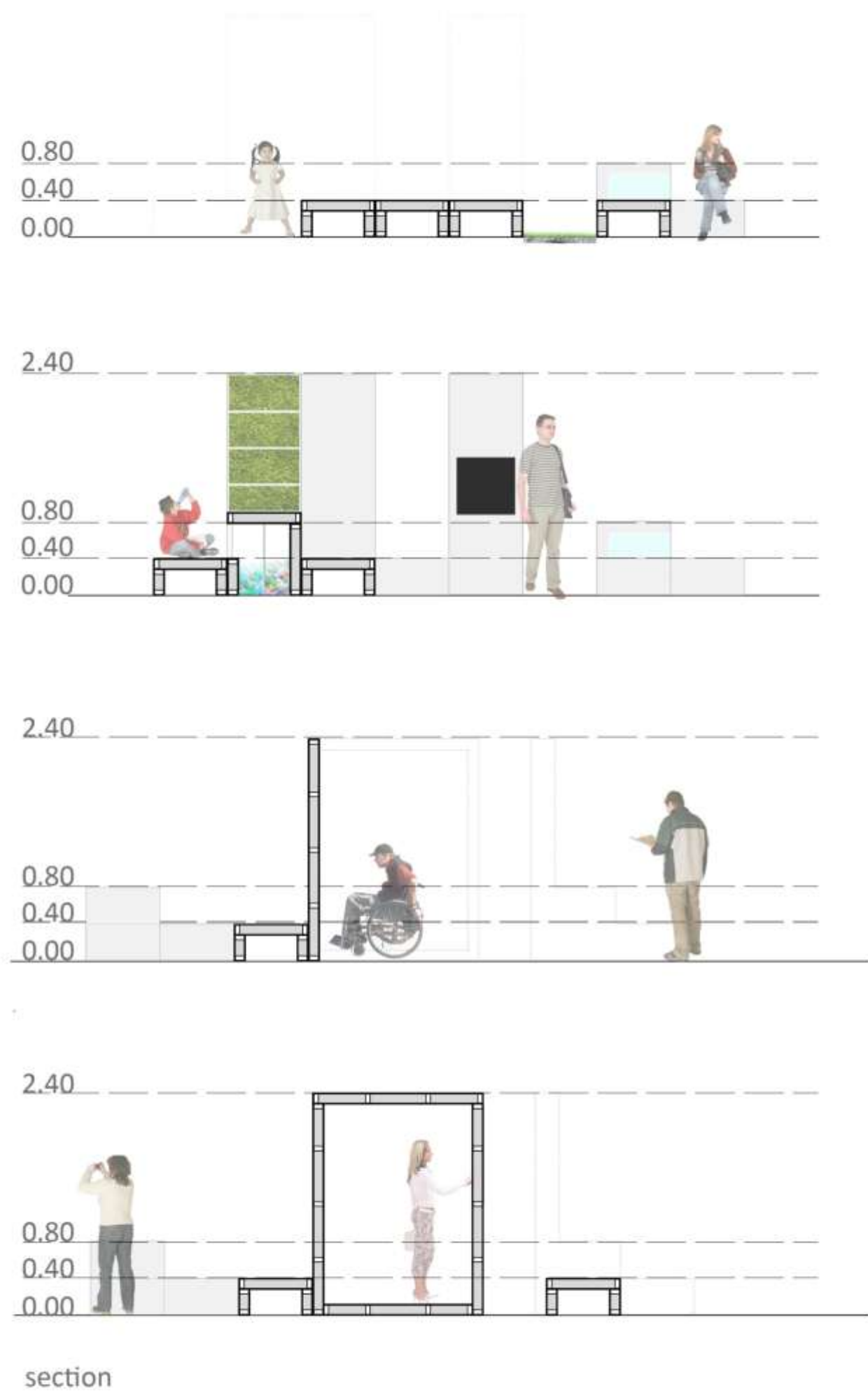




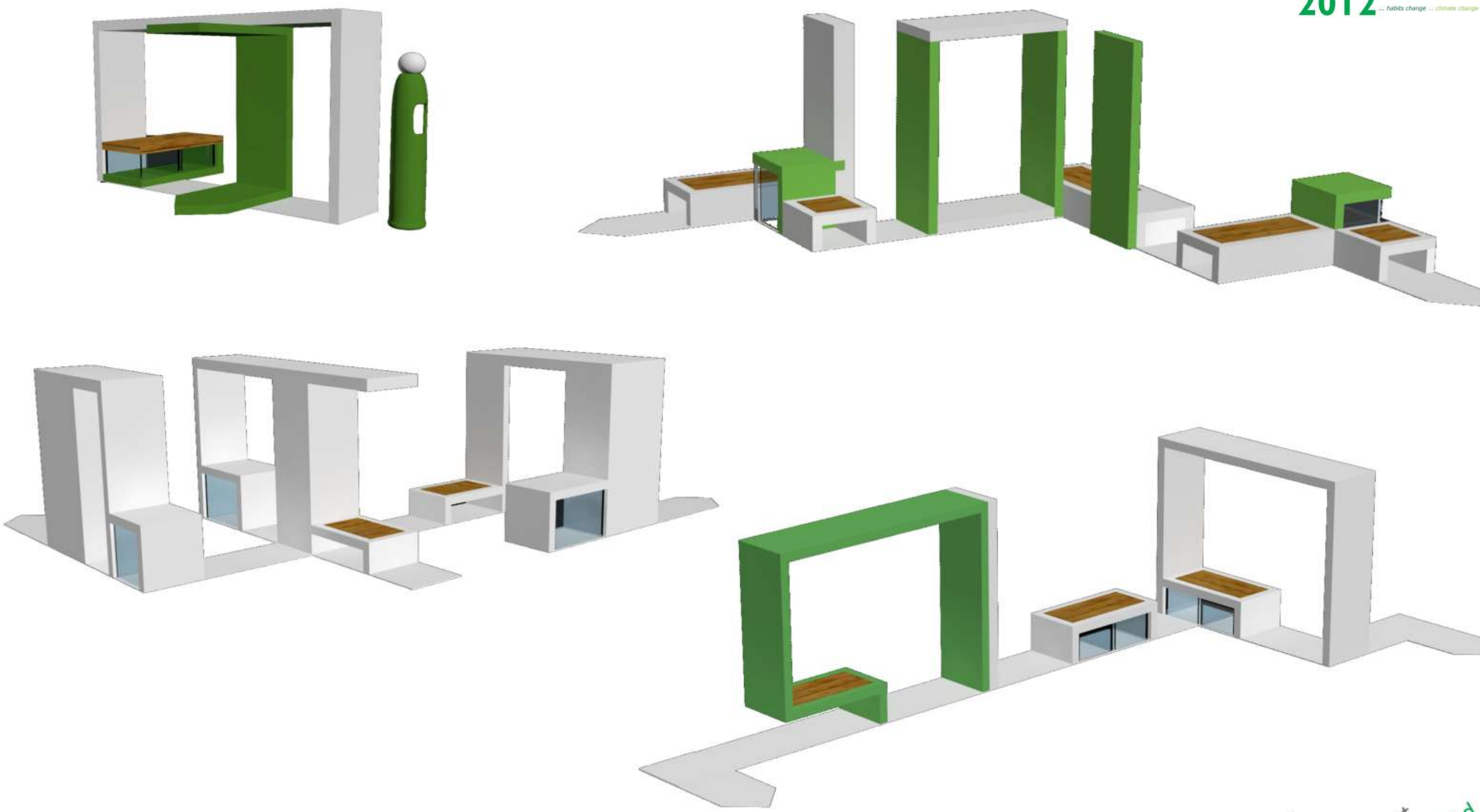
Installation 4 - Academic plateau



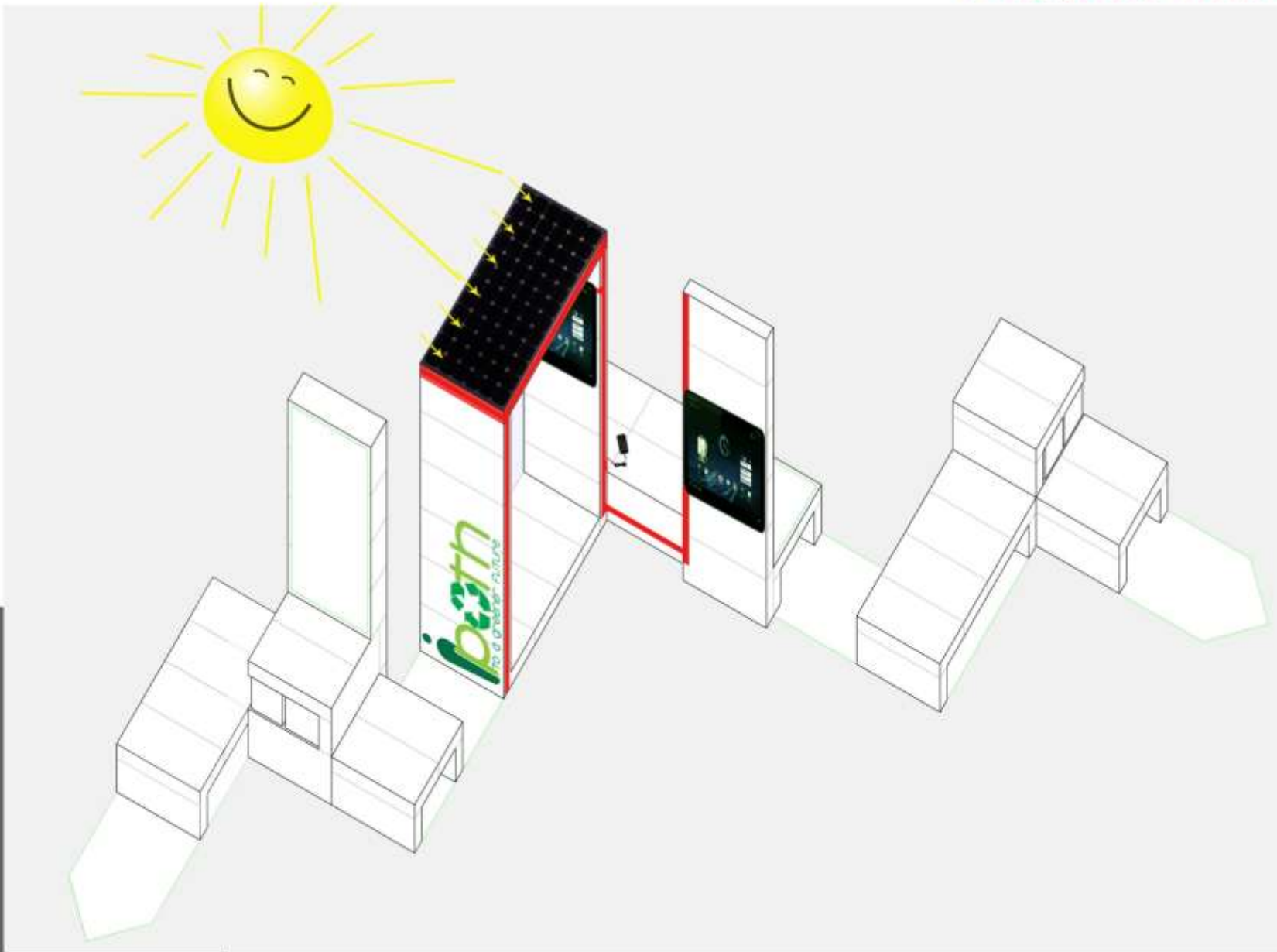
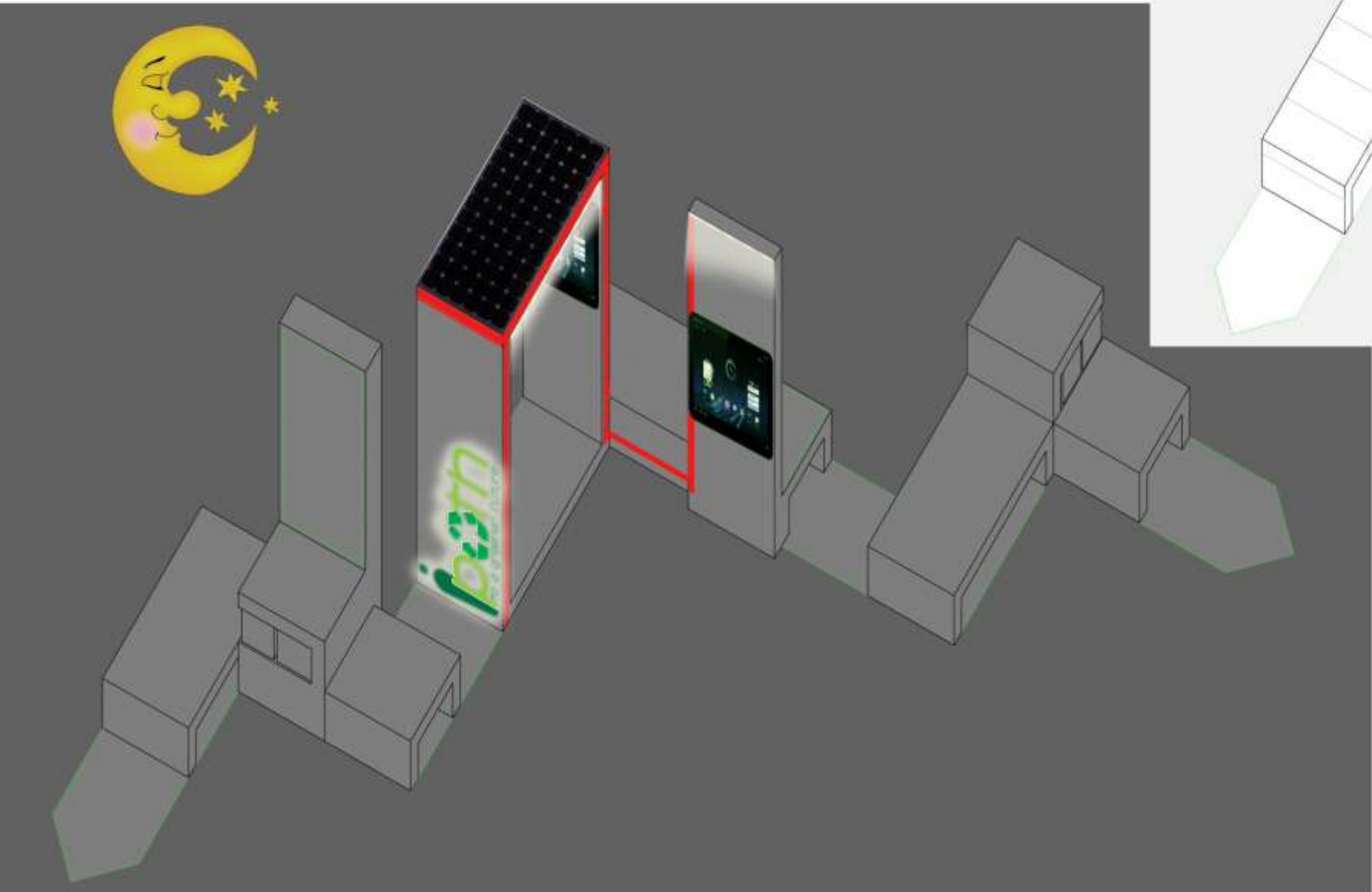
The Academic plateau is located between 3 University faculties. We conceived an installation with a **lot of seating** so students can gather and spend some time together. This ipath point is more focused on **recycling** and sustainability than the others as it is generating energy from the sun, and gathering rain used to water the plants.





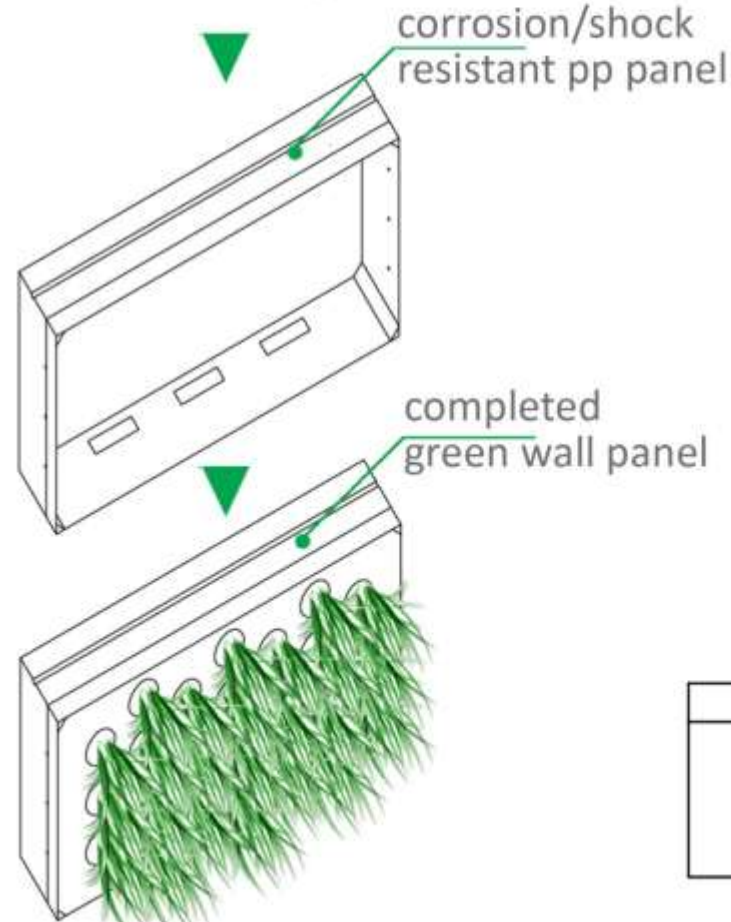
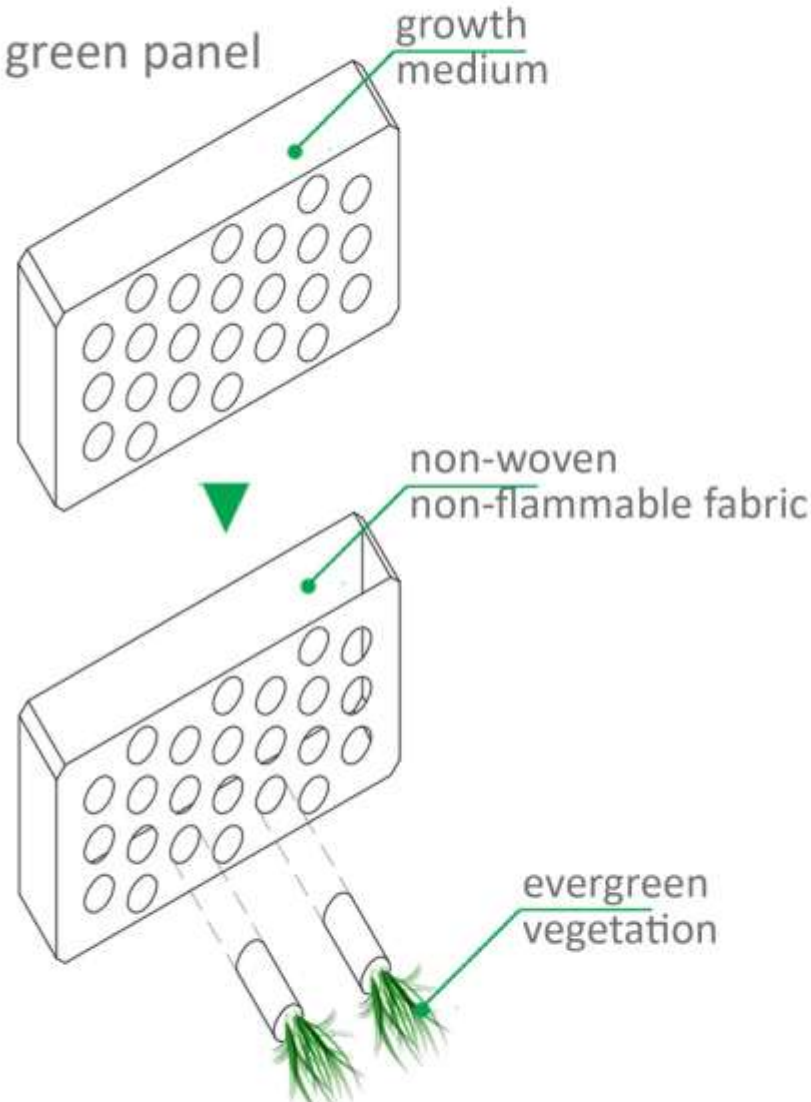


Nightly usng energy

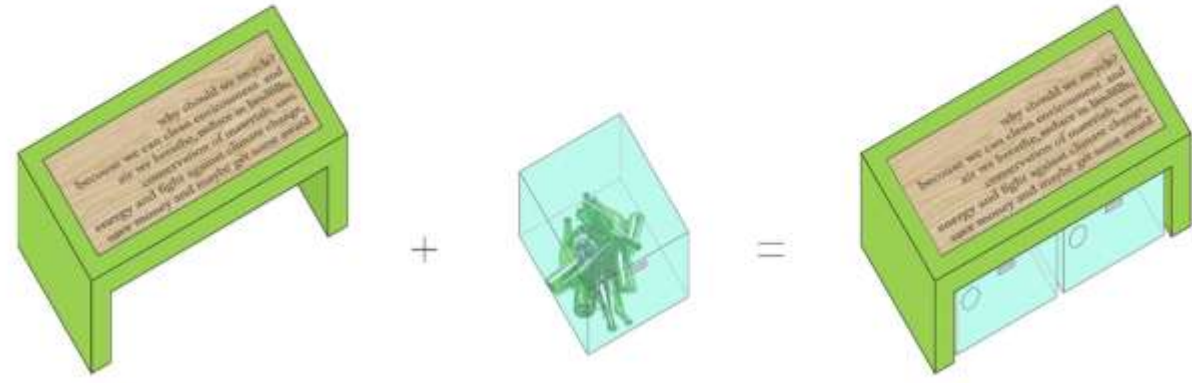


Daily collecting energy

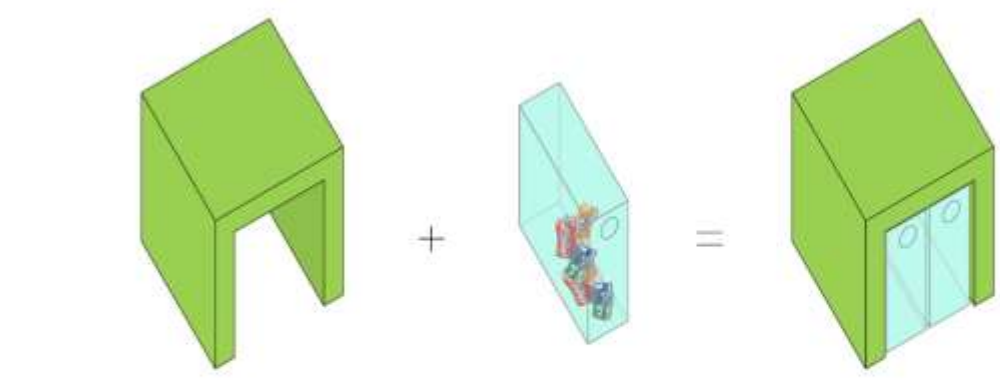
Materials



banch/recycle bin

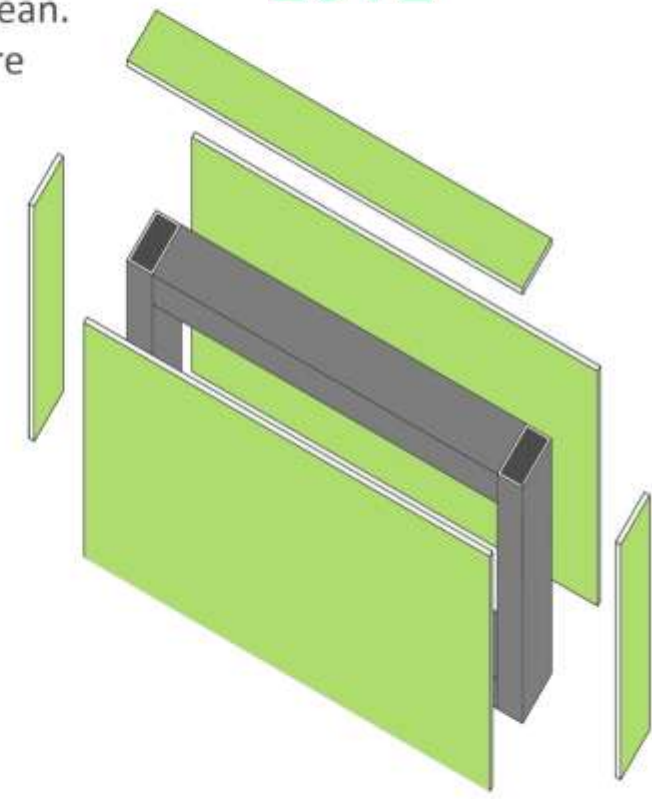


recycle bin

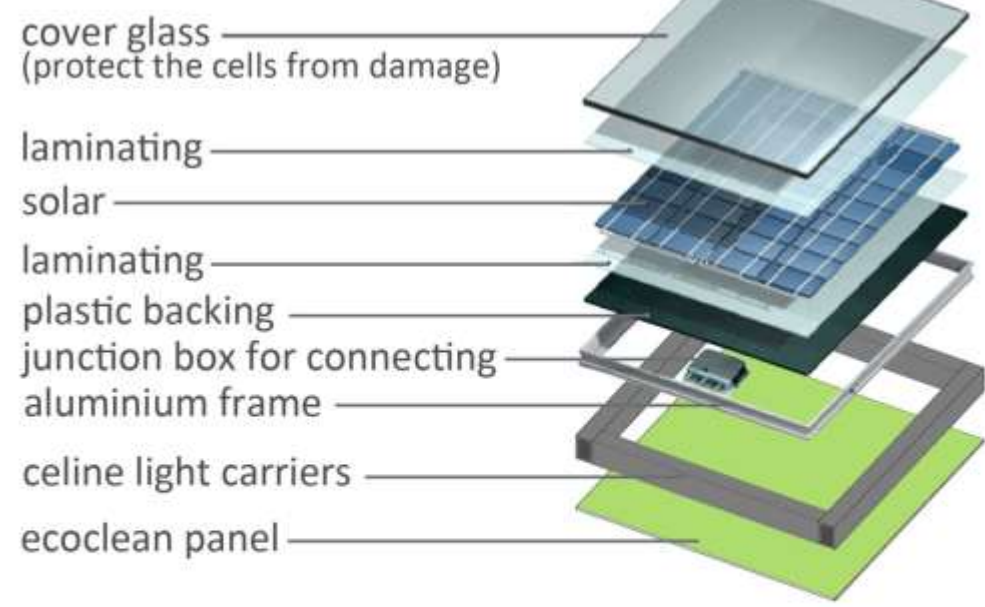


ecoclean panel

Dirt from the panel rainwater washes and maintains them clean. In this way they are sustainable.



solar panel





WALK THE



ECOWEEK
2012 ... habits change ... climate change