



Sustainable Pilgrimage in Azariya



AL AZARIYA
STEPS OF DEVELOPMENT

Team leaders

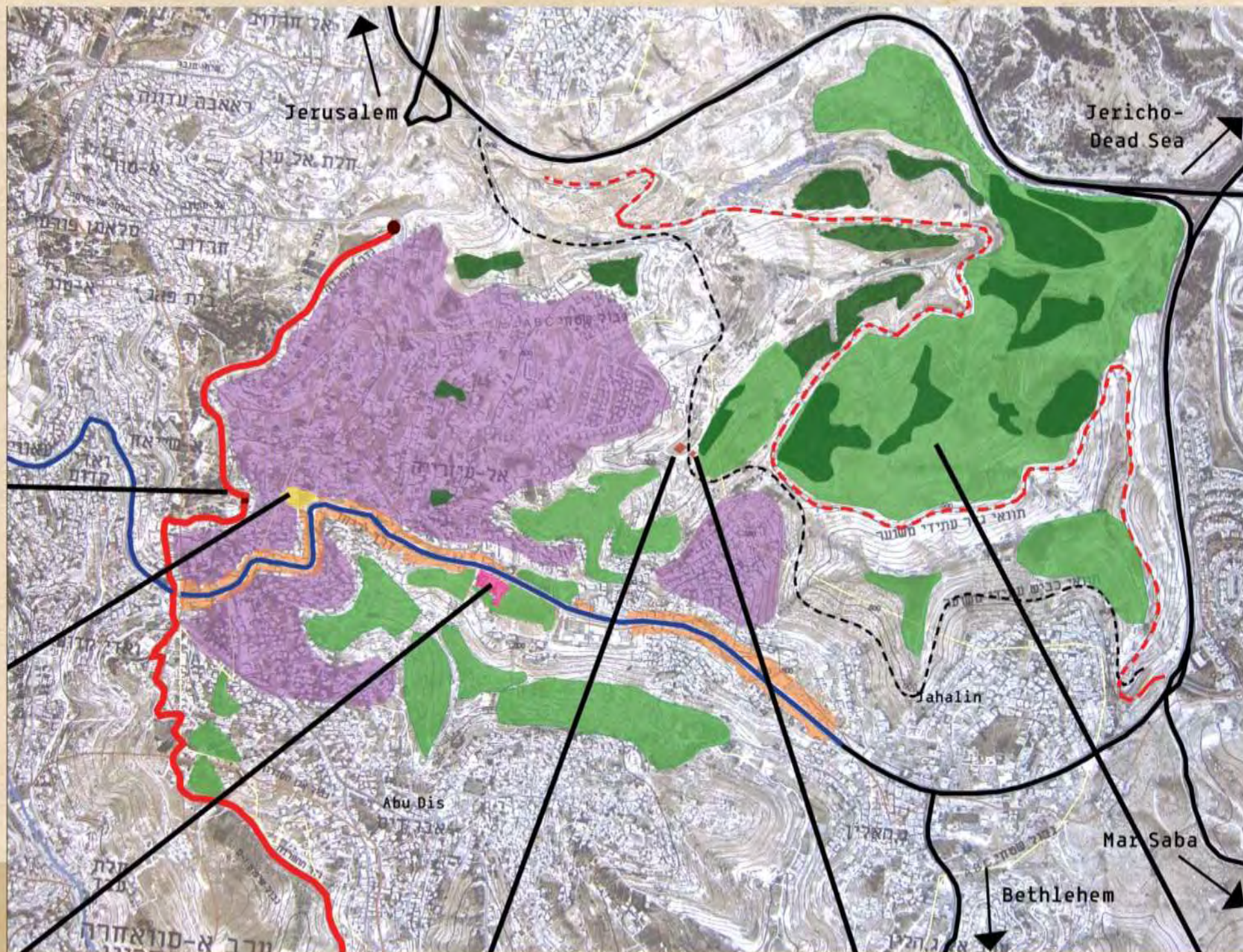
Architect Elias Messinas
Engineer Byron Stigge

Members of the group

Amitai Elul
Erini Loukou
Inaam Sarawi
Luay Monzer Jamil Bader
Muhammad Osama Aburajab
Pinelopi Zoura
Rana Zaher
Sirin hassan
Wala Ayad
Yishai Lehavi

Areal context and potencial





-  main road
-  al-azariya road
-  new planned road
-  separation wall
-  new planned wall
-  green private area
-  green local area
-  commercial area
-  resident area
-  spring
-  khan
-  greek church
-  st. lazarus church



Planning Issues

Tourism potential

Self-sufficiency

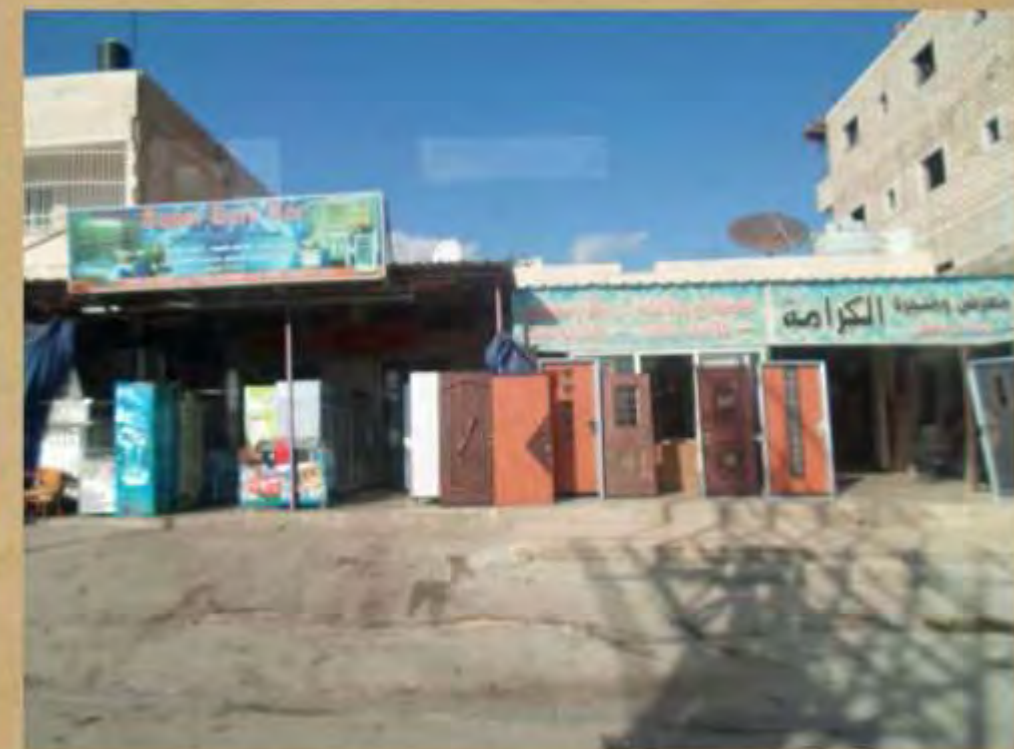
Lack of public gathering places

Flooding sewer and storm water

No defined commercial area

Traffic and parking

Planned separation wall route



General plan - Pilgrimage trail



Using pilgrimage tourism potential as an opportunity for developing the village

Combine the designing of the trail with creating a plan to the village

Promote village pioneer sustainable projects as part of the general plan

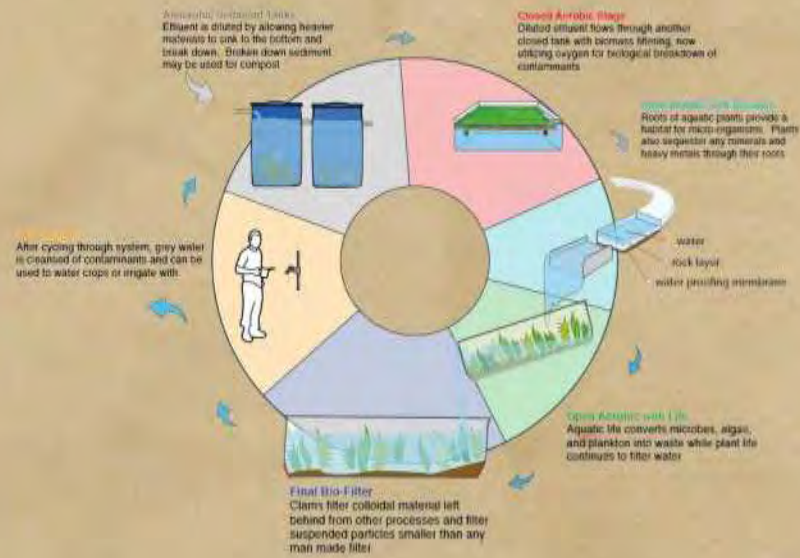
Flow of the rain water and points of collection



Residence - proposed direction of sewer - proposed living machine



Existing situation with the open sewer in the street



Rental farms for the locals



We use a vacant green area, we keep it green and we turn it into an agricultural land where the locals can cultivate their own products.



Also, the tourist can participate and have a more authentic experience of life in Azariya.



So, the village can develop self-efficiency in nutrition needs and be more attractive to more kind of tourists.



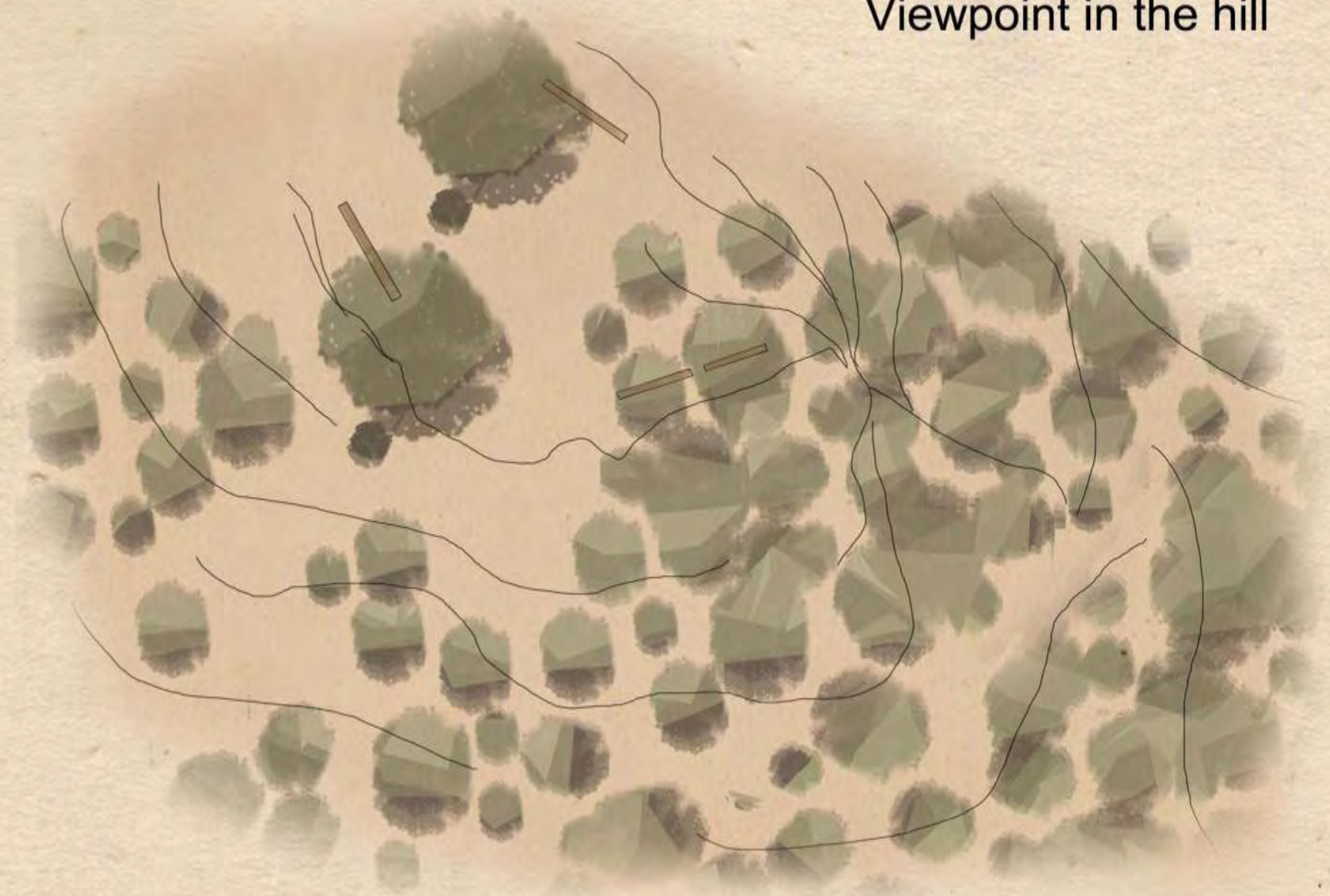
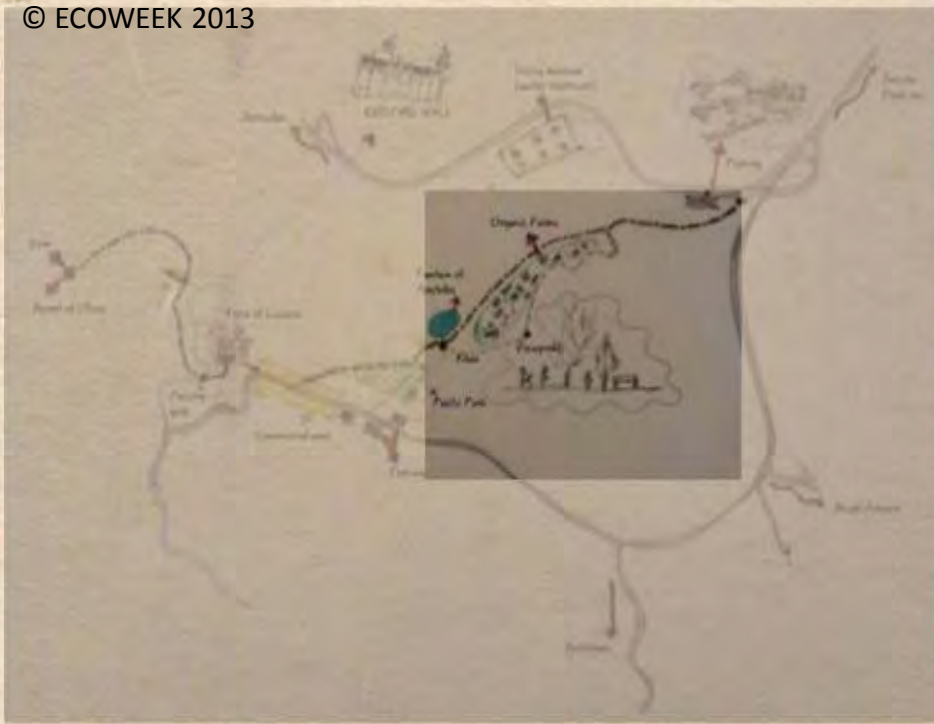
Agrotourism - Hospitality



The empty houses could be used as hospitality centers, after some renovation. Also, some locals could rent their houses to tourists.

Tourists could have a more authentic experience by participating in agricultural activities and in craft making, like in the shoroq.

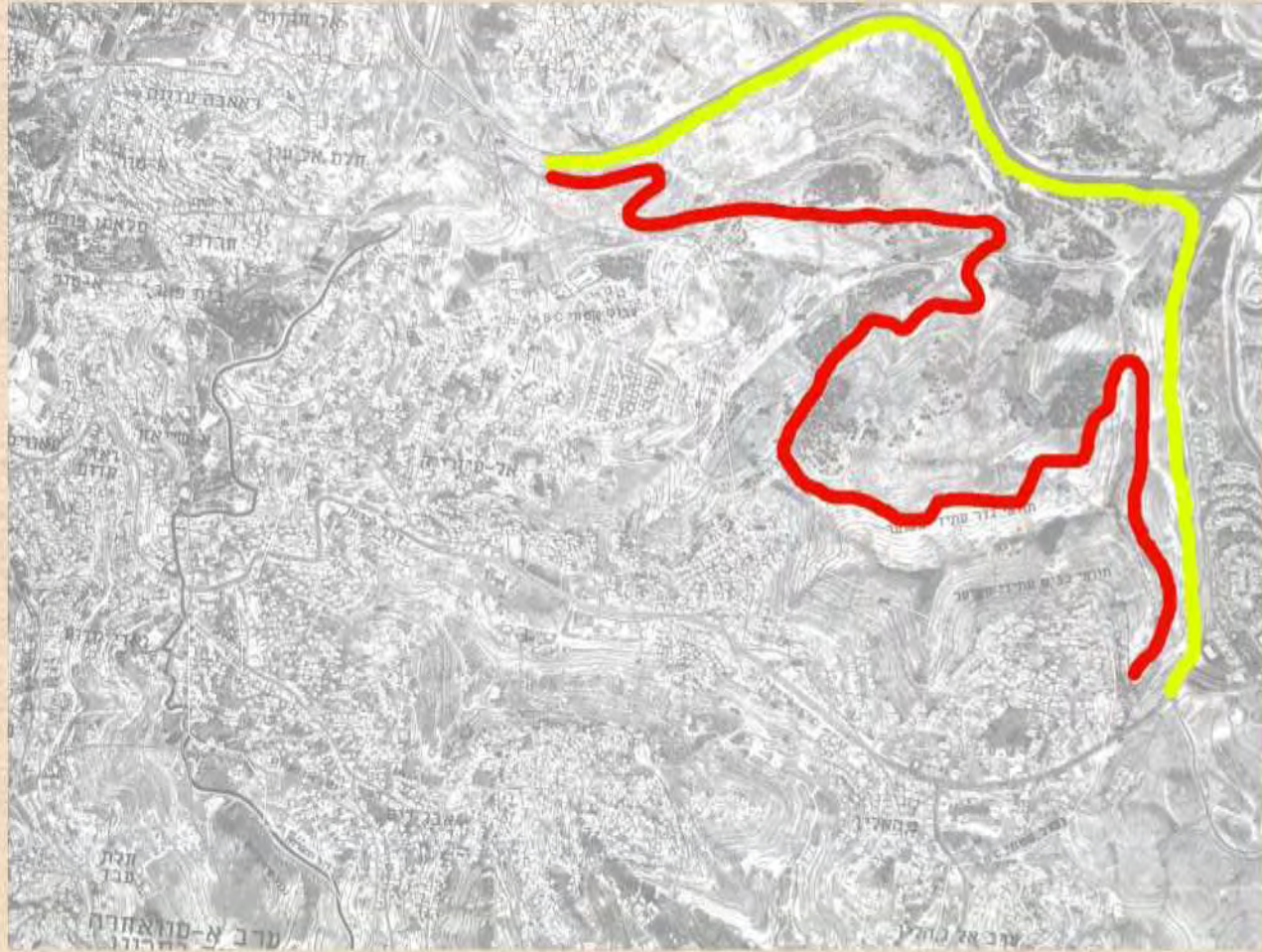




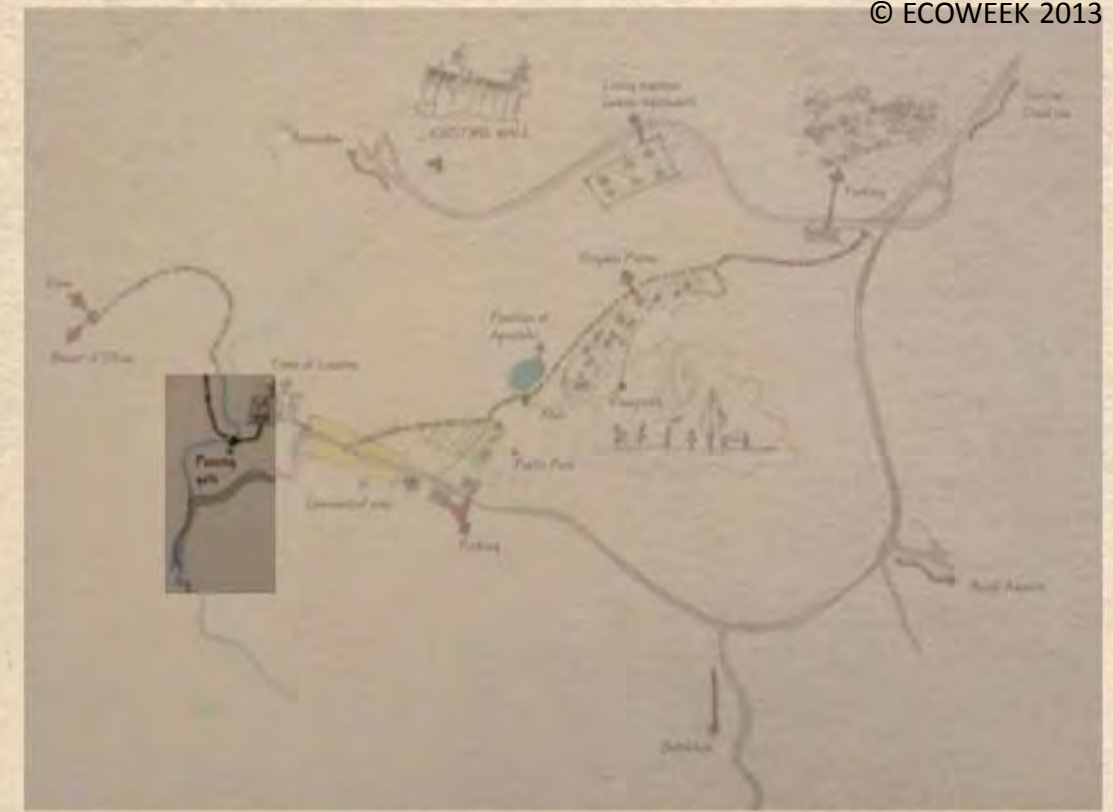
Khan proposal



Separation wall - planned and built



- scheduled position of the wall
- Proposed position of the wall



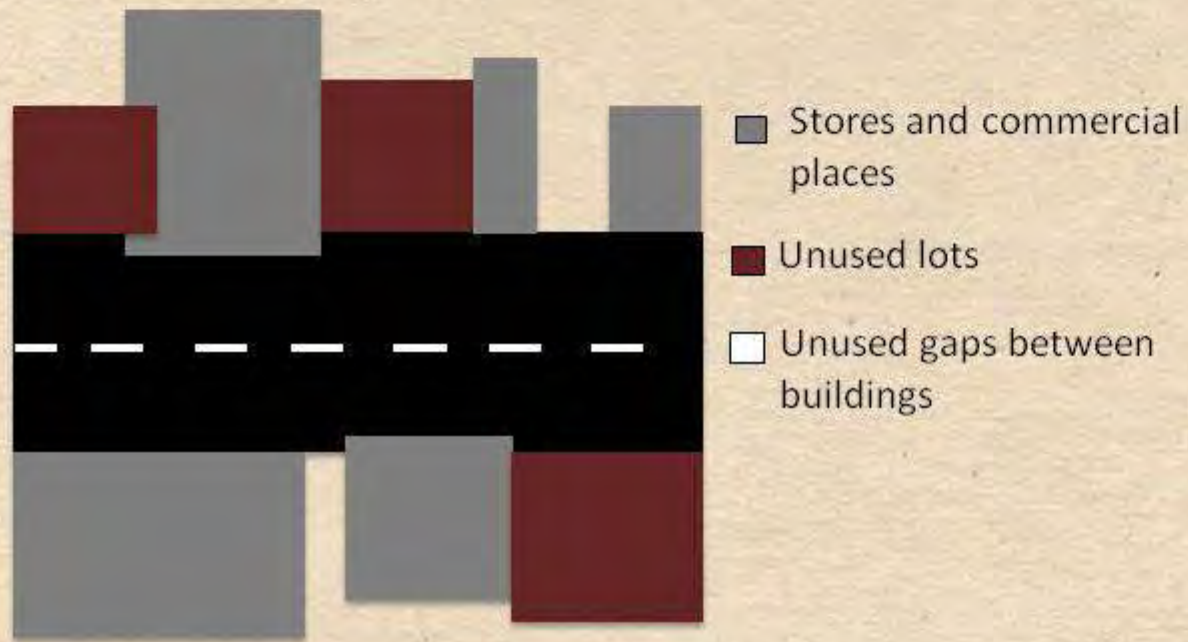
Today crossing to Jerusalem is only through a check point in the end of the village.

Revival the original trail from Jerusalem to Jericho through an already existing gate.



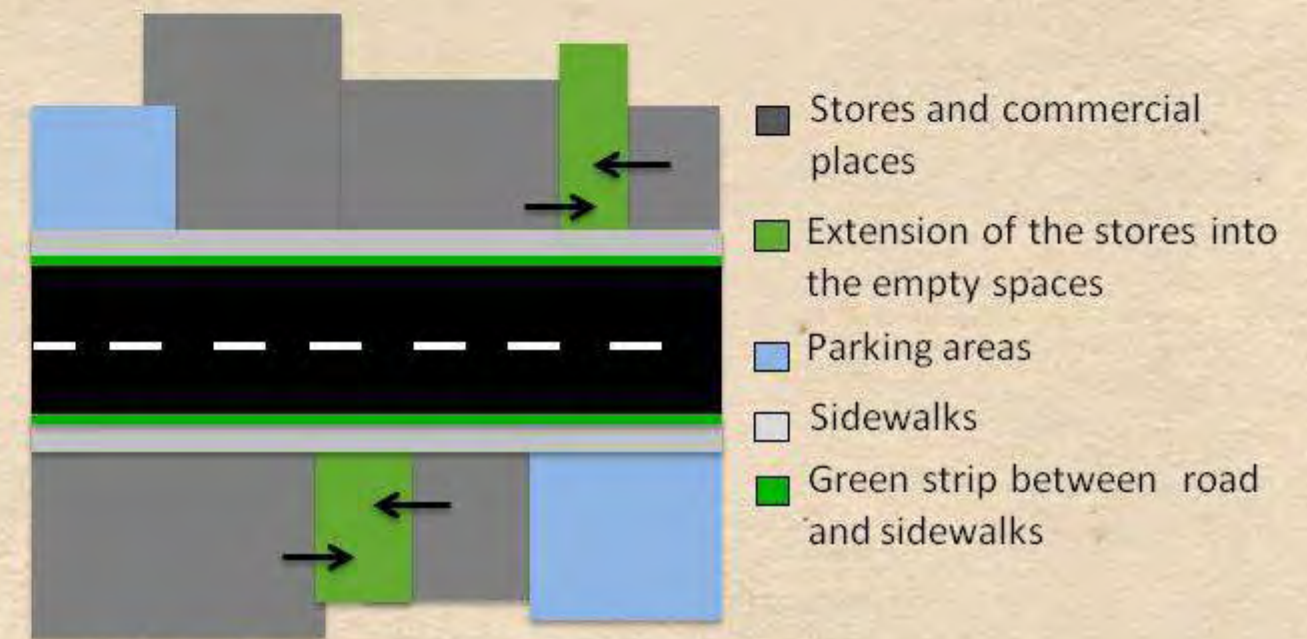
The street today

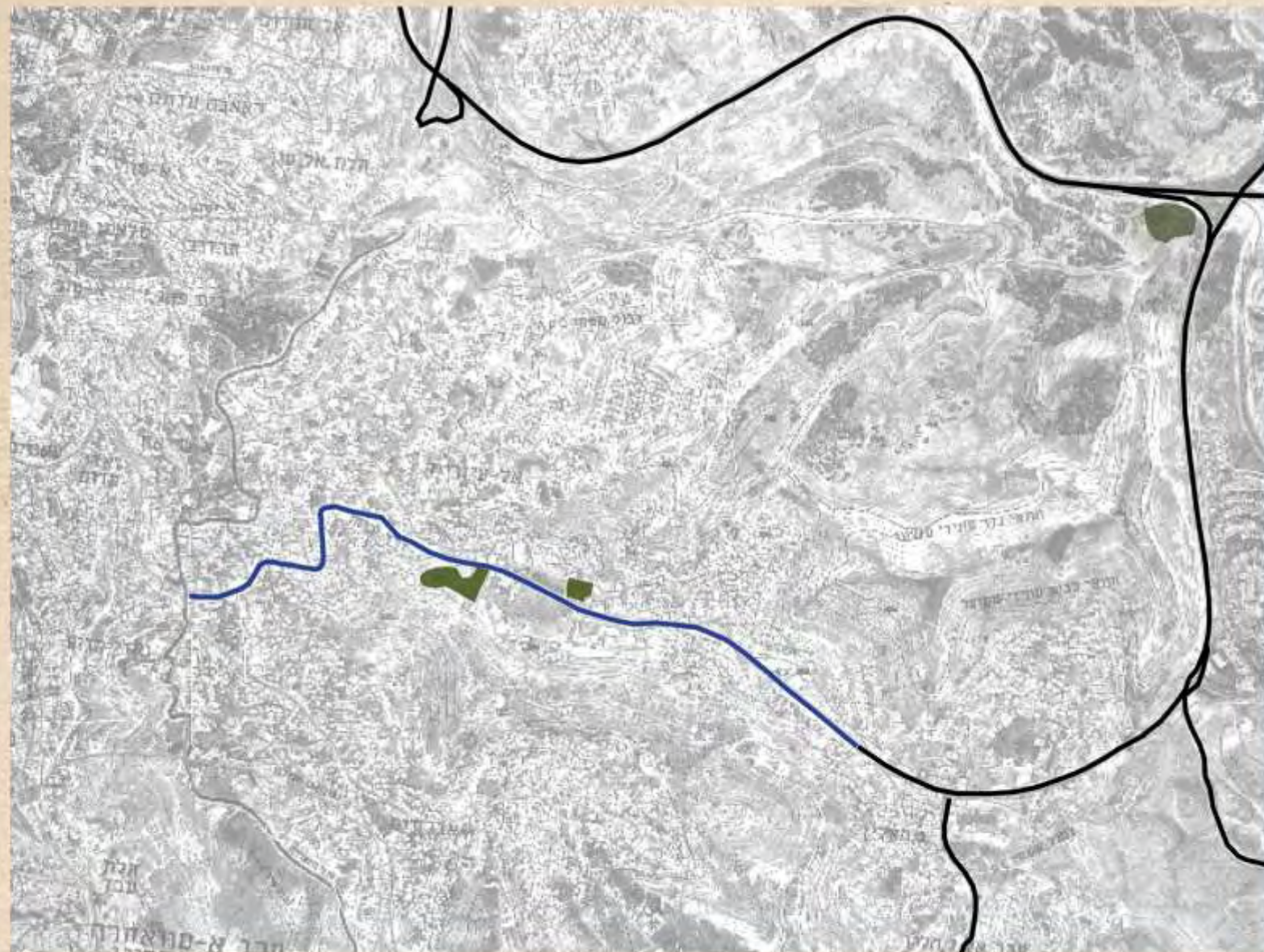
- No sidewalks
- Lack of arranged parking areas
- No benches or any other public facilities
- Merchandise are not displayed on the street



New arrangement

- Add sidewalks
- Empty lots used for parking
- Extend commercial area into gaps between the stores
- Add benches and other public facilities in public space
- Add green strip between main road and sidewalk





The "Lazarus square"

- Move the bus parking to the main street
- Create a public square instead
- Open store for the shoroq center products
- Connect the village center to the square

